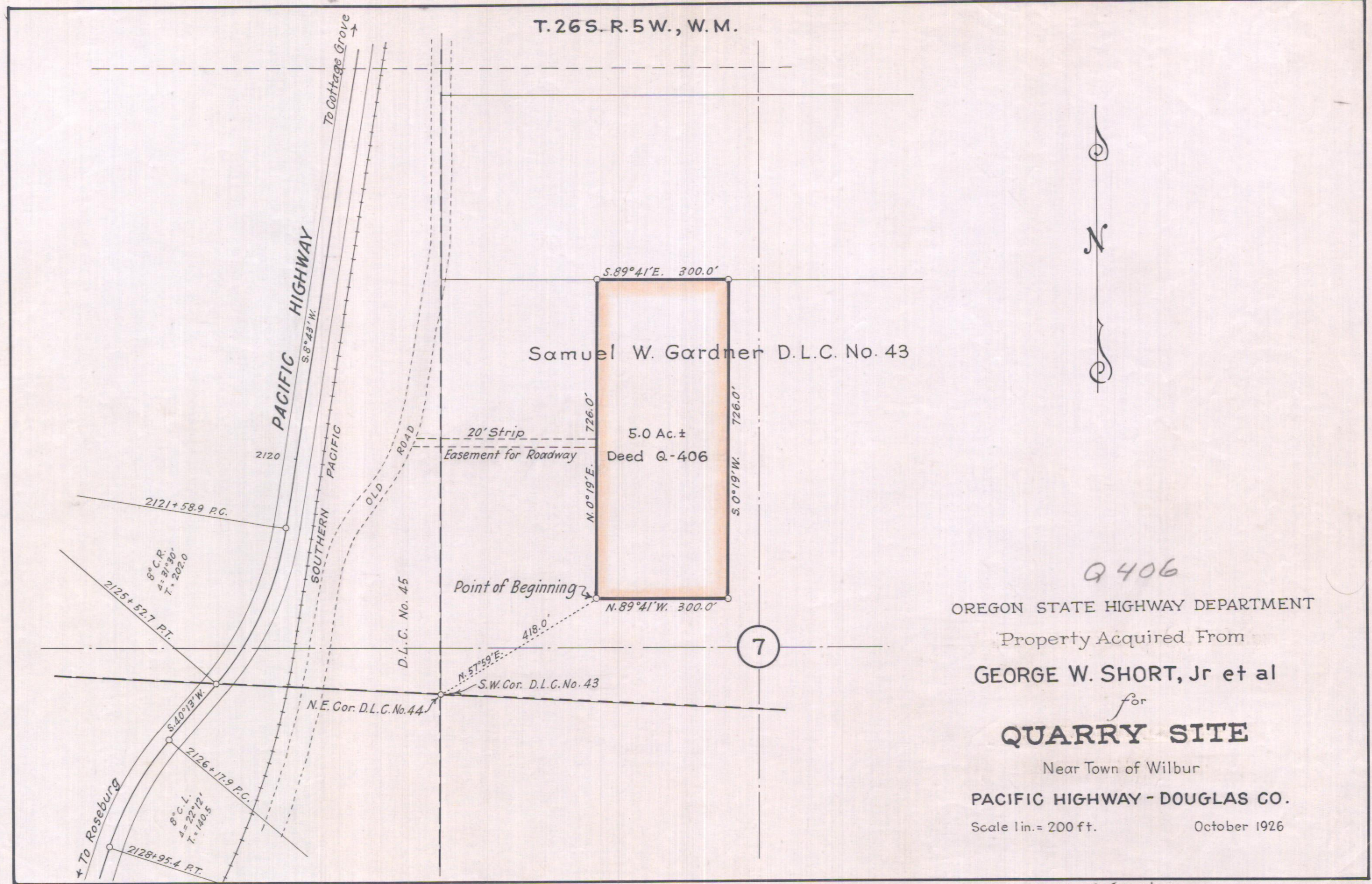


①



Q 406
 OREGON STATE HIGHWAY DEPARTMENT
 Property Acquired From
GEORGE W. SHORT, Jr et al
 for
QUARRY SITE
 Near Town of Wilbur
PACIFIC HIGHWAY - DOUGLAS CO.
 Scale 1 in. = 200 ft. October 1926

3B-11-12 (400')

62-134 ↓