

T30S-R3W.W.M.

True N89°33'E

28 27
33 34

27
34

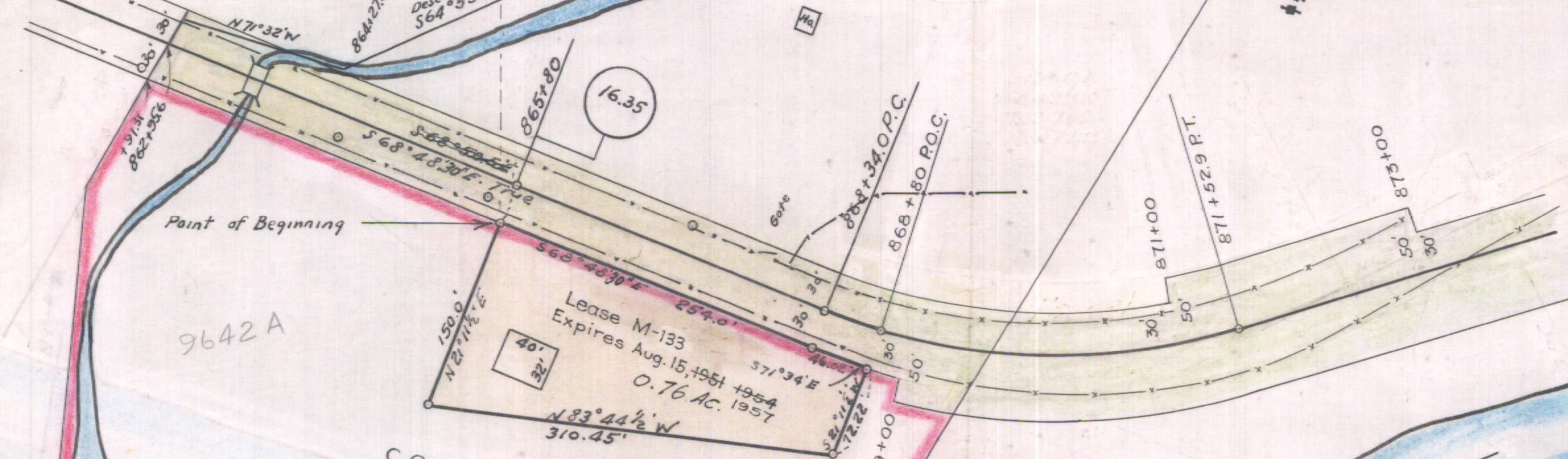
W.T. &
Cora. M. Wright
B. 31 P. 585 D

Cultivated
10 x 7 Conc. Box Culk
24' Length 4' Aprons

Days Creek

Bank of St Johns Creek
Westerly
ST. JOHNS CREEK

Barn



9642A

Lease M-133
Expires Aug. 15, 1951 + 1954
0.76 AC. 1957

C.O. & E.M. Nelson
Lease Agt. M-133
B. 269 P. 314
Expires Aug. 15, 1960

SOUTH

UMPQUA

RIVER

Lease transferred to A.R. Dotson 4-1-44, Exp. 8-15-51

OREGON STATE HIGHWAY DEPARTMENT	
Acquire from	C.O. & E.M. Nelson
For	Maintenance Headquarters Site
Highway	Tiller-Trail
County	Douglas
Scale 1"=100'	Date July 22 1941

Rev. Apr. 1957

5B-33-23

C.R.T.