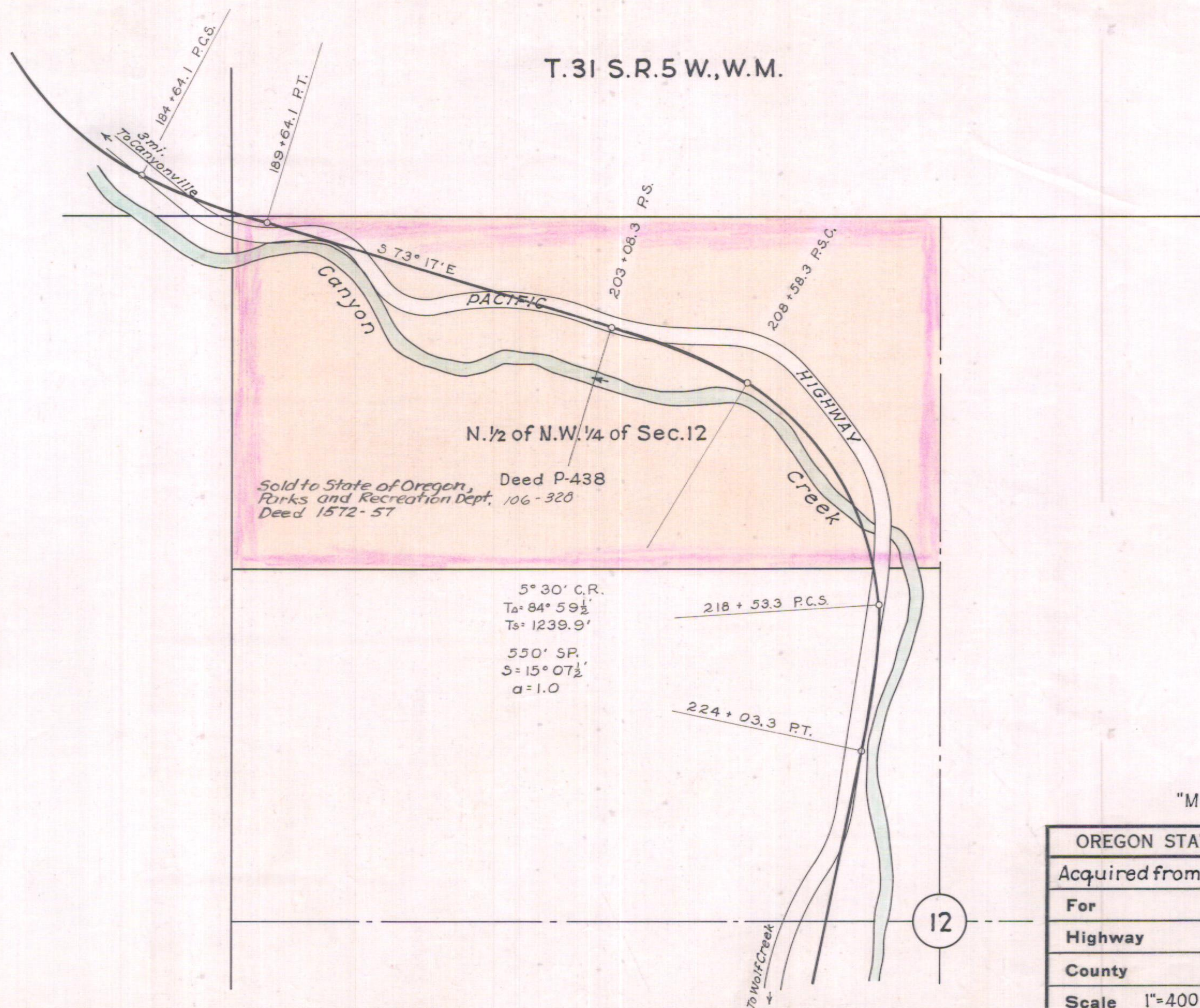


11,172

T.31 S.R.5 W.,W.M.



"Minor Park"

OREGON STATE HIGHWAY DEPARTMENT	
Acquired from	Douglas County
For	Canyon Cr. Timbered Wayside
Highway	Pacific
County	Douglas
Scale	1"=400'
Date	Jan. 1944

68-30-24

Rev. Aug. 1954

2