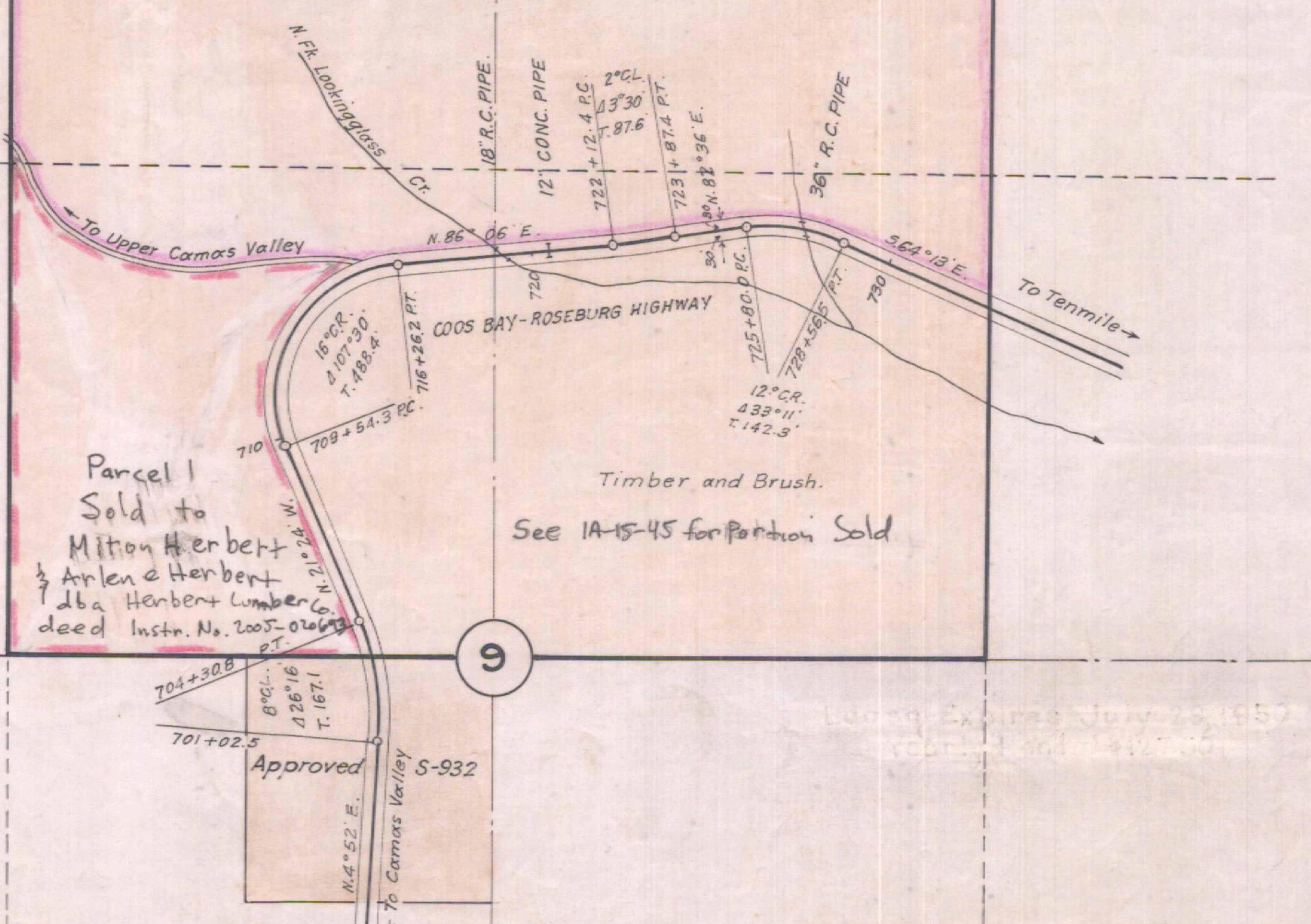


T. 29 S.. R. 8 W. W.M.
E. 1/2 of NW 1/4 & W. 1/2 of NE 1/4 Sec. 9

Sold to M. + A. Herbert
Deed 1254-243
Oil, Gas & Sulphur Lease
Misc. C&A 1699
Deed- p. 192
Redesignated RW 7-9-76
U. S. Government
160 Acres ±



Parcel 1
Sold to
Milton Herbert
1/2 Arlen & Herbert
dba Herbert Lumber Co.
deed Instr. No. 2005-020630

Timber and Brush.
See 1A-15-45 for Partition Sold



Exhibit 20

"Official Wayside"

OREGON STATE HIGHWAY DEPARTMENT
Property Acquired from
U.S. GOVERNMENT

— for —

CAMAS MOUNTAIN WAYSIDE

ON THE
COOS BAY-ROSEBURG HIGHWAY

DOUGLAS COUNTY

Scale 1 in = 400 ft.

Apr. 1928.

3B-12-8(400')
6B-28-20

65