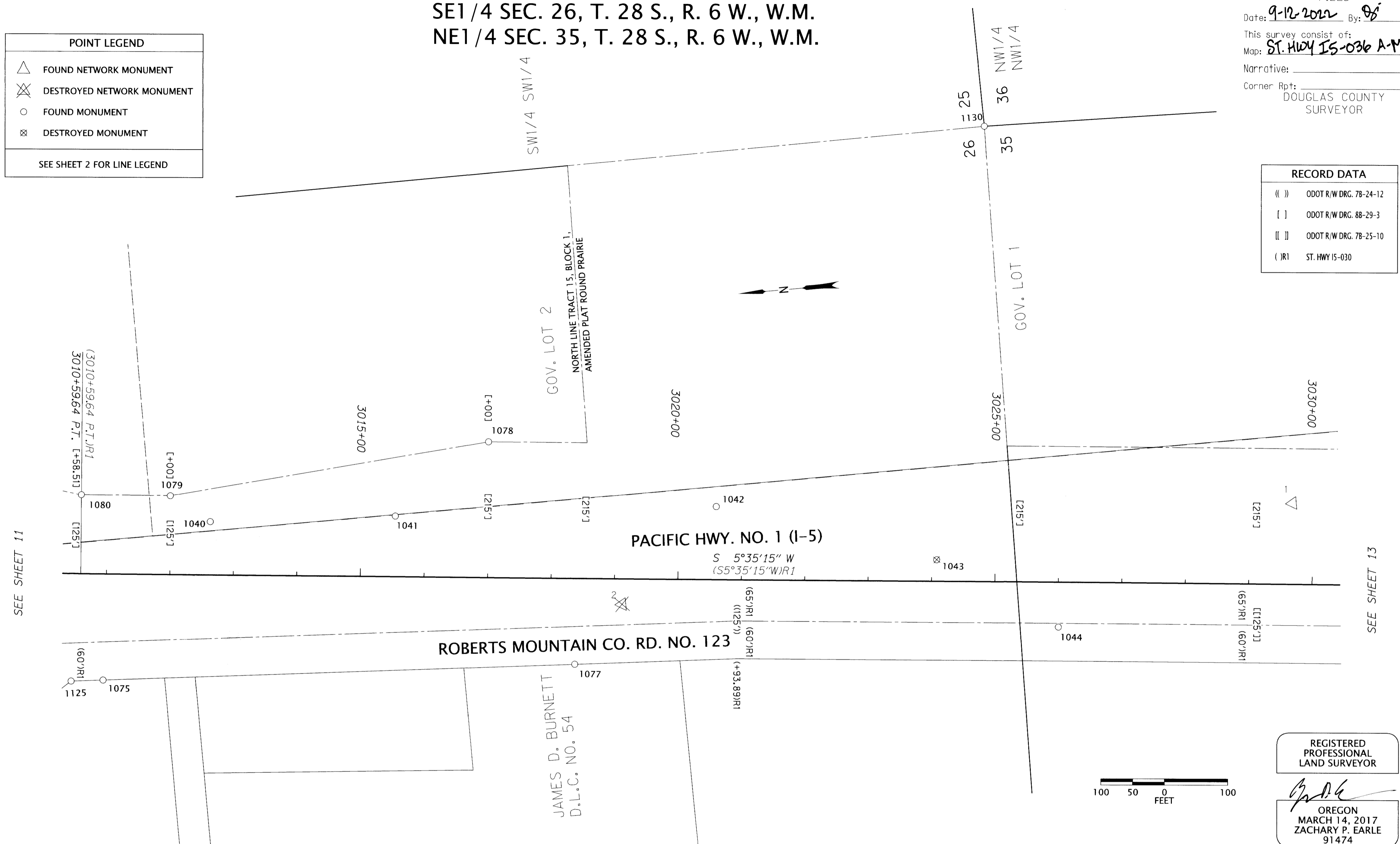


SE1/4 SEC. 26, T. 28 S., R. 6 W., W.M.
NE1/4 SEC. 35, T. 28 S., R. 6 W., W.M.

FILED
Date: 9-12-2022 By: [Signature]
This survey consist of:
Map: ST. HWY 15-036 A-M
Narrative:
Corner Rpt: DOUGLAS COUNTY SURVEYOR

POINT LEGEND	
	FOUND NETWORK MONUMENT
	DESTROYED NETWORK MONUMENT
	FOUND MONUMENT
	DESTROYED MONUMENT
SEE SHEET 2 FOR LINE LEGEND	

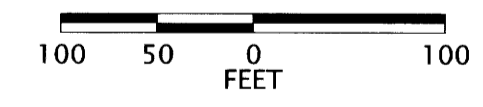
RECORD DATA	
(())	ODOT R/W DRG. 78-24-12
[]	ODOT R/W DRG. 88-29-3
[]	ODOT R/W DRG. 78-25-10
()	ST. HWY 15-030



RECOVERED MONUMENT TABLE

PT. NO.	OCRS NORTHING	OCRS EASTING	STATION	OFFSET (- IS LEFT)	DATE	DESCRIPTION	REFERENCE
1	96034.25	154995.57	3029+68.18	-128.65	7/25/2022	FOUND 5/8" X 30" IRON REBAR WITH A 1-1/2" DIAMETER ALUMINUM CAP STAMPED "ODOT CONTROL 1"	ST HWY. 15-030
2	97101.56	154930.38	3019+12.29	40.15	2/29/2016	SET 5/8" X 30" IRON REBAR WITH A 1-1/2" DIAMETER ALUMINUM CAP STAMPED "ODOT CONTROL 2"	ST HWY. 15-030
1040	97735.54	155117.58	3012+63.09	-84.43	5/17/2016	FD. 5/8" IRON REBAR WITH 1-1/2" ALUMINUM CAP STAMPED "OREG STATE HWY DIV" 0.2' ABOVE SURFACE	88-29-3
1041	97444.60	155100.66	3015+54.30	-95.92	5/17/2016	FD. 5/8" IRON ROD WITH 1-1/2" ALUMINUM CAP STAMPED "OREG STATE HWY DIV" 0.1' BELOW SURFACE	88-29-3
1042	96939.85	155071.10	3020+59.53	-115.65	5/17/2016	FD. 5/8" IRON REBAR WITH 1-1/2" ALUMINUM CAP STAMPED "OREG STATE HWY DIV" 0.3' ABOVE SURFACE	88-29-3
1043	96601.08	154956.16	3024+07.88	-34.24	5/16/2016	FD. 5/8" IRON REBAR WITH 1-1/2" ALUMINUM CAP STAMPED "OREG STATE HWY DIV" FLUSH WITH A/C IN PAVED MEDIAN	88-29-3
1044	96419.66	154832.58	3026+00.47	71.09	5/16/2016	FD. 5/8" IRON REBAR WITH 1-1/2" ALUMINUM CAP STAMPED "OREG STATE HWY DIV" FLUSH WITH SURFACE	88-29-3
1077	97184.29	154842.26	3018+38.53	135.91	5/31/2016	FD. 5/8" SMOOTH IRON ROD 0.3' ABOVE SURFACE, GOOD CONDITION, METAL POST NEARBY WITH NO PADDLE	UNRECORDED
1078	97288.28	155204.80	3016+99.74	-214.78	5/31/2016	FD. 5/8" IRON ROD WITH 1-1/2" ALUMINUM CAP STAMP ILLEGABLE 0.1' BELOW SURFACE, GOOD CONDITION, NO PADDLE	88-29-3
1079	97794.68	155163.87	3011+99.73	-124.74	6/1/2016	FD. 5/8" IRON ROD WITH 1-1/2" ALUMINUM CAP STAMPED "OREG STATE HWY DEPT" 0.1' BELOW SURFACE, GOOD CONDITION, PADDLE-BOARD NEARBY MARKED "SHRW 3012+00 125 LT"	88-29-3
1130	96465.47	155633.41	3024+76.90	-721.47	6/14/2016	FD. 1-1/4" IRON PIPE WITH A 2-1/2" BRASS CAP STAMPED "COUNTY SURVEYORS OFFICE 1961 T28S, R6W S26 S25 S35 S36 1.2' ABOVE SURFACE	PLSS 600200

MONUMENTS 1000 - 1044 & 1087 ARE CONSTRUCTION CENTER LINE REFERENCE POINTS
FD=FOUND SHR=STATE HIGHWAY RIGHT OF WAY



REGISTERED PROFESSIONAL LAND SURVEYOR
[Signature]
OREGON
MARCH 14, 2017
ZACHARY P. EARLE
91474
EXPIRES: 12/31/2023

OREGON DEPARTMENT OF TRANSPORTATION
RIGHT-OF-WAY MONUMENTATION SURVEY
I-5: ROBERTS CREEK RD. - SOUTH UMPQUA RIVER
PACIFIC HWY. NO. 1 (I-5) M.P. 114.8 TO 120.3
DOUGLAS COUNTY

ODOT REGION 3 TECH CENTER
3500 NW STEWART PARKWAY
ROSEBURG, OR 97470 KEY NO. 18967

AUGUST 22, 2022
1" = 100'
SHEET 12 OF 13

ST. HWY. 15-036 L