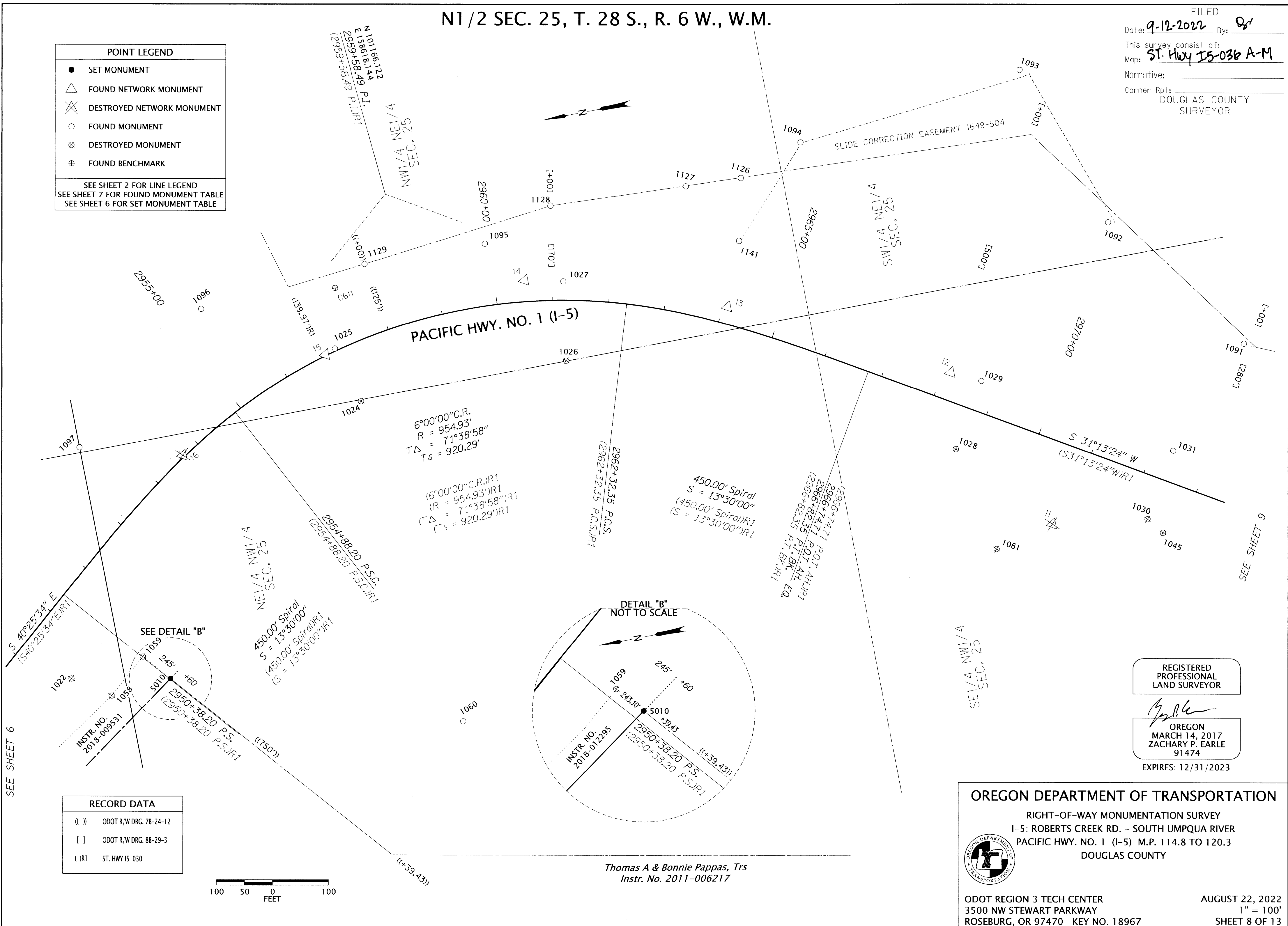


N1/2 SEC. 25, T. 28 S., R. 6 W., W.M.

FILED
 Date: 9-12-2022 By: [Signature]
 This survey consist of:
 Map: ST. Hwy 15-036 A-M
 Narrative:
 Corner Rpt: DOUGLAS COUNTY SURVEYOR

POINT LEGEND	
●	SET MONUMENT
△	FOUND NETWORK MONUMENT
⊗	DESTROYED NETWORK MONUMENT
○	FOUND MONUMENT
⊗	DESTROYED MONUMENT
⊕	FOUND BENCHMARK

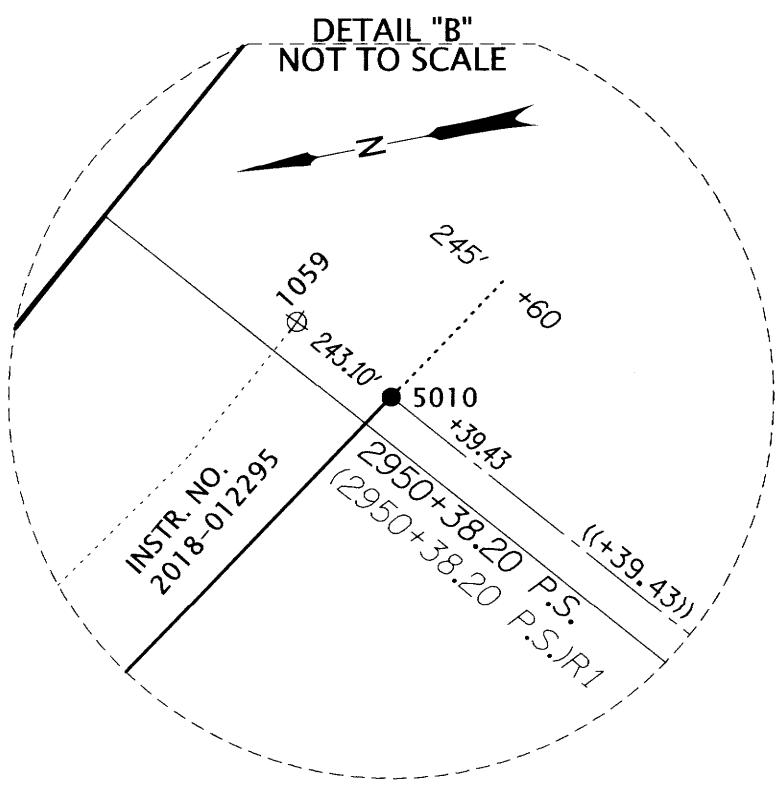
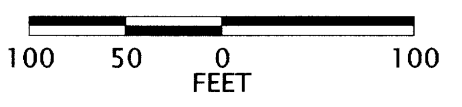
SEE SHEET 2 FOR LINE LEGEND
 SEE SHEET 7 FOR FOUND MONUMENT TABLE
 SEE SHEET 6 FOR SET MONUMENT TABLE



SEE SHEET 6

SEE SHEET 9

RECORD DATA	
(())	ODOT R/W DRG. 78-24-12
[]	ODOT R/W DRG. 88-29-3
()R1	ST. HWY 15-030



Thomas A & Bonnie Pappas, Trs
 Instr. No. 2011-006217

REGISTERED PROFESSIONAL LAND SURVEYOR

[Signature]
 OREGON
 MARCH 14, 2017
 ZACHARY P. EARLE
 91474
 EXPIRES: 12/31/2023

OREGON DEPARTMENT OF TRANSPORTATION
 RIGHT-OF-WAY MONUMENTATION SURVEY
 I-5: ROBERTS CREEK RD. - SOUTH UMPQUA RIVER
 PACIFIC HWY. NO. 1 (I-5) M.P. 114.8 TO 120.3
 DOUGLAS COUNTY



ODOT REGION 3 TECH CENTER
 3500 NW STEWART PARKWAY
 ROSEBURG, OR 97470 KEY NO. 18967

AUGUST 22, 2022
 1" = 100'
 SHEET 8 OF 13

ST. HWY. 15-036 H