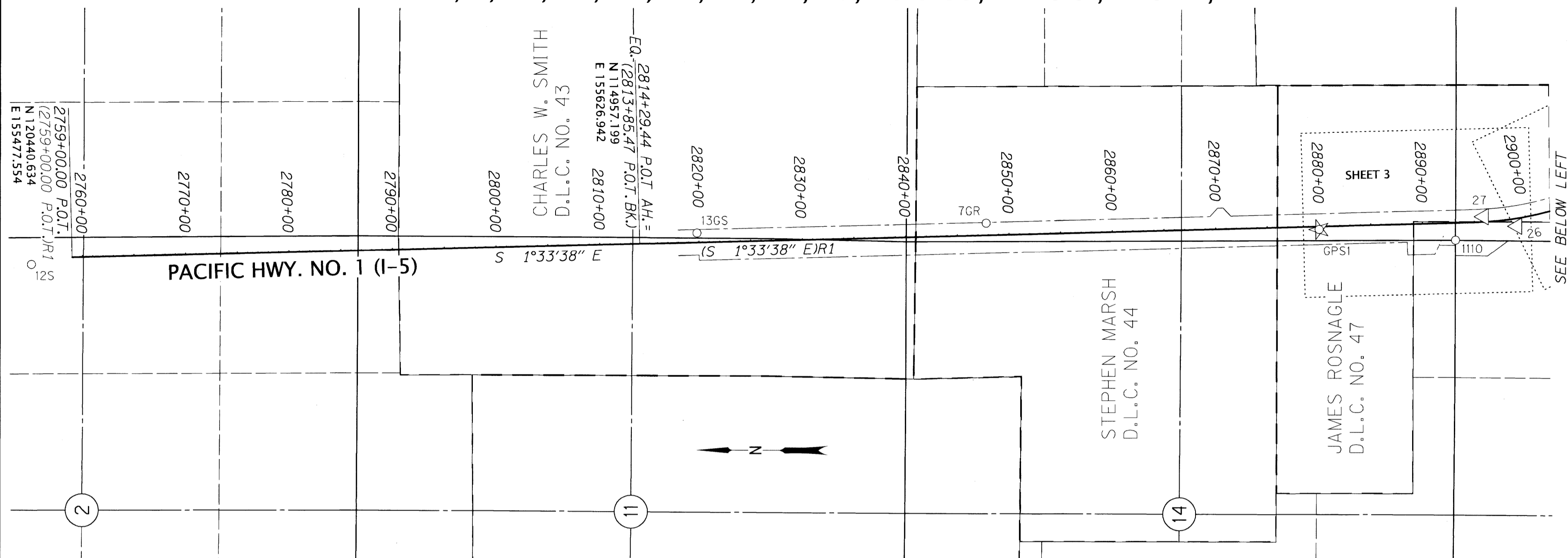
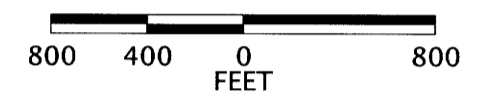


SEC. 1, 2, 11, 12, 13, 14, 23, 24, 25, 26 & 35, T. 28 S., R. 6 W., W.M.

FILED  
 Date: 9-12-2022 By: [Signature]  
 This survey consist of:  
 Map: ST. HWY 15-036 A-M  
 Narrative:  
 Corner Rpt: DOUGLAS COUNTY SURVEYOR



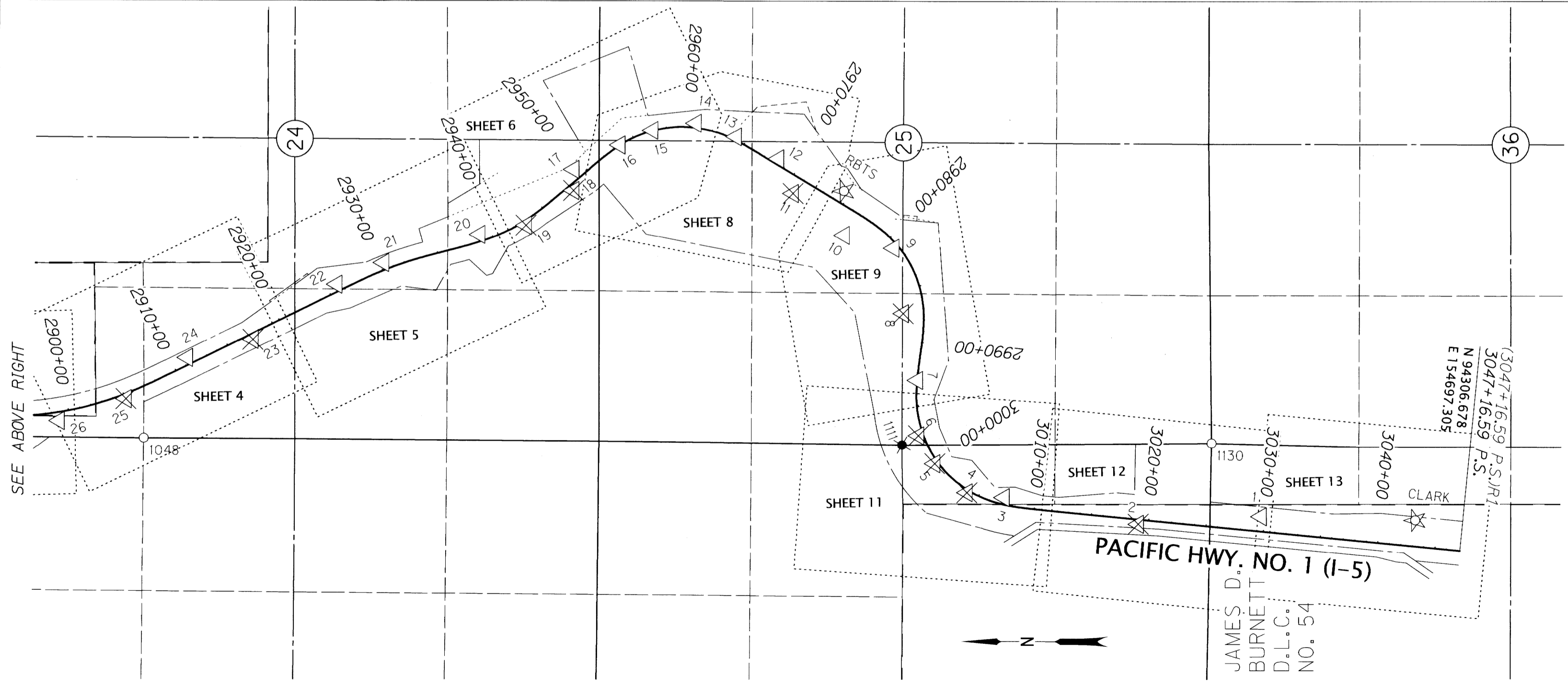
RECORD DATA	
( ) R1	ST HWY. 15-030
( )	ODOT R/W DRG. 78-23-1



POINT LEGEND	
☆	FOUND GPS STATION
△	FOUND NETWORK MONUMENT
⊗	DESTROYED NETWORK MONUMENT
○	FOUND MONUMENT
SEE SHEET 2 FOR LINE LEGEND	

RECOVERED MONUMENT TABLE (FOR POINTS NOT SHOWN ON SURVEY SHEETS 3-13)

PT. NO.	OCRS NORTHING	OCRS EASTING	STATION	OFFSET (- IS LEFT)	DATE	DESCRIPTION	REFERENCE
12S	120832.84	155403.84	-	-	6/3/2016	FD. 5/8" IRON ROD WITH 1-1/2" BRASS CAP STAMPED "ODOT CONTROL 12" FLUSH WITH SURFACE, GOOD CONDITION, CARSONITE POST NEARBY, IN THE AREA BETWEEN THE FREEWAY AND EXIT 120 SOUTHBOUND OFF RAMP, BEHIND THE GUARDRAIL 22' NORTHERLY OF THE SOUTHERLY END OF THE GUARDRAIL ON THE FREEWAY SIDE 4' FROM EDGE OF PAVEMENT	UNRECORDED
13GS	114406.72	155732.16	2819+82.58	-90.19	6/3/2016	FD. 5/8" IRON ROD WITH 1-1/2" BRASS CAP STAMPED "ODOT CONTROL 13" SET IN CONCRETE. FLUSH WITH SURFACE, GOOD CONDITION, CARSONITE POST NEARBY	ST. HWY 15-006
7GR	111609.13	155834.67	2847+81.92	-116.47	6/3/2016	FD. 1/2" SQUARE IRON ROD WITH 1-1/2" ALUMINUM CAP STAMPED "ODOT HORIZ CONTROL 7" 0.1' ABOVE SURFACE, GOOD CONDITION, CARSONITE POST NEARBY MARKED "GARDEN VALLEY- ROBERTS CREEK, POINT 7"	ST. HWY 15-006



**SHEET INDEX:**  
 1 SHEET LAYOUT  
 2 CONTROL NARRATIVE, NETWORK DIAGRAM  
 3-13 SURVEY SHEETS AND MONUMENT TABLES

REGISTERED PROFESSIONAL LAND SURVEYOR

[Signature]  
 OREGON  
 MARCH 14, 2017  
 ZACHARY P. EARLE  
 91474  
 EXPIRES: 12/31/2023

**OREGON DEPARTMENT OF TRANSPORTATION**  
 RIGHT-OF-WAY MONUMENTATION SURVEY  
 I-5: ROBERTS CREEK RD. - SOUTH UMPQUA RIVER  
 PACIFIC HWY. NO. 1 (I-5) M.P. 114.8 TO 120.3  
 DOUGLAS COUNTY

ODOT REGION 3 TECH CENTER  
 3500 NW STEWART PARKWAY  
 ROSEBURG, OR 97470 KEY NO. 18967

AUGUST 22, 2022  
 1" = 800'  
 SHEET 1 OF 13

ST. HWY. 15-036 A