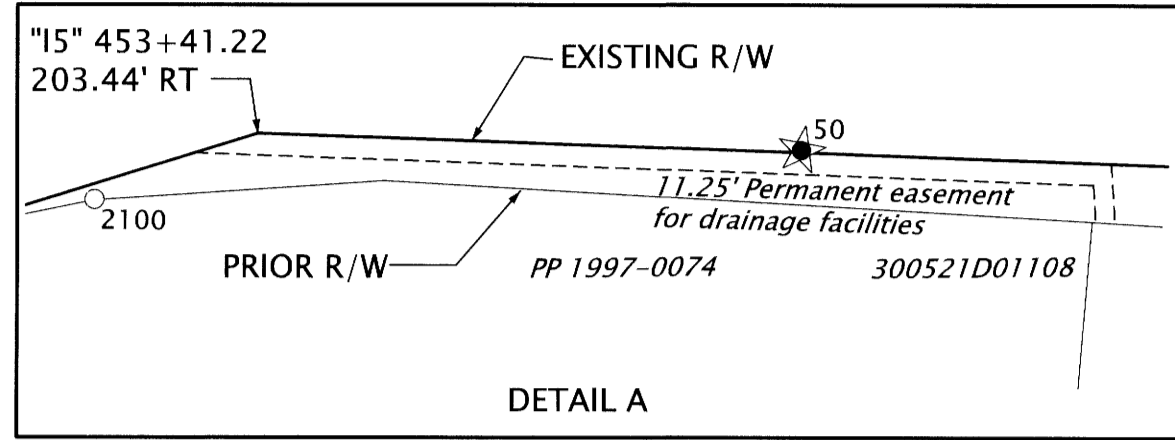
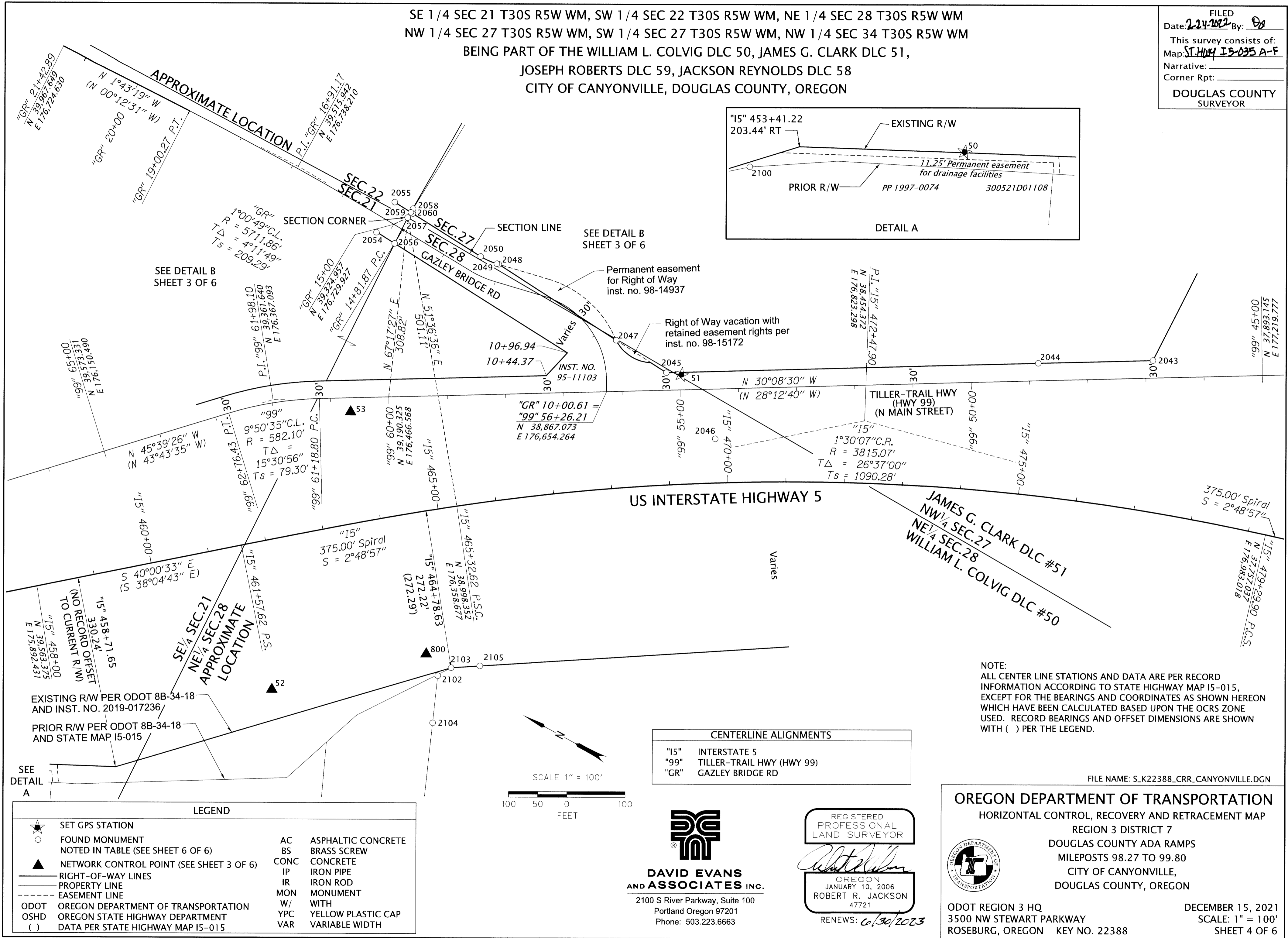


SE 1/4 SEC 21 T30S R5W WM, SW 1/4 SEC 22 T30S R5W WM, NE 1/4 SEC 28 T30S R5W WM
 NW 1/4 SEC 27 T30S R5W WM, SW 1/4 SEC 27 T30S R5W WM, NW 1/4 SEC 34 T30S R5W WM
 BEING PART OF THE WILLIAM L. COLVIG DLC 50, JAMES G. CLARK DLC 51,
 JOSEPH ROBERTS DLC 59, JACKSON REYNOLDS DLC 58
 CITY OF CANYONVILLE, DOUGLAS COUNTY, OREGON

FILED
 Date: 2-24-2022 By: [Signature]
 This survey consists of:
 Map: ST HWY 15-035 A-F
 Narrative:
 Corner Rpt:
 DOUGLAS COUNTY
 SURVEYOR



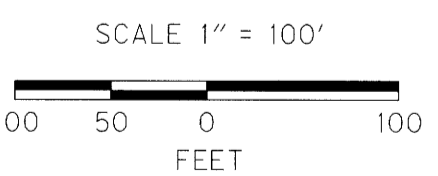
SEE DETAIL B
 SHEET 3 OF 6

SEE DETAIL B
 SHEET 3 OF 6

SEE
 DETAIL
 A

NOTE:
 ALL CENTER LINE STATIONS AND DATA ARE PER RECORD
 INFORMATION ACCORDING TO STATE HIGHWAY MAP 15-015,
 EXCEPT FOR THE BEARINGS AND COORDINATES AS SHOWN HEREON
 WHICH HAVE BEEN CALCULATED BASED UPON THE OCRS ZONE
 USED. RECORD BEARINGS AND OFFSET DIMENSIONS ARE SHOWN
 WITH () PER THE LEGEND.

CENTERLINE ALIGNMENTS	
"15"	INTERSTATE 5
"99"	TILLER-TRAIL HWY (HWY 99)
"GR"	GAZLEY BRIDGE RD



LEGEND			
	SET GPS STATION	AC	ASPHALTIC CONCRETE
	FOUND MONUMENT NOTED IN TABLE (SEE SHEET 6 OF 6)	BS	BRASS SCREW
	NETWORK CONTROL POINT (SEE SHEET 3 OF 6)	CONC	CONCRETE
	RIGHT-OF-WAY LINES	IP	IRON PIPE
	PROPERTY LINE	IR	IRON ROD
	EASEMENT LINE	MON	MONUMENT
	ODOT OREGON DEPARTMENT OF TRANSPORTATION	W/	WITH
	OSHD OREGON STATE HIGHWAY DEPARTMENT	YPC	YELLOW PLASTIC CAP
	() DATA PER STATE HIGHWAY MAP 15-015	VAR	VARIABLE WIDTH

**DAVID EVANS
 AND ASSOCIATES INC.**
 2100 S River Parkway, Suite 100
 Portland Oregon 97201
 Phone: 503.223.6663

REGISTERED
 PROFESSIONAL
 LAND SURVEYOR
 [Signature]
 OREGON
 JANUARY 10, 2006
 ROBERT R. JACKSON
 47721
 RENEWS: 6/30/2023

FILE NAME: S_K22388_CRR_CANYONVILLE.DGN

OREGON DEPARTMENT OF TRANSPORTATION
 HORIZONTAL CONTROL, RECOVERY AND RETRACEMENT MAP
 REGION 3 DISTRICT 7
 DOUGLAS COUNTY ADA RAMP
 MILEPOSTS 98.27 TO 99.80
 CITY OF CANYONVILLE,
 DOUGLAS COUNTY, OREGON

ODOT REGION 3 HQ
 3500 NW STEWART PARKWAY
 ROSEBURG, OREGON KEY NO. 22388

DECEMBER 15, 2021
 SCALE: 1" = 100'
 SHEET 4 OF 6