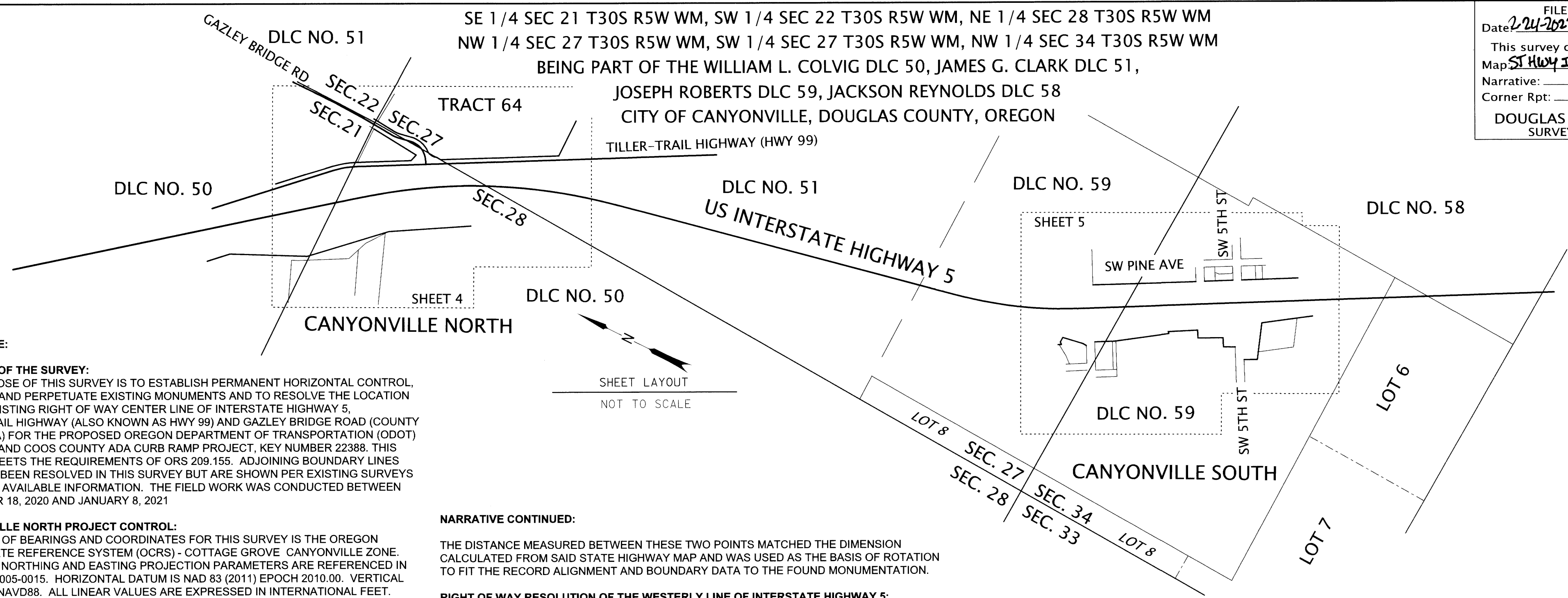


FILED  
Date: 2/24/2022 By: [Signature]  
This survey consists of:  
Map: ST HWY 15-035 A-F  
Narrative:  
Corner Rpt:  
DOUGLAS COUNTY SURVEYOR



**NARRATIVE:**  
**PURPOSE OF THE SURVEY:**  
THE PURPOSE OF THIS SURVEY IS TO ESTABLISH PERMANENT HORIZONTAL CONTROL, RECOVER AND PERPETUATE EXISTING MONUMENTS AND TO RESOLVE THE LOCATION OF THE EXISTING RIGHT OF WAY CENTER LINE OF INTERSTATE HIGHWAY 5, TILLER-TRAIL HIGHWAY (ALSO KNOWN AS HWY 99) AND GAZLEY BRIDGE ROAD (COUNTY ROAD #35A) FOR THE PROPOSED OREGON DEPARTMENT OF TRANSPORTATION (ODOT) DOUGLAS AND COOS COUNTY ADA CURB RAMP PROJECT, KEY NUMBER 22388. THIS SURVEY MEETS THE REQUIREMENTS OF ORS 209.155. ADJOINING BOUNDARY LINES HAVE NOT BEEN RESOLVED IN THIS SURVEY BUT ARE SHOWN PER EXISTING SURVEYS OR OTHER AVAILABLE INFORMATION. THE FIELD WORK WAS CONDUCTED BETWEEN DECEMBER 18, 2020 AND JANUARY 8, 2021

**CANYONVILLE NORTH PROJECT CONTROL:**  
THE BASIS OF BEARINGS AND COORDINATES FOR THIS SURVEY IS THE OREGON COORDINATE REFERENCE SYSTEM (OCRS) - COTTAGE GROVE CANYONVILLE ZONE. THE OCRS NORTHING AND EASTING PROJECTION PARAMETERS ARE REFERENCED IN O.A.R. 734-005-0015. HORIZONTAL DATUM IS NAD 83 (2011) EPOCH 2010.00. VERTICAL DATUM IS NAVD88. ALL LINEAR VALUES ARE EXPRESSED IN INTERNATIONAL FEET.

PRIMARY CONTROL CONSISTS OF TWO PRIMARY PROJECT CONTROL STATIONS AND THREE SECONDARY CONTROL STATIONS. TWO-HOUR STATIC SESSIONS WERE OBSERVED AT PROJECT CONTROL STATIONS 50 AND 51. ALL PROJECT CONTROL STATION POSITIONS WERE ESTABLISHED USING A COMBINATION OF GLOBAL NAVIGATION SATELLITE SYSTEM (GNSS) OBSERVATIONS, TERRESTRIAL TOTAL STATION MEASUREMENTS, AND DIGITAL LEVEL OBSERVATIONS.

GNSS BASELINE VECTORS, TOGETHER WITH TERRESTRIAL OBSERVATIONS, WERE ADJUSTED USING LEAST SQUARES ANALYSIS (STARNET V9.0). THE NETWORK WAS CONSTRAINED BY HOLDING THE PUBLISHED OREGON REAL-TIME GNSS NETWORK (ORGN) LATITUDE AND LONGITUDE OF THREE CONTINUOUSLY OPERATING REFERENCE STATIONS (CORS): RDL2, RSBG, AND PSPT. THE RESULTING ERROR SEMI-MAJOR AXIS LENGTHS, AT THE 95% CONFIDENCE LEVEL FOR PRIMARY AND SECONDARY CONTROL POINTS, WERE UNDER 0.03 FEET IN ABSOLUTE ACCURACY. FINAL PROJECT COORDINATES WERE ESTABLISHED BY PROJECTING THE ADJUSTED NETWORK POSITIONS TO THE OCRS - COTTAGE GROVE CANYONVILLE ZONE, REPRESENTING APPROXIMATE GROUND DISTANCES. ALL OBSERVATIONS WERE MADE IN DECEMBER 2020, UTILIZING LEICA TS15 TOTAL STATION AND LEICA GS14 GNSS RECEIVERS WITH CS15 DATA COLLECTOR.

NETWORK POINTS SET DURING THIS SURVEY DO NOT REPRESENT PROPERTY LINES OR RIGHT OF WAY LINES. THEY ARE INTENDED TO PERPETUATE THE ALIGNMENTS AND RIGHT OF WAY DEVELOPED FOR THIS PROJECT IN CONFORMANCE WITH ORS CHAPTER 209 SECTION 155.

**MONUMENTS:**  
HORIZONTAL POSITIONS OF THE FOUND MONUMENTS WERE OBTAINED USING TWO METHODS: REAL-TIME KINEMATIC (RTK) GPS MEASUREMENTS AND TERRESTRIAL OBSERVATIONS FROM HORIZONTAL CONTROL WHERE RTK WAS NOT FEASIBLE. MONUMENTS WERE OBSERVED TWICE, WITH A MINIMUM OF FORTY-FIVE MINUTES BETWEEN RTK OBSERVATIONS, AND THEN MEANING THE VALUES. TERRESTRIAL OBSERVATION METHODS FOLLOWED ODOT PROCEDURES WITH TWO OBSERVATIONS.

**CENTER LINE RESOLUTION OF INTERSTATE HIGHWAY 5, TILLER-TRAIL HIGHWAY (ALSO KNOWN AS HWY 99) AND GAZLEY BRIDGE ROAD (COUNTY ROAD #35A):**  
A BEST FIT RESOLUTION WAS UTILIZED IN ORDER TO MAINTAIN THE GEOMETRIC RELATIONSHIP AND STATIONING OF THE CENTER LINE ALIGNMENTS AS SHOWN FOR INTERSTATE HIGHWAY 5 ("I-5" LINE), TILLER-TRAIL HIGHWAY ("99" LINE) AND GAZLEY BRIDGE ROAD ("GR" LINE) ACCORDING TO RECORD COORDINATE CONTROL, STATIONING AND CURVE DATA PER STATE HIGHWAY MAP 15-015, "HORIZONTAL CONTROL, RECOVERY AND RETRACEMENT MAP", DATED FEBRUARY 2004.

THE CENTER LINE ALIGNMENTS AND ADJACENT RIGHT OF WAY LINES AS SHOWN ON SAID STATE HIGHWAY MAP WERE CALCULATED AND ROTATED TO MATCH THE BEARING AS ESTABLISHED BETWEEN POINT 2046, A 5/8" IRON ROD WITH 1-1/2" ALUMINUM CAP MARKED "ODOT CONTROL 24", FOUND AT "I-5" STATION 469+80.66, 75.38 FT LT., AND POINT 2057, A 2-1/2" BRASS CAP MARKED "T30S R5W SEC. COR. RESET 1995", BEING THE SECTION CORNER COMMON TO SECTIONS 21, 22, 27 AND 28, FOUND AT "GR" STATION 14+85.51, 22.14 FT RT.

**NARRATIVE CONTINUED:**  
THE DISTANCE MEASURED BETWEEN THESE TWO POINTS MATCHED THE DIMENSION CALCULATED FROM SAID STATE HIGHWAY MAP AND WAS USED AS THE BASIS OF ROTATION TO FIT THE RECORD ALIGNMENT AND BOUNDARY DATA TO THE FOUND MONUMENTATION.

**RIGHT OF WAY RESOLUTION OF THE WESTERLY LINE OF INTERSTATE HIGHWAY 5:**  
DETERMINED PER DEED TO THE UMPQUA INDIAN DEVELOPMENT CORPORATION ACCORDING TO INSTRUMENT NO. 2019-017236, AND AS DEPICTED ON SURVEY M171-71. THE BOUNDARY LINES PER SAID DOCUMENTS WERE CALCULATED AND ROTATED TO MATCH THE BEARING AS ESTABLISHED BETWEEN POINT 2100, A 5/8" IRON ROD WITH YELLOW PLASTIC CAP MARKED "WYTCHERLEY LS 2724", FOUND AT "I-5" STATION 452+50.76, 220.74 FT RIGHT, AND POINT 2103, A 5/8" IRON ROD FOUND AT "I-5" STATION 464+78.63, 272.22 FT RIGHT. THESE TWO MONUMENTS FIT THE DATA ACCORDING TO SAID SURVEY M171-71 AND ARE ALSO SHOWN ON STATE HIGHWAY MAP 15-015 AND PARTITION PLAT 1997-0058.

**RIGHT OF WAY RESOLUTION OF THE EASTERLY LINE OF TILLER TRAIL HIGHWAY:**  
THE RIGHT OF WAY LINE AS SHOWN HEREON IS PER RECORD INFORMATION ACCORDING TO STATE HIGHWAY MAP 15-015. THE RIGHT OF WAY MONUMENTS WE LOCATED ALONG THIS LINE, POINTS 2043, 2044, 2045, 2052 AND 2053, WERE FOUND TO BE WITHIN AN AVERAGE DISTANCE OF 0.05 FT FROM THE ODOT RECORD POSITIONS ACCORDING TO SAID STATE HIGHWAY MAP, AND WERE THEREFORE ACCEPTED. THE POSITION OF THE EASTERLY LINE OF TILLER TRAIL HIGHWAY, RELATIVE TO ITS CENTER LINE ALIGNMENT, IS AS SPECIFIED ON SAID HIGHWAY MAP.

**RIGHT OF WAY RESOLUTION OF THE EASTERLY LINE OF GAZLEY BRIDGE ROAD:**  
DUE TO CONFLICTING LINE WORK AS SHOWN BETWEEN DOUGLAS COUNTY ROAD MAP #35A, THE BLM SURVEY OF TRACT 64 AND STATE HIGHWAY MAP 15-015, ADDITIONAL RESEARCH WAS REQUIRED IN ORDER TO DETERMINE AND RESOLVE THE CURRENT RIGHT OF WAY LINE. A GRANT OF EASEMENT FOR RIGHT OF WAY ACCORDING TO INSTRUMENT NO. 98-14937 AND A BOARD OF COUNTY COMMISSIONERS VACATION ORDER ACCORDING TO INSTRUMENT NO. 98-15172 WERE REVIEWED AND BOTH WERE FOUND TO BE CONSISTENT WITH THE BLM SURVEY. THE RIGHT OF WAY MONUMENTS WE LOCATED ALONG THIS LINE, POINTS 2045, 2047-2050, 2055, 2059 AND 2060, WERE FOUND TO BE WITHIN AN AVERAGE DISTANCE OF 0.03 FT FROM THE ODOT RECORD POSITIONS ACCORDING TO THE STATE HIGHWAY MAP AND WERE THEREFORE ACCEPTED. THE MONUMENTS WE FOUND ARE THE SAME MONUMENTS THAT WERE EITHER SET OR FOUND IN ALL THREE OF THE PREVIOUSLY MENTIONED SURVEYS. HAVING ACCEPTED THESE RIGHT OF WAY MONUMENT POSITIONS, WE DETERMINED THE RIGHT OF WAY LINE ACCORDING TO THE BOUNDARY DATA AS SHOWN ON SAID BLM SURVEY.

**SHEET INDEX:**  
SHEET 1: SHEET LAYOUT, NARRATIVE AND REFERENCES (NORTH PROJECT)  
SHEET 2: SHEET LAYOUT, NARRATIVE AND REFERENCES (SOUTH PROJECT)  
SHEET 3: GPS NETWORK, CONTROL MONUMENT LIST  
SHEET 4: PROJECT RECOVERY AND LEGEND (NORTH PROJECT)  
SHEET 5: PROJECT RECOVERY AND LEGEND (SOUTH PROJECT)  
SHEET 6: MONUMENT TABLE AND LEGEND (NORTH AND SOUTH PROJECTS)

**NARRATIVE CONTINUED:**  
**RIGHT OF WAY RESOLUTION OF THE WESTERLY LINE OF GAZLEY BRIDGE ROAD:**  
DETERMINED ACCORDING TO STATE HIGHWAY MAP 15-015, DOUGLAS COUNTY ROAD MAP #35A AND A DEED TO DOUGLAS COUNTY FOR ADDITIONAL RIGHT OF WAY ACCORDING TO INSTRUMENT NO. 95-11103. WE HELD A LINE FROM POINT 2056, SAID LINE BEING PARALLEL WITH AND 60 FT WESTERLY OF THAT PORTION OF THE EASTERLY RIGHT OF WAY LINE OF GAZLEY BRIDGE ROAD SITUATED BETWEEN POINT 2060 AND POINT 2050, PER SAID COUNTY ROAD MAP, TO AN ANGLE POINT IN SAID PARALLEL LINE FROM POINT 2056, BEING A TRANSITION IN THE WESTERLY RIGHT OF WAY LINE OF GAZLEY BRIDGE ROAD PER SAID INSTRUMENT NO. 95-11103, TO THE EASTERLY RIGHT OF WAY LINE OF TILLER-TRAIL HIGHWAY.

**CANYONVILLE NORTH REFERENCES:**  
ODOT RIGHT OF WAY MAPS  
3B-11-8  
6B-34-18  
8B-16-18  
9B-4-27  
10B-20-5  
DOUGLAS COUNTY STATE HIGHWAY MAPS  
ST. HWY. 15-015  
DOUGLAS COUNTY ROAD MAPS  
CO. RD. #35A

**REFERENCES CONTINUED:**  
DOUGLAS COUNTY SURVEYS  
M145-3 (BLM SURVEY OF TRACT 64)  
M98-36  
DOUGLAS COUNTY PARTITION PLATS  
PP 1997-0074  
DOUGLAS COUNTY DOCUMENTS  
89-18282 2013-004708  
95-11103 2016-000096  
98-14937 2019-017234  
98-15172 2019-017235  
2019-017236

FILE NAME: S\_K22388\_CRR\_CANYONVILLE.DGN

**DAVID EVANS AND ASSOCIATES INC.**  
2100 S River Parkway, Suite 100  
Portland Oregon 97201  
Phone: 503.223.6663

REGISTERED PROFESSIONAL LAND SURVEYOR  
[Signature]  
OREGON  
JANUARY 10, 2006  
ROBERT R. JACKSON  
47721  
RENEWS: 6/30/2023

**OREGON DEPARTMENT OF TRANSPORTATION**  
HORIZONTAL CONTROL, RECOVERY AND RETRACEMENT MAP  
REGION 3 DISTRICT 7  
DOUGLAS COUNTY ADA RAMP  
MILEPOSTS 98.27 TO 99.80  
CITY OF CANYONVILLE,  
DOUGLAS COUNTY, OREGON

ODOT REGION 3 HQ  
3500 NW STEWART PARKWAY  
ROSEBURG, OREGON KEY NO. 22388

DECEMBER 15, 2021  
SCALE: N/A  
SHEET 1 OF 6

ST. HWY. 15-035 A

SE 1/4 SEC 21 T30S R5W WM, SW 1/4 SEC 22 T30S R5W WM, NE 1/4 SEC 28 T30S R5W WM  
 NW 1/4 SEC 27 T30S R5W WM, SW 1/4 SEC 27 T30S R5W WM, NW 1/4 SEC 34 T30S R5W WM  
 BEING PART OF THE WILLIAM L. COLVIG DLC 50, JAMES G. CLARK DLC 51,  
 JOSEPH ROBERTS DLC 59, JACKSON REYNOLDS DLC 58  
 CITY OF CANYONVILLE, DOUGLAS COUNTY, OREGON

FILED  
 Date: 1-24-2021 By: ESJ  
 This survey consists of:  
 Map: ST. HWY 15-035 A-F  
 Narrative: \_\_\_\_\_  
 Corner Rpt: \_\_\_\_\_  
 DOUGLAS COUNTY  
 SURVEYOR

**NARRATIVE CONTINUED:**

**CANYONVILLE SOUTH PROJECT CONTROL:**

THE BASIS OF BEARINGS AND COORDINATES FOR THIS SURVEY IS THE OREGON COORDINATE REFERENCE SYSTEM (OGRS) - COTTAGE GROVE - CANYONVILLE ZONE. THE OGRS NORTHING AND EASTING PROJECTION PARAMETERS ARE REFERENCED IN O.A.R. 734-005-0015. HORIZONTAL DATUM IS NAD 83 (2011) EPOCH 2010.00. VERTICAL DATUM IS NAVD88. ALL LINEAR VALUES ARE EXPRESSED IN INTERNATIONAL FEET.

PRIMARY CONTROL CONSISTS OF TWO PRIMARY PROJECT CONTROL STATIONS AND SIX SECONDARY CONTROL STATIONS. TWO-HOUR STATIC SESSIONS WERE OBSERVED AT PROJECT CONTROL STATIONS 1 AND 6. ALL PROJECT CONTROL STATION POSITIONS WERE ESTABLISHED USING A COMBINATION OF GLOBAL NAVIGATION SATELLITE SYSTEM (GNSS) OBSERVATIONS, TERRESTRIAL TOTAL STATION MEASUREMENTS, AND DIGITAL LEVEL OBSERVATIONS.

GNSS BASELINE VECTORS, TOGETHER WITH TERRESTRIAL OBSERVATIONS, WERE ADJUSTED USING LEAST SQUARES ANALYSIS (STARNET V9.0). THE NETWORK WAS CONSTRAINED BY HOLDING THE PUBLISHED OREGON REAL-TIME GNSS NETWORK (ORGN) LATITUDE AND LONGITUDE OF THREE CONTINUOUSLY OPERATING REFERENCE STATIONS (CORS): RDL2, RSBG, AND PSPT. THE RESULTING ERROR SEMI-MAJOR AXIS LENGTHS, AT THE 95% CONFIDENCE LEVEL FOR PRIMARY AND SECONDARY CONTROL POINTS, WERE UNDER 0.03 FEET IN ABSOLUTE ACCURACY. FINAL PROJECT COORDINATES WERE ESTABLISHED BY PROJECTING THE ADJUSTED NETWORK POSITIONS TO THE OGRS - COTTAGE GROVE CANYONVILLE ZONE, REPRESENTING APPROXIMATE GROUND DISTANCES. ALL OBSERVATIONS WERE MADE IN DECEMBER 2020, UTILIZING LEICA TS15 TOTAL STATION AND LEICA GS14 GNSS RECEIVERS WITH CS15 DATA COLLECTOR.

NETWORK POINTS SET DURING THIS SURVEY DO NOT REPRESENT PROPERTY LINES OR RIGHT OF WAY LINES. THEY ARE INTENDED TO PERPETUATE THE ALIGNMENTS AND RIGHT OF WAY DEVELOPED FOR THIS PROJECT IN CONFORMANCE WITH ORS CHAPTER 209 SECTION 155.

**MONUMENTS:**

HORIZONTAL POSITIONS OF THE FOUND MONUMENTS WERE OBTAINED USING TWO METHODS: REAL-TIME KINEMATIC (RTK) GPS MEASUREMENTS AND TERRESTRIAL OBSERVATIONS FROM HORIZONTAL CONTROL WHERE RTK WAS NOT FEASIBLE. MONUMENTS WERE OBSERVED TWICE, WITH A MINIMUM OF FORTY-FIVE MINUTES BETWEEN RTK OBSERVATIONS, AND THEN MEANING THE VALUES. TERRESTRIAL OBSERVATION METHODS FOLLOWED ODOT PROCEDURES WITH TWO OBSERVATIONS.

**CENTER LINE RESOLUTION OF INTERSTATE HIGHWAY 5:**

DUE TO THE ABSENCE OF HIGHWAY CENTER LINE MONUMENTATION, SEVERAL DIFFERENT RECORDS WERE CALCULATED AND COMBINED IN ORDER TO DETERMINE AND RESOLVE THE POSITION AND ORIENTATION OF THE CENTER LINE ALIGNMENT FOR THAT PORTION OF INTERSTATE HIGHWAY 5 ("I-5" LINE) SITUATED WITHIN THE SOUTHERLY PROJECT AREA.

THE CENTER LINE ALIGNMENT AND RIGHT OF WAY INFORMATION ACCORDING TO STATE HIGHWAY MAP 15-019, "MAP OF SURVEY FOR ODOT RIGHT OF WAY", DATED 12/20/06, WAS CALCULATED AND ROTATED TO MATCH THE BEARING AS ESTABLISHED BETWEEN POINT 2033, A 5/8" IRON ROD WITH YELLOW PLASTIC CAP MARKED "AES INC", FOUND ON THE WESTERLY RIGHT OF WAY LINE OF SAID INTERSTATE HIGHWAY 5 AT "I-5" STATION 41+68.98, 239.04 FT RIGHT, SAID POINT ALSO BEING THE NORTHEASTERLY CORNER OF BLOCK 17, "CANYONVILLE REPLAT", AND POINT 2017, A 5/8" IRON ROD WITH YELLOW PLASTIC CAP MARKED "R. BROWN PLS 2391", FOUND ON SAID WESTERLY RIGHT OF WAY LINE AT "I-5" STATION 59+02.86, 111.86 FT RIGHT.

THE DISTANCE MEASURED BETWEEN THESE TWO FOUND RIGHT OF WAY MONUMENTS MATCHED THE DIMENSION CALCULATED FROM SAID STATE HIGHWAY MAP AND WAS USED AS THE BASIS OF ROTATION TO FIT THE RECORD LINE WORK TO THE FOUND MONUMENTATION.

IN ORDER TO EXTEND THE CENTER LINE ALIGNMENT NORTHERLY AND GIVE SOME CONTEXT BY SHOWING THE RELATIONSHIP BETWEEN THE 2 CANYONVILLE PROJECT SITES, CENTER LINE ALIGNMENTS ACCORDING TO ODOT ROLL MAP 8B-16-18 AND ODOT ROLL MAP 9B-4-27 WERE CALCULATED AND ROTATED TO MATCH THE BEARING BETWEEN STATION 36+20.33 PI AND STATION 80+64.48 PI AS SHOWN ON SAID STATE HIGHWAY MAP 15-019.

**NARRATIVE CONTINUED:**

DUE TO THE PI TO PI LENGTH OF THE CALCULATED ALIGNMENT FROM THE ODOT ROLL MAPS BEING 0.25 FEET SHORTER THAN THE CORRESPONDING ALIGNMENT LENGTH PER THE STATE HIGHWAY MAP, THE CALCULATED ODOT MAP ALIGNMENT WAS TIED TO THE PREVIOUSLY CALCULATED STATE HIGHWAY MAP ALIGNMENT AT STATION 51+61.12, SHOWN ON SAID STATE HIGHWAY MAP AS THE POINT OF INTERSECTION BETWEEN THE CENTER LINE ALIGNMENT AND THE PROJECTED NORTHERLY LINE OF SW FIFTH STREET.

THIS PARTICULAR STATION WAS CHOSEN AS THE POINT TO MATCH DUE TO ITS CENTRAL POSITION RELATIVE TO THE SOUTHERLY PROJECT AREA.

AS AN OVERALL CHECK, THE CENTER LINE ALIGNMENT ACCORDING TO (METRIC) STATE HIGHWAY MAP 15-002, "HORIZONTAL CONTROL, RECOVERY AND RETRACEMENT MAP", FILED AS SURVEY M129-39 AND DATED 4/29/1999, WAS CALCULATED, CONVERTED TO INTERNATIONAL FEET AND ROTATED TO FIT BETWEEN SAID P.I. STATIONS PER STATE HIGHWAY MAP 15-019.

IN DOING SO, WE WERE ABLE TO VERIFY THE POSITION AND ORIENTATION OF OUR PREVIOUSLY CALCULATED LINE WORK BY EXAMINING THE DIFFERENCES BETWEEN FIELD MEASUREMENTS AND THE RECORD COORDINATES OF 3 TIED HORIZONTAL CONTROL POINTS THAT WERE SET BY ODOT ACCORDING TO SAID STATE HIGHWAY MAP 15-002. SAID ODOT CONTROL POINTS AND MONUMENTS WERE FOUND TO BE WITHIN AN AVERAGE DISTANCE OF 0.05 FT FROM OUR CALCULATED POSITIONS.

THE RIGHT OF WAY ALONG THE WESTERLY LINE OF INTERSTATE HIGHWAY 5 WAS DETERMINED AS SHOWN ACCORDING TO STATE HIGHWAY MAP 15-019. I FOUND AND HELD THE SAME RIGHT OF WAY ANGLE POINT MONUMENTS THAT WERE HELD PER SAID MAP, EXCEPT FOR POINT 2005 WHICH WAS FOUND BENT AND LEANING OVER. A RESOLVED POSITION WAS CALCULATED FOR THIS POINT BEING PARALLEL WITH AND 60 FEET SOUTHERLY OF THE NORTHERLY LINE OF SW FIFTH STREET ACCORDING TO "GOODELL TRACT" AND ALSO BEING 158.92 FEET FROM POINT 2006 ACCORDING TO SAID STATE HIGHWAY MAP 15-019.

**CENTER LINE RESOLUTION OF W FIRST STREET (ORIGINALLY PLATTED AS FIFTH ST):**

DETERMINED BY A LINE PARALLEL WITH AND OFFSET 30 FEET NORTHWESTERLY FROM POINT 2033 TO POINT 2034 PER STATE HIGHWAY MAP 15-019 AND SURVEY M33-26. THE RIGHT OF WAY WIDTH OF W FIRST STREET IS 60 FEET IN TOTAL, OFFSET 30 FEET ON EACH SIDE OF THE DETERMINED CENTER LINE ACCORDING TO "CANYONVILLE REPLAT" AND SUPPORTED BY SURVEY M33-26.

**CENTER LINE RESOLUTION OF SW FOURTH STREET (ORIGINALLY PLATTED AS SECOND ST):**

DETERMINED BY A LINE FROM POINT 2002 TO THE MIDPOINT BETWEEN POINTS 2014 AND 2015 PER SURVEYS CS 65/103-14, M32-15 AND M132-14. THE RIGHT OF WAY WIDTH OF S.W. FOURTH STREET IS 60 FEET IN TOTAL, OFFSET 30 FEET ON EACH SIDE OF THE DETERMINED CENTER LINE ACCORDING TO "CANYONVILLE REPLAT" AND SUPPORTED BY SURVEYS M32-15, M42-78 AND M132-14.

**CENTER LINE RESOLUTION OF SW FIFTH STREET SITUATED EASTERLY OF INTERSTATE HIGHWAY 5 (ORIGINALLY PLATTED AS FIRST ST):**

DETERMINED BY A LINE FROM POINT 2000 TO A POINT BEING PERPENDICULAR TO AND 30 FEET DISTANT FROM POINT 2010 PER SURVEYS M32-15 AND M132-14. THE RIGHT OF WAY WIDTH OF SW FIFTH STREET IS 60 FEET IN TOTAL, OFFSET 30 FEET ON EACH SIDE OF THE DETERMINED CENTER LINE ACCORDING TO "CANYONVILLE REPLAT" AND SUPPORTED BY SURVEYS CS 55/14-1, M32-15, M42-78, M85-79 AND M132-14.

**CENTER LINE RESOLUTION OF SW PINE AVENUE:**

DETERMINED BY A LINE FROM POINT 2002 TO A POINT BEING PERPENDICULAR TO AND 25 FEET DISTANT FROM POINT 2007 PER SURVEYS CS 65/103-14 AND M165-76. THE RIGHT OF WAY WIDTH OF S.W. PINE AVENUE IS 50 FEET IN TOTAL, OFFSET 25 FEET ON EACH SIDE OF THE DETERMINED CENTER LINE ACCORDING TO "CANYONVILLE REPLAT" AND SUPPORTED BY SURVEYS M85-79 AND M132-14.

**CANYONVILLE SOUTH REFERENCES:**

ODOT RIGHT OF WAY MAPS  
 6B-34-18  
 8B-16-18  
 8B-30-24  
 9B-4-27

DOUGLAS COUNTY STATE HIGHWAY MAPS  
 ST. HWY. 15-002 (IN METRIC UNITS)  
 ST. HWY. 15-019

DOUGLAS COUNTY SUBDIVISION PLATS  
 CANYONVILLE (VOL. 2, PG. 19)  
 CANYONVILLE REPLAT (VOL. 2, PG. 20)  
 GOODELL TRACT (VOL. 6, PG. 72)

**DOUGLAS COUNTY SURVEYS**


CS 55/14-1  
 CS 55/24  
 CS 65/103-14  
 M32-15  
 M33-26  
 M42-78  
 M50-36  
 M85-79  
 M98-24  
 M104-64  
 M116-28  
 M119-56  
 M119-60  
 M132-14  
 M132-49  
 M165-76  
 M167-72

**DOUGLAS COUNTY DOCUMENTS**

84-03367  
 88-09329  
 2016-005879  
 2017-011099

FILE NAME: S\_K22388\_CRR\_CANYONVILLE.DGN

  
**DAVID EVANS  
 AND ASSOCIATES INC.**  
 2100 S River Parkway, Suite 100  
 Portland Oregon 97201  
 Phone: 503.223.6663

REGISTERED  
 PROFESSIONAL  
 LAND SURVEYOR  
  
 OREGON  
 JANUARY 10, 2006  
 ROBERT R. JACKSON  
 47721  
 RENEWS: 6/30/2023

**OREGON DEPARTMENT OF TRANSPORTATION**

HORIZONTAL CONTROL, RECOVERY AND RETRACEMENT MAP

REGION 3 DISTRICT 7  
 DOUGLAS COUNTY ADA RAMP  
 MILEPOSTS 98.27 TO 99.80  
 CITY OF CANYONVILLE,  
 DOUGLAS COUNTY, OREGON



ODOT REGION 3 HQ  
 3500 NW STEWART PARKWAY  
 ROSEBURG, OREGON KEY NO. 22388

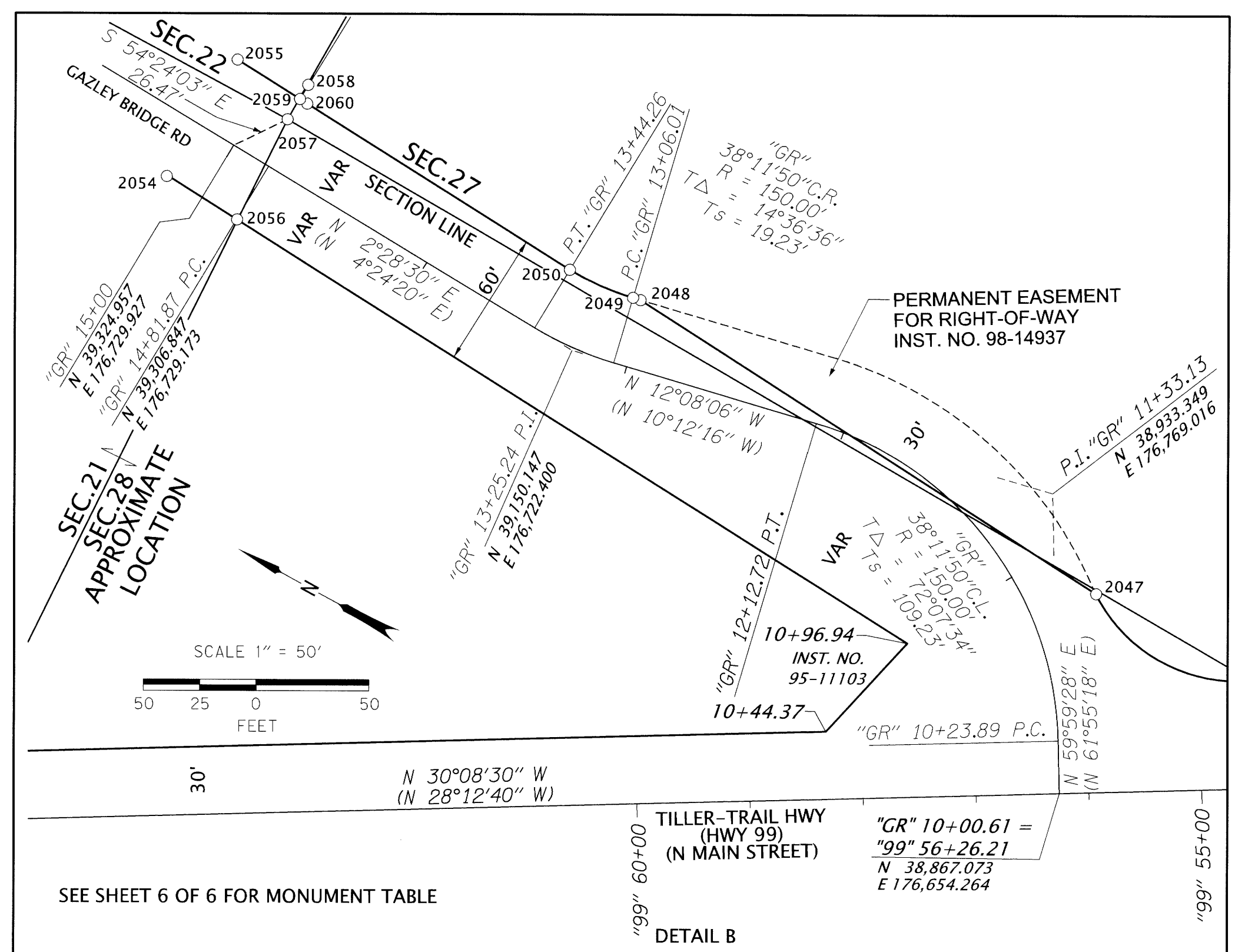
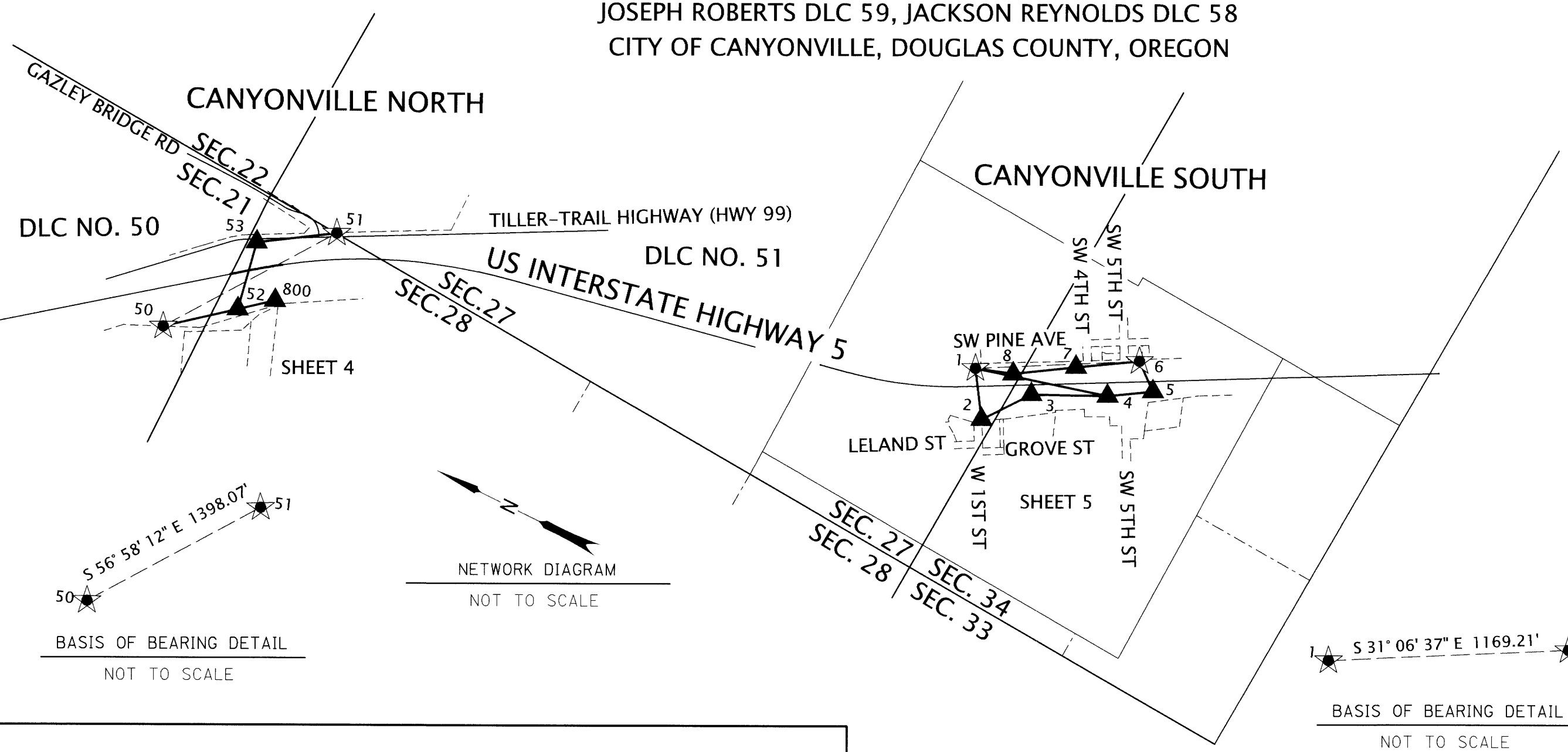
DECEMBER 15, 2021  
 SCALE: N/A  
 SHEET 2 OF 6

**ST. HWY. 15-035 B**

SE 1/4 SEC 21 T30S R5W WM, SW 1/4 SEC 22 T30S R5W WM, NE 1/4 SEC 28 T30S R5W WM  
 NW 1/4 SEC 27 T30S R5W WM, SW 1/4 SEC 27 T30S R5W WM, NW 1/4 SEC 34 T30S R5W WM  
 BEING PART OF THE WILLIAM L. COLVIG DLC 50, JAMES G. CLARK DLC 51,  
 JOSEPH ROBERTS DLC 59, JACKSON REYNOLDS DLC 58  
 CITY OF CANYONVILLE, DOUGLAS COUNTY, OREGON

FILED  
 Date: 12-14-2022 By: DE  
 This survey consists of:  
 Map: ST HWY 15-035 A-F  
 Narrative: \_\_\_\_\_  
 Corner Rpt: \_\_\_\_\_  
 DOUGLAS COUNTY  
 SURVEYOR

LEGEND	
	SET GPS STATION
	SET NETWORK POINT
	LINES OF OBSERVATION
	GNSS OBSERVATION
BD	BRASS DISK
IR	IRON ROD
LT	LEFT
RT	RIGHT
RPC	RED PLASTIC CAP
W/	WITH



NETWORK POINT COORDINATE TABLE

PT. NO.	OCRS NORTHING	OCRS EASTING	STATION	OFFSET	DATE	DESCRIPTION
1	34326.108	178083.236	41+31.31 "I5"	127.58 LT	01/08/2021	SET 1-1/8" BD "DEA CONTROL", Flush in Concrete
2	34113.599	177785.926	41+65.21 "I5"	236.26 RT	01/08/2021	SET 1-1/8" BD "DEA CONTROL", Flush in Concrete
3	33887.657	178110.938	45+24.07 "I5"	69.26 RT	01/08/2021	SET 1/2" IR W/ RPC "DEA CONTROL", Flush
4	33406.085	178361.253	50+66.18 "I5"	95.47 RT	01/08/2021	SET 1/2" IR W/ RPC "DEA CONTROL", Flush
5	33138.105	178544.363	53+89.91 "I5"	72.20 RT	01/08/2021	SET 1-1/8" BD "DEA CONTROL", Flush in Concrete
6	33325.063	178687.347	53+00.37 "I5"	145.47 LT	01/08/2021	SET 1/2" IR W/ RPC "DEA CONTROL", Flush
7	33701.445	178433.931	48+47.59 "I5"	116.04 LT	01/08/2021	SET 5/8" IR W/ RPC "DEA CONTROL", Flush
8	34070.894	178178.631	43+99.84 "I5"	81.49 LT	01/08/2021	SET 1/2" IR W/ RPC "DEA CONTROL", Flush
50	39530.798	175569.396	461+17.27 "I5"	268.37 RT	01/08/2021	SET 1/2" IR W/ RPC "DEA CONTROL", Flush
51	38768.743	176741.514	469+27.42 "I5"	186.92 LT	01/08/2021	SET 1/2" IR W/ RPC "DEA CONTROL", Flush
52	39124.648	175930.645	461+60.61 "I5"	252.79 RT	01/08/2021	SET 1/2" IR W/ RPC "DEA CONTROL", Flush
53	39235.054	176412.466	463+81.55 "I5"	187.54 LT	01/08/2021	SET 1/2" IR W/ RPC "DEA CONTROL", Flush
800	38922.309	176110.969	464+37.50 "I5"	243.30 RT	01/08/2021	SET 1/2" IR W/ RPC "DEA CONTROL", Flush

THE INTENT OF THIS SURVEY IS TO SHOW THE BOUNDARY RELATIVE TO THE PROPOSED CONSTRUCTION OF NEW ADA RAMPS AT SELECT CANYONVILLE LOCATIONS. DUE TO THE GENERAL LAYOUT OF THE PROPOSED RAMP AREAS, THE CANYONVILLE LOCATIONS WERE GROUPED INTO TWO SEPARATE SITES SITUATED APPROXIMATELY ONE MILE APART - CANYONVILLE NORTH AND CANYONVILLE SOUTH. AS A RESULT, EACH SITE IS SEPARATE AND HAS BEEN RESOLVED INDEPENDENTLY.

FILE NAME: S\_K22388\_CRR\_CANYONVILLE.DGN

**DAVID EVANS AND ASSOCIATES INC.**  
 2100 S River Parkway, Suite 100  
 Portland Oregon 97201  
 Phone: 503.223.6663

REGISTERED PROFESSIONAL LAND SURVEYOR  
  
 OREGON  
 JANUARY 10, 2006  
 ROBERT R. JACKSON  
 47721  
 RENEWS: 6/30/2023

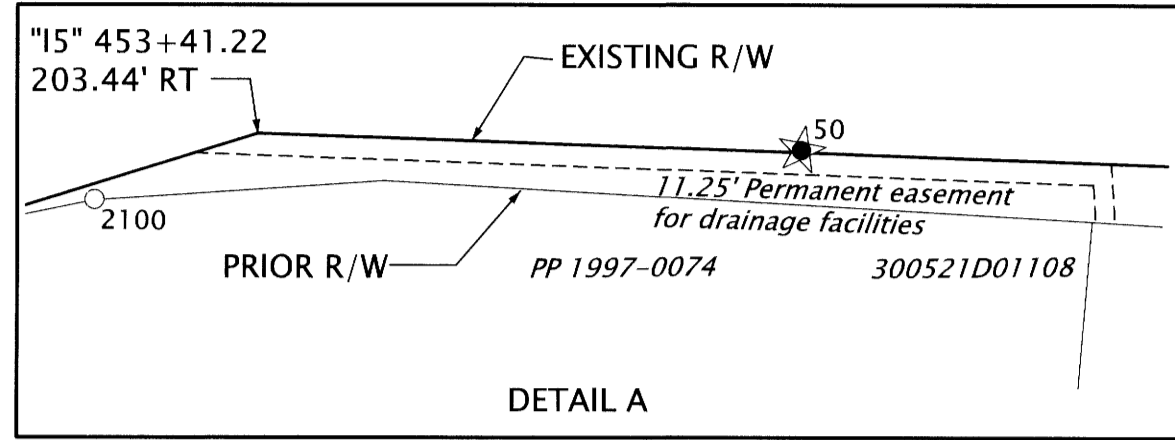
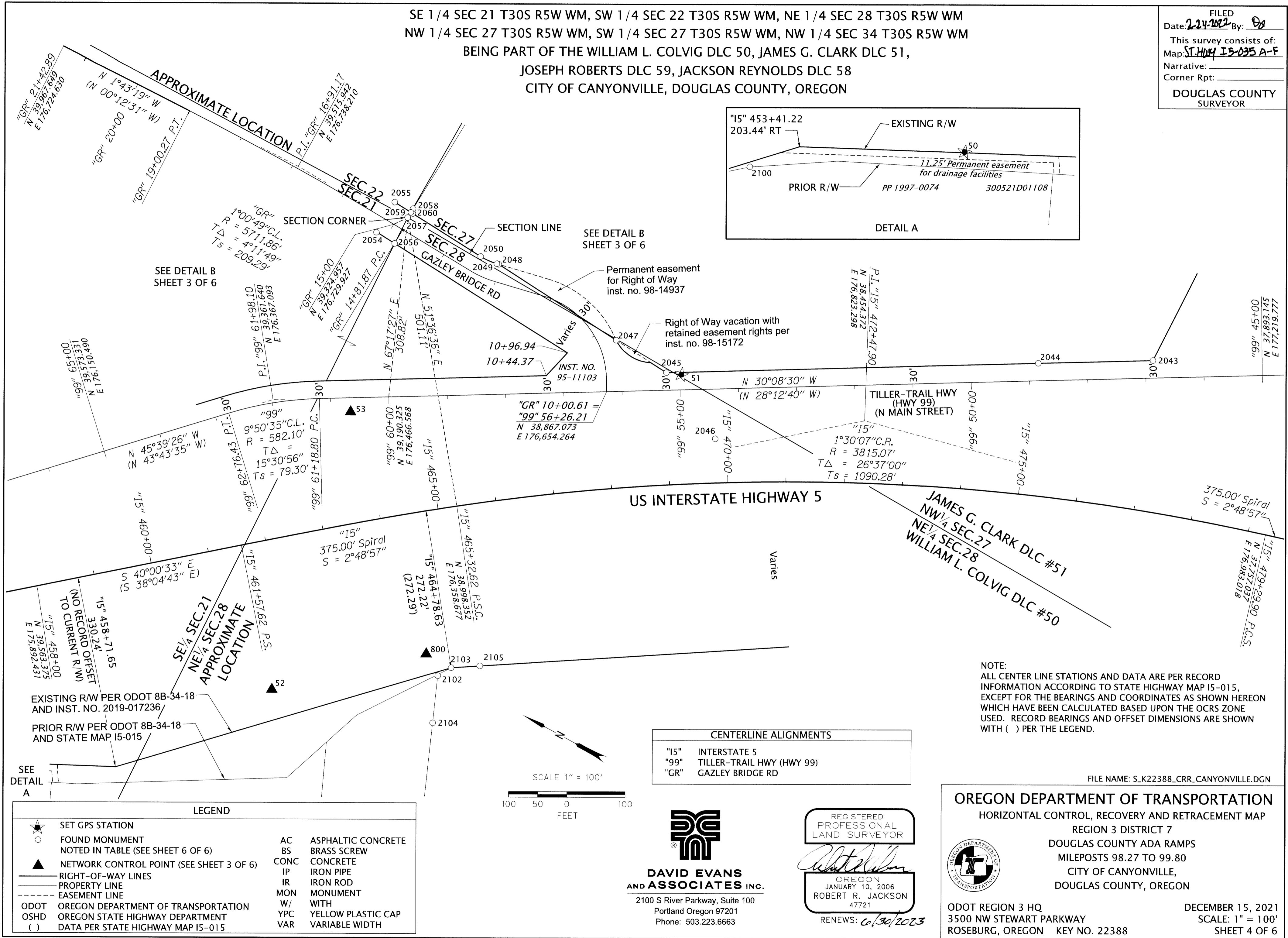
**OREGON DEPARTMENT OF TRANSPORTATION**  
 HORIZONTAL CONTROL, RECOVERY AND RETRACEMENT MAP  
 REGION 3 DISTRICT 7  
 DOUGLAS COUNTY ADA RAMPS  
 MILEPOSTS 98.27 TO 99.80  
 CITY OF CANYONVILLE,  
 DOUGLAS COUNTY, OREGON

ODOT REGION 3 HQ  
 3500 NW STEWART PARKWAY  
 ROSEBURG, OREGON KEY NO. 22388

DECEMBER 15, 2021  
 SCALE: N/A  
 SHEET 3 OF 6

SE 1/4 SEC 21 T30S R5W WM, SW 1/4 SEC 22 T30S R5W WM, NE 1/4 SEC 28 T30S R5W WM  
 NW 1/4 SEC 27 T30S R5W WM, SW 1/4 SEC 27 T30S R5W WM, NW 1/4 SEC 34 T30S R5W WM  
 BEING PART OF THE WILLIAM L. COLVIG DLC 50, JAMES G. CLARK DLC 51,  
 JOSEPH ROBERTS DLC 59, JACKSON REYNOLDS DLC 58  
 CITY OF CANYONVILLE, DOUGLAS COUNTY, OREGON

FILED  
 Date: 2-24-2022 By: [Signature]  
 This survey consists of:  
 Map: ST HWY 15-035 A-F  
 Narrative:  
 Corner Rpt:  
 DOUGLAS COUNTY SURVEYOR

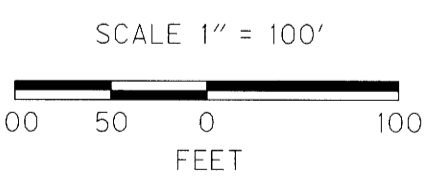


SEE DETAIL B SHEET 3 OF 6

SEE DETAIL B SHEET 3 OF 6

NOTE:  
 ALL CENTER LINE STATIONS AND DATA ARE PER RECORD INFORMATION ACCORDING TO STATE HIGHWAY MAP 15-015, EXCEPT FOR THE BEARINGS AND COORDINATES AS SHOWN HEREON WHICH HAVE BEEN CALCULATED BASED UPON THE OCRS ZONE USED. RECORD BEARINGS AND OFFSET DIMENSIONS ARE SHOWN WITH ( ) PER THE LEGEND.

CENTERLINE ALIGNMENTS	
"15"	INTERSTATE 5
"99"	TILLER-TRAIL HWY (HWY 99)
"GR"	GAZLEY BRIDGE RD



LEGEND			
	SET GPS STATION	AC	ASPHALTIC CONCRETE
	FOUND MONUMENT NOTED IN TABLE (SEE SHEET 6 OF 6)	BS	BRASS SCREW
	NETWORK CONTROL POINT (SEE SHEET 3 OF 6)	CONC	CONCRETE
	RIGHT-OF-WAY LINES	IP	IRON PIPE
	PROPERTY LINE	IR	IRON ROD
	EASEMENT LINE	MON	MONUMENT
	ODOT OREGON DEPARTMENT OF TRANSPORTATION	W/	WITH
	OSHD OREGON STATE HIGHWAY DEPARTMENT	YPC	YELLOW PLASTIC CAP
	( ) DATA PER STATE HIGHWAY MAP 15-015	VAR	VARIABLE WIDTH

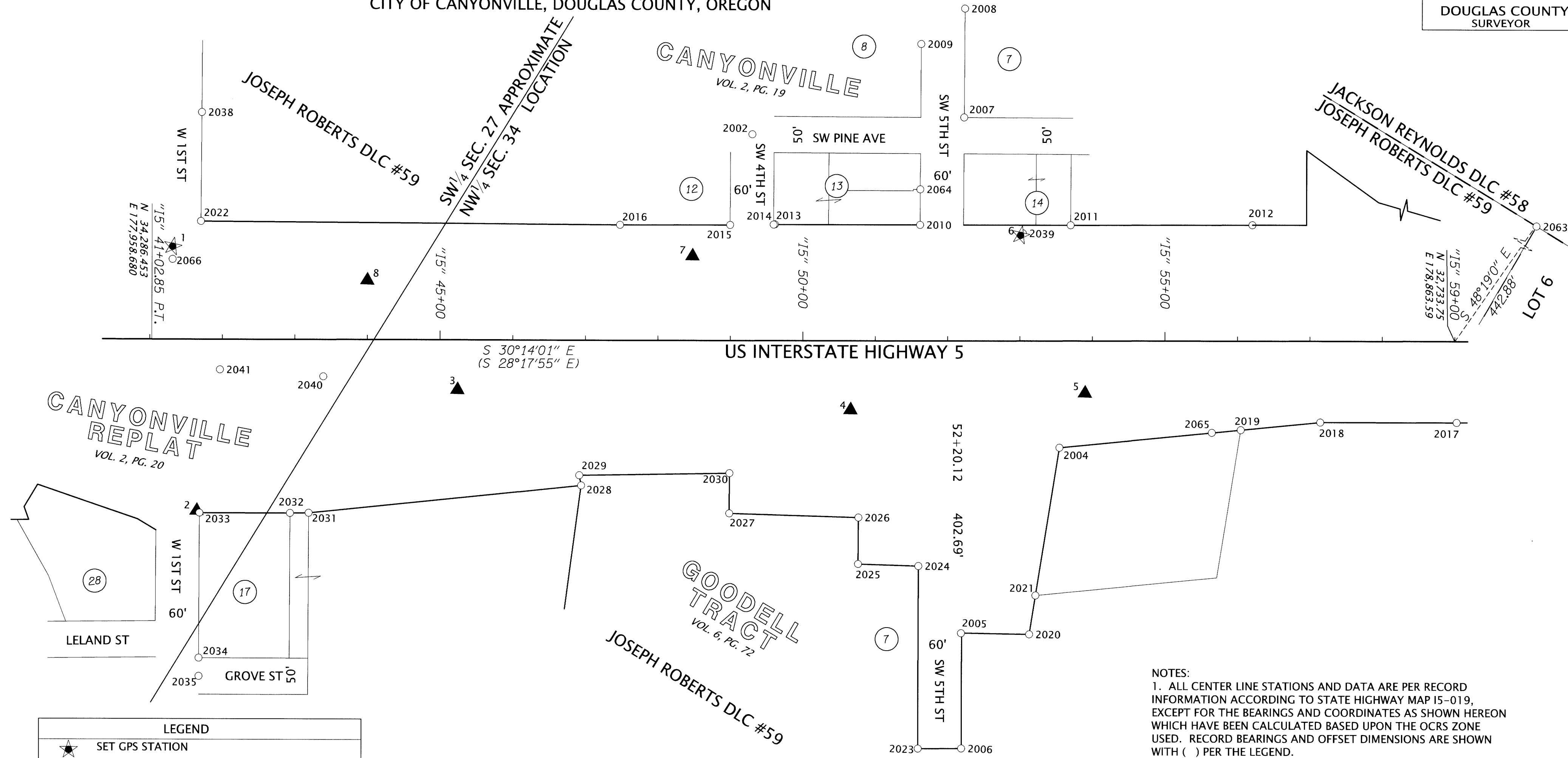
**DAVID EVANS AND ASSOCIATES INC.**  
 2100 S River Parkway, Suite 100  
 Portland Oregon 97201  
 Phone: 503.223.6663

REGISTERED PROFESSIONAL LAND SURVEYOR  
 [Signature]  
 OREGON  
 JANUARY 10, 2006  
 ROBERT R. JACKSON  
 47721  
 RENEWS: 6/30/2023

FILE NAME: S\_K22388\_CRR\_CANYONVILLE.DGN  
**OREGON DEPARTMENT OF TRANSPORTATION**  
 HORIZONTAL CONTROL, RECOVERY AND RETRACEMENT MAP  
 REGION 3 DISTRICT 7  
 DOUGLAS COUNTY ADA RAMP  
 MILEPOSTS 98.27 TO 99.80  
 CITY OF CANYONVILLE,  
 DOUGLAS COUNTY, OREGON  
 ODOT REGION 3 HQ  
 3500 NW STEWART PARKWAY  
 ROSEBURG, OREGON KEY NO. 22388  
 DECEMBER 15, 2021  
 SCALE: 1" = 100'  
 SHEET 4 OF 6

SE 1/4 SEC 21 T30S R5W WM, SW 1/4 SEC 22 T30S R5W WM, NE 1/4 SEC 28 T30S R5W WM  
 NW 1/4 SEC 27 T30S R5W WM, SW 1/4 SEC 27 T30S R5W WM, NW 1/4 SEC 34 T30S R5W WM  
 BEING PART OF THE WILLIAM L. COLVIG DLC 50, JAMES G. CLARK DLC 51,  
 JOSEPH ROBERTS DLC 59, JACKSON REYNOLDS DLC 58  
 CITY OF CANYONVILLE, DOUGLAS COUNTY, OREGON

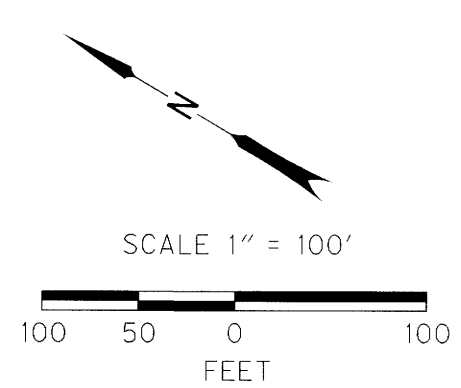
FILED  
 Date: 2-24-2023 By: DR  
 This survey consists of:  
 Map: ST. HWY 15-035 A-F  
 Narrative: \_\_\_\_\_  
 Corner Rpt: \_\_\_\_\_  
 DOUGLAS COUNTY  
 SURVEYOR



NOTES:  
 1. ALL CENTER LINE STATIONS AND DATA ARE PER RECORD INFORMATION ACCORDING TO STATE HIGHWAY MAP 15-019, EXCEPT FOR THE BEARINGS AND COORDINATES AS SHOWN HEREON WHICH HAVE BEEN CALCULATED BASED UPON THE OCRS ZONE USED. RECORD BEARINGS AND OFFSET DIMENSIONS ARE SHOWN WITH ( ) PER THE LEGEND.  
 2. ALL MONUMENTS FOUND ALONG THE RIGHT OF WAY, EXCEPT FOR POINT 2005, WERE HELD AS ANGLE POINTS PER RECORD INFORMATION ACCORDING TO SAID STATE HIGHWAY MAP 15-019. REFER TO THE MONUMENT TABLE ON SHEET 6 OF 6 FOR STATION AND OFFSET DATA.

LEGEND	
	SET GPS STATION
	FOUND MONUMENT NOTED IN TABLE (SEE SHEETS 6 OF 6)
	NETWORK CONTROL POINT (SEE SHEET 3 OF 6)
	RIGHT-OF-WAY LINES
	PROPERTY LINE
	EASEMENT LINE
ODOT	OREGON DEPARTMENT OF TRANSPORTATION
OSHD	OREGON STATE HIGHWAY DEPARTMENT
AC	ASPHALTIC CONCRETE
BS	BRASS SCREW
CONC	CONCRETE
IP	IRON PIPE
IR	IRON ROD
MON	MONUMENT
W/	WITH
YPC	YELLOW PLASTIC CAP
( )	DATA PER STATE HIGHWAY MAP 15-019

CENTERLINE ALIGNMENT	
"15"	INTERSTATE 5



**DAVID EVANS AND ASSOCIATES INC.**  
 2100 S River Parkway, Suite 100  
 Portland Oregon 97201  
 Phone: 503.223.6663

REGISTERED PROFESSIONAL LAND SURVEYOR  
  
 OREGON  
 JANUARY 10, 2006  
 ROBERT R. JACKSON  
 47721  
 RENEWS: 6/30/2023

FILE NAME: S\_K22388\_CRR\_CANYONVILLE.DGN

**OREGON DEPARTMENT OF TRANSPORTATION**  
 HORIZONTAL CONTROL, RECOVERY AND RETRACEMENT MAP  
 REGION 3 DISTRICT 7  
 DOUGLAS COUNTY ADA RAMP  
 MILEPOSTS 98.27 TO 99.80  
 CITY OF CANYONVILLE,  
 DOUGLAS COUNTY, OREGON

ODOT REGION 3 HQ  
 3500 NW STEWART PARKWAY  
 ROSEBURG, OREGON KEY NO. 22388

DECEMBER 15, 2021  
 SCALE: 1" = 100'  
 SHEET 5 OF 6

ST. HWY. 15-035 E

SE 1/4 SEC 21 T30S R5W WM, SW 1/4 SEC 22 T30S R5W WM, NE 1/4 SEC 28 T30S R5W WM  
 NW 1/4 SEC 27 T30S R5W WM, SW 1/4 SEC 27 T30S R5W WM, NW 1/4 SEC 34 T30S R5W WM  
 BEING PART OF THE WILLIAM L. COLVIG DLC 50, JAMES G. CLARK DLC 51,  
 JOSEPH ROBERTS DLC 59, JACKSON REYNOLDS DLC 58  
 CITY OF CANYONVILLE, DOUGLAS COUNTY, OREGON

FILED  
 Date: 12/14/2022 By: DA  
 This survey consists of:  
 Map: ST HWY 15-035A-F  
 Narrative: \_\_\_\_\_  
 Corner Rpt: \_\_\_\_\_  
 DOUGLAS COUNTY  
 SURVEYOR


RECOVERED MONUMENT LIST

PT. NO.	OCRS NORTHING	OCRS EASTING	STATION	OFFSET	DATE	DESCRIPTION	SOURCE
2000	33621.29	178983.29	51+93.45 "15"	550.30 LT	12/18/2020	BS IN CONC IN MON BOX, 0.2' DOWN	STATE HWY 15-019A & CS 40/104
2002	33715.00	178620.47	49+29.80 "15"	284.03 LT	12/18/2020	5/8" IR W/PPC "LANDMARK SURVEYING INC.", IN MON BOX, 0.2' DOWN	CS 65/103-14
2004	33130.70	178461.76	53+54.71 "15"	147.30 RT	12/18/2020	3/4" IP, 0.3' UP	STATE HWY 15-019A, M119-60A-C & M104-64
2005	33118.92	178172.63	52+19.31 "15"	403.04 RT	12/18/2020	5/8" IR W/YPC "R. BROWN PLS 2391", LEANING W'LY, 1.2' UP	M119-60A-C
2006	33038.67	178035.85	52+19.76 "15"	561.61 RT	12/18/2020	5/8" IR W/YPC "R. BROWN ???", PARTIALLY ILLEGIBLE, 0.8' DOWN	M119-60A-C
2007	33474.27	178788.07	52+22.18 "15"	307.62 LT	12/19/2020	5/8" IR, 0.1' UP	M165-76
2008	33549.04	178918.09	52+23.04 "15"	457.61 LT	12/19/2020	3/4" IP, FLUSH IN AC	M85-79
2009	33576.64	178845.72	51+62.76 "15"	408.97 LT	12/19/2020	5/8" IR, 0.1' DOWN	M42-78
2010	33452.16	178629.75	51+61.56 "15"	159.71 LT	12/19/2020	5/8" IR W/YPC "HULL RS 901"	M132-14
2011	33272.35	178734.22	53+69.51 "15"	159.42 LT	12/19/2020	5/8" IR, 0.1' UP	M50-36
2012	33055.93	178860.77	56+20.22 "15"	159.79 LT	12/19/2020	3/4" IP, 0.3' UP	M50-36
2013	33625.60	178529.05	49+61.01 "15"	160.03 LT	12/19/2020	3/4" IP, LEANING N'WLY, 0.1' UP	STATE HWY 15-019A & M132-14
2014	33626.82	178527.94	49+59.39 "15"	159.69 LT	12/19/2020	5/8" IR W/YPC "HULL RS 901", 0.1' DOWN	M132-14
2015	33678.41	178497.15	48+99.32 "15"	159.06 LT	12/19/2020	1-1/2" IP, 0.8' DOWN	M32-15
2016	33809.61	178420.59	47+47.42 "15"	158.97 LT	12/19/2020	1-1/2" IP, 0.5' DOWN	M32-15
2017	32674.96	178768.38	59+02.86 "15"	111.86 RT	12/19/2020	5/8" IR W/YPC "R. BROWN PLS 2391"	M119-60A-C
2018	32837.76	178673.48	57+14.41 "15"	111.88 RT	12/19/2020	5/8" IR W/YPC "AES INC", FLUSH	STATE HWY 15-019A
2019	32927.04	178608.97	56+04.79 "15"	122.66 RT	12/19/2020	5/8" IR W/YPC "R. BROWN PLS 2391"	M119-60A-C
2020	33036.84	178218.68	53+13.40 "15"	404.57 RT	12/19/2020	1/2" IP, FLUSH	STATE HWY 15-019A & M119-60A-C & M104-64
2021	33056.42	178269.40	53+22.03 "15"	350.90 RT	12/19/2020	5/8" IR, 0.2' UP	M104-64
2022	34310.04	178133.06	41+70.27 "15"	162.54 LT	12/20/2020	5/8" IR W/YPC "AES INC", FLUSH IN CONC WALK	STATE HWY 15-019A
2023	33090.32	178005.53	51+59.87 "15"	561.81 RT	12/20/2020	5/8" IR W/YPC "AES INC", 0.1' DOWN	STATE HWY 15-019A
2024	33216.51	178222.88	51+60.29 "15"	310.48 RT	12/20/2020	5/8" IR, BENT, 0.1' UP, TIED @ BEND	STATE HWY 15-019A
2025	33289.88	178183.38	50+77.01 "15"	307.67 RT	12/20/2020	5/8" IR, FLUSH IN CONC DRIVEWAY	STATE HWY 15-019A
2026	33321.97	178238.91	50+77.25 "15"	243.53 RT	12/20/2020	5/8" IR W/YPC "???" INC", PARTIALLY ILLEGIBLE, FLUSH IN AC ROADWAY	STATE HWY 15-019A
2027	33478.67	178153.78	48+99.00 "15"	238.18 RT	12/20/2020	5/8" IR W/YPC "AES INC", 0.3' UP	STATE HWY 15-019A
2028	33674.44	178083.54	46+94.49 "15"	200.29 RT	12/20/2020	5/8" IR, 0.1' UP	M119-56
2029	33683.75	178094.30	46+91.86 "15"	186.30 RT	12/20/2020	5/8" IR W/YPC "AES INC", 0.3' UP	STATE HWY 15-019A
2030	33506.40	178201.47	48+99.05 "15"	183.00 RT	12/20/2020	5/8" IR W/YPC "AES INC", 0.6' UP	STATE HWY 15-019A
2031	33978.89	177861.38	43+19.58 "15"	238.93 RT	12/21/2020	5/8" IR	M119-56
2032	34000.84	177848.11	48+99.05 "15"	239.35 RT	12/21/2020	5/8" IR, 0.1' DOWN IN AC	M33-26
2033	34108.96	177785.45	41+68.98 "15"	239.04 RT	12/21/2020	5/8" IR W/YPC "AES INC", FLUSH AT BSW	STATE HWY 15-019A
2034	34008.86	177612.32	41+68.28 "15"	439.02 RT	12/21/2020	5/8" IR, 0.1' DOWN	M33-26
2035	33996.22	177590.60	41+68.27 "15"	464.15 RT	12/21/2020	5/8" IR	STATE HWY 15-019A & CS M33-26
2038	34384.74	178263.14	41+71.23 "15"	312.53 LT	12/21/2020	5/8" IR, 0.1' DOWN	M98-24
2039	33323.85	178691.38	53+03.45 "15"	148.34 LT	12/21/2020	1/2" SQUARE IR W/ 1-1/2" ALUMINUM CAP "ODOT HORIZ CONTROL #504", 0.5' DOWN	I5-002
2040	34056.28	178033.54	43+39.41 "15"	51.22 RT	12/21/2020	1/2" SQUARE IR W/ 1-1/2" ALUMINUM CAP "ODOT HORIZ CONTROL 87", 0.8' DOWN	I5-002
2041	34184.06	177969.82	41+96.92 "15"	41.94 RT	12/21/2020	3-1/4" BD "???" 747+1987", PARTIALLY ILLEGIBLE	M-099
2043	38069.88	177151.80	46+86.97 "99"	29.96 RT	12/22/2020	3-1/4" BD "AP 10 DLC 51", PARTIALLY ILLEGIBLE	M145-3
2044	38240.38	177052.77	48+84.15 "99"	29.93 RT	12/22/2020	5/8" IR W/ 2" ALUMINUM CAP "AP 9", 0.3' DOWN	M145-3
2045	38792.81	176732.07	55+22.91 "99"	30.00 RT	12/22/2020	3-1/4" BD ON IP, ILLEGIBLE, 0.2' DOWN	M145-3
2046	38664.59	176672.94	459+80.66 "15"	75.38 LT	12/22/2020	5/8" IR W/ 1-1/2" ALUMINUM CAP "ODOT CONTROL 24", 0.2' DOWN	STATE HWY 15-015
2047	38895.10	176739.36	10+78.74 "GR"	30.20 RT	12/22/2020	5/8" IR W/ 2" ALUMINUM CAP, ILLEGIBLE, 0.4' DOWN	M145-3
2048	39134.24	176756.43	13+02.53 "GR"	29.92 RT	12/22/2020	5/8" IR W/ 2" ALUMINUM CAP, ILLEGIBLE, 0.2' DOWN	M145-3
2049	39137.62	176755.76	13+05.98 "GR"	29.98 RT	12/22/2020	5/8" IR W/ 2" ALUMINUM CAP, ILLEGIBLE, 0.3' DOWN	M145-3
2050	39168.05	176753.21	13+44.24 "GR"	30.00 RT	12/22/2020	5/8" IR W/ 1-1/2" ALUMINUM CAP "?? R-W", PARTIALLY ILLEGIBLE, 0.7' DOWN	DCSO CO. RD. #35A
2054	39344.38	176703.64	15+18.45 "GR"	27.01 LT	12/28/2020	1/2" IR, SMOOTH, LEANING W'LY, 0.4' DOWN	STATE HWY 15-015, M98-36 & CS 51/133-2
2055	39341.66	176763.93	15+17.94 "GR"	33.34 RT	12/28/2020	5/8" IR W/ 1-1/2" ALUMINUM CAP "DPT RW DOUGLAS CO RD", IN MON BOX, 0.2' DOWN	DCSO CO. RD. #35A
2056	39307.83	176701.79	14+81.68 "GR"	27.40 LT	12/29/2020	5/8" IR W/ 1-1/2" ALUMINUM CAP "DOUGLAS CO. RD DPT. R-W", 0.3' DOWN	DCSO CO. RD. #35A
2057	39309.55	176751.45	14+85.52 "GR"	22.14 RT	12/29/2020	2-1/2" BD "T30S R5W SEC. COR. RESET 1995"	CORNER RESTORATION PLSS ID # 400300
2058	39308.84	176769.14	14+85.57 "GR"	39.85 RT	12/29/2020	5/8" IR W/YPC, ILLEGIBLE, 0.2' DOWN	M112-47
2059	39309.03	176761.93	14+85.45 "GR"	32.63 RT	12/29/2020	3" BD, ILLEGIBLE, 0.7' DOWN	M145-3
2060	39305.27	176761.69	14+81.70 "GR"	32.55 RT	12/29/2020	5/8" IR W/ 1-1/2" ALUMINUM CAP "DOUGLAS CO. RD DPT. R-W", 0.5' DOWN	DCSO CO. RD. #35A
2063	32439.23	179194.35	62+89.91 "15"	137.47' LT	12/29/2020	5/8" IR, 0.9' DOWN 9 (SE CORNER DLC NO. 59)	OSHD/ODOT DRG 8B-30-24
2064	33476.44	178672.01	51+61.87 "15"	208.45 LT	12/31/2020	PK NAIL W/WASHER, NO MARKINGS	M132-14
2065	32959.57	178585.58	55+64.91 "15"	126.49 RT	12/31/2020	5/8" IR, 0.3' UP	OSHD/ODOT DRG 8B-30-24
2066	34317.35	178068.19	41+31.29 "15"	110.18 LT	01/05/2021	3" BD, "DOUGLAS SURVEYORS OFFICE VIRGI 1999"	DCSO V-035
2100	39842.15	175370.25	452+50.76 "15"	220.74 RT	12/28/2020	5/8" IR W/YPC "WYTCHERLEY LS 2724"	PP 1997-00588
2102	38887.26	176088.17	464+52.29 "15"	281.91 RT	12/28/2020	5/8" IR W/YPC "WYTCHERLEY LS 2724", 0.2' UP	PP 1997-00588
2103	38873.75	176111.08	464+78.63 "15"	272.22 RT	12/28/2020	5/8" IR, 0.1' DOWN	STATE HWY 15-015 & PP 1997-0074
2104	38856.00	176012.80	464+28.45 "15"	360.39 RT	12/28/2020	5/8" IR W/YPC "BENTZ SURVEY INC.", 0.7' UP	RM3-64
2105	38831.92	176137.48	465+31.40 "15"	276.82 RT	01/08/2021	5/8" IR, 0.1' DOWN	STATE HWY 15-015 & PP 1997-0074

LEGEND	
ODOT	OREGON DEPARTMENT OF TRANSPORTATION
OSHD	OREGON STATE HIGHWAY DEPARTMENT
AC	ASPHALTIC CONCRETE
BD	BRASS DISC
BS	BRASS SCREW
CONC	CONCRETE
LT	LEFT
IP	IRON PIPE
IR	IRON ROD
MON	MONUMENT
RT	RIGHT
W/	WITH
YPC	YELLOW PLASTIC CAP

CENTERLINE ALIGNMENTS	
"15"	INTERSTATE 5
"99"	TILLER-TRAIL HWY (HWY 99)
"GR"	GAZLEY BRIDGE RD

  
**DAVID EVANS**  
 AND ASSOCIATES INC.  
 2100 S River Parkway, Suite 100  
 Portland Oregon 97201  
 Phone: 503.223.6663

REGISTERED  
 PROFESSIONAL  
 LAND SURVEYOR  
  
 OREGON  
 JANUARY 10, 2006  
 ROBERT R. JACKSON  
 47721  
 RENEWS: 6/30/2023

FILE NAME: S\_K22388\_CRR\_CANYONVILLE.DGN

**OREGON DEPARTMENT OF TRANSPORTATION**  
 HORIZONTAL CONTROL, RECOVERY AND RETRACEMENT MAP  
 REGION 3 DISTRICT 7  
 DOUGLAS COUNTY ADA RAMPS  
 MILEPOSTS 98.27 TO 99.80  
 CITY OF CANYONVILLE,  
 DOUGLAS COUNTY, OREGON



ODOT REGION 3 HQ  
 3500 NW STEWART PARKWAY  
 ROSEBURG, OREGON KEY NO. 22388

DECEMBER 15, 2021  
 SCALE: N/A  
 SHEET 6 OF 6

ST. HWY. 15-035 F