

NW 1/4 AND NE 1/4 SEC 25 T27S R6W WM
CITY OF ROSEBURG, DOUGLAS COUNTY, OREGON

FILED
Date: 2-24-2022 By: [Signature]
This survey consists of:
Map: ST HWY 15-034 A & B
Narrative: _____
Corner Rpt: _____
DOUGLAS COUNTY
SURVEYOR

NARRATIVE:

PURPOSE OF SURVEY:

THE PURPOSE OF THIS SURVEY IS TO ESTABLISH PERMANENT HORIZONTAL CONTROL, RECOVER AND PERPETUATE EXISTING MONUMENTS, AND TO RESOLVE THE LOCATION OF THE EXISTING RIGHT OF WAY (R/W) CENTERLINE OF PORTLAND AVENUE; FOR THE PROPOSED OREGON DEPARTMENT OF TRANSPORTATION (ODOT) ROSEBURG CURB RAMP PROJECT, KEY NUMBER 22206. THIS SURVEY MEETS THE REQUIREMENTS OF ORS 209.155. ADJOINING BOUNDARIES LINES HAVE NOT BEEN RESOLVED IN THIS SURVEY BUT ARE SHOWN PER EXISTING SURVEYS OR OTHER AVAILABLE INFORMATION. FIELD WORK WAS PERFORMED FROM DECEMBER 18, 2020 TO FEBRUARY 19, 2021.

PORTLAND AVE PROJECT CONTROL:

THE BASIS OF BEARINGS FOR THIS SURVEY WAS ESTABLISHED UTILIZING THE DATUM REALIZATION OF NAD 83(2011) EPOCH 2010.00. COORDINATES ARE PROJECTED TO THE OREGON COORDINATE REFERENCE SYSTEM (OCRS) - COTTAGE GROVE - CANYONVILLE ZONE. THE OCRS NORTHING AND EASTING PROJECTION PARAMETERS ARE REFERENCED IN O.A.R. 734-005-0015. HORIZONTAL DATUM IS NAD 83 (2011) EPOCH 2010.00. VERTICAL DATUM IS NAVD88. ALL LINEAR VALUES ARE EXPRESSED IN INTERNATIONAL FEET. GRID COORDINATE ZONE DISTANCES CLOSELY MATCH GROUND DISTANCES.

PRIMARY CONTROL CONSISTS OF TWO PRIMARY PROJECT CONTROL STATIONS. TWO-HOUR STATIC SESSIONS WERE OBSERVED AT PROJECT CONTROL STATIONS 5 AND 6. ALL PROJECT CONTROL STATION POSITIONS WERE ESTABLISHED USING A COMBINATION OF GLOBAL NAVIGATION SATELLITE SYSTEM (GNSS) OBSERVATIONS, TERRESTRIAL TOTAL STATION MEASUREMENTS, AND DIGITAL LEVEL OBSERVATIONS.

GNSS BASELINE VECTORS, TOGETHER WITH TERRESTRIAL OBSERVATIONS, WERE ADJUSTED USING LEAST SQUARES (STARNET V9.0). THE NETWORK WAS CONSTRAINED USING VALUES FROM ONLINE POSITIONING USER SERVICE (OPUS) STATIC SOLUTIONS FOR PRIMARY CONTROL STATIONS 5 AND 6, HOLDING STATION 6 AND A WEIGHTED OPUS-STATIC POSITION FOR STATION 5. THE RESULTING ERROR SEMI-MAJOR AXIS LENGTHS, AT THE 95% CONFIDENCE LEVEL FOR PRIMARY AND SECONDARY CONTROL POINTS, WERE UNDER 0.03 FEET IN ABSOLUTE ACCURACY. FINAL PROJECT COORDINATES WERE ESTABLISHED BY PROJECTING THE ADJUSTED NETWORK POSITIONS TO THE OCRS - COTTAGE GROVE CANYONVILLE ZONE, REPRESENTING APPROXIMATE GROUND DISTANCES. ALL OBSERVATIONS WERE MADE IN DECEMBER 2020, UTILIZING LEICA MS50 TOTAL STATION AND LEICA GS14 GNSS RECEIVERS WITH CS15 DATA COLLECTOR.

NETWORK POINTS SET DURING THIS SURVEY DO NOT REPRESENT PROPERTY LINES OR RIGHT OF WAY LINES. THEY ARE INTENDED TO PERPETUATE THE ALIGNMENTS AND RIGHT OF WAY DEVELOPED FOR THIS PROJECT IN CONFORMANCE WITH ORS CHAPTER 209 SECTION 155.

ELEVATIONS WERE ESTABLISHED BY HOLDING THE OPUS-DERIVED ELEVATION OF CONTROL POINT 6 WITH CHECKS TO CONTROL POINT 5. A CLOSED DIFFERENTIAL LEVEL LOOP WAS RUN FROM CONTROL POINT 6 TO CONTROL POINT 5 AND WAS ADJUSTED FOR FINAL ELEVATIONS.

MONUMENTS:

HORIZONTAL POSITIONS OF THE FOUND MONUMENTS WERE OBTAINED USING TWO METHODS: REAL-TIME KINEMATIC (RTK) GPS MEASUREMENTS AND TERRESTRIAL OBSERVATIONS FROM HORIZONTAL CONTROL WHERE RTK WAS NOT FEASIBLE. MONUMENTS WERE OBSERVED TWICE, WITH A MINIMUM OF FORTY-FIVE MINUTES BETWEEN RTK OBSERVATIONS, AND THEN MEANING THE VALUES.

NETWORK POINTS SET DURING THIS SURVEY DO NOT REPRESENT PROPERTY LINES OR RIGHT-OF-WAY LINES. THEY ARE INTENDED TO PERPETUATE THE ALIGNMENTS AND RIGHT-OF-WAY DEVELOPED FOR THIS PROJECT IN CONFORMANCE WITH ORS CHAPTER 209 SECTION 155.

PORTLAND AVENUE RESOLUTION:

PORTLAND AVENUE WAS ESTABLISHED FROM THE PLAT OF UMPQUA PARK COMPRISING OF UMPQUA PARK FRUIT LANDS AND UMPQUA PARK ADDITION TO ROSEBURG, BEING FIFTY FEET IN WIDTH. NO MONUMENTS WERE FOUND IN THE CENTERLINE OR ON THE SOUTH SIDE OF PORTLAND AVENUE, THEREFORE THE MONUMENTS ON THE NORTH SIDE WERE HELD TO DETERMINE THE NORTH RIGHT OF WAY. I HELD THE PARTITION PLAT M87-27 TO ESTABLISH THE NORTH RIGHT OF WAY OF PORTLAND AVENUE USING MONUMENTS 2055, 2056, 2057, 2058, 2054, AND 2073, PROJECTING THE SAID RIGHT-OF-WAY LINE EAST TO INTERSECT THE CALCULATED LOCATION OF RIVER STREET AND OFFSET THE SAID RIGHT-OF-WAY LINE 25.00 FEET TO THE SOUTH TO REESTABLISH THE CENTERLINE OF PORTLAND AVENUE. MONUMENT 2058 APPEARS TO BE SET FROM SURVEY M40-7 BUT DOES NOT STATE ANY MONUMENTS BEING SET BUT WAS HELD IN SURVEYS M87-27, M82-5, AND M80-67. MONUMENTS 2056 AND 2057 WERE HELD FOR THE CENTERLINE OF VACATED HARTONG STREET (VACATION NUMBER 70-7668). MONUMENTS 2054 AND 2074 WERE HELD TO ESTABLISH THE WEST RIGHT OF WAY LINE OF KENDALL STREET. NO RECORDS WERE FOUND FOR MONUMENTS 2071 AND 2072 BEING SET, BUT ARE SHOWN IN SURVEYS M80-67, M82-5, AND M87-27 AND WERE NOT HELD FOR THIS SURVEY.

ALL NORTH-SOUTH STREETS WERE PLATTED AS "AVENUES" AND PORTLAND WAS PLATTED AS A "STREET" PER THE PLAT OF UMPQUA PARK. FOR THIS SURVEY ALL NORTH-SOUTH STREETS WERE HELD AS "STREETS" AND PORTLAND WAS HELD AS "AVENUE" PER THE ASSESSOR'S MAPS AND CS37-099.

SURVEY REFERENCES:

DOUGLAS COUNTY SURVEY RECORDS:

ST. HWY 15-006A
ST. HWY. 15-006F
M7-62
M40-7
RM2-18
CS37-099

DOUGLAS COUNTY PLATS:

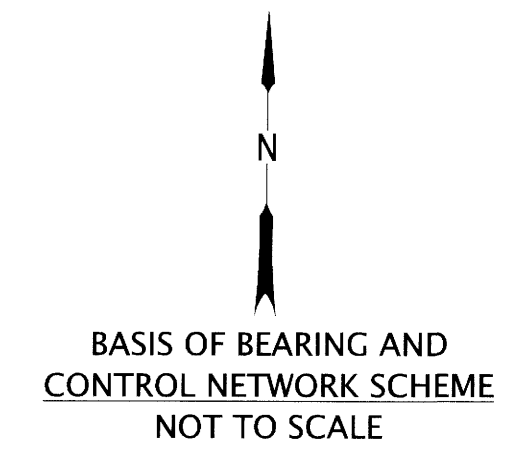
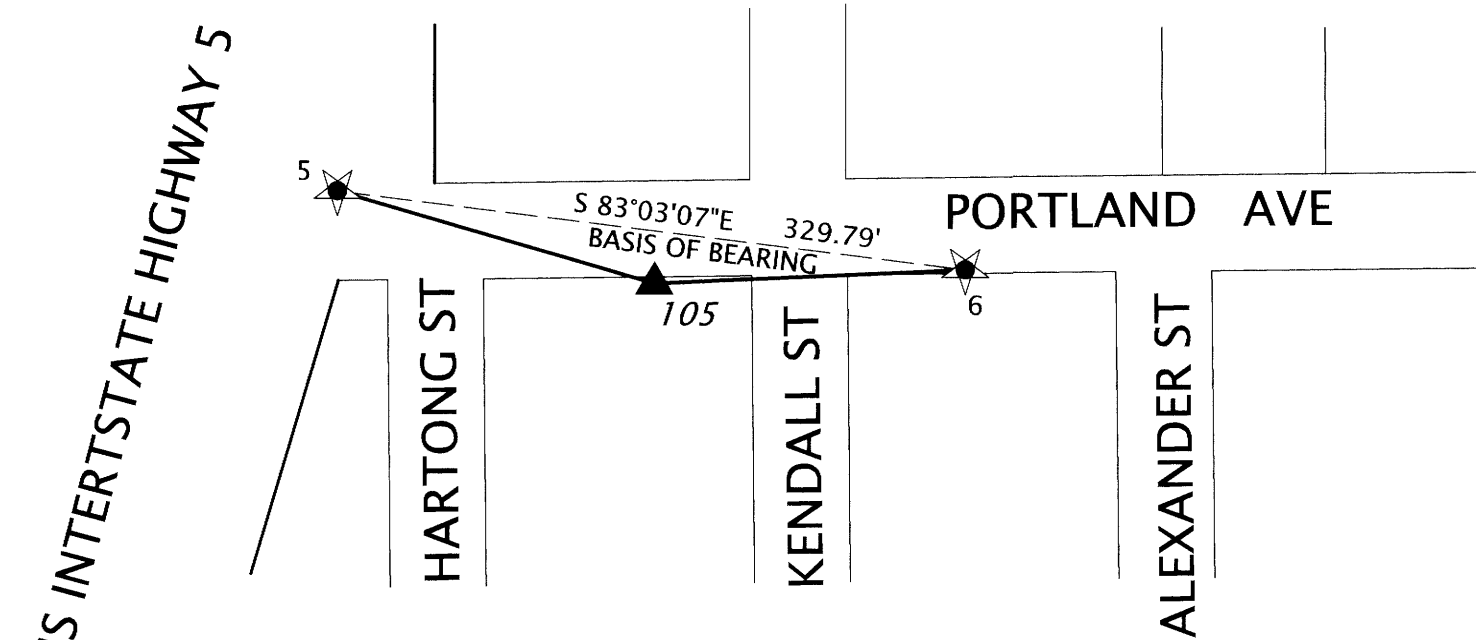
UMPQUA PARK, VOL. 3, PG. 1
M80-67
M82-5
M87-27

ODOT DRAWINGS:

7B-7-11
9B-6-16

DEEDS:

2002-2255
2002-2367
2002-1747
2001-26542
1990-17644
1970-1171
280477
325564



LEGEND	
	SET NETWORK POINT
	LINES OF OBSERVATION
	SET GPS POINT
	GNSS OBSERVATION
BD	BRASS DISK

GPS COORDINATE TABLE

PT. NO.	OCRS NORTHING	OCRS EASTING	STATION	OFFSET	DATE	DESCRIPTION
5	133228.307	157271.458	1+04.92	21.28 L	12/09/2021	SET 1-1/8" BD "DEA CONTROL", FLUSH IN CONCRETE
6	133188.412	157598.824	4+31.69	23.21 R	12/09/2021	SET 1-1/8" BD "DEA CONTROL", FLUSH IN CONCRETE
105	133180.879	157436.611	2+69.39	28.47 R	08/30/2021	SET 1-1/8" BD "DEA CONTROL", FLUSH IN CONCRETE

SHEET INDEX:

- SHEET 1: NARRATIVE, REFERENCE DOCUMENTS
GPS NETWORK, NETWORK POINT LIST AND LEGEND
- SHEET 2: RECOVERED MONUMENT LIST, PROJECT RECOVERY AND LEGEND

DAVID EVANS AND ASSOCIATES INC.
2100 S River Parkway, Suite 100
Portland Oregon 97201
Phone: 503.223.6663

REGISTERED PROFESSIONAL LAND SURVEYOR

OREGON
JANUARY 10, 2006
ROBERT R. JACKSON
47721
RENEWS: 6/30/2023

FILE NAME: S_K22388_CRR_PORTLAND AVENUE-SHTS 1-2.DGN

OREGON DEPARTMENT OF TRANSPORTATION
HORIZONTAL CONTROL, RECOVERY AND RETRACEMENT MAP
REGION 3 DISTRICT 7
DOUGLAS COUNTY ADA RAMP
MILEPOSTS 121.27 TO 126.60
PORTLAND AVENUE, ROSEBURG
DOUGLAS COUNTY, OREGON

ODOT REGION 3 HEAD QUARTERS
3500 NW STEWART PARKWAY
ROSEBURG, OREGON KEY NO. 22388

DECEMBER 15, 2021
SCALE: N/A
SHEET 1 OF 2