

SW 1/4 SEC 1 T27S R6W WM  
CITY OF ROSEBURG, DOUGLAS COUNTY, OREGON

NOTE: ALL CENTER LINE STATIONS AND DATA ARE PER RECORD INFORMATION ACCORDING TO ODOT DRAWING NO. 1A-22-9 AND STATE HIGHWAY MAP Q8, EXCEPT FOR THE BEARINGS AND COORDINATES AS SHOWN HEREON WHICH HAVE BEEN CALCULATED BASED UPON THE OCRS ZONE STATED. RECORD INFORMATION IS SHOWN WITH ( ) PER THE LEGEND.

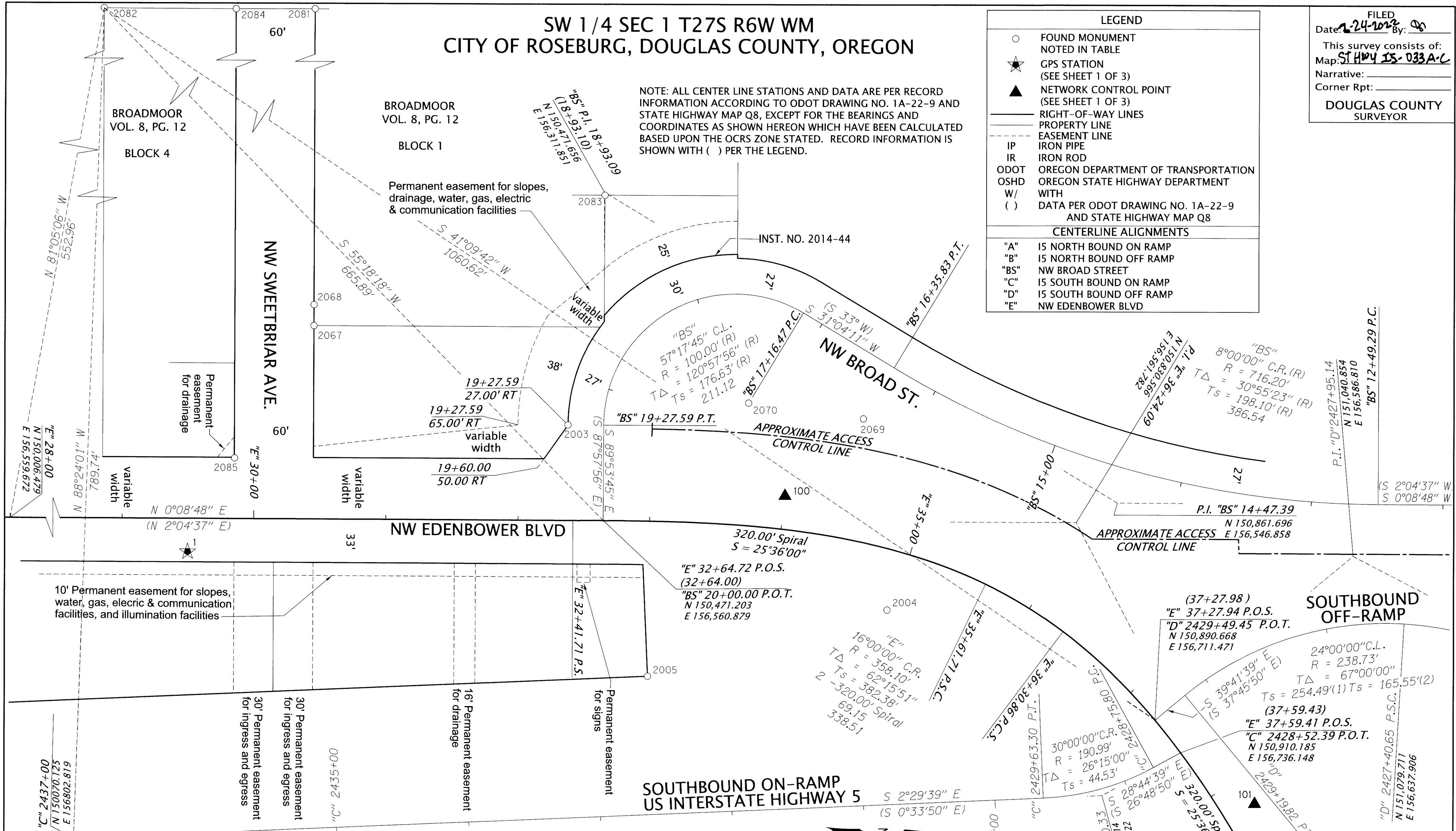
**LEGEND**

- FOUND MONUMENT NOTED IN TABLE
- ★ GPS STATION (SEE SHEET 1 OF 3)
- ▲ NETWORK CONTROL POINT (SEE SHEET 1 OF 3)
- RIGHT-OF-WAY LINES
- - - PROPERTY LINE
- - - EASEMENT LINE
- IP IRON PIPE
- IR IRON ROD
- ODOT OREGON DEPARTMENT OF TRANSPORTATION
- OSHD OREGON STATE HIGHWAY DEPARTMENT
- W/ WITH
- ( ) DATA PER ODOT DRAWING NO. 1A-22-9 AND STATE HIGHWAY MAP Q8

**CENTERLINE ALIGNMENTS**

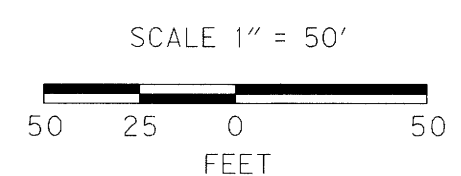
- "A" 15 NORTH BOUND ON RAMP
- "B" 15 NORTH BOUND OFF RAMP
- "BS" NW BROAD STREET
- "C" 15 SOUTH BOUND ON RAMP
- "D" 15 SOUTH BOUND OFF RAMP
- "E" NW EDENBOWER BLVD

FILED  
Date: 12-24-2021 By: [Signature]  
This survey consists of:  
Map: ST HWY 15-033A-C  
Narrative:  
Corner Rpt:  
DOUGLAS COUNTY SURVEYOR



**RECOVERED MONUMENT LIST**

PT. NO.	OCRS NORTHING	OCRS EASTING	STATION	OFFSET	DATE	DESCRIPTION	SOURCE
2003	150444.34	156488.43	"BS" 19+27.59	27.00' RT	11/21/2020	5/8" IR W/ 2" ALUMINUM DISC "ODOT RIGHT OF WAY"	STATE HWY. MAP Q8
2004	150686.99	156628.37	"E" 34+95.16	45.17' RT	11/21/2020	2" ALUMINUM DISC "OREG STATE HWY DIV"	STATE HWY. MAP Q8
2005	150505.15	156678.87	"C" 2432+60.00	104.90' RT	11/21/2020	2" ALUMINUM DISC "ODOT RIGHT OF WAY"	STATE HWY. MAP Q8
2067	150251.72	156413.70	"E" 30+44.86	146.60' LT	12/17/2020	5/8" IR, 0.1' UP	M54-64
2068	150251.75	156397.79	"E" 30+44.85	162.51' LT	12/17/2020	5/8" IR, 0.3' DOWN	M103-69
2069	150668.74	156483.29	"BS" 16+35.81	45.13' LT	12/17/2020	5/8" IR W/ 1-1/2" ALUMINUM CAP "ODOT RIGHT OF WAY", 0.2' DOWN	STATE HWY. MAP Q8
2070	150581.45	156471.50	"BS" 17+17.43	80.08' LT	12/17/2020	5/8" IR W/ 1-1/2" ALUMINUM CAP "ODOT RIGHT OF WAY", 0.1' DOWN	STATE HWY. MAP Q8
2081	150252.28	156013.67	"E" 30+44.40	546.63' LT	1/18/2021	1-1/4" IP, SPLIT AND MUSHROOMED, 0.1' DWN	VOL. 8, PG. 12
2082	150092.17	156013.39	"E" 28+84.30	546.50' LT	1/18/2021	2-1/2" IP, FLUSH	VOL. 8, PG. 12
2083	150471.96	156314.14	"BS" 18+22.46	100.83' RT	1/19/2021	5/8" IR, BENT, 0.9' UP, TIED AT BEND	M103-69
2084	150192.41	156013.72	"E" 29+84.53	546.43' LT	1/19/2021	1-1/4" IP, BENT, 0.5' UP, TIED AT BEND	VOL. 8, PG. 12
2085	150191.79	156514.17	"E" 29+85.19	45.97' LT	1/19/2021	1" IP, BENT, 0.6' DOWN, TIED AT BEND	VOL. 8, PG. 12



**DAVID EVANS AND ASSOCIATES INC.**  
2100 S River Parkway, Suite 100  
Portland Oregon 97201  
Phone: 503.223.6663

REGISTERED PROFESSIONAL LAND SURVEYOR  
[Signature]  
OREGON  
JANUARY 10, 2006  
ROBERT R. JACKSON  
47721  
RENEWS: 6/30/2023

**OREGON DEPARTMENT OF TRANSPORTATION**  
HORIZONTAL CONTROL, RECOVERY AND RETRACEMENT MAP  
REGION 3 DISTRICT 7  
DOUGLAS COUNTY ADA RAMPS  
MILEPOSTS 126.39 TO 126.60  
CITY OF ROSEBURG  
DOUGLAS COUNTY, OREGON

ODOT REGION 3 HEAD QUARTERS  
3500 NW STEWART PARKWAY  
ROSEBURG, OREGON 97470 KEY NO. 22388

DECEMBER 15, 2021  
SCALE: 1" = 50'  
SHEET 3 OF 3