

SW 1/4 SEC 1 T27S R6W WM  
CITY OF ROSEBURG, DOUGLAS COUNTY, OREGON

FILED  
Date: 2-14-2022 By: DAE  
This survey consists of:  
Map: ST. HWY 15-033A-C  
Narrative:  
Corner Rpt:  
DOUGLAS COUNTY SURVEYOR

NOTE: ALL CENTER LINE STATIONS AND DATA ARE PER RECORD INFORMATION ACCORDING TO ODOT DRAWING NO. 1A-22-9 AND STATE HIGHWAY MAP Q8, EXCEPT FOR THE BEARINGS AND COORDINATES AS SHOWN HEREON WHICH HAVE BEEN CALCULATED BASED UPON THE OCRS ZONE STATED. RECORD INFORMATION IS SHOWN WITH ( ) PER THE LEGEND.

LEGEND	
○	FOUND MONUMENT NOTED IN TABLE THIS SHEET
★	GPS STATION (SEE SHEET 1 OF 3)
▲	NETWORK CONTROL POINT (SEE SHEET 1 OF 3)
—	RIGHT-OF-WAY LINES
—	PROPERTY LINE
---	EASEMENT LINE
IR	IRON ROD
ODOT	OREGON DEPARTMENT OF TRANSPORTATION
OSHD	OREGON STATE HIGHWAY DEPARTMENT
W/	WITH
( )	DATA PER ODOT DRAWING NO. 1A-22-9 AND STATE HIGHWAY MAP Q8
CENTERLINE ALIGNMENTS	
"A"	15 NORTH BOUND ON RAMP
"B"	15 NORTH BOUND OFF RAMP
"BS"	NW BROAD STREET
"C"	15 SOUTH BOUND ON RAMP
"D"	15 SOUTH BOUND OFF RAMP
"E"	NW EDENBOWER BLVD

REFERENCES:

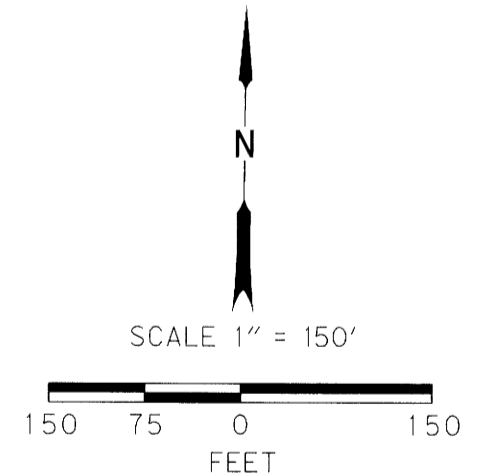
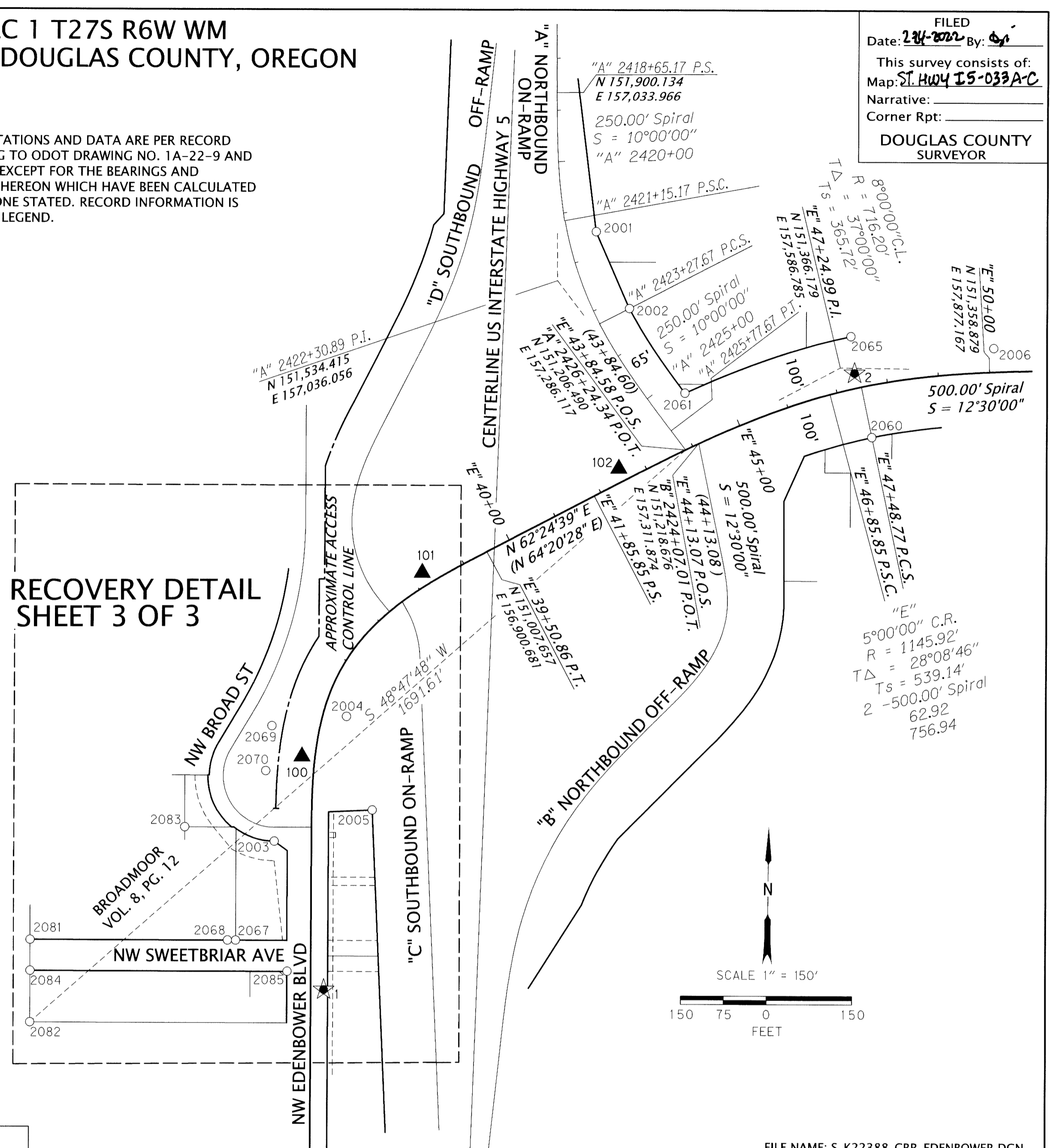
ODOT RIGHT OF WAY MAPS 1A-22-9	DOUGLAS COUNTY SUBDIVISION PLATS AIRPORT WEST BROADMOOR EDENBOWER ORCHARD TRACTS GREEN ACRES
DOUGLAS COUNTY STATE HIGHWAY MAPS Q8	
DOUGLAS COUNTY SURVEYS CS 51/338 CS 55/82-3 CS 58/133-3 M 36-24 M 50-15 M 54-64 M 59-12 M 59-22 M 69-5 M 78-63 M 97-36 M 103-69 M 106-7 M 118-75 M 120-73 M 130-23 M 158-55	DOUGLAS COUNTY PARTITION PLATS PP 1991-0022 PP 1996-0060 PP 1998-0123 PP 2006-0057  DOUGLAS COUNTY RECORDS 1986-17844 1993-02239 1993-04982 1993-11207 1997-22029 2003-18274 2010-00093 2010-20090 2014-00044 2014-03853 2017-09810

RECOVERED MONUMENT LIST

PT. NO.	OCRS NORTHING	OCRS EASTING	STATION	OFFSET	DATE	DESCRIPTION	SOURCE
2001	151629.43	157110.80	"A" 2421+49.99	55.27' LT	11/21/2020	5/8" IR W/ 2" ALUMINUM DISC, "ODOT RIGHT OF WAY"	STATE HWY. MAP Q8
2002	151480.44	157176.07	"A" 2423+27.70	65.09' LT	11/21/2020	5/8" IR W/ 2" ALUMINUM DISC, "ODOT RIGHT OF WAY"	STATE HWY. MAP Q8
2006	151405.31	157885.24	"E" 50+09.93	46.05' LT	11/21/2020	5/8" IR W/ 1-1/4" ALUMINUM DISC, ILLEGIBLE	STATE HWY. MAP Q8
2060	151231.72	157648.52	"E" 47+48.65	99.96' RT	12/15/2020	5/8" IR, 0.1' DOWN	STATE HWY. MAP Q8
2061	151316.52	157284.38	"E" 44+28.87	100.34' LT	12/15/2020	5/8" IR W/ 1-1/2" ALUMINUM CAP, "ODOT RIGHT OF WAY", 0.2' DOWN	STATE HWY. MAP Q8
2065	151427.34	157607.21	"E" 47+48.73	99.97' LT	12/16/2020	5/8" IR, FLUSH	STATE HWY. MAP Q8

SEE SHEET 3 OF 3 FOR LIST OF RECOVERED MONUMENTS LOCATED WITHIN THE DETAIL AREA.

SEE RECOVERY DETAIL SHEET 3 OF 3



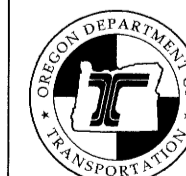
FILE NAME: S\_K22388\_CRR\_EDENBOWER.DGN

**DAVID EVANS AND ASSOCIATES INC.**  
2100 S River Parkway, Suite 100  
Portland Oregon 97201  
Phone: 503.223.6663

REGISTERED PROFESSIONAL LAND SURVEYOR

OREGON  
JANUARY 10, 2006  
ROBERT R. JACKSON  
47721  
RENEWS: 6/30/2023

**OREGON DEPARTMENT OF TRANSPORTATION**  
HORIZONTAL CONTROL, RECOVERY AND RETRACEMENT MAP  
REGION 3 DISTRICT 7  
DOUGLAS COUNTY ADA RAMP  
MILEPOSTS 126.39 TO 126.60  
CITY OF ROSEBURG  
DOUGLAS COUNTY, OREGON



ODOT REGION 3 HEAD QUARTERS  
3500 NW STEWART PARKWAY  
ROSEBURG, OREGON 97470 KEY NO. 22388

DECEMBER 15, 2021  
SCALE: 1" = 150'  
SHEET 2 OF 3

ST. HWY. 15-033 B