

**SW 1/4 SEC 1 T27S R6W WM
CITY OF ROSEBURG, DOUGLAS COUNTY, OREGON**

FILED
Date: 2-24-2022 By: QJ
This survey consists of:
Map: ST HWY 15-033 A-C
Narrative: _____
Corner Rpt: _____
**DOUGLAS COUNTY
SURVEYOR**

NARRATIVE:

PURPOSE OF THE SURVEY:

THE PURPOSE OF THIS SURVEY IS TO ESTABLISH HORIZONTAL CONTROL, RECOVER AND PERPETUATE EXISTING MONUMENTS AND TO RETRACE THE LOCATION OF THE EXISTING RIGHT OF WAY CENTER LINE OF NW EDENBOWER BOULEVARD, NW BROAD STREET, THE SOUTHBOUND ON RAMP TO INTERSTATE HIGHWAY 5 AND THE NORTHBOUND ON RAMP TO SAID INTERSTATE HIGHWAY 5, FOR THE PROPOSED OREGON DEPARTMENT OF TRANSPORTATION (ODOT) DOUGLAS AND COOS COUNTY ADA CURB RAMP PROJECT, KEY NUMBER 22388. THIS SURVEY MEETS THE REQUIREMENTS OF ORS 209.155. ADJOINING BOUNDARY LINES HAVE NOT BEEN RESOLVED IN THIS SURVEY BUT ARE SHOWN PER EXISTING SURVEYS OR OTHER AVAILABLE INFORMATION. THE FIELD WORK WAS CONDUCTED BETWEEN NOVEMBER 21, 2020 AND JANUARY 25, 2021.

PROJECT CONTROL:

THE BASIS OF BEARINGS AND COORDINATES FOR THIS SURVEY IS THE OREGON COORDINATE REFERENCE SYSTEM (OCRS) - COTTAGE GROVE-CANYONVILLE ZONE. THE OCRS NORTHING AND EASTING PROJECTION PARAMETERS ARE REFERENCED IN O.A.R. 734-005-0015. HORIZONTAL DATUM IS NAD 83 (2011) EPOCH 2010.00. VERTICAL DATUM IS NAVD88. ALL LINEAR VALUES ARE EXPRESSED IN INTERNATIONAL FEET.

PRIMARY CONTROL CONSISTS OF TWO PRIMARY PROJECT CONTROL STATIONS AND THREE SECONDARY CONTROL STATIONS. TWO-HOUR STATIC SESSIONS WERE OBSERVED AT PROJECT CONTROL STATIONS 1 AND 2. ALL PROJECT CONTROL STATION POSITIONS WERE ESTABLISHED USING A COMBINATION OF GLOBAL NAVIGATION SATELLITE SYSTEM (GNSS) OBSERVATIONS, TERRESTRIAL TOTAL STATION MEASUREMENTS, AND DIGITAL LEVEL OBSERVATIONS.

GNSS BASELINE VECTORS, TOGETHER WITH TERRESTRIAL OBSERVATIONS, WERE ADJUSTED USING LEAST SQUARES ANALYSIS (STARNET V9.0). THE NETWORK WAS CONSTRAINED USING VALUES FROM ONLINE POSITIONING USER SERVICE (OPUS) STATIC SOLUTIONS FOR PRIMARY CONTROL STATIONS 1 AND 2, HOLDING STATION 1 AND A WEIGHTED OPUS-STATIC POSITION FOR STATION 2. THE RESULTING ERROR SEMI-MAJOR AXIS LENGTHS, AT THE 95% CONFIDENCE LEVEL FOR PRIMARY AND SECONDARY CONTROL POINTS, WERE UNDER 0.03 FEET IN ABSOLUTE ACCURACY. FINAL PROJECT COORDINATES WERE ESTABLISHED BY PROJECTING THE ADJUSTED NETWORK POSITIONS TO THE OCRS - COTTAGE GROVE-CANYONVILLE ZONE, REPRESENTING APPROXIMATE GROUND DISTANCES. ALL OBSERVATIONS WERE MADE IN JANUARY 2021, UTILIZING LEICA TS15 TOTAL STATION AND LEICA GS14 GNSS RECEIVERS WITH CS15 DATA COLLECTOR.

NETWORK POINTS SET DURING THIS SURVEY DO NOT REPRESENT PROPERTY LINES OR R/W LINES. THEY ARE INTENDED TO PERPETUATE THE ALIGNMENTS AND RIGHT-OF-WAY DEVELOPED FOR THIS PROJECT IN CONFORMANCE WITH ORS CHAPTER 209 SECTION 155.

MONUMENTS:

HORIZONTAL POSITIONS OF THE FOUND MONUMENTS WERE OBTAINED USING TWO METHODS: REAL-TIME KINEMATIC (RTK) GPS MEASUREMENTS AND TERRESTRIAL OBSERVATIONS FROM HORIZONTAL CONTROL WHERE RTK WAS NOT FEASIBLE. MONUMENTS WERE OBSERVED TWICE, WITH A MINIMUM OF FORTY-FIVE MINUTES BETWEEN RTK OBSERVATIONS, AND THEN MEANING THE VALUES. TERRESTRIAL OBSERVATION METHODS FOLLOWED ODOT PROCEDURES WITH TWO OBSERVATIONS.

CENTER LINE AND RIGHT OF WAY LINE RESOLUTION FOR NW EDENBOWER BOULEVARD, NW BROAD STREET, THE SOUTHBOUND ON RAMP TO INTERSTATE HIGHWAY 5 AND THE NORTHBOUND ON RAMP TO SAID INTERSTATE HIGHWAY 5:

A BEST FIT RESOLUTION WAS UTILIZED DUE TO THE FACT THAT MOST OF THE RIGHT OF WAY MONUMENTATION FOUND DID NOT FIT THE RECORD DATA VERY CLOSELY. THE BEST FIT RESOLUTION THAT WAS SELECTED YIELDED RESULTS THAT MINIMIZED THE RESIDUAL DIFFERENCES BETWEEN MEASURED POSITIONS AND RECORD INFORMATION WHILE MAINTAINING ALL RECORD GEOMETRY AND ALIGNMENTS.

THE CENTER LINE ALIGNMENTS OF NW EDENBOWER BOULEVARD ("E"LINE), NW BROAD STREET ("BS"LINE), THE SOUTHBOUND ON RAMP TO INTERSTATE HIGHWAY 5 ("C"LINE) AND THE NORTHBOUND ON RAMP TO SAID INTERSTATE HIGHWAY 5 ("A"LINE) WERE CALCULATED FROM RECORD COORDINATE CONTROL, STATIONING AND CURVE DATA ACCORDING TO ODOT DRAWING NO. 1A-22-9, "LOCATED LINE NORTH ROSEBURG INTERCHANGE SEC. AND STATE HWY. MAP Q8, "NORTH ROSEBURG INTERCHANGE SEC. RIGHT OF WAY MONUMENTATION".

THE RIGHT OF WAY AND ACCESS CONTROL LINES WERE CALCULATED FROM RECORD CENTER LINE ALIGNMENT STATION AND OFFSET DATA ACCORDING TO SAID ODOT AND STATE HWY. MAPS.

THE CALCULATED RECORD CENTER LINE ALIGNMENTS AND RIGHT OF WAY/ACCESS CONTROL LINES WERE ROTATED TO MATCH THE BEARING AS ESTABLISHED BETWEEN POINT 2003, A 5/8" IRON ROD WITH 2"ALUMINUM CAP MARKED "ODOT RIGHT OF WAY", FOUND AT "BS" STATION 19+27.60 PT, 27 FT RIGHT, AND POINT 2065, A 5/8" IRON ROD FOUND AT "E" STATION 47+48.77 PCS, 100 FT LEFT.

NARRATIVE CONTINUED:

THE DISTANCE BETWEEN THESE TWO FOUND RIGHT OF WAY MONUMENTS FIT VERY WELL WITH THE RECORD INFORMATION AND WAS THEREFORE USED AS THE BASIS OF ROTATION TO FIT THE RECORD ALIGNMENT AND BOUNDARY DATA TO THE FOUND MONUMENTATION.

THE REMAINING FOUND RIGHT OF WAY MONUMENTS WERE EVALUATED AND THE FALLING FOR EACH POINT AS COMPARED TO ITS RESPECTIVE RECORD STATION AND OFFSET POSITION IS AS NOTATED BELOW (SEE FOUND MONUMENT TABLE FOR COMPLETE DESCRIPTION):

- POINT 2001 ("A" LINE): FOUND ON STATION AND 0.27 FT LEFT
- POINT 2002 ("A" LINE): FOUND ON STATION AND 0.09 FT LEFT
- POINT 2005 ("C" LINE): FOUND ON STATION AND 0.10 FT LEFT
- POINT 2006 ("E" LINE): FOUND 0.07 FT DOWNSTATION AND 0.05 FT LEFT
- POINT 2060 ("E" LINE): FOUND 0.12 FT DOWNSTATION AND 0.04 FT LEFT
- POINT 2061 ("E" LINE): FOUND ON STATION AND 0.34 FT LEFT

NOTE: ACCORDING TO INFORMATION AS SHOWN ON STATE HWY. MAP Q8, THERE IS A 0.20 FT COORDINATE VALUE DIFFERENCE BETWEEN THE CALCULATED POSITION OF THE ANGLE POINT IN THE ACCESS CONTROL LINE AS DETERMINED BY ALIGNMENT STATION AND OFFSET DATA WHEN COMPARED TO THE POSITION OF WHERE THE R/W MONUMENT WAS ACTUALLY SET ACCORDING TO THE STATION AND COORDINATE DATA AS SPECIFIED IN THE RIGHT OF WAY MONUMENTS TABLE OF SAID MAP.

POINT 2069 ("BS"LINE): FOUND ON STATION AND 0.13 FT LEFT

POINT 2070 ("BS"LINE): FOUND 0.19 FT UPSTATION AND 80.08 FT LEFT OF THE CENTER LINE ALIGNMENT.

NOTE: THE R/W SHEET OF STATE HWY. MAP Q8 DEPICTS A SET R/W MONUMENT SYMBOL OFFSET TO THE LEFT SIDE OF THE CENTER LINE ALIGNMENT AT THIS PARTICULAR PC STATION, BUT THE RIGHT OF WAY MONUMENTS TABLE AS SHOWN ON THE CONTROL SHEET PER SAID MAP LISTS THIS MONUMENT AS BEING SET AT AN OFFSET OF 80 FT RIGHT. THIS IS MOST LIKELY NOT A TYPO DUE TO THE FACT THAT THE COORDINATE VALUES LISTED IN SAID TABLE SUPPORTS THE 80 FT RIGHT OFFSET NOTATION.

RIGHT OF WAY LINE RESOLUTION FOR NW SWEETBRIER AVENUE:

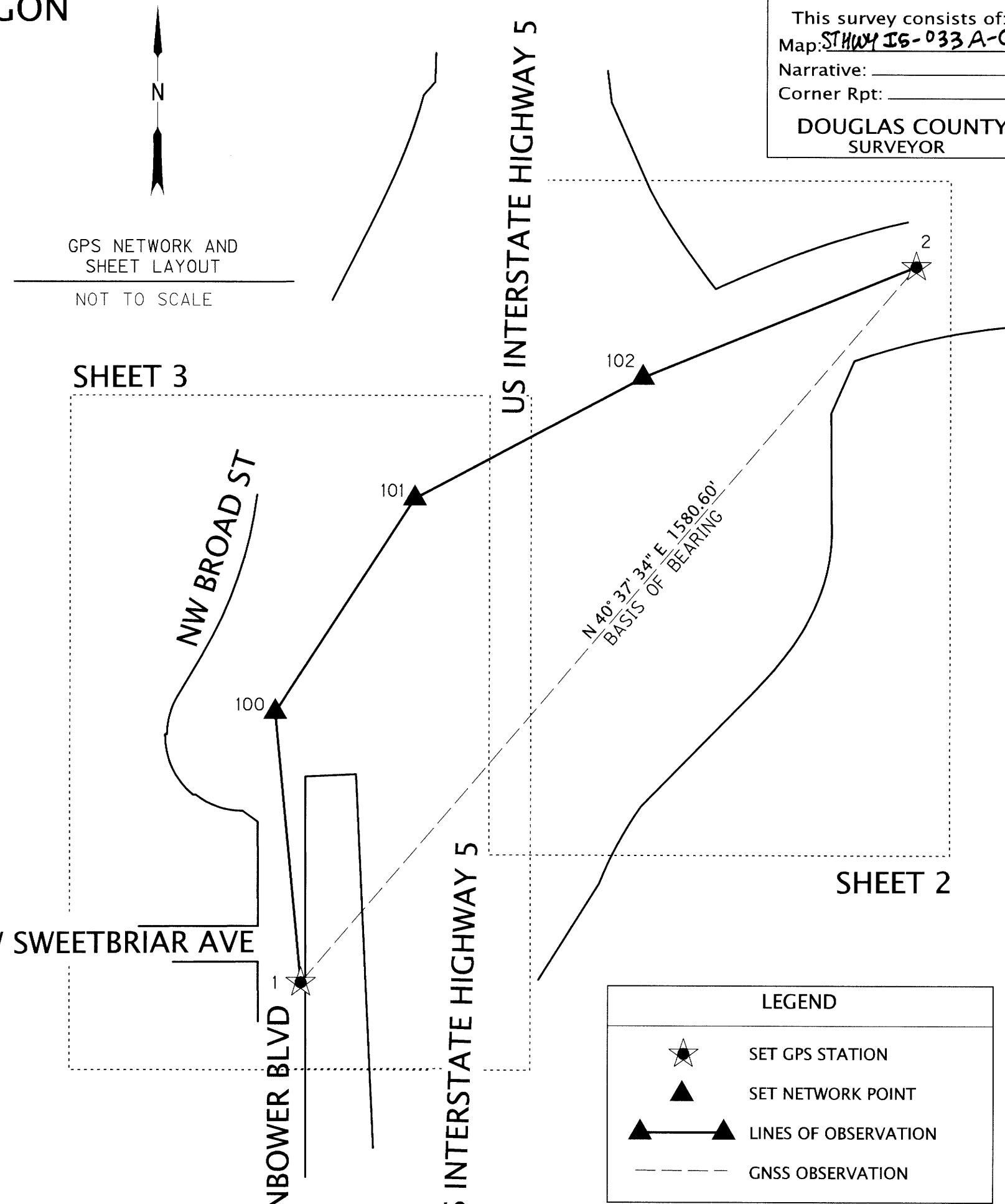
DUE TO THE ABSENCE OF STREET CENTER LINE MONUMENTATION, THE NORTHERLY RIGHT OF WAY LINE OF NW SWEETBRIER AVENUE WAS DETERMINED FROM POINT 2081, A 1-1/4"IRON PIPE FOUND AT THE SOUTHWEST CORNER OF BLOCK 1, "BROADMOOR", TO POINT 2067, A 5/8"IRON ROD FOUND AT THE SOUTHWEST CORNER OF LOT 1, BLOCK 1, "BROADMOOR". THIS LINE WAS THEN EXTENDED EASTERLY 99.97', ACCORDING TO SURVEY M54-64, IN ORDER TO CALCULATE A POSITION FOR THE SOUTHEAST CORNER OF SAID LOT 1, ALSO BEING THE SOUTHEAST CORNER OF SAID BLOCK 1. THE CALCULATED LENGTH OF THE NORTHERLY RIGHT OF WAY LINE OF NW SWEETBRIER AVENUE, ALSO BEING THE SOUTH LINE OF SAID BLOCK 1, "BROADMOOR", FIT THE RECORD PLAT DIMENSION EXACTLY.

RIGHT OF WAY LINE RESOLUTION FOR BROAD STREET (NOW CALLED NW EDENBOWER BOULEVARD):

DUE TO THE ABSENCE OF STREET CENTER LINE MONUMENTATION, THE WESTERLY RIGHT OF WAY LINE OF BROAD STREET WAS RESOLVED BY USING A DEFLECTION ANGLE OF 90°00'30", BETWEEN SWEETBRIER AVENUE AND BROAD STREET, ACCORDING TO SAID "BROADMOOR", AND WAS DETERMINED FROM THE CALCULATED POSITION OF THE SOUTHEAST CORNER OF BLOCK 1, "BROADMOOR", AS PREVIOUSLY STATED, TO A POINT OF INTERSECTION WITH THE SOUTHWESTERLY RIGHT OF WAY LINE OF NW BROAD STREET, TO THE NORTH, AS ESTABLISHED BETWEEN POINT 2003, A 5/8"IRON ROD WITH 2"ALUMINUM CAP MARKED "ODOT RIGHT OF WAY", FOUND AT "BS"STATION 19+27.60 PT, 27 FT RIGHT, AND THE FALSE CALL TO "BS"STATION 19+60, 50 FT RIGHT ACCORDING TO ODOT DRAWING NO. 1A-22-9 AND STATE HWY. MAP Q8.

SHEET INDEX:

- SHEET 1: NARRATIVE, SHEET INDEX, GPS NETWORK, AND CONTROL MONUMENT LIST
- SHEET 2: OVERALL PLAN AND SHEET LAYOUT, REFERENCES, AND RECOVERED MONUMENT LIST
- SHEET 3: PROJECT RECOVERY DETAIL, RECOVERED MONUMENT LIST, AND LEGEND



CONTROL MONUMENT LIST

PT. NO.	OCRS NORTHING	OCRS EASTING	STATION	OFFSET	DATE	DESCRIPTION
1	150156.19	156585.30	"E" 29+49.77	25.24 LT	12/08/2020	SET 1-1/8" BRASS DISC IN CONCRETE CURB "D.E.A. CONTROL"
2	151355.82	157614.46	"E" 47+41.21	28.53 LT	12/10/2020	SET 1-1/8" BRASS DISC IN CONCRETE CURB "D.E.A. CONTROL"
100	150609.20	156541.80	"E" 34+00.10	25.34 LT	12/10/2020	SET 1-1/8" BRASS DISC IN CONCRETE CURB "D.E.A. CONTROL"
101	150966.44	156774.84	"E" 38+21.98	24.92 LT	12/10/2020	SET 1-1/8" BRASS DISC IN CONCRETE CURB "D.E.A. CONTROL"
102	151169.74	157156.47	"E" 42+52.53	25.27 LT	12/10/2020	SET 1-1/8" BRASS DISC IN CONCRETE CURB "D.E.A. CONTROL"

FILE NAME: S_K22388_CRR_EDENBOWER.DGN

**DAVID EVANS
AND ASSOCIATES INC.**
 2100 S River Parkway, Suite 100
 Portland Oregon 97201
 Phone: 503.223.6663

REGISTERED
 PROFESSIONAL
 LAND SURVEYOR

 OREGON
 JANUARY 10, 2006
 ROBERT R. JACKSON
 47721
 RENEWS: 6/30/2023

OREGON DEPARTMENT OF TRANSPORTATION
 HORIZONTAL CONTROL, RECOVERY AND RETRACEMENT MAP
 REGION 3 DISTRICT 7
 DOUGLAS COUNTY ADA RAMP
 MILEPOSTS 126.39 TO 126.60
 CITY OF ROSEBURG
 DOUGLAS COUNTY, OREGON

 ODOT REGION 3 HEAD QUARTERS
 3500 NW STEWART PARKWAY
 ROSEBURG, OREGON 97470 KEY NO. 22388
 DECEMBER 15, 2021
 NOT TO SCALE
 SHEET 1 OF 3

SW 1/4 SEC 1 T27S R6W WM
CITY OF ROSEBURG, DOUGLAS COUNTY, OREGON

FILED
Date: 2-14-2022 By: DAE
This survey consists of:
Map: ST. HWY 15-033A-C
Narrative:
Corner Rpt:
DOUGLAS COUNTY SURVEYOR

NOTE: ALL CENTER LINE STATIONS AND DATA ARE PER RECORD INFORMATION ACCORDING TO ODOT DRAWING NO. 1A-22-9 AND STATE HIGHWAY MAP Q8, EXCEPT FOR THE BEARINGS AND COORDINATES AS SHOWN HEREON WHICH HAVE BEEN CALCULATED BASED UPON THE OCRS ZONE STATED. RECORD INFORMATION IS SHOWN WITH () PER THE LEGEND.

LEGEND	
○	FOUND MONUMENT NOTED IN TABLE THIS SHEET
★	GPS STATION (SEE SHEET 1 OF 3)
▲	NETWORK CONTROL POINT (SEE SHEET 1 OF 3)
—	RIGHT-OF-WAY LINES
—	PROPERTY LINE
---	EASEMENT LINE
IR	IRON ROD
ODOT	OREGON DEPARTMENT OF TRANSPORTATION
OSHD	OREGON STATE HIGHWAY DEPARTMENT
W/	WITH
()	DATA PER ODOT DRAWING NO. 1A-22-9 AND STATE HIGHWAY MAP Q8
CENTERLINE ALIGNMENTS	
"A"	15 NORTH BOUND ON RAMP
"B"	15 NORTH BOUND OFF RAMP
"BS"	NW BROAD STREET
"C"	15 SOUTH BOUND ON RAMP
"D"	15 SOUTH BOUND OFF RAMP
"E"	NW EDENBOWER BLVD

REFERENCES:

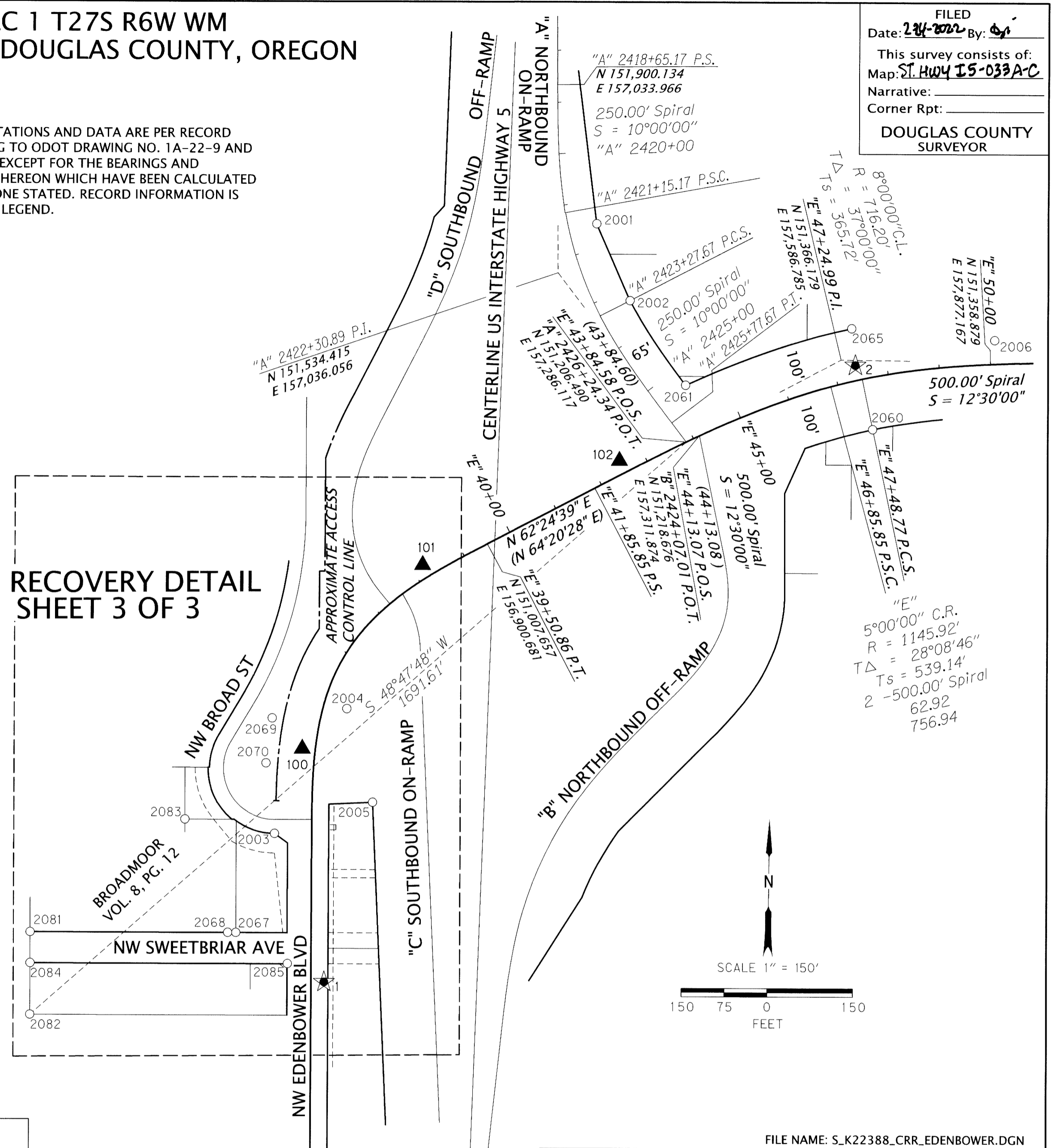
ODOT RIGHT OF WAY MAPS 1A-22-9	DOUGLAS COUNTY SUBDIVISION PLATS AIRPORT WEST BROADMOOR EDENBOWER ORCHARD TRACTS GREEN ACRES
DOUGLAS COUNTY STATE HIGHWAY MAPS Q8	
DOUGLAS COUNTY SURVEYS CS 51/338 CS 55/82-3 CS 58/133-3 M 36-24 M 50-15 M 54-64 M 59-12 M 59-22 M 69-5 M 78-63 M 97-36 M 103-69 M 106-7 M 118-75 M 120-73 M 130-23 M 158-55	DOUGLAS COUNTY PARTITION PLATS PP 1991-0022 PP 1996-0060 PP 1998-0123 PP 2006-0057 DOUGLAS COUNTY RECORDS 1986-17844 1993-02239 1993-04982 1993-11207 1997-22029 2003-18274 2010-00093 2010-20090 2014-00044 2014-03853 2017-09810

RECOVERED MONUMENT LIST

PT. NO.	OCRS NORTHING	OCRS EASTING	STATION	OFFSET	DATE	DESCRIPTION	SOURCE
2001	151629.43	157110.80	"A" 2421+49.99	55.27' LT	11/21/2020	5/8" IR W/ 2" ALUMINUM DISC, "ODOT RIGHT OF WAY"	STATE HWY. MAP Q8
2002	151480.44	157176.07	"A" 2423+27.70	65.09' LT	11/21/2020	5/8" IR W/ 2" ALUMINUM DISC, "ODOT RIGHT OF WAY"	STATE HWY. MAP Q8
2006	151405.31	157885.24	"E" 50+09.93	46.05' LT	11/21/2020	5/8" IR W/ 1-1/4" ALUMINUM DISC, ILLEGIBLE	STATE HWY. MAP Q8
2060	151231.72	157648.52	"E" 47+48.65	99.96' RT	12/15/2020	5/8" IR, 0.1' DOWN	STATE HWY. MAP Q8
2061	151316.52	157284.38	"E" 44+28.87	100.34' LT	12/15/2020	5/8" IR W/ 1-1/2" ALUMINUM CAP, "ODOT RIGHT OF WAY", 0.2' DOWN	STATE HWY. MAP Q8
2065	151427.34	157607.21	"E" 47+48.73	99.97' LT	12/16/2020	5/8" IR, FLUSH	STATE HWY. MAP Q8

SEE SHEET 3 OF 3 FOR LIST OF RECOVERED MONUMENTS LOCATED WITHIN THE DETAIL AREA.

SEE RECOVERY DETAIL SHEET 3 OF 3



DAVID EVANS AND ASSOCIATES INC.
2100 S River Parkway, Suite 100
Portland Oregon 97201
Phone: 503.223.6663

REGISTERED PROFESSIONAL LAND SURVEYOR
Robert R. Jackson
OREGON
JANUARY 10, 2006
ROBERT R. JACKSON
47721
RENEWS: 6/30/2023

FILE NAME: S_K22388_CRR_EDENBOWER.DGN
OREGON DEPARTMENT OF TRANSPORTATION
HORIZONTAL CONTROL, RECOVERY AND RETRACEMENT MAP
REGION 3 DISTRICT 7
DOUGLAS COUNTY ADA RAMP
MILEPOSTS 126.39 TO 126.60
CITY OF ROSEBURG
DOUGLAS COUNTY, OREGON
ODOT REGION 3 HEAD QUARTERS
3500 NW STEWART PARKWAY
ROSEBURG, OREGON 97470 KEY NO. 22388
DECEMBER 15, 2021
SCALE: 1" = 150'
SHEET 2 OF 3

SW 1/4 SEC 1 T27S R6W WM
CITY OF ROSEBURG, DOUGLAS COUNTY, OREGON

NOTE: ALL CENTER LINE STATIONS AND DATA ARE PER RECORD INFORMATION ACCORDING TO ODOT DRAWING NO. 1A-22-9 AND STATE HIGHWAY MAP Q8, EXCEPT FOR THE BEARINGS AND COORDINATES AS SHOWN HEREON WHICH HAVE BEEN CALCULATED BASED UPON THE OCRS ZONE STATED. RECORD INFORMATION IS SHOWN WITH () PER THE LEGEND.

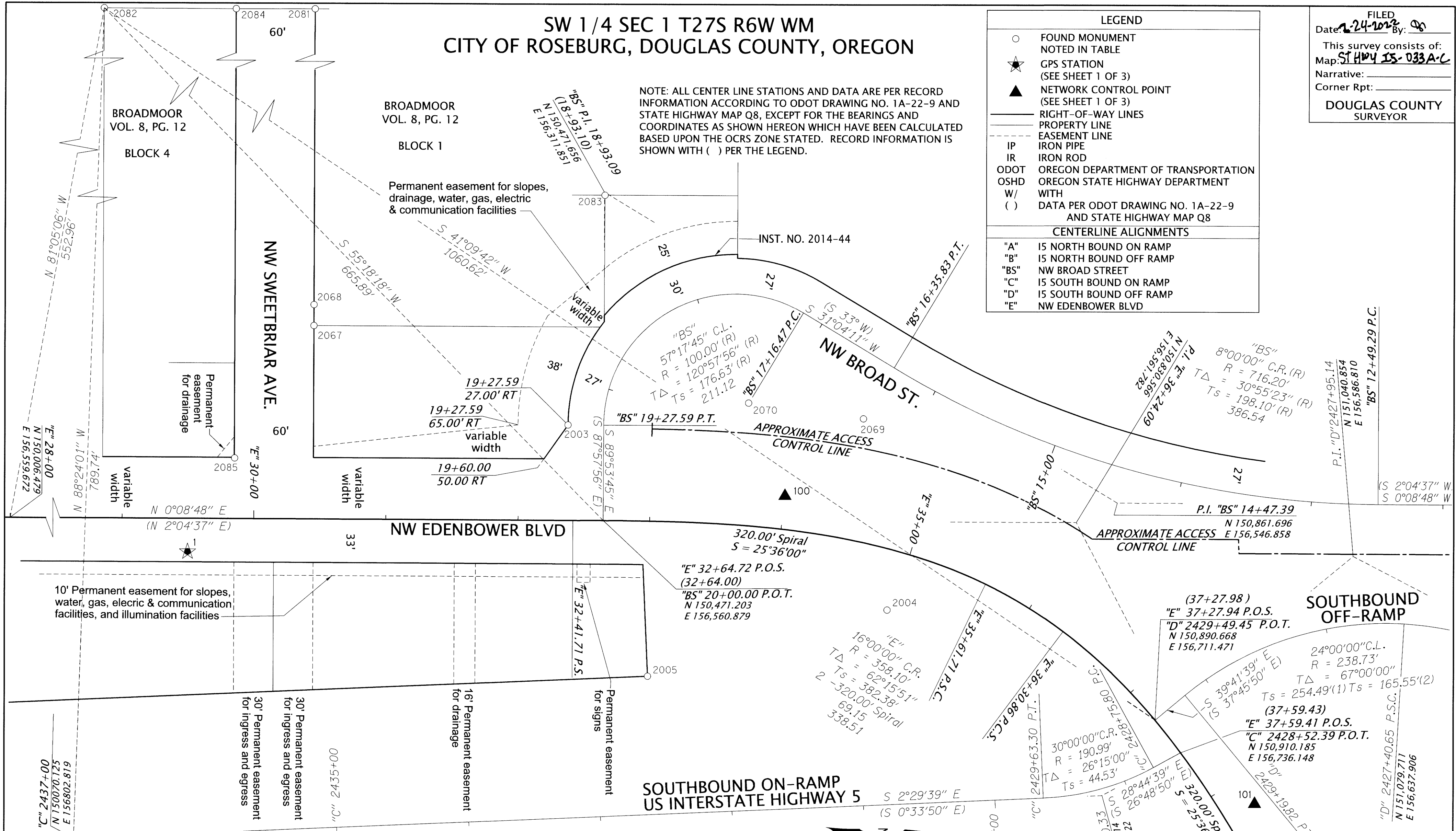
LEGEND

- FOUND MONUMENT NOTED IN TABLE
- ★ GPS STATION (SEE SHEET 1 OF 3)
- ▲ NETWORK CONTROL POINT (SEE SHEET 1 OF 3)
- RIGHT-OF-WAY LINES
- - - PROPERTY LINE
- - - EASEMENT LINE
- IP IRON PIPE
- IR IRON ROD
- ODOT OREGON DEPARTMENT OF TRANSPORTATION
- OSHD OREGON STATE HIGHWAY DEPARTMENT
- W/ WITH
- () DATA PER ODOT DRAWING NO. 1A-22-9 AND STATE HIGHWAY MAP Q8

CENTERLINE ALIGNMENTS

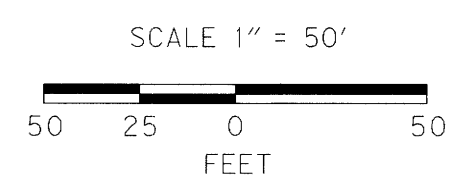
- "A" 15 NORTH BOUND ON RAMP
- "B" 15 NORTH BOUND OFF RAMP
- "BS" NW BROAD STREET
- "C" 15 SOUTH BOUND ON RAMP
- "D" 15 SOUTH BOUND OFF RAMP
- "E" NW EDENBOWER BLVD

FILED
Date: 12-24-2021 By: [Signature]
This survey consists of:
Map: ST HWY 15-033A-C
Narrative:
Corner Rpt:
DOUGLAS COUNTY SURVEYOR



RECOVERED MONUMENT LIST

PT. NO.	OCRS NORTHING	OCRS EASTING	STATION	OFFSET	DATE	DESCRIPTION	SOURCE
2003	150444.34	156488.43	"BS" 19+27.59	27.00' RT	11/21/2020	5/8" IR W/ 2" ALUMINUM DISC "ODOT RIGHT OF WAY"	STATE HWY. MAP Q8
2004	150686.99	156628.37	"E" 34+95.16	45.17' RT	11/21/2020	2" ALUMINUM DISC "OREG STATE HWY DIV"	STATE HWY. MAP Q8
2005	150505.15	156678.87	"C" 2432+60.00	104.90' RT	11/21/2020	2" ALUMINUM DISC "ODOT RIGHT OF WAY"	STATE HWY. MAP Q8
2067	150251.72	156413.70	"E" 30+44.86	146.60' LT	12/17/2020	5/8" IR, 0.1' UP	M54-64
2068	150251.75	156397.79	"E" 30+44.85	162.51' LT	12/17/2020	5/8" IR, 0.3' DOWN	M103-69
2069	150668.74	156483.29	"BS" 16+35.81	45.13' LT	12/17/2020	5/8" IR W/ 1-1/2" ALUMINUM CAP "ODOT RIGHT OF WAY", 0.2' DOWN	STATE HWY. MAP Q8
2070	150581.45	156471.50	"BS" 17+17.43	80.08' LT	12/17/2020	5/8" IR W/ 1-1/2" ALUMINUM CAP "ODOT RIGHT OF WAY", 0.1' DOWN	STATE HWY. MAP Q8
2081	150252.28	156013.67	"E" 30+44.40	546.63' LT	1/18/2021	1-1/4" IP, SPLIT AND MUSHROOMED, 0.1' DWN	VOL. 8, PG. 12
2082	150092.17	156013.39	"E" 28+84.30	546.50' LT	1/18/2021	2-1/2" IP, FLUSH	VOL. 8, PG. 12
2083	150471.96	156314.14	"BS" 18+22.46	100.83' RT	1/19/2021	5/8" IR, BENT, 0.9' UP, TIED AT BEND	M103-69
2084	150192.41	156013.72	"E" 29+84.53	546.43' LT	1/19/2021	1-1/4" IP, BENT, 0.5' UP, TIED AT BEND	VOL. 8, PG. 12
2085	150191.79	156514.17	"E" 29+85.19	45.97' LT	1/19/2021	1" IP, BENT, 0.6' DOWN, TIED AT BEND	VOL. 8, PG. 12



DAVID EVANS AND ASSOCIATES INC.
2100 S River Parkway, Suite 100
Portland Oregon 97201
Phone: 503.223.6663

REGISTERED PROFESSIONAL LAND SURVEYOR
[Signature]
OREGON
JANUARY 10, 2006
ROBERT R. JACKSON
47721
RENEWS: 6/30/2023

OREGON DEPARTMENT OF TRANSPORTATION
HORIZONTAL CONTROL, RECOVERY AND RETRACEMENT MAP
REGION 3 DISTRICT 7
DOUGLAS COUNTY ADA RAMP
MILEPOSTS 126.39 TO 126.60
CITY OF ROSEBURG
DOUGLAS COUNTY, OREGON

ODOT REGION 3 HEAD QUARTERS
3500 NW STEWART PARKWAY
ROSEBURG, OREGON 97470 KEY NO. 22388

DECEMBER 15, 2021
SCALE: 1"=50'
SHEET 3 OF 3

SEE SHEET 2 OF 3 FOR ALIGNMENT CONTINUATION
FILE NAME: S_K22388_CRR_EDENBOWER.DGN