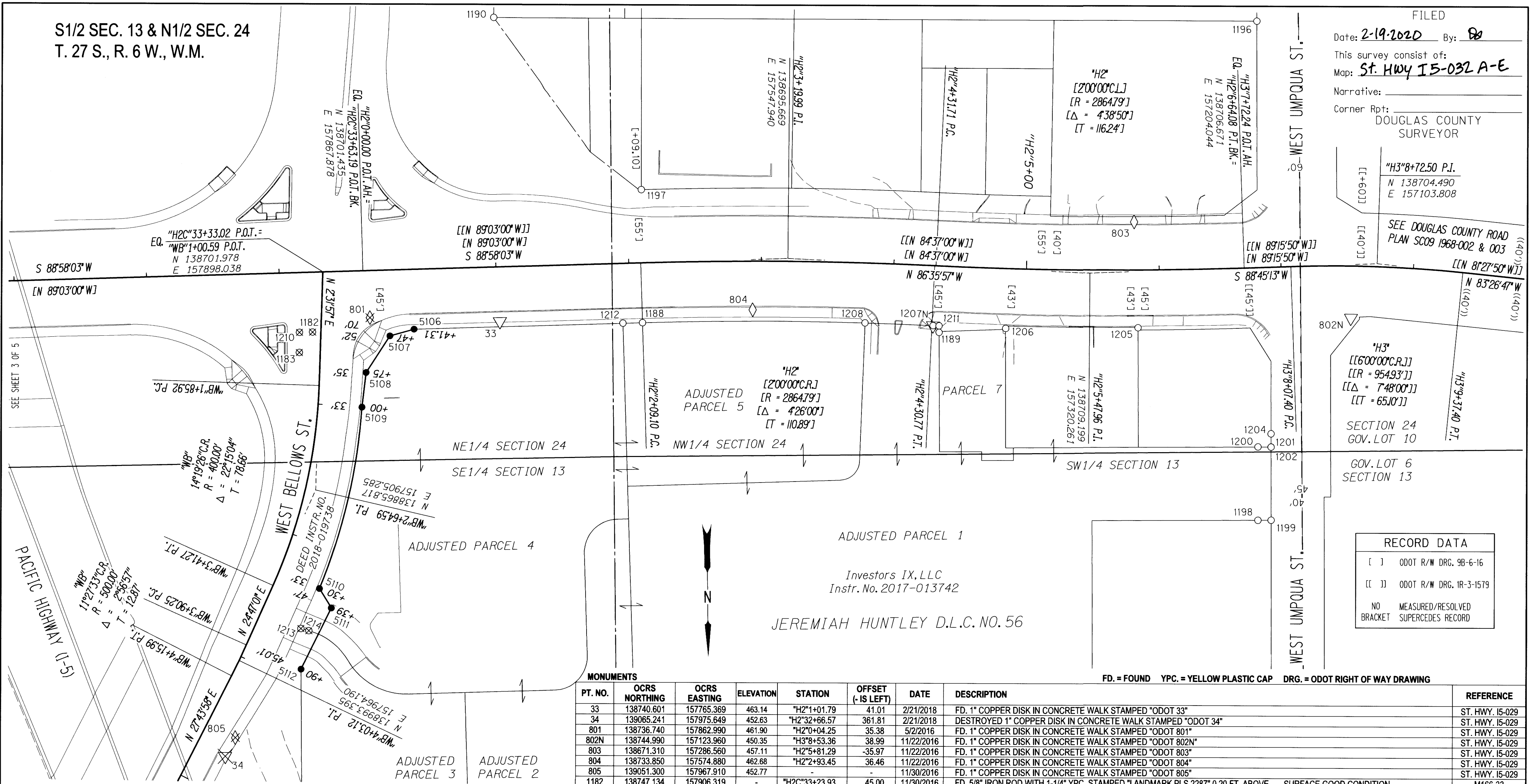


S1/2 SEC. 13 & N1/2 SEC. 24  
T. 27 S., R. 6 W., W.M.

FILED  
Date: 2-19-2020 By: *BB*  
This survey consist of:  
Map: **St. HWY I5-032 A-E**  
Narrative:  
Corner Rpt: DOUGLAS COUNTY SURVEYOR



"H3"8+72.50 P.I.  
N 138704.490  
E 157103.808  
SEE DOUGLAS COUNTY ROAD  
PLAN SC09 1968-002 & 003  
"H3"9+37.40 P.I.  
N 83'26'47"W  
E 157'320.261

"H3"  
[[6'00'00''C.R.]]  
[[R = 954.93']]  
[[Δ = 7'48'00'']]  
[[T = 65.10']]  
SECTION 24  
GOV. LOT 10  
GOV. LOT 6  
SECTION 13

RECORD DATA	
[ ]	ODOT R/W DRG. 9B-6-16
[ ]	ODOT R/W DRG. 1R-3-1579
NO	MEASURED/RESOLVED
BRACKET	SUPERCEDES RECORD

Investors IX, LLC  
Instr. No. 2017-013742  
JEREMIAH HUNTLEY D.L.C. NO. 56

PT. NO.	OCRS NORTHING	OCRS EASTING	ELEVATION	STATION	OFFSET (- IS LEFT)	DATE	DESCRIPTION	REFERENCE
33	138740.601	157765.369	463.14	"H2"1+01.79	41.01	2/21/2018	FD. 1" COPPER DISK IN CONCRETE WALK STAMPED "ODOT 33"	ST. HWY. 15-029
34	139065.241	157975.649	452.63	"H2"32+66.57	361.81	2/21/2018	DESTROYED 1" COPPER DISK IN CONCRETE WALK STAMPED "ODOT 34"	ST. HWY. 15-029
801	138736.740	157862.990	461.90	"H2"0+04.25	35.38	5/2/2016	FD. 1" COPPER DISK IN CONCRETE WALK STAMPED "ODOT 801"	ST. HWY. 15-029
802N	138744.990	157123.960	450.35	"H3"8+53.36	38.99	11/22/2016	FD. 1" COPPER DISK IN CONCRETE WALK STAMPED "ODOT 802N"	ST. HWY. 15-029
803	138671.310	157286.560	457.11	"H2"5+81.29	-35.97	11/22/2016	FD. 1" COPPER DISK IN CONCRETE WALK STAMPED "ODOT 803"	ST. HWY. 15-029
804	138733.850	157574.880	462.68	"H2"2+93.45	36.46	11/22/2016	FD. 1" COPPER DISK IN CONCRETE WALK STAMPED "ODOT 804"	ST. HWY. 15-029
805	139051.300	157967.910	452.77	-	-	11/30/2016	FD. 1" COPPER DISK IN CONCRETE WALK STAMPED "ODOT 805"	ST. HWY. 15-029
1182	138747.134	157906.319	-	"H2C"33+23.93	45.00	11/30/2016	FD. 5/8" IRON ROD WITH 1-1/4" YPC. STAMPED "LANDMARK PLS 2287" 0.20 FT. ABOVE SURFACE GOOD CONDITION	M166-33
1183	138762.362	157916.413	-	"H2C"33+13.56	60.04	11/30/2016	FD. 5/8" IRON ROD WITH 1-1/4" YPC. STAMPED "LANDMARK PLS 2287" 0.20 FT. ABOVE SURFACE GOOD CONDITION	M166-33
1188	138742.659	157658.001	-	"H2"2+09.10	45.00	12/1/2016	FD. 5/8" IRON ROD WITH 1-1/4" YPC. STAMPED "LANDMARK PLS 2287" FLUSH WITH SURFACE GOOD CONDITION	M166-33
1189	138752.360	157434.514	-	"H2"4+36.39	49.87	12/1/2016	FD. 5/8" IRON ROD WITH 1-1/2" ALUMINUM CAP STAMPED "SHANER ENGINEERING" FLUSH WITH SURFACE GOOD CONDITION	RM2-70
1190	138512.843	157767.461	-	-	-	9/28/2017	FD. 5/8" IRON REBAR, 1.0 FT. BELOW SURFACE, BENT SOUTHWESTERLY, TIED WHERE ROD IS VERTICAL, FAIR CONDITION	DRG. 9B-6-16
1196	138522.355	157192.394	-	-	-	9/28/2017	FD. 5/8" IRON ROD WITH 1-1/4" YPC. STAMPED "I.E. ENG." 0.5 FT. BELOW SURFACE, GOOD CONDITION	M125-52
1197	138642.725	157657.876	-	"H2"2+10.99	-54.92	9/28/2017	FD. 5/8" IRON ROD WITH 1-1/4" YPC. STAMPED "BENTZ SUR. INC." 0.5 FT. ABOVE SURFACE, GOOD CONDITION	M113-51
1198	138896.211	157195.805	-	-	-	9/28/2017	FD. 5/8" IRON ROD WITH 1-1/4" YPC. STAMPED "LANDMARK PLS 2287" FLUSH W/ ASPHALT SURFACE, GOOD CONDITION	M166-33
1199	138896.285	157185.823	-	-	-	9/28/2017	FD. 1" COPPER DISK IN CONCRETE WALK STAMPED "KPFF INC." FLUSH WITH SURFACE, GOOD CONDITION	M173-58
1200	138841.140	157195.132	-	-	-	9/28/2017	FD. 5/8" IRON ROD WITH 1-1/4" YPC. STAMPING NOT READABLE, 0.5 FT. ABOVE SURFACE, GOOD CONDITION	M166-33
1201	138841.305	157185.231	-	-	-	9/28/2017	FD. 1" COPPER DISK IN CONCRETE WALK STAMPED "KPFF INC." FLUSH WITH SURFACE, GOOD CONDITION	M173-58
1202	138841.386	157185.241	-	-	-	9/28/2017	FD. SCRIBED "X" IN CONCRETE, FAIR CONDITION	M166-33
1204	138831.434	157185.198	-	-	-	9/28/2017	FD. SCRIBED "X" IN CONCRETE, GOOD CONDITION	M166-33
1205	138750.703	157284.466	-	"H2"5+83.92	43.41	9/28/2017	FD. 5/8" IRON REBAR WITH 1-1/2" ALUMINUM CAP STAMPED "OREG. STATE HWY. DIV." FLUSH WITH SURFACE, GOOD CONDITION	DRG. 9B-6-16
1206	138749.914	157384.267	-	"H2"4+85.64	44.96	9/28/2017	FD. 5/8" IRON ROD WITH 1-1/4" YPC. STAMPED "KPFF INC." FLUSH W/ ASPHALT SURFACE, GOOD CONDITION	M173-58
1207N	138747.211	157439.001	460.28	"H2"4+31.68	44.99	9/28/2017	FD. 1" COPPER DISK IN CONCRETE WALK STAMPED "KPFF INC." FLUSH WITH SURFACE, GOOD CONDITION	M173-58
1208	138744.606	157490.270	-	"H2"3+79.54	44.98	9/28/2017	FD. 1" COPPER DISK IN CONCRETE WALK STAMPED "KPFF INC." FLUSH WITH SURFACE, GOOD CONDITION	M173-58
1210	138747.286	157916.129	-	"H2C"33+14.12	44.97	9/28/2017	FD. 1" COPPER DISK IN CONCRETE WALK STAMPED "KPFF INC." FLUSH WITH SURFACE, GOOD CONDITION	M173-58
1211	138747.436	157434.460	-	"H2"4+36.16	44.95	12/11/2018	FD. 1" COPPER DISK IN CONCRETE WALK STAMPED "KPFF INC." FLUSH WITH SURFACE, GOOD CONDITION	M173-58
1212	138742.832	157672.781	-	"H2"1+94.32	44.91	2/22/2018	FD. 5/8" IRON ROD WITH 1-1/4" YPC. STAMPED "KPFF INC." FLUSH WITH SURFACE, GOOD CONDITION	M173-58
1213	138969.782	157917.573	-	-	-	2/26/2018	FD. 1-1/2" ALUMINUM CAP STAMPED "KPFF INC." 0.04 FT. BELOW AC. DRIVEWAY, GOOD CONDITION	M173-58
1214	138971.462	157911.665	-	-	-	2/26/2018	FD. 1-1/2" ALUMINUM CAP STAMPED "KPFF INC." 0.1 FT. BELOW AC. DRIVEWAY, GOOD CONDITION	M173-58
5106	138745.757	157829.906	-	"WB"1+41.31	-70.00	12/5/2019	SET 5/8" X 30" IRON REBAR WITH 2" ALUMINUM CAP STAMPED "ODOT RIGHT OF WAY 5106" FLUSH WITH GROUND (NOTE: KPFF INC. MONUMENT FROM SURVEY M175-63 LEANS SOUTHERLY AND FALLS SOUTH 0.11' & EAST 0.98' OF ODOT SET MONUMENT)	DRG. 11B-9-22
5107	138750.643	157848.140	-	"WB"1+47.00	-52.00	12/5/2019	SET 5/8" X 30" IRON REBAR WITH 2" ALUMINUM CAP STAMPED "ODOT RIGHT OF WAY 5107" FLUSH WITH GROUND	DRG. 11B-9-22
5108	138777.865	157866.360	-	"WB"1+75.00	-35.00	12/5/2019	SET 5/8" X 30" IRON REBAR WITH 2" ALUMINUM CAP STAMPED "ODOT RIGHT OF WAY 5108" FLUSH WITH GROUND	DRG. 11B-9-22
5109	138803.897	157869.782	-	"WB"2+00.00	-33.00	12/5/2019	SET 5/8" X 30" IRON REBAR WITH 2" ALUMINUM CAP STAMPED "ODOT RIGHT OF WAY 5109" FLUSH WITH GROUND	DRG. 11B-9-22
5110	138939.925	157903.343	-	"WB"3+30.00	-33.00	1/13/2020	SET 5/8" X 30" IRON REBAR WITH 2" ALUMINUM CAP STAMPED "ODOT RIGHT OF WAY 5110" FLUSH WITH GROUND	DRG. 11B-9-22
5111	138954.634	157894.533	-	"WB"3+39.00	-47.00	1/13/2020	SET 5/8" X 30" IRON REBAR WITH 2" ALUMINUM CAP STAMPED "ODOT RIGHT OF WAY 5111" FLUSH WITH GROUND (NOTE: KPFF INC. MONUMENT FROM SURVEY M175-63 BENT NORTHEASTERLY AND FALLS SOUTH 0.22' & EAST 0.12' OF ODOT SET MONUMENT)	DRG. 11B-9-22
5112	139000.346	157917.827	-	"WB"3+90.00	-45.01	1/13/2020	SET 5/8" X 30" IRON REBAR WITH 2" ALUMINUM CAP STAMPED "ODOT RIGHT OF WAY 5112" 0.3' BELOW GROUND (NOTE: KPFF INC. MONUMENT FROM SURVEY M175-63 GOOD CONDITION AND FALLS SOUTH 0.40' & WEST 0.10' OF ODOT SET MONUMENT)	DRG. 11B-9-22

MONUMENTS

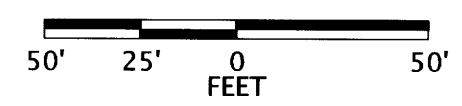
FD. = FOUND YPC. = YELLOW PLASTIC CAP DRG. = ODOT RIGHT OF WAY DRAWING

REGISTERED PROFESSIONAL LAND SURVEYOR

*Marshall R. Wagstaff*

OREGON  
JANUARY 9, 2001  
MARSHALL R. WAGSTAFF  
49476LS

RENEWS: JUNE 30, 2020



POINT LEGEND	
○	FOUND MONUMENT
⊗	DESTROYED MONUMENT
●	SET R-O-W MONUMENT
△	FOUND NETWORK POINT
△	FOUND MONUMENT USED AS NETWORK POINT
⊗	DESTROYED NETWORK POINT
◇	FOUND STRATEGIC POINT
⊗	DESTROYED STRATEGIC POINT
FOR LINE LEGEND SEE SHEET 2	

**OREGON DEPARTMENT OF TRANSPORTATION**  
RIGHT-OF-WAY BOUNDARY MONUMENTATION MAP  
I-5: EXIT 124 SIGNAL UPGRADES & BELLOWS ST. REALIGN.  
PACIFIC & NORTH UMPQUA HIGHWAYS  
DOUGLAS COUNTY  
FILE : S\_K20694\_RWM\_01.DGN MODEL : RWM

FOR ODOT REGION 3  
3500 NW. STEWART PARKWAY  
ROSEBURG, OR 97470

FEBRUARY 18, 2020  
SCALE: 1" = 50'  
SHEET 4 OF 5