

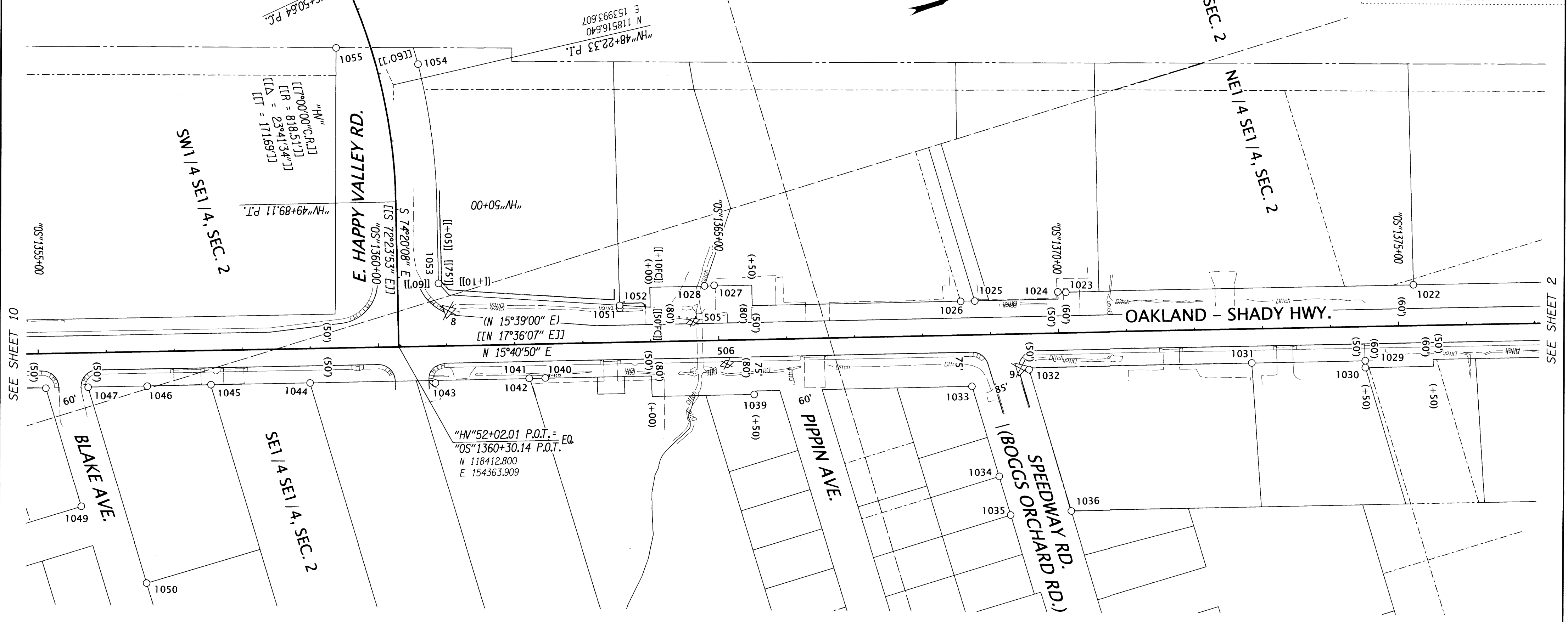
SE1/4 SEC.2, T.28 S., R.6 W., W.M.

FILED
 Date: 1-28-19 By: *Di*
 This survey consist of:
 Map: ST HWY 15-031 A-K
 Narrative:
 Corner Rpt: DOUGLAS COUNTY SURVEYOR

POINT LEGEND

- FOUND MONUMENT
- ⊗ DESTROYED NETWORK POINT
- ⊗ DESTROYED STRATEGIC POINT

SEE SHEET 2 FOR LINE LEGEND



MONUMENTS

PT. NO.	OCRS NORTHING	OCRS EASTING	ELEVATION	STATION	OFFSET (- IS LEFT)	DATE	DESCRIPTION	REFERENCE
8	118497.399	154334.206	502.06	"OS"1361+03.56	-51.46	8/23/2012	DESTROYED 5/8" x 30" IRON REBAR WITH 1 1/2" BRASS CAP STAMPED "ODOT CONTROL 8"	-
9	119277.879	154659.478	498.99	"OS"1369+42.91	50.76	8/23/2012	DESTROYED 5/8" x 30" IRON REBAR WITH 1 1/2" BRASS CAP STAMPED "ODOT CONTROL 9"	-
505	118836.746	154453.535	-	"OS"1364+82.53	-28.29	12/3/2012	DESTROYED MAG. NAIL AND WASHER STAMPED "ODOT 505"	-
506	118866.559	154527.457	-	"OS"1365+11.21	34.82	12/3/2012	DESTROYED MAG. NAIL AND WASHER STAMPED "ODOT 506"	-
1022	119866.431	154709.671	501.76	"OS"1375+23.12	-59.99	7/26/2012	FD. 5/8" IRON REBAR WITH REMNANTS OF YPC NEARBY. 0.3 FT. BELOW GOND. GOOD CONDITION	M99-57
1023	119373.966	154571.801	-	"OS"1370+11.72	-59.62	7/26/2012	FD. 5/8" IRON ROD WITH 1 1/2" ALUM. CAP STAMPED "OREGON STATE" 0.5 FT. BELOW AC DRIVEWAY. GOOD CONDITION	M99-57
1024	119362.899	154567.861	-	"OS"1370+00.00	-60.43	7/26/2012	FD. 3/4" IRON ROD 0.2 FT. BELOW GRD. GOOD CONDITION	M91-58
1025	119242.029	154545.185	-	"OS"1368+77.50	-49.59	7/26/2012	FD. 3/4" IRON ROD 0.2 FT. BELOW GRD. GOOD CONDITION	M91-58
1026	119222.025	154539.660	-	"OS"1368+56.75	-49.50	7/26/2012	FD. 2" ALUM. CAP STAMPED "AA SURVEYING SERVICE INC." 0.2 FT. BELOW GROUND GOOD CONDITION	M91-58
1027	118881.957	154411.608	-	"OS"1364+94.73	-80.88	7/26/2012	FD. 5/8" IRON ROD BENT SOUTH TIED WHERE ROD ENTERS GROUND POOR CONDITION. 0.4 FT. BELOW GROUND	ST. HWY. 99-001
1028	118868.127	154408.319	-	"OS"1364+80.52	-80.31	7/26/2012	FD. 5/8" IRON ROD LEANS SLIGHTLY SOUTH. 0.8 FT. BELOW GROUND FAIR CONDITION. "T" POST NEARBY	M57-43
1029	119766.323	154795.780	-	"OS"1374+50.01	49.98	7/26/2012	FD. 5/8" IRON REBAR 0.3 FT. ABOVE GRD. GOOD CONDITION	1999-0092
1030	119763.537	154805.432	-	"OS"1374+49.94	60.02	7/30/2012	FD. 5/8" IRON ROD 0.1 FT. BELOW GROUND GOOD CONDITION "T" POST NEARBY	1999-0092
1031	119605.566	154750.692	-	"OS"1372+83.05	50.01	7/26/2012	FD. 5/8" IRON ROD PROTRUDING THRU 1 1/4" PLASTIC CAP. NOT READABLE. 0.4 FT. BELOW GRAVEL GOOD CONDITION	1999-0092
1032	119289.406	154664.654	-	"OS"1369+55.40	52.63	7/26/2012	FD. 5/8" IRON ROD FLUSH WITH GROUND. GOOD CONDITION	1999-0092
1033	119201.870	154663.519	-	"OS"1368+70.82	75.19	7/26/2012	FD. 1 1/4" I.D. IRON PIPE. TOP OF PIPE DAMAGED. 1.8 FT. BELOW GRD. FAIR CONDITION. (POSITION OF PIPE GOOD)	M91-58
1034	119202.125	154801.484	-	"OS"1369+08.35	207.96	7/26/2012	FD. 1 1/8" MUSHROOMED HEAD IRON ROD FLUSH WITH AC. GOOD CONDITION	M57-43
1035	119201.627	154860.573	-	"OS"1369+23.84	264.98	7/26/2012	FD. 5/8" SMOOTH IRON ROD FLUSH WITH GRAVEL GROUND.	2004-0065
1036	119288.721	154880.712	-	"OS"1370+13.14	260.83	7/26/2012	FD. 5/8" IRON REBAR BENT BADLY S.W. TIED WHERE ROD ENTERS GROUND. POOR CONDITION	1999-0092
1039	118891.886	154581.814	-	"OS"1365+50.29	80.31	7/26/2012	FD. 5/8" THREADED BOLT WITH 1 1/2" NUT DOWN 1" ON BOLT. 0.8 FT. BELOW GROUND GOOD CONDITION	M127-34
1040	118604.741	154469.536	-	"OS"1362+43.48	49.82	7/26/2012	FD. 3/4" IRON ROD LEANS WEST 0.7 FT BELOW GROUND FAIR CONDITION.	M82-21
1041	118582.288	154463.118	-	"OS"1362+20.11	49.71	7/26/2012	FD. 1 1/2" I.D. PIPE WITH A 5/8" IRON ROD ON ITS EAST SIDE. TOP OF PIPE MUSHROOMED GOOD CONDITION	M126-15
1042	118582.263	154463.193	-	"OS"1362+20.13	49.79	7/26/2012	FD. 5/8" IRON ROD WITH 1 1/2" I.D. IRON PIPE ON ITS WEST SIDE GOOD CONDITION 0.2 FT. BELOW GROUND	M82-21
1043	118448.576	154429.991	-	"OS"1360+82.44	53.95	7/26/2012	FD. 1/2" I.D. IRON PIPE 1.1 FT BELOW GROUND GOOD CONDITION	M82-21
1044	118272.523	154376.775	-	"OS"1358+98.56	50.30	7/26/2012	FD. 5/8" IRON ROD WITH 1 1/4" YPC STAMPED "AA SURVEYING" 0.2 FT. BELOW GROUND GOOD CONDITION	M120-6
1045	118132.249	154337.260	-	"OS"1357+52.82	50.17	7/26/2012	FD. 5/8" IRON ROD WITH 1 1/4" YPC STAMPED "BENTZ SUR INC." 1.6 FT. BELOW GROUND GOOD CONDITION	M104-61A
1046	118041.890	154312.302	-	"OS"1356+59.08	50.56	7/26/2012	FD. 5/8" IRON ROD WITH 1 1/4" YPC STAMPED "BENTZ SUR INC." 0.3 FT. BELOW GROUND GOOD CONDITION	M104-61A
1050	117957.325	154588.888	-	"OS"1356+52.42	339.71	7/26/2012	FD. 5/8" IRON ROD PROTRUDING THROUGH 1 1/4" YPC STAMP NOT READABLE. FLUSH WITH GROUND GOOD CONDITION	M104-61A
1051	118739.182	154403.724	-	"OS"1363+55.13	-49.88	7/26/2012	FD. 5/8" IRON ROD WITH 1 1/4" YPC STAMPED "IE ENG" 0.6 FT BELOW GROUND GOOD CONDITION	M132-80
1052	118740.313	154399.580	-	"OS"1363+55.10	-54.17	7/26/2012	FD. 5/8" IRON ROD WITH 1 1/4" YPC STAMPED "NEATHAMMER LS 2675" 0.2 BELOW GROUND GOOD CONDITION	M143-36
1053	118495.397	154291.620	-	"HV"51+10.10	-60.01	7/26/2012	FD. 1 1/2" ALUM. CAP STAMPED "ODOT RIGHT OF WAY" 0.6 FT. BELOW GROUND GOOD CONDITION STATION 51+10.60LT	ST. HWY. 99-003
1054	118560.012	153975.148	-	"HV"48+00.03	-60.12	7/26/2012	FD. 1 1/2" ALUM. CAP STAMPED "ODOT RIGHT OF WAY" 0.3 FT. BELOW GROUND GOOD CONDITION 60LT	ST. HWY. 99-003
1055	118451.811	153917.454	-	"HV"47+43.57	48.60	7/26/2012	FD. 5/8" IRON REBAR FLUSH WITH GROUND GOOD CONDITION.	M112-8

FD. = FOUND I.D. = INSIDE DIAMETER ALUM. = ALUMINUM YPC = YELLOW PLASTIC CAP

RECORD DATA

() ODOT R/W DRG. 48-26-6
 [] ODOT R/W DRG. 108-4-5
 NO MEASURED/RESOLVED
 BRACKET SUPERCEDES RECORD

FC = FALSE CALL POINT
 (DEFINES DIRECTION ONLY)

100 50 0 100
 FEET

REGISTERED PROFESSIONAL LAND SURVEYOR
Marshall R. Wagstaff
 OREGON
 JANUARY 9, 2001
 MARSHALL R. WAGSTAFF
 49476LS
 RENEWS: JUNE 30, 2020

OREGON DEPARTMENT OF TRANSPORTATION
 HORIZONTAL CONTROL, RECOVERY, RETRACEMENT & BOUNDARY MONUMENTATION MAP
 I-5: EXIT 119 & 120 INTERCHANGE IMPROVEMENTS
 PACIFIC HWY./COOS BAY - ROSEBURG HWY./OLD HWY. 99
 DOUGLAS COUNTY
 FILE: 17918RW.DGN :: CRR

ODOT REGION 3 TECH CENTER
 3500 NW. STEWART PKWY.
 ROSEBURG, OR. 97470

JANUARY 10, 2019
 SCALE: 1" = 100'
 SHEET 11 OF 11

ST. HWY. 15-031 K