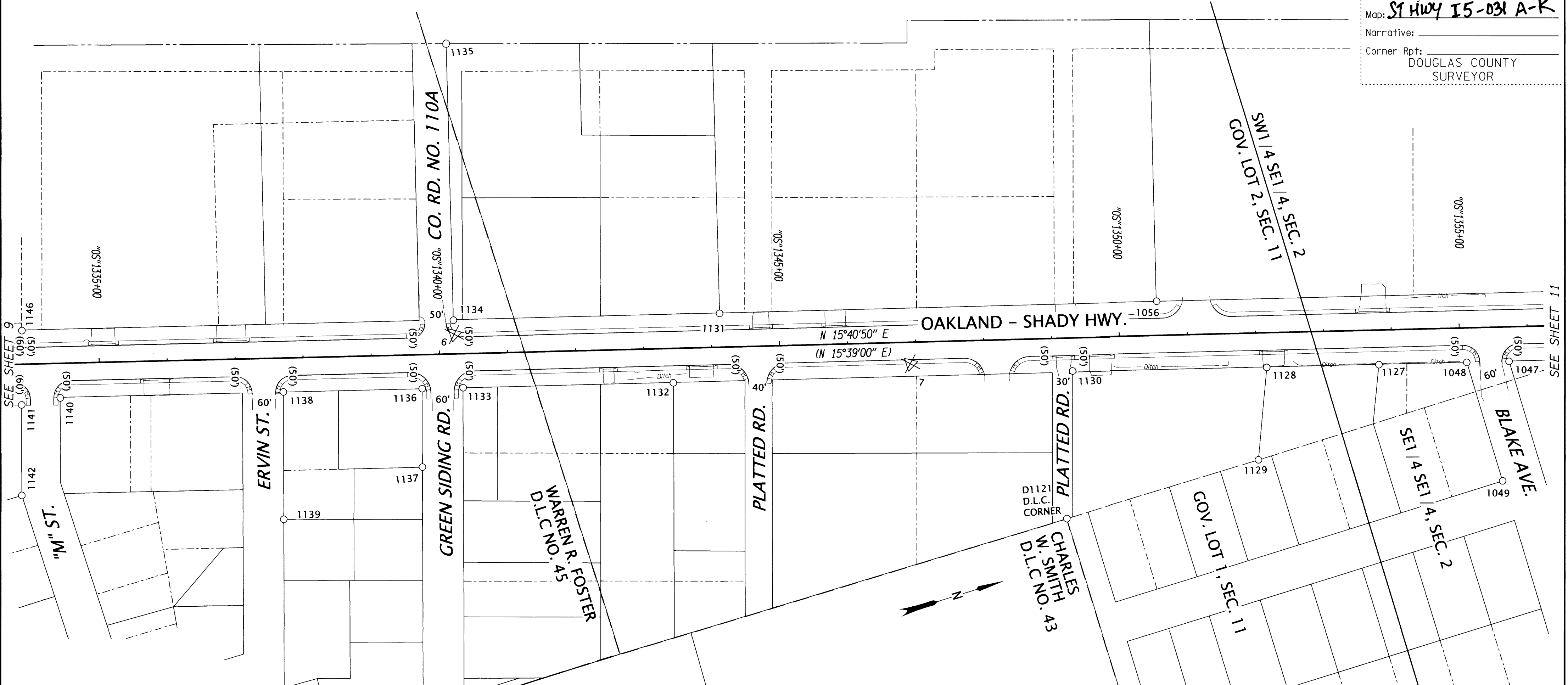


SE1/4 SEC.2 & NE1/4 SEC.11, T.28 S., R.6 W., W.M.

FILED
 Date: 1-28-19 By: [Signature]
 This survey consist of:
 Map: ST HWY I5-031 A-K
 Narrative:
 Corner Rpt:
 DOUGLAS COUNTY
 SURVEYOR



RECORD DATA

() ODOT R/W DRG. 4B-26-6

NO MEASURED/RESOLVED
 BRACKET SUPERCEDES RECORD

POINT LEGEND

○ FOUND MONUMENT

⊗ DESTROYED NETWORK POINT

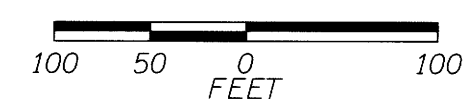
SEE SHEET 2 FOR LINE LEGEND

REGISTERED
 PROFESSIONAL
 LAND SURVEYOR

Marshall R. Wagstaff

OREGON
 JANUARY 9, 2001
 MARSHALL R. WAGSTAFF
 49476LS

RENEWS: JUNE 30, 2020



MONUMENTS FD. = FOUND ALUM. = ALUMINUM YPC = YELLOW PLASTIC CAP

PT. NO.	OCRS NORTHING	OCRS EASTING	ELEVATION	STATION	OFFSET (- IS LEFT)	DATE	DESCRIPTION	REFERENCE
6	116487.687	153793.830	525.03	"OS"1340+22.59	-28.55	8/23/2012	DESTROYED 5/8" x 30" IRON REBAR WITH 1 1/2" BRASS CAP STAMPED "ODOT CONTROL 6"	-
7	117115.460	154032.481	523.55	"OS"1346+91.50	31.54	8/23/2012	DESTROYED 5/8" x 30" IRON REBAR WITH 1 1/2" BRASS CAP STAMPED "ODOT CONTROL 7"	-
1047	117958.162	154288.789	-	"OS"1355+72.12	50.55	7/26/2012	FD. 5/8" IRON ROD WITH 1 1/4" YPC STAMPED "BENTZ SUR INC." 0.1 FT. ABOVE GROUND GOOD CONDITION	M104-61A
1048	117898.172	154272.054	-	"OS"1355+09.84	50.65	7/26/2012	FD. 5/8" IRON ROD WITH 1 1/4" YPC STAMPED "HIBBS LS 52989" FLUSH WITH GROUND GOOD CONDITION	M148-5
1049	117897.814	154453.149	-	"OS"1355+58.44	225.11	7/26/2012	FD. 5/8" IRON REBAR BENT S.E. TIED WHERE ROD ENTERS GROUND. FLUSH WITH GRAVEL DRIVE. POOR CONDITION	M148-5
1056	117488.608	154052.674	-	"OS"1350+56.22	-49.87	7/26/2012	FD. 3/4" IRON ROD 0.5 FT. BELOW GROUND GOOD CONDITION	RM2-81
1127	117773.558	154237.166	-	"OS"1353+80.43	50.74	8/16/2012	FD. 5/8" IRON REBAR WITH 1 1/4" YPC STAMPED "HIBBS L.S. 52989". 0.45 FT. ABOVE GROUND GOOD CONDITION	M159-44
1128	117614.642	154192.666	517.05	"OS"1352+15.40	50.85	8/16/2012	FD. 5/8" IRON ROD FLUSH WITH AC DRIVE, GOOD CONDITION	M122-78
1129	117563.423	154318.306	-	"OS"1352+00.05	185.66	8/16/2012	FD. 5/8" IRON ROD WITH 1" YPC STAMPED "L.S. 660". 0.3 FT. BELOW GROUND FAIR CONDITION. "T" POST NORTH SIDE OF ROD	M122-78
1130	117340.561	154113.306	-	"OS"1349+30.07	48.52	8/16/2012	FD. 5/8" BRASS ROD, 0.8 FT. BELOW GROUND GOOD CONDITION	NO RECORD
1131	116869.225	153879.502	-	"OS"1344+13.09	-49.19	8/16/2012	FD. 5/8" IRON ROD WITH 1 1/4" YPC STAMPED "R BATH L.S. 1069". 0.1 FT. BELOW GROUND GOOD CONDITION. "T" POST ON SE SIDE OF ROD.	M122-2
1132	116774.251	153956.481	-	"OS"1343+42.45	50.59	8/16/2012	FD. 5/8" BRASS ROD 0.6 FT. ABOVE GROUND GOOD CONDITION, SET IN WATER RUN OFF DITCH.	M25-30
1133	116477.090	153872.548	-	"OS"1340+33.67	50.10	8/16/2012	FD. 1 1/2" DIA. PIPE 0.5 FT. BELOW GROUND FAIR CONDITION	M25-30
1134	116492.632	153773.896	-	"OS"1339+21.97	-49.08	8/16/2012	FD. 5/8" IRON ROD WITH 1 1/4" RED PLASTIC CAP STAMPED "SWEEDEN L.S. 2752" 0.2 FT. ABOVE GROUND GOOD CONDITION	M153-79
1135	116602.255	153382.542	-	"OS"1340+21.74	-455.50	8/16/2012	FD. 5/8" IRON ROD WITH 1 1/2" ALUM. CAP STAMPED "SHANER ENGINEERING" 0.3 FT. BELOW GROUND GOOD CONDITION	RM2-81
1136	116419.257	153856.355	-	"OS"1339+73.61	50.14	8/16/2012	FD. 5/8" IRON ROD WITH 1 1/4" RED PLASTIC CAP STAMPED "D.A. EDWARDS LS 2339" 0.1 FT. ABOVE GROUND GOOD CONDITION	M152-40
1137	116385.826	153966.563	-	"OS"1339+71.21	165.28	8/16/2012	FD. 1 1/2" DIA. PIPE LEANING SOUTH SLIGHTLY, 0.7 FT. BELOW GROUND TIED ON SOUTH EDGE OF PIPE.	M152-40
1138	116223.081	153801.073	-	"OS"1337+69.79	49.94	8/16/2012	FD. 5/8" IRON ROD WITH 1 1/4" RED PLASTIC CAP STAMPED "D.A. EDWARDS LS 2339" 0.1 FT. ABOVE GROUND GOOD CONDITION	M152-40
1139	116168.791	153980.001	-	"OS"1337+65.88	236.88	8/16/2012	FD. 5/8" IRON ROD 0.6 FT. BELOW GROUND, GOOD CONDITION	M92-14
1140	115906.832	153713.451	-	"OS"1334+41.63	51.05	8/16/2012	FD. "T" POST 0.4 FT. BELOW AC NEXT TO CONCRETE CURB, INSIDE ISLAND CURB, FAIR CONDITION.	RM3-77A
1141	115849.510	153706.656	-	"OS"1333+84.61	60.00	8/16/2012	FD. 5/8" IRON ROD WITH 1 1/4" RED PLASTIC CAP STAMPED "D.A. EDWARDS LS 2339" 0.4 FT. ABOVE GROUND GOOD CONDITION	M145-11
1146	115881.885	153602.543	-	"OS"1333+87.64	-48.99	8/16/2012	FD. 5/8" IRON ROD WITH 1 1/2" ALUM. CAP STAMPED "SHANER ENGINEERING" 0.8 FT. BELOW GROUND GOOD CONDITION	RM2-81
D1121	117269.012	154317.238	-	"OS"1349+16.30	264.20	7/31/2012	FD. 2 1/2" BRASS CAP STAMPED "COUNTY SURVEYORS OFFICE T28S NW D1C 43 R6W". 0.4 FT. BELOW GROUND IN DITCH NEXT TO CHAIN LINK FENC E CORNER.	C.S. 49/139

OREGON DEPARTMENT OF TRANSPORTATION
 HORIZONTAL CONTROL, RECOVERY, RETRACEMENT & BOUNDARY MONUMENTATION MAP
 I-5: EXIT 119 & 120 INTERCHANGE IMPROVEMENTS
 PACIFIC HWY./COOS BAY - ROSEBURG HWY./OLD HWY. 99
 DOUGLAS COUNTY
 FILE: 17918RW.DGN :: CRR

ODOT REGION 3 TECH CENTER
 3500 NW. STEWART PKWY.
 ROSEBURG, OR. 97470

JANUARY 10, 2019
 SCALE: 1" = 100'
 SHEET 10 OF 11

