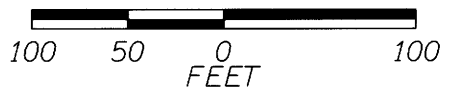
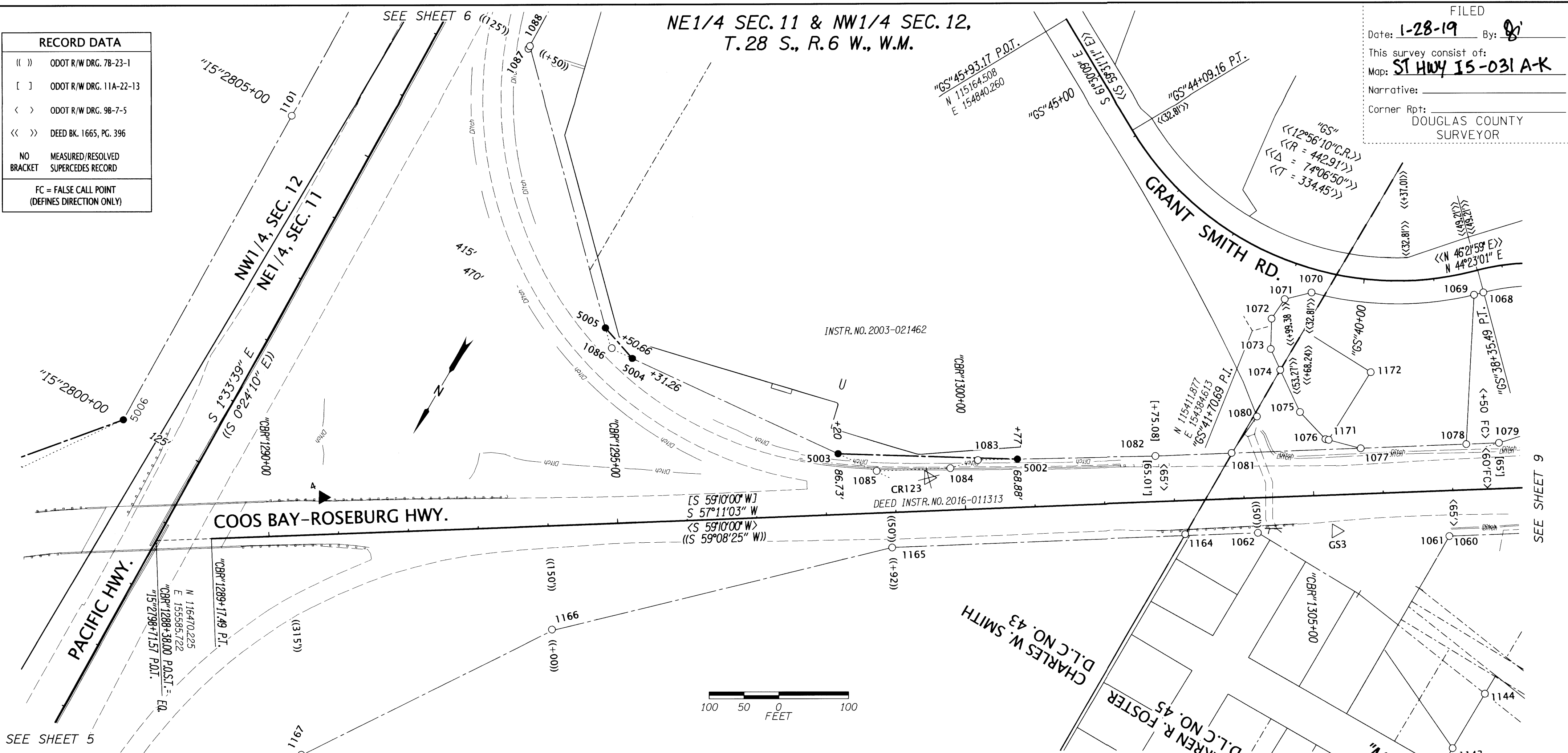


NE1/4 SEC. 11 & NW1/4 SEC. 12,
T. 28 S., R. 6 W., W.M.

FILED
Date: 1-28-19 By: *g*
This survey consist of:
Map: ST HWY 15-031 A-K
Narrative:
Corner Rpt: DOUGLAS COUNTY SURVEYOR

RECORD DATA	
()	ODOT R/W DRG. 7B-23-1
[]	ODOT R/W DRG. 11A-22-13
< >	ODOT R/W DRG. 9B-7-5
<< >>	DEED BK. 1665, PG. 396
NO BRACKET	MEASURED/RESOLVED SUPERCEDES RECORD
FC	FALSE CALL POINT (DEFINES DIRECTION ONLY)



PT. NO.	OCRS NORTHING	OCRS EASTING	ELEVATION	STATION	OFFSET (- IS LEFT)	DATE	DESCRIPTION	REFERENCE
1060	115519.902	153991.838	-	*CBR*1306+92.54	65.12	7/30/2012	FD. 5/8" IRON ROD WITH 1 1/2" ALUM. CAP STAMPED "OREG. STATE HWY DIV." THE REST OF STAMP IS NOT READABLE 0.4 FT. ABOVE GROUND GOOD CONDITION METAL WITNESS POST NEARBY NO PADDLE BOARD	9B-7-5
1061	115519.957	153991.931	-	*CBR*1306+92.44	65.12	7/30/2012	FD. 5/8" IRON REBAR WITH 1 1/4" YPC STAMPED "M.E. FARR LS 1181" 0.3 FT ABOVE GROUND GOOD CONDITION	NO RECORD
1062	115656.111	154230.901	-	*CBR*1304+17.81	50.04	7/30/2012	FD. 1 1/2" I.D. IRON PIPE. 0.4 FT BELOW GROUND GOOD CONDITION.	ST. HWY. 42-011
1068	115195.619	154127.016	-	*GS*38+35.95	-32.83	7/30/2012	FD. 5/8" IRON REBAR WITH 1 1/4" YPC STAMPED "AA SURVEYING" 0.1 FT. BELOW GROUND OF ACCESS. GOOD CONDITION.	M148-45
1069	115205.326	154136.783	-	*GS*38+48.79	-32.83	7/30/2012	FD. 5/8" IRON REBAR WITH 1 1/4" YPC STAMP NOT READABLE. FLUSH WITH ACCESS GROUND. ROD GOOD CONDITION	M148-45
1070	115321.410	154339.333	-	*GS*40+68.35	-32.95	7/30/2012	FD. 5/8" IRON REBAR WITH 1 1/4" YPC STAMPED "AA SURVEYING" 0.1 FT. BELOW GROUND GOOD CONDITION.	M148-45
1071	115349.221	154367.655	-	*GS*40+99.40	-53.34	7/30/2012	FD. 5/8" IRON REBAR WITH 1 1/4" YPC STAMPED "AA SURVEYING" 0.3 FT. ABOVE GROUND FAIR CONDITION.	M148-45
1072	115382.898	154369.659	-	*CBR*1304+49.26	-254.78	7/30/2012	FD. 5/8" IRON REBAR WITH 1 1/4" YPC STAMPED "AA SURVEYING" 0.1 FT. ABOVE GROUND GOOD CONDITION.	M148-45
1073	115420.671	154348.472	-	*CBR*1304+46.60	-211.55	7/30/2012	FD. 5/8" IRON REBAR WITH 1 1/4" YPC STAMPED "AA SURVEYING" 0.1 FT. BELOW GROUND GOOD CONDITION.	M148-45
1074	115439.510	154321.494	-	*CBR*1304+59.06	-181.10	7/30/2012	FD. 5/8" IRON REBAR WITH 1 1/4" YPC STAMPED "AA SURVEYING" 0.1 FT. ABOVE GROUND GOOD CONDITION.	M148-45
1075	115476.923	154266.569	-	*CBR*1304+84.95	-119.89	7/30/2012	FD. 5/8" IRON REBAR WITH 1 1/4" YPC STAMPED "AA SURVEYING" 0.1 FT. FLUSH WITH GROUND GOOD CONDITION.	M148-45
1076	115491.710	154215.391	-	*CBR*1305+19.94	-79.72	7/30/2012	FD. 5/8" IRON REBAR WITH 1 1/4" YPC STAMPED "AA SURVEYING" 0.1 FT. ABOVE GROUND GOOD CONDITION.	M148-45
1077	115477.168	154165.189	-	*CBR*1305+70.02	-64.74	7/30/2012	FD. 5/8" IRON REBAR WITH 1 1/4" YPC STAMPED "AA SURVEYING" 0.3 FT. ABOVE GROUND GOOD CONDITION.	M148-45
1078	115394.820	154037.737	-	*CBR*1307+21.76	-64.88	7/30/2012	FD. 5/8" IRON REBAR WITH 1 1/4" YPC STAMPED "AA SURVEYING" 0.1 FT. ABOVE GROUND GOOD CONDITION.	M148-45
1079	115369.279	153998.255	-	*CBR*1307+68.78	-64.94	7/30/2012	FD. 5/8" IRON REBAR WITH 1 1/4" YPC STAMPED "AA SURVEYING" 0.2 FT. ABOVE GROUND GOOD CONDITION.	M148-45
1080	115514.012	154316.501	-	*CBR*1304+22.88	-115.78	9/17/2012	FD. 5/8" IRON ROD WITH 1 1/4" YPC STAMPED "I.E. ENG." 0.5 FT. BELOW GROUND GOOD CONDITION	M139-17
1081	115577.405	154321.359	527.15	*CBR*1303+84.44	-65.13	7/30/2012	FD. 5/8" IRON REBAR WITH 1 1/4" YPC STAMPED "BENTZ SUR. INC." 0.8 FT. BELOW GROUND. GOOD CONDITION	M107-33
1082	115636.727	154413.127	-	*CBR*1302+75.17	-65.01	7/30/2012	FD. 5/8" IRON REBAR WITH 1 1/4" YPC LAYING NEARBY STAMPED "OSHD R/W" 0.4 FT. BELOW GROUND GOOD CONDITION. PADDLE BOARD NEARBY MARKED "SHRW 1302+75 65" LT	ST. HWY. 42-011
1083	115771.051	154629.891	-	*CBR*1300+20.20	-69.60	7/30/2012	FD. 5/8" IRON ROD WITH A 1 1/4" YPC STAMPED "OSHD R/W" 0.7 FT. BELOW GROUND GOOD CONDITION STA. 1300+20. 70 LT.	ST. HWY. 42-011
1084	115800.855	154658.095	-	*CBR*1299+80.35	-59.83	7/30/2012	FD. 5/8" IRON ROD WITH A 1 1/4" YPC STAMPED "OSHD R/W" 0.4 FT. BELOW GROUND GOOD CONDITION PADDLE BOARD NEARBY MARKED "SHRW 1299 +80 60 LT."	ST. HWY. 42-011
1085	115857.242	154747.211	-	*CBR*1298+74.52	-60.15	7/30/2012	FD. 5/8" IRON ROD WITH 1 1/4" YPC STAMPED "OSHD R/W" FLUSH WITH GROUND GOOD CONDITION. "A" 60 LT	ST. HWY. 42-011
1086	115900.915	155163.919	-	*CBR*1295+01.40	-250.45	7/30/2012	FD. 5/8" SMOOTH IRON ROD 0.1 FT ABOVE GROUND GOOD CONDITION STA. 1295+00 250 LT. "A" LINE.	7B-23-1
1142	115810.494	153833.893	-	*OS*1333+81.43	193.05	8/16/2012	FD. 5/8" IRON ROD WITH 1 1/4" RED PLASTIC CAP STAMPED "D.A. EDWARDS LS 2339" 0.7 FT. ABOVE GROUND GOOD CONDITION	M145-11
1143	115777.699	153833.784	-	*OS*1333+49.83	201.81	8/16/2012	FD. 5/8" IRON ROD WITH 1 1/4" RED PLASTIC CAP STAMPED "D.A. EDWARDS LS 2339" 0.7 FT. ABOVE GROUND GOOD CONDITION	M145-11
1144	115687.438	153833.446	-	*OS*1332+59.40	225.87	8/16/2012	FD. 5/8" IRON REBAR BENT SLIGHTLY WEST, TIED WHERE REBAR ENTERS GROUND 0.1 FT. BELOW GROUND FAIR CONDITION	M145-11
1164	115710.987	154319.675	-	*CBR*1303+13.47	48.04	1/6/2017	FD. IRON ROD WITH 1 1/4" YPC STAMPED "LANDMARK PLS 2287" 0.3 FT. ABOVE GROUND. GOOD CONDITION	M171-3
1165	115940.995	154672.316	-	*CBR*1298+92.45	50.24	1/6/2017	FD. IRON ROD WITH 1 1/4" YPC STAMPED "LANDMARK PLS 2287" 0.4 FT. ABOVE GROUND. GOOD CONDITION	M171-3
1166	116290.567	155032.832	-	*CBR*1294+00.02	148.65	1/6/2017	FD. IRON ROD WITH 1 1/4" YPC STAMPED "LANDMARK PLS 2287" 0.5 FT. BELOW GROUND. GOOD CONDITION	M171-3
1171	115490.217	154210.926	-	*CBR*1305+24.51	-78.56	2/14/2017	FD. IRON ROD WITH 1 1/4" YPC STAMPED "AA SURVEYING" 0.1 FT. ABOVE GROUND. GOOD CONDITION	M168-40
1172	115376.139	154208.114	-	*CBR*1305+88.89	-172.91	2/14/2017	FD. IRON ROD WITH 1 1/4" YPC STAMPED "AA SURVEYING" FLUSH WITH GROUND. GOOD CONDITION	M168-40
5002	115740.869	154581.774	-	*CBR*1300+77.00	-68.88	8/16/2018	SET 5/8 X 30" IRON REBAR WITH 2" ALUM. CAP STAMPED "ODOT RIGHT OF WAY 5002"	-
5003	115865.146	154807.435	-	*CBR*1298+20.00	-86.73	8/16/2018	SET 5/8 X 30" IRON REBAR WITH 2" ALUM. CAP STAMPED "ODOT RIGHT OF WAY 5003"	-
5004	115897.940	155131.140	-	"IS"2804+31.26	470.00	8/16/2018	SET 5/8 X 30" IRON REBAR WITH 2" ALUM. CAP STAMPED "ODOT RIGHT OF WAY 5004"	-
5005	115880.047	155186.648	-	"IS"2804+50.66	415.00	8/16/2018	SET 5/8 X 30" IRON REBAR WITH 2" ALUM. CAP STAMPED "ODOT RIGHT OF WAY 5005"	-
CR123	115828.270	154678.018	536.48	*CBR*1299+48.75	-47.59	8/27/2012	DESTROYED 1 1/2" BRASS CAP STAMPED "ODOT CONTROL 123" 0.5 FT. BELOW GROUND GOOD CONDITION	ST. HWY. 42-007
GS3	115596.372	154135.506	527.33	*CBR*1305+30.36	51.53	8/27/2012	FD. 1/2" SQ IRON ROD WITH 1 1/2" ALUM. CAP STAMPED "ODOT HORIZ. CONTROL 3" 0.1 FT. BELOW GROUND GOOD CONDITION ORANGE CARSONITE WITNESS POST NEARBY.	ST. HWY. 42-002

POINT LEGEND

- FOUND MONUMENT
- ⊗ DESTROYED NETWORK POINT
- △ FOUND NETWORK POINT
- ▲ SET NETWORK POINT
- SET RIGHT OF WAY MON

SEE SHEET 2 FOR LINE LEGEND

REGISTERED PROFESSIONAL LAND SURVEYOR
Marshall R. Waples
OREGON
JANUARY 9, 2001
MARSHALL R. WAGSTAFF
49476LS
RENEWS: JUNE 30, 2020

OREGON DEPARTMENT OF TRANSPORTATION
HORIZONTAL CONTROL, RECOVERY, RETRACEMENT & BOUNDARY MONUMENTATION MAP
I-5: EXIT 119 & 120 INTERCHANGE IMPROVEMENTS
PACIFIC HWY./COOS BAY - ROSEBURG HWY./OLD HWY. 99
DOUGLAS COUNTY
FILE: 17918RW.DGN :: CRR

ODOT REGION 3 TECH CENTER
3500 NW STEWART PKWY.
ROSEBURG, OR. 97470

JANUARY 10, 2019
SCALE: 1" = 100'
SHEET 8 OF 11