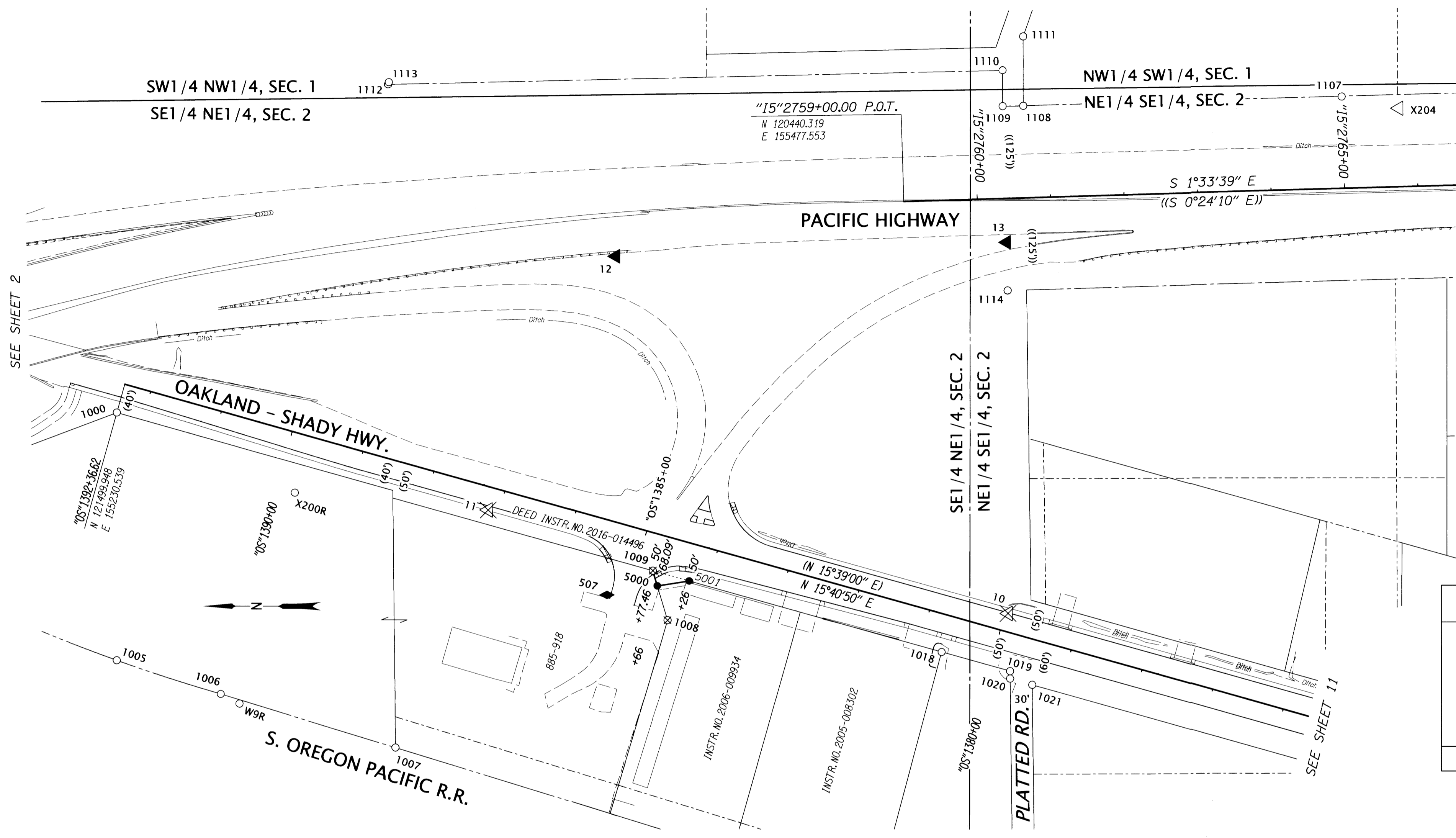


FILED
 Date: 1-28-19 By: [Signature]
 This survey consist of:
 Map: ST. HWY 15-031 A-K
 Narrative:
 Corner Rpt: DOUGLAS COUNTY SURVEYOR



RECORD DATA

()	ODOT R/W DRG. 48-26-6
(())	ODOT R/W DRG. 78-23-1
NO BRACKET	MEASURED/RESOLVED SUPERCEDES RECORD

POINT LEGEND

○	FOUND MONUMENT
△	FOUND NETWORK POINT
▲	SET NETWORK POINT
●	SET R/W MONUMENT
◆	SET STRATEGIC POINT

SEE SHEET 2 FOR LINE LEGEND

MONUMENTS

PT. NO.	OCRS NORTHING	OCRS EASTING	ELEVATION	STATION	OFFSET (- IS LEFT)	DATE	DESCRIPTION	REFERENCE
10	120298.889	154918.599	515.63	"OS"1379+95.95	24.28	8/23/2012	DESTROYED 5/8" x 30" IRON REBAR WITH 1 1/2" BRASS CAP STAMPED "ODOT CONTROL 10"	-
11	121006.021	155059.869	529.81	"OS"1387+14.95	-30.82	8/23/2012	DESTROYED 1" COPPER DISK IN CONCRETE SIGN BASE STAMPED "ODOT CONTROL 11"	-
12	120832.537	155403.840	556.24	-	-	8/23/2012	SET 5/8" x 30" IRON REBAR WITH 1 1/2" BRASS CAP STAMPED "ODOT CONTROL 12"	-
13	120300.561	155421.627	552.46	"IS"2760+38.18	59.71	8/23/2012	SET 5/8" x 30" IRON REBAR WITH 1 1/2" BRASS CAP STAMPED "ODOT CONTROL 13"	-
507	120844.905	154944.384	522.47	"OS"1385+28.61	-98.46	12/11/2012	SET MAG. NAIL AND WASHER STAMPED "ODOT 507"	-
1005	121511.297	154855.463	-	"OS"1391+46.17	-364.18	7/25/2012	FD. 5/8" IRON ROD WITH REMNANTS OF " YPC VISIBLE. 0.2 FT. ABOVE GROUND GOOD CONDITION PADDLE BOARD NEARBY MARKED "SHRW"	1R-3-1492
1006	121369.700	154809.806	-	"OS"1389+97.51	-369.87	7/25/2012	FD. 5/8" IRON ROD WITH 1 1/4" YPC STAMPED "OREGON STATE HIGHWAY DIV" FLUSH WITH GROUND GOOD CONDITION PADDLE BOARD NEARBY MARKED "SHRW"	1R-3-1492
1007	121131.974	154737.205	-	"OS"1387+49.00	-375.52	7/25/2012	FD. 5/8" IRON ROD 0.1 FT. ABOVE GROUND GOOD CONDITION	1R-3-1492
1008	120762.458	154910.137	-	"OS"1384+39.98	-109.15	7/26/2012	DESTROYED 1" I.D. IRON PIPE LEANS S.W. TIED TOP N.E. EDGE OF PIPE. 0.2 FT. ABOVE GROUND FAIR CONDITION	1R-3-1492
1009	120782.558	154977.235	-	"OS"1384+77.47	-49.99	7/26/2012	DESTROYED 3/4" 6 SIDED IRON ROD 1.0 FT. BELOW RED CINDER GRAVEL. GOOD CONDITION PADDLE BOARD NEARBY MARKED "SHRW"	1R-3-1492
1018	120389.534	154866.610	-	"OS"1380+69.17	-50.27	7/26/2012	FD. 5/8" IRON ROD WITH 1 1/4" YPC STAMPED "AA SURVEY" 0.3 FT. BELOW GROUND GOOD CONDITION	M106-73
1019	120296.277	154840.390	-	"OS"1379+72.30	-50.31	7/26/2012	FD. 5/8" IRON ROD WITH 1 1/4" YPC VISIBLE STAMPING "SURVEYING INC." 0.5 FT. BELOW GROUND GOOD CONDITION	M99-57
1020	120296.261	154830.350	-	"OS"1379+69.57	-59.97	7/26/2012	FD. 5/8" IRON ROD PROTRUDING THROUGH YPC STAMP OR CAP NOT READABLE. ROD 0.2 FT. BELOW GROUND GOOD CONDITION	M99-57
1021	120266.194	154821.825	-	"OS"1379+38.32	-60.05	7/26/2012	FD. 5/8" IRON REBAR WITH REMNANTS OF YPC NEARBY. 0.2 FT. BELOW GOND. GOOD CONDITION	M99-57
1107	119843.931	155618.203	-	"IS"2765+00.00	-124.36	7/31/2012	FD. 5/8" SMOOTH IRON ROD BENT WEST TIED WHERE ROD ENTERS GROUND POOR CONDITION STA. 2765+00	78-23-1
1108	120277.326	155606.825	-	"IS"2760+66.45	-124.79	9/18/2012	FD. 5/8" IRON REBAR 0.6 FT. ABOVE GROUND GOOD CONDITION	M147-5
1109	120305.449	155606.382	-	"IS"2760+38.33	-125.11	9/18/2012	FD. 5/8" SMOOTH IRON ROD LEANS SOUTH. 0.9 FT. ABOVE GROUND TIED WHERE ROD ENTERS GROUND FAIR CONDITION	ST. HWY. 15-014
1110	120305.548	155655.661	-	"IS"2760+39.57	-174.37	9/18/2012	FD. 5/8" SMOOTH IRON ROD LEANS WEST. 0.8 FT ABOVE GROUND TIED WHERE ROD ENTERS GROUND FAIR CONDITION. 4"x4" R/W POST NEARBY.	ST. HWY. 15-014
1111	120277.360	155699.844	-	"IS"2760+68.95	-217.77	7/31/2012	FD. 5/8" IRON REBAR WITH 1 1/4" YPC STAMPED "AA SURVEYING" 0.2 FT ABOVE GROUND GOOD CONDITION	M147-5
1112	121140.881	155637.704	-	-	-	7/31/2012	FD. 5/8" SMOOTH IRON ROD. LAYS IN GROUND TIED 1.75 FT. DOWN ON ROD WHERE ENTERS GROUND. EXTENDS 0.3 FT. ABOVE GROUND POOR CONDIT ION	ST. HWY. 15-027
1113	121140.030	155640.718	-	-	-	7/31/2012	FD. 5/8" IRON REBAR WITH 1 1/4" YPC STAMPED "DEA INC." 0.1 FT. ABOVE GROUND GOOD CONDITION	ST. HWY. 15-027
1114	120299.011	155356.248	-	"IS"2760+37.95	125.11	7/31/2012	FD. 5/8" SMOOTH IRON ROD LEANS S.E. TIED TOP EDGE OF ROD FLUSH WITH GROUND FAIR CONDITION	ST. HWY. 15-014
5000	120776.411	154956.705	-	"OS"1384+66.00	-68.09	8/16/2018	SET 5/8 X 30" IRON REBAR WITH 2" ALUM. CAP STAMPED "ODOT RIGHT OF WAY 5000"	-
5001	120733.010	154963.310	-	"OS"1384+26.00	-50.00	8/16/2018	SET 5/8 X 30" IRON REBAR WITH 2" ALUM. CAP STAMPED "ODOT RIGHT OF WAY 5001"	-
W9R	121343.992	154796.700	-	"OS"1389+69.21	-375.54	7/25/2012	FD. 3 1/4" BRASS DISK STAMPED "US GEOLOGICAL SURVEY B.M. ELEVATION ABOVE SEA 501 FEET DATUM B W9 1903" SET IN CONCRETE 0.9 FT. BELOW GROUND GOOD CONDITION ODOT ORANGE CARSONITE WITNESS POST NEARBY	ST. HWY. 15-014
X200R	121268.407	155083.519	-	"OS"1389+73.96	-78.97	7/26/2012	FD. 1 1/2" BRASS DISK STAMPED "ODOT CONTROL 200" FLUSH IN AC GROUND. GOOD CONDITION IN PARKING AREA OF SHADY MAINTENANCE.	ST. HWY. 15-014
X204	119766.296	155602.302	559.97	"IS"2765+77.17	-106.35	8/28/2012	FD. 5/8" IRON REBAR WITH A 1 1/2" BRASS CAP STAMPED "ODOT CONTROL 204" EAST OF N.B. I-5 ON BANK, FLUSH WITH GROUND GOOD CONDITIO N	ST. HWY. 15-014

REGISTERED PROFESSIONAL LAND SURVEYOR
 Marshall R. Wagstaff
 OREGON
 JANUARY 9, 2001
 MARSHALL R. WAGSTAFF
 49476LS
 RENEWS: JUNE 30, 2020



OREGON DEPARTMENT OF TRANSPORTATION
 HORIZONTAL CONTROL, RECOVERY, RETRACEMENT & BOUNDARY MONUMENTATION MAP
 I-5: EXIT 119 & 120 INTERCHANGE IMPROVEMENTS
 PACIFIC HWY./COOS BAY - ROSEBURG HWY./OLD HWY. 99
 DOUGLAS COUNTY
 FILE: 17918RW.DGN :: CRR

ODOT REGION 3 TECH CENTER
 3500 NW STEWART PKWY.
 ROSEBURG, OR. 97470



JANUARY 10, 2019
 SCALE: 1" = 100'
 SHEET 3 OF 11