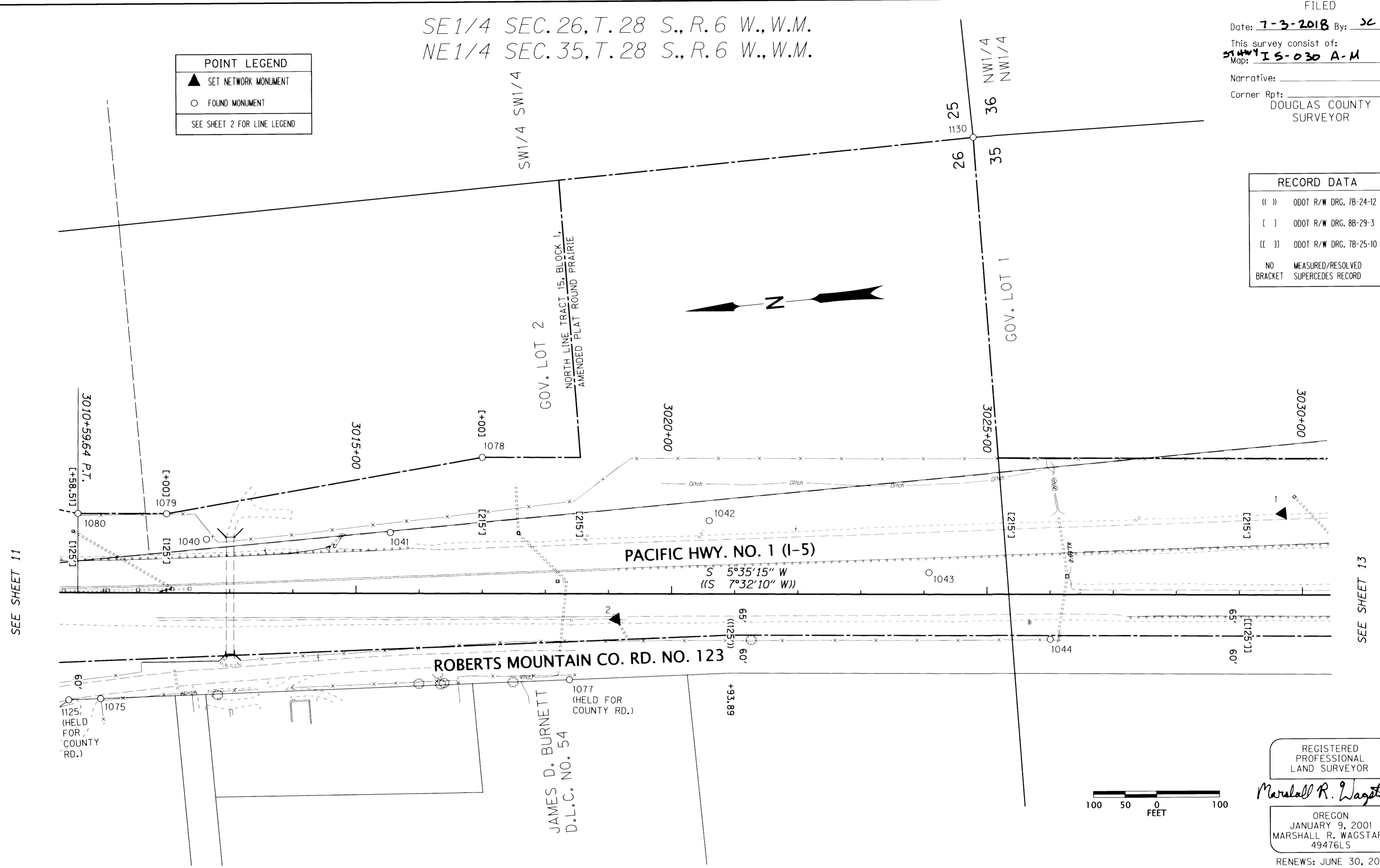


SE1/4 SEC. 26, T. 28 S., R. 6 W., W.M.
 NE1/4 SEC. 35, T. 28 S., R. 6 W., W.M.

POINT LEGEND	
▲	SET NETWORK MONUMENT
○	FOUND MONUMENT
SEE SHEET 2 FOR LINE LEGEND	

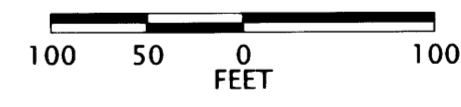
FILED
 Date: 7-3-2018 By: JC
 This survey consist of:
 Map: SHHWY I5-030 A-M
 Narrative:
 Corner Rpt: DOUGLAS COUNTY SURVEYOR

RECORD DATA	
(())	ODOT R/W DRG. 7B-24-12
[]	ODOT R/W DRG. 8B-29-3
[[]]	ODOT R/W DRG. 7B-25-10
NO BRACKET	MEASURED/RESOLVED SUPERCEDES RECORD



SEE SHEET 11

SEE SHEET 13



REGISTERED PROFESSIONAL LAND SURVEYOR
 Marshall R. Wagstaff
 OREGON
 JANUARY 9, 2001
 MARSHALL R. WAGSTAFF
 49476LS
 RENEWS: JUNE 30, 2018

MONUMENT TABLE							MONUMENTS 1000 - 1044 & 1087 ARE CONSTRUCTION CENTER LINE REFERENCE POINTS	
PT. NO.	OCRS NORTHING	OCRS EASTING	ELEVATION	STATION	OFFSET (- IS LEFT)	DATE	DESCRIPTION	REFERENCE
1	96034.251	154995.573	645.37	3029+68.18	-128.65	2/29/2016	SET 5/8" X 30" IRON REBAR WITH A 1-1/2" DIAMETER ALUMINUM CAP STAMPED "ODOT CONTROL 1"	-
2	97101.559	154930.382	660.01	3019+12.29	40.15	2/29/2016	SET 5/8" X 30" IRON REBAR WITH A 1-1/2" DIAMETER ALUMINUM CAP STAMPED "ODOT CONTROL 2"	-
1040	97735.540	155117.576	-	3012+63.09	-84.43	5/17/2016	FD. 5/8" IRON REBAR WITH 1-1/2" ALUMINUM CAP STAMPED "OREG STATE HWY DIV" 0.2' ABOVE SURFACE, GOOD CONDITION, PADDLE-BOARD NEARBY MARKED "SHRP"	8B-29-3
1041	97444.603	155100.661	-	3015+54.30	-95.92	5/17/2016	FD. 5/8" IRON ROD WITH 1-1/2" ALUMINUM CAP STAMPED "OREG STATE HWY DIV" 0.1' BELOW SURFACE, GOOD CONDITION, PADDLE-BOARD NEARBY MARKED "SHRP"	8B-29-3
1042	96939.846	155071.103	-	3020+59.53	-115.65	5/17/2016	FD. 5/8" IRON REBAR WITH 1-1/2" ALUMINUM CAP STAMPED "OREG STATE HWY DIV" 0.3' ABOVE SURFACE, GOOD CONDITION, PADDLE-BOARD NEARBY MARKED "SHRP"	8B-29-3
1043	96601.079	154956.164	-	3024+07.88	-34.24	5/16/2016	FD. 5/8" IRON REBAR WITH 1-1/2" ALUMINUM CAP STAMPED "OREG STATE HWY DIV" FLUSH WITH A/C IN PAVED MEDIAN GOOD CONDITION, NO PADDLE-BOARD	8B-29-3
1044	96419.661	154832.584	-	3026+00.47	71.09	5/16/2016	FD. 5/8" IRON REBAR WITH 1-1/2" ALUMINUM CAP STAMPED "OREG STATE HWY DIV" FLUSH WITH SURFACE, GOOD CONDITION, PADDLE-BOARD NEARBY MARKED "SHRP"	8B-29-3
1077	97184.293	154842.261	-	3018+38.53	135.91	5/31/2016	FD. 5/8" SMOOTH IRON ROD 0.3' ABOVE SURFACE, GOOD CONDITION, METAL POST NEARBY WITH NO PADDLE	UNRECORDED
1078	97288.281	155204.801	-	3016+99.74	-214.78	5/31/2016	FD. 5/8" IRON ROD WITH 1-1/2" ALUMINUM CAP STAMP ILLEGABLE 0.1' BELOW SURFACE, GOOD CONDITION, NO PADDLE	8B-29-3
1079	97794.681	155163.866	-	3011+99.73	-124.74	6/1/2016	FD. 5/8" IRON ROD WITH 1-1/2" ALUMINUM CAP STAMPED "OREG STATE HWY DEPT" 0.1' BELOW SURFACE, GOOD CONDITION, PADDLE-BOARD NEARBY MARKED "SHRW 3012+00 125 LT"	8B-29-3
1130	96465.474	155633.414	-	3024+76.90	-721.47	6/14/2016	FD. 1-1/4" IRON PIPE WITH A 2-1/2" BRASS CAP STAMPED "COUNTY SURVEYORS OFFICE 1961 T28S, R6W S26 S25 S35 S36" 1.2' ABOVE SURFACE, GOOD CONDITION	C.S. FILE 49/139

SI FEET
OREGON DEPARTMENT OF TRANSPORTATION
 HORIZONTAL CONTROL, RECOVERY AND RETRACEMENT MAP
 I-5: ROBERTS CREEK RD. - SOUTH UMPQUA RIVER
 PACIFIC HWY. NO. 1 (I-5) M.P. 114.8 TO 120.3
 DOUGLAS COUNTY
 CAD FILE: S_K18967_CRR_01.DGN
 FOR ODOT REGION 3
 3500 NW STEWART PKWY.
 ROSEBURG, OR. 97470
 JUNE 26, 2018
 SCALE: 1" = 100'
 SHEET 12 OF 13

ST HWY I5-030 L