

W1/2 SEC. 25, T. 28 S., R. 6 W., W.M.

FILED

Date: 7-3-2018 By: JC

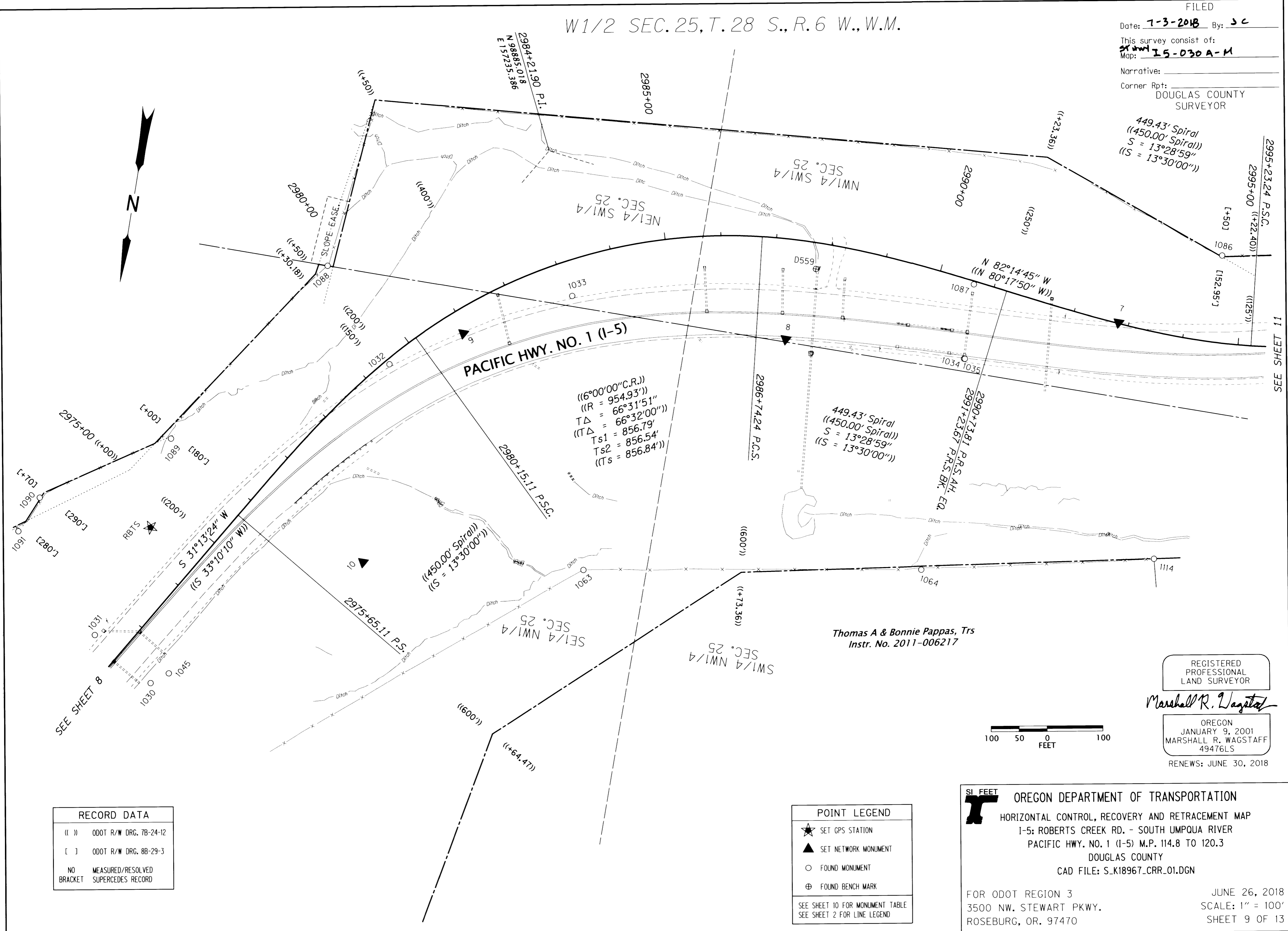
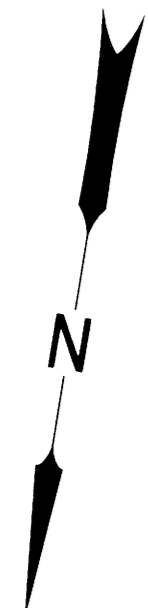
This survey consist of:

Map: 15-030A-M

Narrative:

Corner Rpt:
DOUGLAS COUNTY
SURVEYOR

449.43' Spiral
((450.00' Spiral))
S = 13°28'59"
((S = 13°30'00"))



SEE SHEET 11

SEE SHEET 8

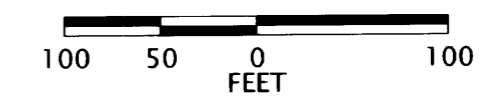
Thomas A & Bonnie Pappas, Trs
Instr. No. 2011-006217

REGISTERED
PROFESSIONAL
LAND SURVEYOR

Marshall R. Wagstaff

OREGON
JANUARY 9, 2001
MARSHALL R. WAGSTAFF
49476LS

RENEWS: JUNE 30, 2018



RECORD DATA	
(())	ODOT R/W DRG. 7B-24-12
[]	ODOT R/W DRG. 8B-29-3
NO	MEASURED/RESOLVED
BRACKET	SUPERCEDES RECORD

POINT LEGEND	
★	SET GPS STATION
▲	SET NETWORK MONUMENT
○	FOUND MONUMENT
⊕	FOUND BENCH MARK
SEE SHEET 10 FOR MONUMENT TABLE SEE SHEET 2 FOR LINE LEGEND	

SI FEET OREGON DEPARTMENT OF TRANSPORTATION
HORIZONTAL CONTROL, RECOVERY AND RETRACEMENT MAP
I-5: ROBERTS CREEK RD. - SOUTH UMPQUA RIVER
PACIFIC HWY. NO. 1 (I-5) M.P. 114.8 TO 120.3
DOUGLAS COUNTY
CAD FILE: S.K18967_CRR.01.DGN

FOR ODOT REGION 3
3500 NW. STEWART PKWY.
ROSEBURG, OR. 97470

JUNE 26, 2018
SCALE: 1" = 100'
SHEET 9 OF 13