

S1/2 SEC. 24, T. 28 S., R. 6 W., W.M.  
 N1/2 SEC. 25, T. 28 S., R. 6 W., W.M.

FILED

Date: 1-3-2018 By: JC

This survey consist of:

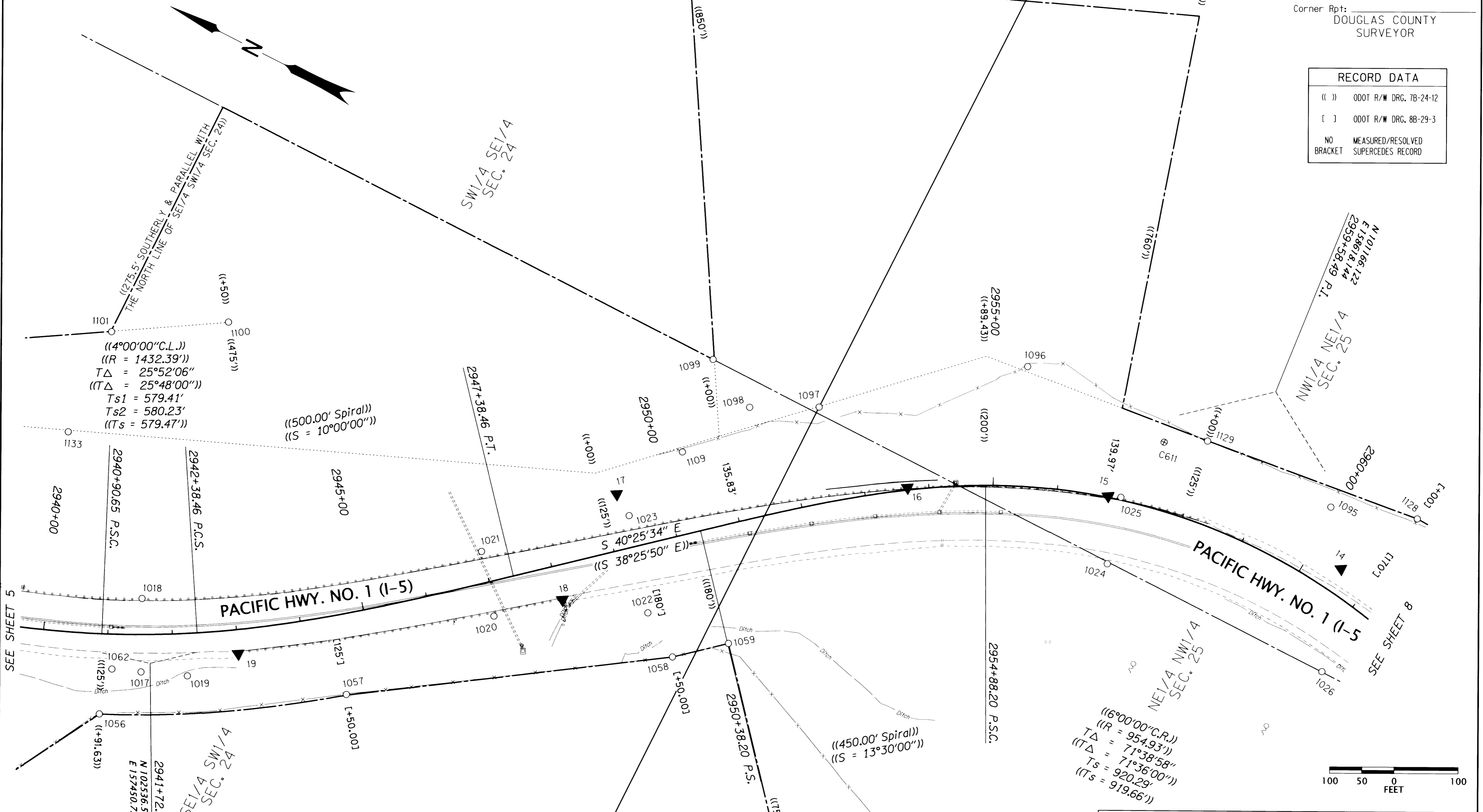
Map: IS-030 A-H

Narrative: \_\_\_\_\_

Corner Rpt: \_\_\_\_\_

DOUGLAS COUNTY  
 SURVEYOR

RECORD DATA	
( ( ) )	ODOT R/W DRG. 7B-24-12
[ ]	ODOT R/W DRG. 8B-29-3
NO	MEASURED/RESOLVED
BRACKET	SUPERCEDES RECORD



SEE SHEET 5

SEE SHEET 8

POINT LEGEND	
▲	SET NETWORK MONUMENT
○	FOUND MONUMENT
⊕	FOUND BENCH MARK
SEE SHEET 7 FOR MONUMENT TABLE	
SEE SHEET 2 FOR LINE LEGEND	

Thomas A & Bonnie Pappas, Trs  
 Instr. No. 2011-006217

REGISTERED  
 PROFESSIONAL  
 LAND SURVEYOR  
*Marshall R. Wagstaff*  
 OREGON  
 JANUARY 9, 2001  
 MARSHALL R. WAGSTAFF  
 49476LS  
 RENEWS: JUNE 30, 2018

SI FEET  
**T** OREGON DEPARTMENT OF TRANSPORTATION  
 HORIZONTAL CONTROL, RECOVERY AND RETRACEMENT MAP  
 I-5: ROBERTS CREEK RD. - SOUTH UMPQUA RIVER  
 PACIFIC HWY. NO. 1 (I-5) M.P. 114.8 TO 120.3  
 DOUGLAS COUNTY  
 CAD FILE: S.K18967\_CRR.01.DGN  
 FOR ODOT REGION 3  
 3500 NW. STEWART PKWY.  
 ROSEBURG, OR. 97470  
 JUNE 26, 2018  
 SCALE: 1" = 100'  
 SHEET 6 OF 13

