

SEC. 1, 2, 11, 12, 13, 14, 23, 24, 25, 26 & 35, T. 28 S., R. 6 W., W.M.

FILED

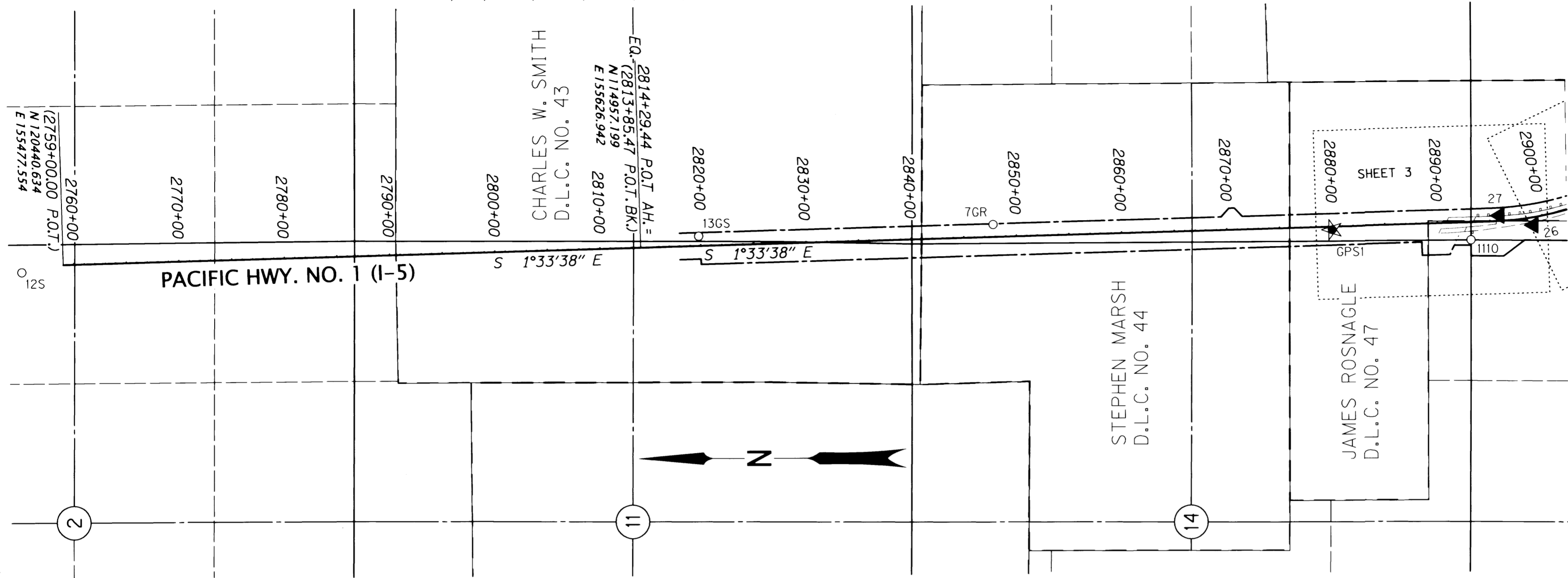
Date: 7-3-2018 By: X

This survey consist of:

ST HWY 15-030 A-M

Narrative:

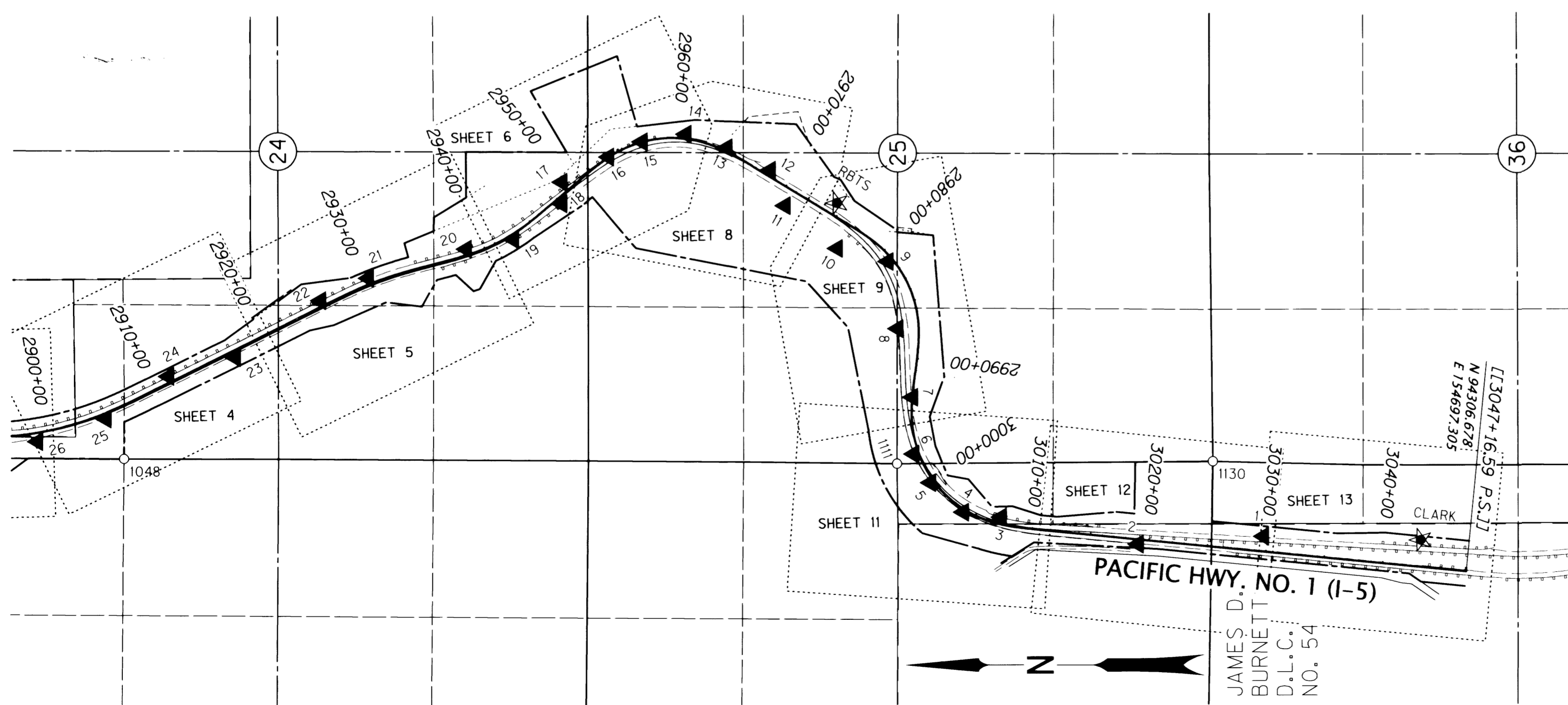
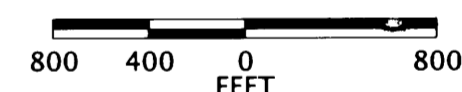
Corner Rpt: DOUGLAS COUNTY SURVEYOR



RECORD DATA	
()	ODOT R/W DRG. 7B-23-1
[]	ODOT R/W DRG. 7B-25-10
NO	MEASURED/RESOLVED
BRACKET	SUPERCEDES RECORD

POINT LEGEND	
★	SET GPS STATION
▲	SET NETWORK MONUMENT
○	FOUND MONUMENT
SEE SHEET 2 FOR LINE LEGEND	

MONUMENT TABLE							FOR MONUMENTS NOT LISTED SEE INDIVIDUAL SHEETS	
PT. NO.	OCRS NORTHING	OCRS EASTING	ELEVATION	STATION	OFFSET (- IS LEFT)	DATE	DESCRIPTION	REFERENCE
12S	120832.835	155403.843	-	2994+48.21	21810.56	6/3/2016	FD. 5/8" IRON ROD WITH 1-1/2" BRASS CAP STAMPED "ODOT CONTROL 12" FLUSH WITH SURFACE, GOOD CONDITION, CARSONITE POST NEARBY, IN THE AREA BETWEEN THE FREEWAY AND EXIT 120 SOUTHBOUND OFF RAMP, BEHIND THE GUARDRAIL 22' NORTHERLY OF THE SOUTHERLY END OF THE GUARDRAIL ON THE FREEWAY SIDE 4' FROM EDGE OF PAVEMENT	UNRECORDED
13GS	114406.719	155732.164	-	2819+82.58	-90.19	6/3/2016	FD. 5/8" IRON ROD WITH 1-1/2" BRASS CAP STAMPED "ODOT CONTROL 13" SET IN CONCRETE. FLUSH WITH SURFACE, GOOD CONDITION, CARSONITE POST NEARBY	ST. HWY 15-006
7GR	111609.134	155834.668	-	2847+81.92	-116.47	6/3/2016	FD. 1/2" SQUARE IRON ROD WITH 1-1/2" ALUMINUM CAP STAMPED "ODOT HORIZ CONTROL 7" 0.1' ABOVE SURFACE, GOOD CONDITION, CARSONITE POST NEARBY MARKED "GARDEN VALLEY-ROBERTS CREEK, POINT 7"	ST. HWY 15-006



REGISTERED PROFESSIONAL LAND SURVEYOR
Marshall R. Wagstaff
 OREGON
 JANUARY 9, 2001
 MARSHALL R. WAGSTAFF
 49476LS
 RENEWS: JUNE 30, 2018

SI FEET
T OREGON DEPARTMENT OF TRANSPORTATION
 HORIZONTAL CONTROL, RECOVERY AND RETRACEMENT MAP
 I-5: ROBERTS CREEK RD. - SOUTH UMPQUA RIVER
 PACIFIC HWY. NO. 1 (I-5) M.P. 114.8 TO 120.3
 DOUGLAS COUNTY
 CAD FILE: S_K18967_CRR_01.DGN
 FOR ODOT REGION 3
 3500 NW STEWART PKWY.
 ROSEBURG, OR. 97470
 JUNE 26, 2018
 SCALE: 1" = 800'
 SHEET 1 OF 13

ST HWY 15-030 A