

SEC. 1, 2, 11, 12, 13, 14, 23, 24, 25, 26 & 35, T. 28 S., R. 6 W., W.M.

FILED

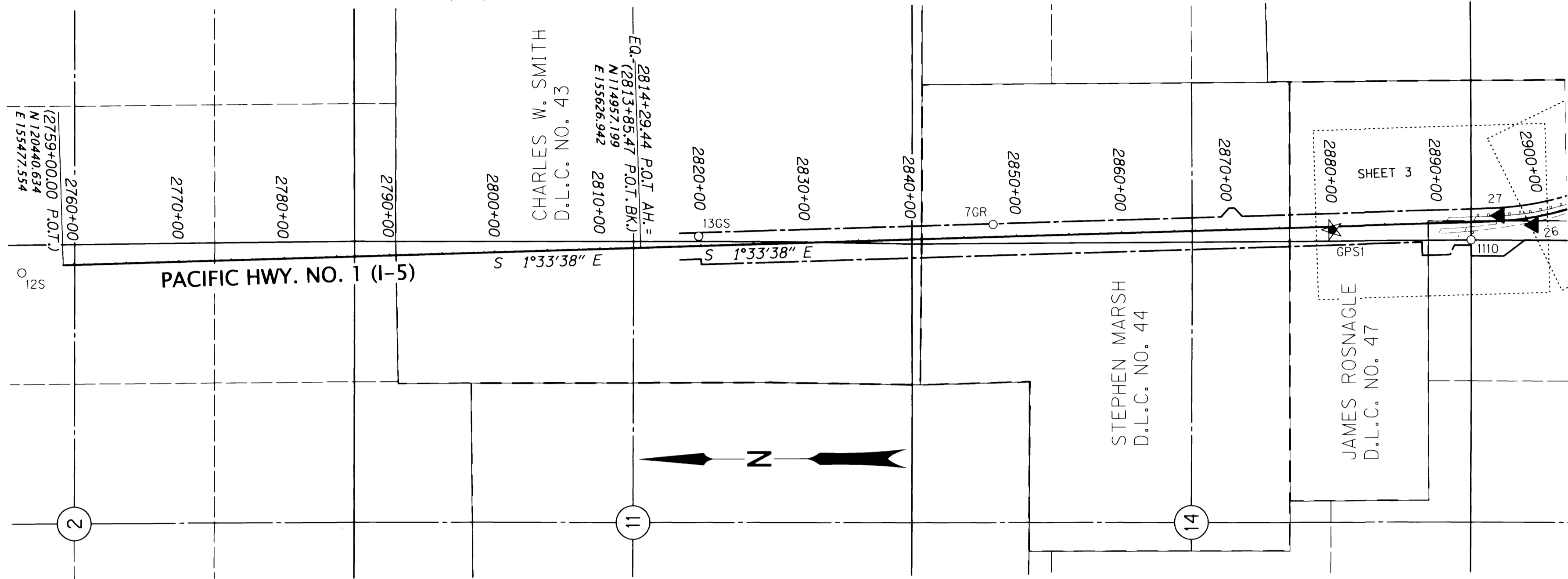
Date: 7-3-2018 By: X

This survey consist of:

ST HWY 15-030 A-M

Narrative:

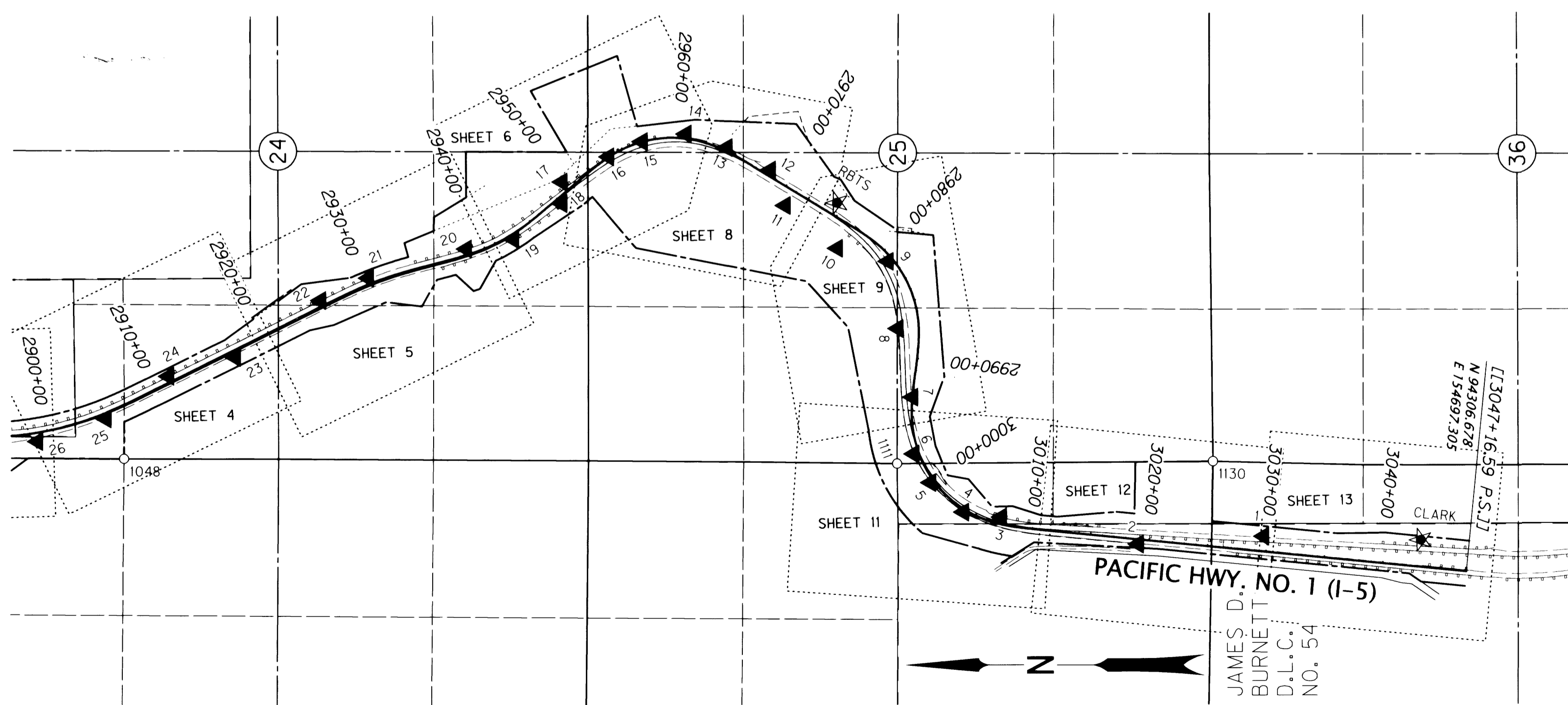
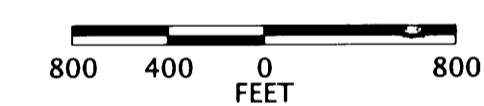
Corner Rpt: DOUGLAS COUNTY SURVEYOR



RECORD DATA	
()	ODOT R/W DRG. 7B-23-1
[]	ODOT R/W DRG. 7B-25-10
NO	MEASURED/RESOLVED
BRACKET	SUPERCEDES RECORD

POINT LEGEND	
★	SET GPS STATION
▲	SET NETWORK MONUMENT
○	FOUND MONUMENT
SEE SHEET 2 FOR LINE LEGEND	

MONUMENT TABLE							FOR MONUMENTS NOT LISTED SEE INDIVIDUAL SHEETS	
PT. NO.	OCRS NORTHING	OCRS EASTING	ELEVATION	STATION	OFFSET (- IS LEFT)	DATE	DESCRIPTION	REFERENCE
12S	120832.835	155403.843	-	2994+48.21	21810.56	6/3/2016	FD. 5/8" IRON ROD WITH 1-1/2" BRASS CAP STAMPED "ODOT CONTROL 12" FLUSH WITH SURFACE, GOOD CONDITION, CARSONITE POST NEARBY, IN THE AREA BETWEEN THE FREEWAY AND EXIT 120 SOUTHBOUND OFF RAMP, BEHIND THE GUARDRAIL 22' NORTHERLY OF THE SOUTHERLY END OF THE GUARDRAIL ON THE FREEWAY SIDE 4' FROM EDGE OF PAVEMENT	UNRECORDED
13GS	114406.719	155732.164	-	2819+82.58	-90.19	6/3/2016	FD. 5/8" IRON ROD WITH 1-1/2 BRASS CAP STAMPED "ODOT CONTROL 13" SET IN CONCRETE. FLUSH WITH SURFACE, GOOD CONDITION, CARSONITE POST NEARBY	ST. HWY 15-006
7GR	111609.134	155834.668	-	2847+81.92	-116.47	6/3/2016	FD. 1/2" SQUARE IRON ROD WITH 1-1/2" ALUMINUM CAP STAMPED "ODOT HORIZ CONTROL 7" 0.1' ABOVE SURFACE, GOOD CONDITION, CARSONITE POST NEARBY MARKED "GARDEN VALLEY-ROBERTS CREEK, POINT 7"	ST. HWY 15-006



REGISTERED PROFESSIONAL LAND SURVEYOR
Marshall R. Wagstaff
 OREGON
 JANUARY 9, 2001
 MARSHALL R. WAGSTAFF
 49476LS
 RENEWS: JUNE 30, 2018

SI FEET
T OREGON DEPARTMENT OF TRANSPORTATION
 HORIZONTAL CONTROL, RECOVERY AND RETRACEMENT MAP
 I-5: ROBERTS CREEK RD. - SOUTH UMPQUA RIVER
 PACIFIC HWY. NO. 1 (I-5) M.P. 114.8 TO 120.3
 DOUGLAS COUNTY
 CAD FILE: S_K18967_CRR_01.DGN
 FOR ODOT REGION 3
 3500 NW. STEWART PKWY.
 ROSEBURG, OR. 97470
 JUNE 26, 2018
 SCALE: 1" = 800'
 SHEET 1 OF 13

ST HWY 15-030 A

NARRATIVE

PURPOSE

THE PURPOSE OF THIS SURVEY WAS TO PROVIDE TOPOGRAPHIC MAPPING; A DIGITAL TERRAIN MODEL; AND A CONTROL, RECOVERY, RETRACEMENT MAP FOR A PROJECT NAMED "I-5: ROBERTS CREEK RD. SOUTH UMPQUA RIVER". ODOT SURVEY CREWS COMPLETED FIELD WORK BETWEEN FEBRUARY 22, 2016 AND JUNE 20, 2016.

COORDINATES & BASIS OF BEARING

THE BEARINGS ARE BASED ON THE OREGON COORDINATE REFERENCE SYSTEM (OCRS) COTTAGE GROVE - CANYONVILLE, NAD83 (2011) EPOCH 2010. THE OCRS COORDINATES ARE EQUAL TO OR CLOSE TO TRUE GROUND DISTANCES. ALL COORDINATES ARE IN INTERNATIONAL FEET.

HORIZONTAL CONTROL

A RAPID STATIC GPS NETWORK WAS COMPLETED AND USED AS PRIMARY CONTROL FOR THE PROJECT. 3 POINTS WERE SET NAMED "GPS1", "RBTS" AND "CLARK". THESE POINTS WERE DOUBLE OCCUPIED FOR MINIMUM OF 4 HOURS PER OCCUPATION. COORDINATES WERE CALCULATED ON THESE CONTROL POINTS BY HOLDING OREGON REAL TIME NETWORK (ORGN) STATIONS P363, R5BG, AND SUHS AND USING RINEX FILES DOWNLOADED FROM THESE STATIONS. ADDITIONAL CONTROL POINTS WERE FOUND AND SET AND A TERRESTRIAL NETWORK WAS COMPLETED HOLDING "GPS1", "RBTS" AND "CLARK".

HORIZONTAL CONTROL EQUIPMENT

A LEICA MSS0 MULTI STATION WAS USED FOR GATHERING TOPOGRAPHIC DATA AND RUNNING THE CONTROL NETWORK. IT HAS THE FOLLOWING ACCURACY: STANDARD ANGULAR ERROR OF +/- 1 SECOND, STANDARD DISTANCE ERROR OF +/- 1 MM, + 1.5 PPM.

A LEICA GX1230 DUAL FREQUENCY GPS AND LEICA GS14 DUAL FREQUENCY GPS RECEIVERS WERE USED FOR GPS OBSERVATIONS. THEY HAVE THE FOLLOWING ACCURACY: PHASED DIFFERENTIAL STATIC METHOD HORIZONTAL ERROR OF 5 MM + 0.5 PPM, AND A VERTICAL ERROR OF 10 MM, + 0.5 PPM; PHASED DIFFERENTIAL RTK METHOD HORIZONTAL ERROR OF 10 MM + 1 PPM, AND A VERTICAL ERROR OF 20 MM, + 1 PPM.

VERTICAL CONTROL

POINTS GPS1, "RBTS" AND "CLARK" AND THEIR NAVD 88 DATUM ELEVATIONS DERIVED BY LONG OCCUPATION RAPID STATIC GPS METHODS USING GEOID 12A WERE HELD FOR VERTICAL CONTROL. AS AN ELEVATION CHECK REFERENCE POINTS NEAR BENCH MARKS J554 AND F747 WERE SIMULTANEOUS OCCUPIED DURING PRIMARY GPS CONTROL POINT OCCUPATIONS. WE THEN USED A SINGLE TURN LEVEL CIRCUIT FROM THE BENCH MARK TO THE REFERENCE POINT AND BACK. ELEVATIONS CHECKED WITHIN 0.04' ON THE REFERENCE POINT FOR J554 AND WITHIN 0.07' FOR THE REFERENCE POINT FOR F747. LEVEL CIRCUITS WERE RUN TO ESTABLISH ELEVATIONS ON CONTROL.

VERTICAL CONTROL EQUIPMENT

A LEICA DNA10 DIGITAL LEVEL AND A LEICA GBNL4C ALUMINUM LEVEL ROD WAS USED TO COMPLETE THE LEVEL CIRCUITS. THIS INSTRUMENT HAS THE FOLLOWING STANDARD DEVIATION OF 1.5MM IN A 1 KILOMETER DOUBLE RUN LEVEL CIRCUIT.

RIGHT OF WAY RETRACEMENT

THE PACIFIC HIGHWAY NUMBER 1 (INTERSTATE 5) RIGHT OF WAY WAS RESOLVED USING ODOT RIGHT OF WAY DRAWINGS (DRG.) 7B-23-1, 7B-24-12, 8B-29-3, AND 7B-25-10. ALL OF THESE RIGHT OF DRAWINGS SHARE THE SAME BASIS OF BEARING AND WHERE THE MAPS OVERLAP THE RIGHT OF WAY CENTER LINE ALIGNMENT DATA IS IDENTICAL. THE FIRST TANGENT, LYING BETWEEN STATIONS 2759+00 AND 2893+21.25 P.S., WAS MOVED AND ROTATED IN FROM AN OLDER ODOT PROJECT NAMED "I-5: EXITS 119 & 120 INTERCHANGE IMPROVEMENTS", KEY NUMBER 17918, WHICH WILL BE FILED IN THE NEAR FUTURE. THE OLD PROJECT HAD A DIFFERENT DATUM REALIZATION AND WAS TRANSFORMED TO THIS PROJECTS DATUM BY MOVING IT TO MONUMENT "7GR" AND ROTATING TO MONUMENT "12S". THE DIFFERENCE IN DISTANCE BETWEEN "7GR" AND "12S" COMPARING SURVEYS WAS LESS THAN 0.02'. THE NEXT TANGENT, LYING BETWEEN STATIONS 2909+57.77 P.T. AND 2926+07.29 P.S., HELD THE PROPORTIONATE RECORD DISTANCE BETWEEN MONUMENTS 1049 AND 1108 AND THE RECORD DISTANCE FROM MONUMENT 1107. THE FIRST CURVE BETWEEN THE TANGENTS HELD THE RECORD DEGREE OF CURVE AND SPIRAL LENGTHS. THE NEXT TANGENT, LYING AT STATION 2935+92.86 P.R.S., HELD THE RECORD TOTAL DELTA FROM THE BACK TANGENT AND THE RECORD DISTANCE FROM MONUMENT 1053. THE CURVE HELD THE RECORD DEGREE OF CURVE AND BACK SPIRAL BUT, THE FORWARD SPIRAL LENGTH HAD TO BE SHORTENED. THE NEXT TANGENT, LYING BETWEEN STATIONS 2947+38.45 P.T. AND 2950+38.20 P.S., HELD THE RECORD DISTANCES FROM MONUMENTS 1058 AND 1059. THE CURVE HELD THE RECORD DEGREE OF CURVE AND FORWARD SPIRAL LENGTH BUT, THE BACK SPIRAL LENGTH HAD TO BE SHORTENED. THE NEXT TANGENT, LYING 2966+82.35 P.T. AND 2975+65.11 P.S., HELD THE PROPORTIONATE RECORD DISTANCE BETWEEN MONUMENTS 1061 AND 1092 AND THE RECORD DISTANCE FROM MONUMENT 1090. THE CURVE HELD THE RECORD DEGREE OF CURVE AND SPIRAL LENGTHS. THE NEXT TANGENT, LYING AT 2991+23.67 P.R.S., HELD THE RECORD TOTAL DELTA FROM THE FORWARD TANGENT AND THE RECORD DISTANCE FROM MONUMENT 1064. THE CURVE HELD THE RECORD DEGREE OF CURVE AND BACK SPIRAL LENGTH BUT, THE FORWARD SPIRAL LENGTH HAD TO BE SHORTENED. THE LAST TANGENT, LYING BETWEEN STATIONS 3010+59.64 P.T. AND 3047+16.59 P.S., HELD THE RECORD DISTANCE FROM MONUMENT 1080 AND THE PROPORTIONATE DISTANCE BETWEEN MONUMENTS 1071 AND 1072. THE LAST CURVE HELD THE RECORD TOTAL DELTA AND THE FORWARD SPIRAL LENGTH BUT, THE BACK SPIRAL HAD TO BE SHORTENED. RECORD STATION OF 2950+39.43 WAS HELD ON THE INTERSECTION OF THE CENTER LINE AND A LINE BETWEEN MONUMENTS 1059 AND 1109 BETWEEN STATIONS 2814+29.44 P.O.T. AHEAD AND 2966+82.35 P.T. BACK. RECORD STATION OF 2991+23.36 WAS HELD ON MONUMENT 1064 BETWEEN STATIONS 2966+74.71 P.O.T. AHEAD AND 2991+23.67 P.R.S. BACK. RECORD STATION OF 3047+16.59 WAS HELD ON THE INTERSECTION OF THE CENTER LINE AND A LINE BETWEEN MONUMENTS 1071 AND 1072 BETWEEN STATIONS 2990+73.81 P.R.S. AHEAD AND 3047+16.59 P.S.

PLEASE NOTE:

CONTROL MONUMENTS SHOWN ON THIS SURVEY DO NOT REPRESENT PROPERTY LINES OR RIGHT OF WAY LINES. THEY ARE INTENDED TO PERPETUATE THE ALIGNMENTS AND RIGHT OF WAY DEVELOPED FOR THIS PROJECT IN CONFORMANCE WITH ORS 209, SECTION 155.

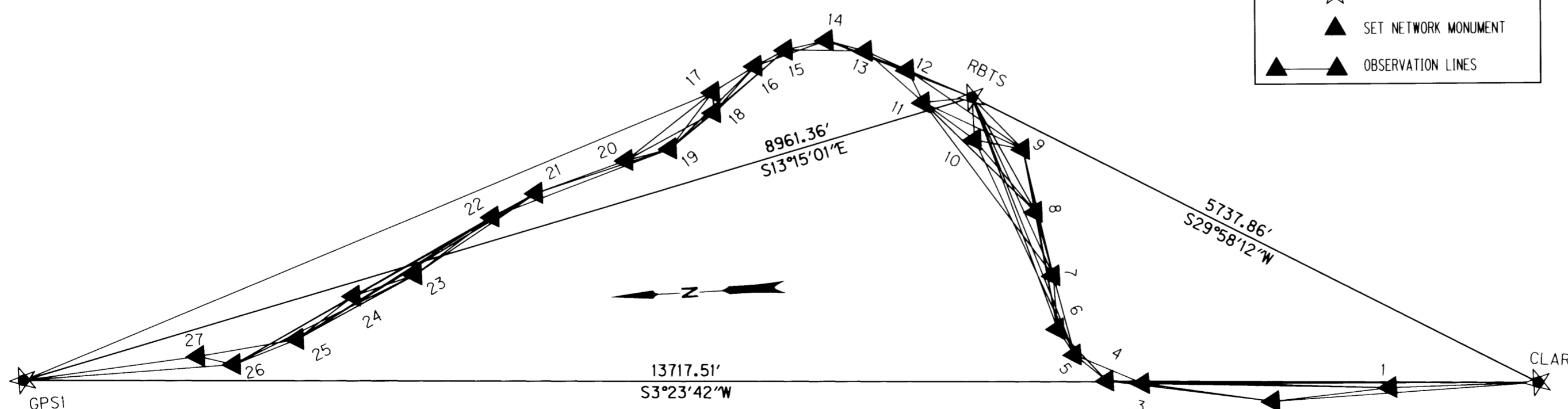
NETWORK OBSERVATIONS	
OCCUPIED	MEASURED
CLARK	1,2,3
1	2,3,4
2	1,3,4
3	1,2,4,5
4	1,2,3,5,6
5	4,6,7,8, RBTS,10
6	5,7,8,9, RBTS
7	6,7, RBTS,11
8	6,9,10, RBTS,11
9	7,8,10,11, RBTS,12
RBTS	6,7,8,9,10,11,12,14
10	8,9,11, RBTS
11	8,9,10, RBTS,12,13
12	RBTS,11,13,14
13	12,14,15
14	12,13,15,16
15	14,16,18,19
16	15,17,18,19
17	18,19,20, GPS1
18	16,17,19,20
19	16,17,18,20,21,22
20	17,19,21
21	20,22,23,24,25,26
22	21,23,24,25,26
24	22,23,25,26
23	22,24,25,26
25	23,24,26,27
26	23,24,25,27, GPS1
27	26, GPS1
GPS1	26,27

REGISTERED PROFESSIONAL LAND SURVEYOR
Marshall R. Wagstaff
 OREGON JANUARY 9, 2001
 MARSHALL R. WAGSTAFF
 49476LS
 RENEWS: JUNE 30, 2018

BOUNDARY LINE LEGEND

- EXISTING HIGHWAY ACCESS CONTROL / RIGHT OF WAY
- EXISTING STREET RIGHT OF WAY
- EXISTING EASEMENT
- EXISTING PROPERTY
- DONATION LAND CLAIM (THIS SIDE)
- DONATION LAND CLAIM (BOTH SIDES)
- SECTION
- 1/4 SECTION
- 1/16 SECTION OR GOVERNMENT LOT

POINT LEGEND	
	SET GPS STATION
	SET NETWORK MONUMENT
	OBSERVATION LINES



BASIS OF BEARING AND CONTROL NETWORK SCHEMATIC
 NOT TO SCALE

SI FEET
OREGON DEPARTMENT OF TRANSPORTATION
 HORIZONTAL CONTROL, RECOVERY AND RETRACEMENT MAP
 I-5: ROBERTS CREEK RD. - SOUTH UMPQUA RIVER
 PACIFIC HWY. NO. 1 (I-5) M.P. 114.8 TO 120.3
 DOUGLAS COUNTY
 CAD FILE: S_K18967_CRR_01.DGN

FOR ODOT REGION 3
 3500 NW. STEWART PKWY.
 ROSEBURG, OR. 97470

JUNE 26, 2018
 NOT TO SCALE
 SHEET 2 OF 13

SW1/4 SEC. 13, SE1/4 SEC. 14, NE1/4 SEC. 23 & NW1/4 SEC. 24, T. 28 S., R. 6 W., W.M.

FILED

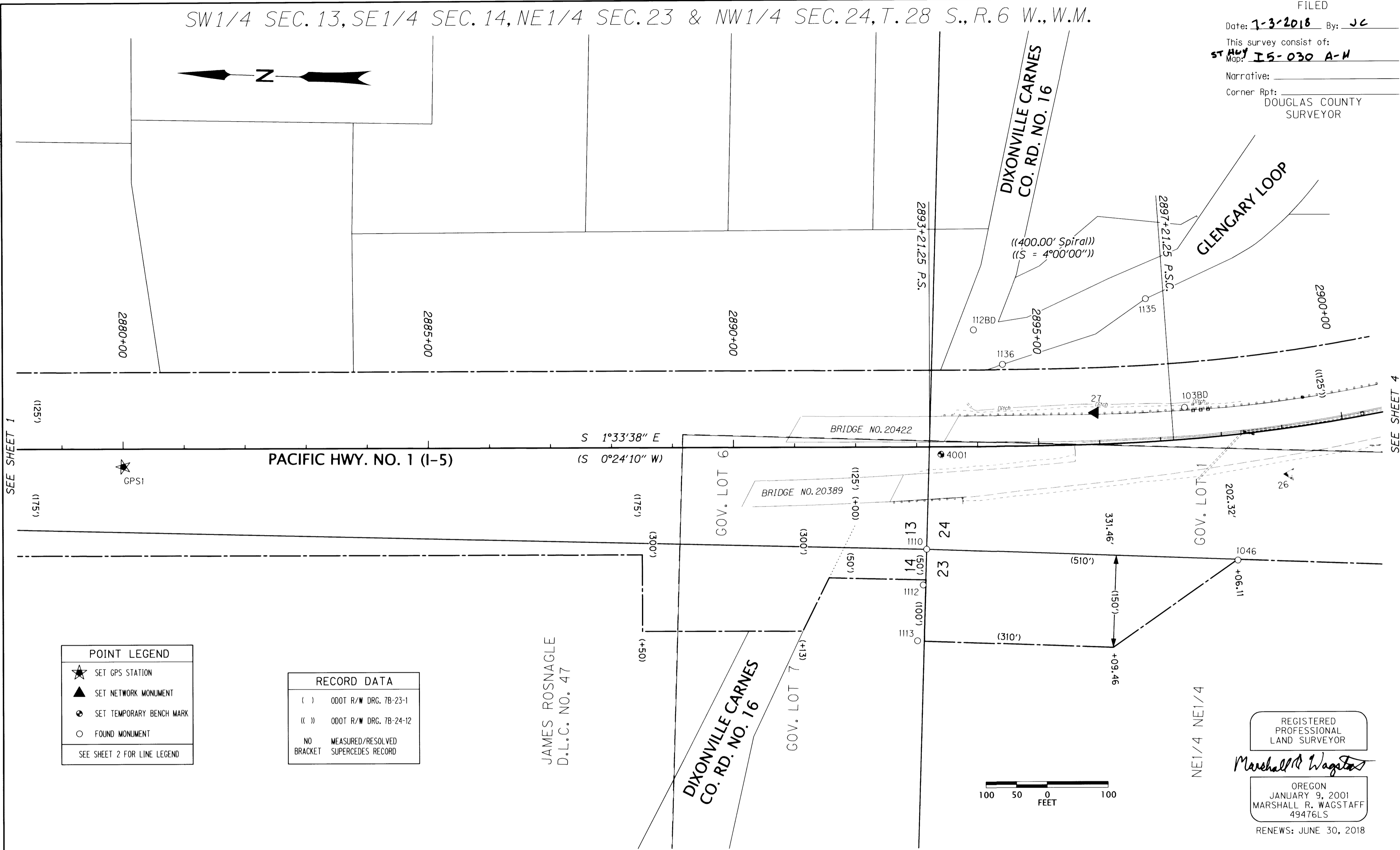
Date: 7-3-2018 By: JC

This survey consist of:

ST HWY I5-030 A-H

Narrative:

Corner Rpt: DOUGLAS COUNTY SURVEYOR



SEE SHEET 1

SEE SHEET 4

POINT LEGEND

- ★ SET GPS STATION
- ▲ SET NETWORK MONUMENT
- SET TEMPORARY BENCH MARK
- FOUND MONUMENT

SEE SHEET 2 FOR LINE LEGEND

RECORD DATA

() ODOT R/W DRG. 7B-23-1
 () ODOT R/W DRG. 7B-24-12

NO MEASURED/RESOLVED
 BRACKET SUPERCEDES RECORD

REGISTERED PROFESSIONAL LAND SURVEYOR
Marshall R. Wagstaff
 OREGON
 JANUARY 9, 2001
 MARSHALL R. WAGSTAFF
 49476LS
 RENEWS: JUNE 30, 2018



MONUMENT TABLE

PT. NO.	OCRS NORTHING	OCRS EASTING	ELEVATION	STATION	OFFSET (- IS LEFT)	DATE	DESCRIPTION	REFERENCE
26	106476.290	155811.566	616.97	2899+03.44	74.86	2/29/2016	SET 5/8" X 30" IRON REBAR WITH A 1-1/2" DIAMETER ALUMINUM CAP STAMPED "ODOT CONTROL 26"	-
27	106798.775	155903.492	595.85	2895+94.07	-51.34	2/29/2016	SET 5/8" X 30" IRON REBAR WITH A 1-1/2" DIAMETER ALUMINUM CAP STAMPED "ODOT CONTROL 27"	-
1046	106558.597	155669.536	-	2898+06.36	203.65	5/19/2016	FD. 5/8" SMOOTH IRON ROD, 0.2' ABOVE SURFACE, GOOD CONDITION	7B-24-12
1110	107069.016	155674.846	-	2893+16.00	166.94	6/7/2016	FD. 3/4" IRON ROD PROTRUDES 0.15' ABOVE 18"X18" CONCRETE BASE GOOD CONDITION, T28S R6W SECTIONS 13,14,23, AND 24	CS 41/345
1112	107073.240	155616.306	-	2893+10.19	225.34	6/14/2016	FD. 5/8" SMOOTH IRON ROD, 0.3' ABOVE SURFACE, GOOD CONDITION, ON SECTION LINE	7B-24-12
1113	107080.281	155525.224	-	2893+00.67	316.20	6/14/2016	FD. 5/8" SMOOTH IRON ROD, 0.2' ABOVE SURFACE, GOOD CONDITION, ON SECTION LINE	7B-24-12
1135	106720.756	156091.629	-	2896+89.40	-233.36	6/16/2016	FD. 5/8" IRON REBAR WITH 1-1/2" ALUMINUM CAP STAMPED "DOUGLAS CO. RD. DPT. R-W 30" TIED PUNCH. FLUSH WITH SURFACE, GOOD CONDITION, PADDLEBOARD NEARBY MARKED "CRRW 100+00 30"	ST. HWY 15-018C
1136	106952.267	155978.673	-	2894+41.83	-133.35	6/20/2016	FD. 5/8" IRON REBAR WITH 1-1/2" ALUMINUM CAP STAMPED "DOUGLAS CO. RD. DPT. R-W 30" TIED PUNCH. 0.2' ABOVE SURFACE, GOOD CONDITION, PADDLEBOARD NEARBY MARKED "CRRW PT 97+42.33 30"	ST. HWY 15-018C
4001	107049.668	155830.311	586.41	2893+39.57	12.06	3/2/2016	SET 1" COPPER DISK SET IN TOP OF TYPE "D" INLET	-
103BD	106652.358	155915.838	-	2897+43.34	-51.84	6/20/2016	FD. 5/8" IRON ROD WITH 1-1/4" OPC. STAMPED "BLUEDOT CONTROL" FLUSH WITH SURFACE, GOOD CONDITION	ST. HWY 15-018C
112BD	107001.169	156034.108	-	2893+94.05	-190.29	6/20/2016	FD. 5/8" IRON ROD WITH 1-1/4" OPC. STAMPED "BLUEDOT CONTROL" FLUSH WITH SURFACE, GOOD CONDITION	ST. HWY 15-018C
GPS1	108387.625	155776.775	576.85	2880+00.66	29.13	2/29/2016	SET 1" DIAMETER COPPER DISK STAMPED "ODOT GPS1" IN NE. CORNER OF CONCRETE APRON AROUND STORM INLET	-

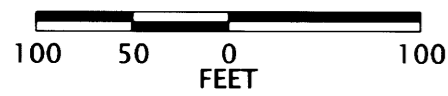
SI FEET
OREGON DEPARTMENT OF TRANSPORTATION
 HORIZONTAL CONTROL, RECOVERY AND RETRACEMENT MAP
 I-5: ROBERTS CREEK RD. - SOUTH UMPQUA RIVER
 PACIFIC HWY. NO. 1 (I-5) M.P. 114.8 TO 120.3
 DOUGLAS COUNTY
 CAD FILE: S_K18967_CRR_01.DGN

FOR ODOT REGION 3
 3500 NW, STEWART PKWY.
 ROSEBURG, OR. 97470

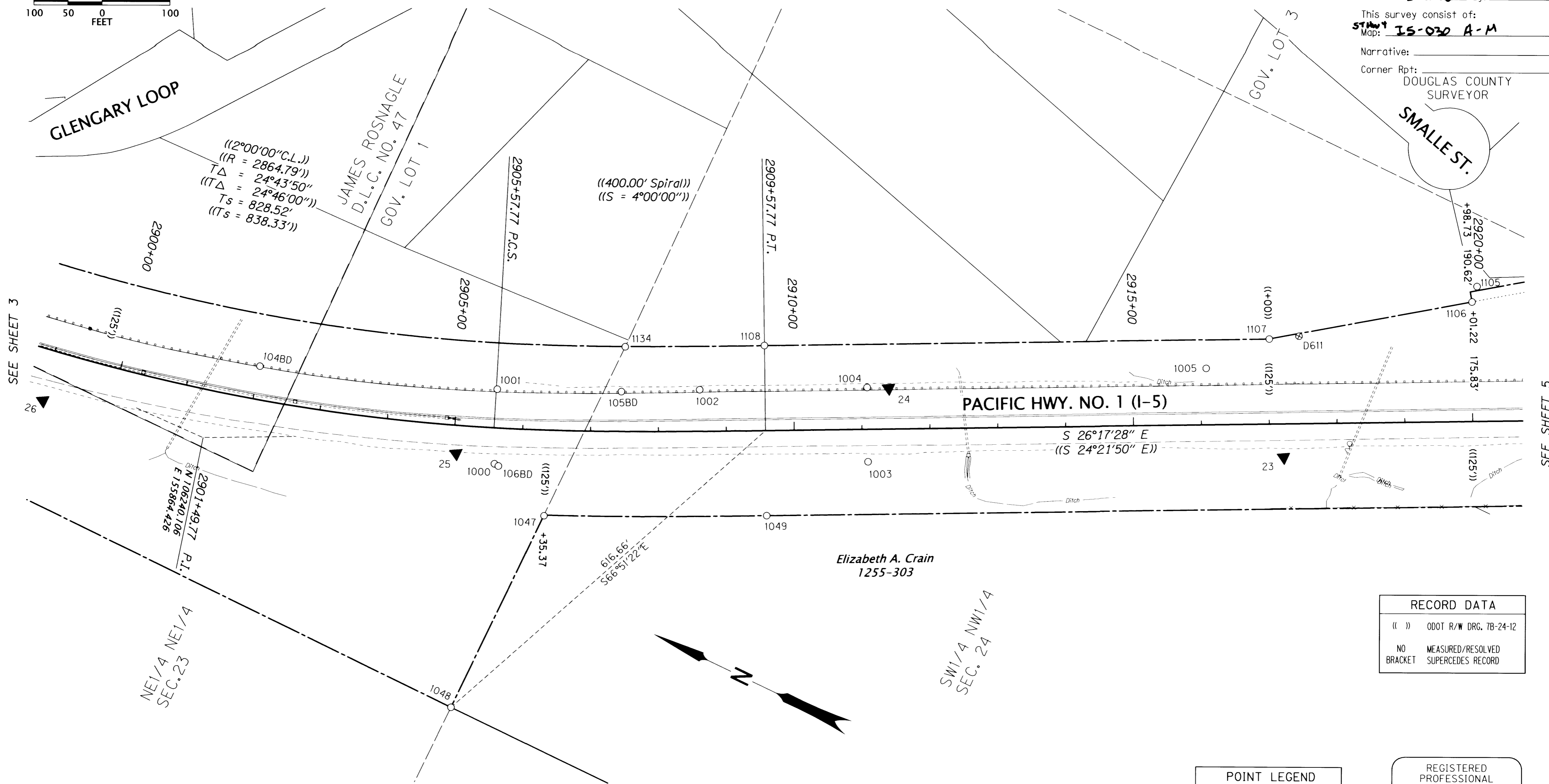
JUNE 26, 2018
 SCALE: 1" = 100'
 SHEET 3 OF 13

ST HWY I5-030 C

NE1/4 SEC.23 & NW1/4 SEC.24, T.28 S., R.6 W., W.M.



FILED
 Date: 7-3-2018 By: JC
 This survey consist of:
 Map: IS-030 A-M
 Narrative:
 Corner Rpt:
 DOUGLAS COUNTY SURVEYOR



SEE SHEET 3

SEE SHEET 5

RECORD DATA	
(())	ODOT R/W DRG. 7B-24-12
NO	MEASURED/RESOLVED
BRACKET	SUPERCEDES RECORD

MONUMENT TABLE

PT. NO.	OCRS NORTHING	OCRS EASTING	ELEVATION	STATION	OFFSET (- IS LEFT)	DATE	DESCRIPTION	REFERENCE
23	104791.485	156525.314	722.99	2917+20.75	49.12	2/29/2016	SET 5/8" X 30" IRON REBAR WITH A 1-1/2" DIAMETER ALUMINUM CAP STAMPED "ODOT CONTROL 23"	-
24	105360.609	156366.049	886.80	2911+39.95	-60.18	2/29/2016	SET 5/8" X 30" IRON REBAR WITH A 1-1/2" DIAMETER ALUMINUM CAP STAMPED "ODOT CONTROL 24"	-
25	105893.968	156004.289	648.66	2905+04.84	41.57	2/29/2016	SET 5/8" X 30" IRON REBAR WITH A 1-1/2" DIAMETER ALUMINUM CAP STAMPED "ODOT CONTROL 25"	-
1000	105836.577	156014.869	-	2905+61.12	53.05	5/19/2016	FD. 5/8" SMOOTH IRON ROD FLUSH WITH SURFACE, GOOD CONDITION, PADDLE BOARD NEARBY MARKED "SHRP RT 65.84"	8B-29-3
1001	105880.121	156115.695	-	2905+59.17	-56.76	5/19/2016	FD. 5/8" IRON ROD 0.2' BELOW SURFACE, GOOD CONDITION, PADDLE-BOARD NEARBY MARKED "SHRP PCS 2905+53.62 LT 44.11"	8B-29-3
1002	105610.775	156243.661	-	2908+61.21	-61.12	5/19/2016	FD. 5/8" SMOOTH IRON ROD 0.2' BELOW SURFACE FAIR CONDITION, PADDLE-BOARD NEARBY MARKED "SHRP EQ POT 2908+52.67AH PT 2008+54.06BK LT 44.14"	8B-29-3
1003	105341.193	156255.139	-	2911+08.23	47.86	5/19/2016	FD. 1/2" SMOOTH IRON ROD 0.3' ABOVE SURFACE, GOOD CONDITION, PADDLE BOARD NEARBY MARKED "SHRP RT 65.00"	8B-29-3
1004	105389.674	156353.141	-	2911+08.18	-61.48	5/19/2016	FD. 5/8" SMOOTH IRON ROD, 0.4' BELOW SURFACE, GOOD CONDITION, PADDLE-BOARD NEARBY MARKED "SHRP POT 2911+00 LT 44.18"	8B-29-3
1005	104950.915	156593.747	-	2916+08.12	-82.85	5/23/2016	FD. 5/8" IRON ROD FLUSH WITH SURFACE, GOOD CONDITION, PADDLEBOARD NEARBY MARKED "SHRP CL L4 2916+00 POT"	8B-29-3
1047	105737.737	155977.436	-	2906+35.36	126.20	5/19/2016	FD. 5/8" SMOOTH IRON ROD, 0.1' ABOVE SURFACE, GOOD CONDITION	7B-24-12
1048	105739.663	155664.376	-	2905+22.95	414.35	5/19/2016	FD. 1" INSIDE DIAMETER IRON PIPE 0.2' ABOVE SURFACE, GOOD CONDITION, STEEL R/W FENCE CORNER BETWEEN SECTIONS 23 & 24, T28S R6W	7B-24-12
1049	105441.738	156119.350	-	2909+57.95	125.07	5/19/2016	FD. 5/8" SMOOTH IRON ROD SET IN CONCR. PEDESTAL 0.3' ABOVE SURFACE, GOOD CONDITION, 4"X4" WOOD WITNESS POST NEARBY MARKED "SHRW 125"	7B-24-12
1105	104642.656	156874.726	-	2920+08.95	-198.23	6/6/2016	FD. 3/4" IRON REBAR, 0.5' ABOVE SURFACE, GOOD CONDITION	UNKNOWN
1106	104639.556	156851.079	-	2920+01.25	-175.65	6/6/2016	FD. 5/8" SMOOTH IRON ROD, BENT EASTERLY TIED WHERE ROD ENTERS GROUND, POOR CONDITION	8B-29-3
1107	104885.749	156672.951	-	2917+01.63	-125.00	6/6/2016	FD. 5/8" SMOOTH IRON ROD, 0.3' ABOVE SURFACE, GOOD CONDITION, 4"X4" WOOD WITNESS POST NEARBY MARKED "SHRW 125" LEFT.	7B-24-12
1108	105552.838	156343.461	-	2909+57.60	-125.07	6/7/2016	FD. 5/8" SMOOTH IRON ROD SET IN 12"X12" CONCRETE BASE FLUSH WITH SURFACE, GOOD CONDITION, 4"X4" WOOD WITNESS POST LIES NEARBY MARKED "SHRW 125"	7B-24-12
1134	105736.938	156253.309	-	2907+50.27	-124.51	6/20/2016	FD. 1" O.D. IRON PIPE, 0.6' ABOVE SURFACE, GOOD CONDITION	2006-0049
104BD	106209.969	155995.334	-	2902+01.32	-48.74	6/20/2016	FD. 5/8" IRON ROD WITH 1-1/4" OPC. STAMPED "BLUEDOT CONTROL" 0.1' ABOVE SURFACE, GOOD CONDITION	ST. HWY 15-018C
105BD	105713.622	156191.389	-	2907+44.93	-58.55	6/20/2016	FD. 5/8" IRON ROD WITH 1-1/4" OPC. STAMPED "BLUEDOT CONTROL" 0.1' BELOW SURFACE, GOOD CONDITION	ST. HWY 15-018C
106BD	105829.881	156014.438	-	2905+67.04	56.01	6/20/2016	FD. 5/8" IRON ROD WITH 1-1/4" OPC. STAMPED "BLUEDOT CONTROL" 0.1' BELOW SURFACE, GOOD CONDITION	ST. HWY 15-018C
D611	104848.024	156695.617	-	2917+45.49	-128.61	6/6/2016	FD. 3" BRASS DISK, SET IN 12"X12" CONCRETE, STAMPED "STATE HIGHWAY DEPARTMENT, B.M. NO D611 ELEVATION FEET 1967" FLUSH WITH SURFACE, GOOD CONDITION, 4"X4" WOOD WITNESS POST NEARBY MARKED "USOUTHBOUND"	UNRECORDED

MONUMENTS 1000 - 1044 & 1087 ARE CONSTRUCTION CENTER LINE REFERENCE POINTS OPC. = ORANGE PLASTIC CAP

POINT LEGEND	
▲	SET NETWORK MONUMENT
○	FOUND MONUMENT
⊕	FOUND BENCH MARK
SEE SHEET 2 FOR LINE LEGEND	

REGISTERED PROFESSIONAL LAND SURVEYOR

Marshall R. Wagstaff

OREGON
 JANUARY 9, 2001
 MARSHALL R. WAGSTAFF
 49476LS
 RENEWS: JUNE 30, 2018

SI FEET OREGON DEPARTMENT OF TRANSPORTATION
 HORIZONTAL CONTROL, RECOVERY AND RETRACEMENT MAP
 I-5: ROBERTS CREEK RD. - SOUTH UMPQUA RIVER
 PACIFIC HWY. NO. 1 (I-5) M.P. 114.8 TO 120.3
 DOUGLAS COUNTY
 CAD FILE: S_K18967_CRR_01.DGN

FOR ODOT REGION 3
 3500 NW, STEWART PKWY.
 ROSEBURG, OR. 97470

JUNE 26, 2018
 SCALE: 1" = 100'
 SHEET 4 OF 13

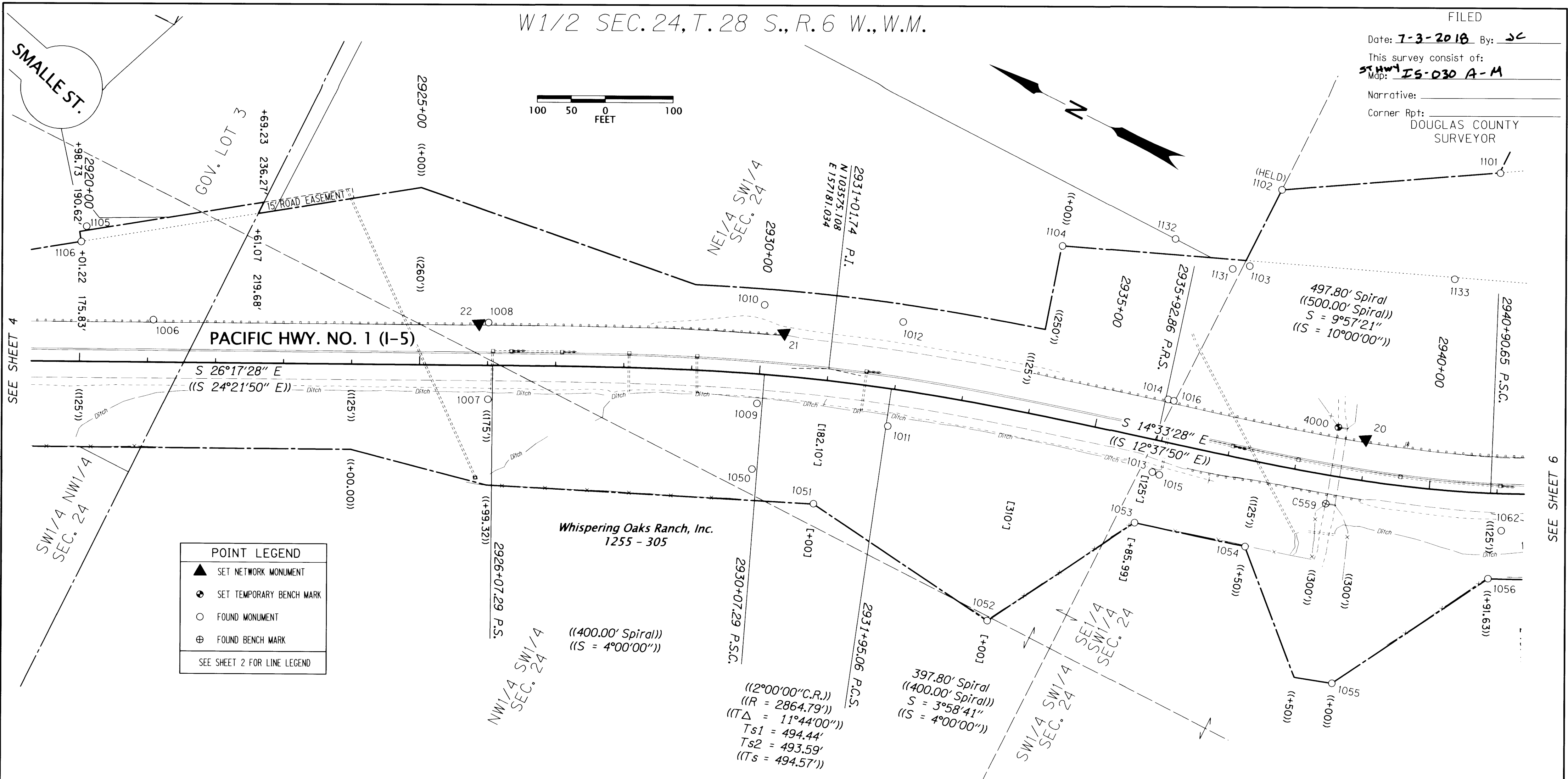
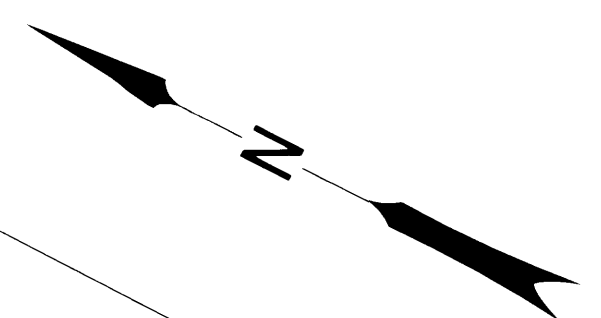
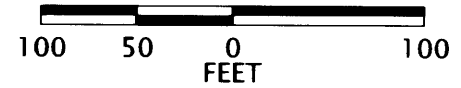
W1/2 SEC. 24, T. 28 S., R. 6 W., W.M.

FILED

Date: 7-3-2018 By: JC

This survey consist of:
 Map: IS-030 A-M

Narrative:
 Corner Rpt: DOUGLAS COUNTY SURVEYOR



POINT LEGEND

- ▲ SET NETWORK MONUMENT
- SET TEMPORARY BENCH MARK
- FOUND MONUMENT
- ⊕ FOUND BENCH MARK

SEE SHEET 2 FOR LINE LEGEND

MONUMENT TABLE

PT. NO.	OCRS NORTHING	OCRS EASTING	ELEVATION	STATION	OFFSET (- IS LEFT)	DATE	DESCRIPTION	REFERENCE
20	102823.948	157444.917	848.88	2938+96.66	-60.18	2/29/2016	SET 5/8" X 30" IRON REBAR WITH A 1-1/2" DIAMETER ALUMINUM CAP STAMPED "ODOT CONTROL 20"	-
21	103657.198	157197.855	804.89	2930+30.96	-62.69	2/29/2016	SET 5/8" X 30" IRON REBAR WITH A 1-1/2" DIAMETER ALUMINUM CAP STAMPED "ODOT CONTROL 21"	-
22	104064.077	157007.686	774.22	2925+86.57	-61.16	2/29/2016	SET 5/8" X 30" IRON REBAR WITH A 1-1/2" DIAMETER ALUMINUM CAP STAMPED "ODOT CONTROL 22"	-
1006	104493.477	156796.739	-	2921+08.15	-62.23	5/17/2016	FD. 5/8" SMOOTH IRON ROD, 0.8' BELOW SURFACE, GOOD CONDITION, PADDLE-BOARD NEARBY MARKED "SHRP CL L4 2921+00 44.00 LT"	8B-29-3
1007	104002.209	156914.698	-	2926+00.85	49.61	5/16/2016	FD. 5/8" IRON REBAR WITH 1-1/2" ALUMINUM CAP STAMP UNREADABLE. ROD BENT NORTHERLY FLUSH WITH SURFACE. POOR CONDITION, METAL WITNESS POST NEARBY	8B-29-3
1008	104051.989	157015.491	-	2926+00.86	-62.81	5/19/2016	FD. 5/8" SMOOTH IRON ROD 0.6' BELOW SURFACE, GOOD CONDITION, PADDLE-BOARD NEARBY MARKED "SHRP PS 2925+92.80 LT 44.00"	8B-29-3
1009	103646.491	157087.886	-	2929+99.55	43.22	5/16/2016	FD. 5/8" IRON REBAR WITH 1-1/2" ALUMINUM CAP STAMPED "OREG STATE HWY DIV" FLUSH WITH SURFACE, GOOD CONDITION, PADDLE-BOARD NEARBY MARKED "SHRP 65.84"	8B-29-3
1010	103701.499	157221.882	-	2929+99.86	-101.63	5/19/2016	FD. 5/8" SMOOTH IRON ROD WITH 1-1/2" ALUMINUM CAP STAMPED "OREG STATE HWY DEPT" 0.1' BELOW SURFACE, GOOD CONDITION	8B-29-3
1011	103459.859	157145.106	-	2931+97.85	54.86	5/19/2016	FD. 5/8" SMOOTH IRON ROD WITH 1-1/2" ALUMINUM CAP STAMPED "OREG STATE HWY DEPT" 0.2' BELOW SURFACE, GOOD CONDITION, PADDLE-BOARD NEARBY MARKED "SHRP"	8B-29-3
1012	103508.455	157291.382	-	2931+98.11	-99.28	5/19/2016	FD. 5/8" IRON ROD WITH 1-1/2" ALUMINUM CAP STAMPED "OREG STATE HWY DEPT" FLUSH WITH SURFACE, GOOD CONDITION, PADDLE-BOARD NEARBY MARKED "SHRP PCS 2931+92.37 LT 80.88"	8B-29-3
1013	103082.048	157260.417	-	2935+96.45	47.10	5/16/2016	FD. 5/8" IRON REBAR WITH 1-1/2" ALUMINUM CAP STAMPED "OREG STATE HWY DEPT" 0.2' ABOVE SURFACE, GOOD CONDITION, PADDLE-BOARD NEARBY MARKED "SHRP PT 2935+92.37"	8B-29-3
1014	103109.279	157365.851	-	2935+96.59	-61.79	5/17/2016	FD. 5/8" SMOOTH IRON ROD, 0.5' BELOW SURFACE, GOOD CONDITION, PADDLE-BOARD NEARBY MARKED "SHRP PT 2935+92.37 LT 43.96"	8B-29-3
1015	103071.164	157261.516	-	2936+07.25	48.77	5/16/2016	FD. 5/8" IRON ROD WITH 1-1/2" ALUMINUM CAP STAMPED "OREG STATE HWY DEPT" FLUSH WITH SURFACE, GOOD CONDITION, PADDLE-BOARD NEARBY MARKED "SHRP"	8B-29-3
1016	103100.853	157367.829	-	2936+05.25	-61.59	5/17/2016	FD. 5/8" SMOOTH IRON ROD, 0.6' BELOW SURFACE, GOOD CONDITION, CARBONITE WHITNESS POST NEARBY	8B-29-3
1050	103609.647	156998.834	-	2929+99.61	139.59	5/19/2016	FD. 5/8" SMOOTH IRON ROD FLUSH WITH SURFACE, GOOD CONDITION, 4"X4" WITNESS POST NEARBY MARKED "SHRW"	UNRECORDED
1051	103506.009	156994.306	-	2931+00.06	181.69	5/19/2016	FD. 5/8" SMOOTH IRON ROD FLUSH WITH SURFACE, GOOD CONDITION, PADDLE-BOARD NEARBY MARKED "SHRW 2931+00 182.10 RT"	8B-29-3
1052	103200.934	156957.089	-	2934+00.08	309.80	5/19/2016	FD. 5/8" SMOOTH IRON ROD, FLUSH WITH SURFACE, GOOD CONDITION, PADDLE-BOARD NEARBY MARKED "SHRW 2934+00 310"	8B-29-3
1053	103072.005	157182.540	-	2935+86.59	125.00	5/19/2016	FD. 5/8" SMOOTH IRON ROD 0.1' ABOVE SURFACE IN CONCRETE PEDESTAL. GOOD CONDITION, PADDLE-BOARD NEARBY MARKED "SHRW 2935+91.63 125"	7B-24-12
1054	102911.410	157224.968	-	2937+50.52	125.24	5/19/2016	FD. 5/8" SMOOTH IRON ROD FLUSH WITH SURFACE, GOOD CONDITION, 4"X4" WITNESS POST LIES NEARBY	7B-24-12
1055	102707.132	157104.195	-	2938+00.32	299.99	5/19/2016	FD. 5/8" IRON ROD FLUSH WITH SURFACE, GOOD CONDITION, 4"X4" WITNESS POST NEARBY MARKED "SHRW"	7B-24-12
1102	103098.530	157715.727	-	2936+98.02	-397.48	6/6/2016	FD. 5/8" IRON ROD FLUSH WITH SURFACE, GOOD CONDITION, 4"X4" WITNESS POST NEARBY MARKED "SHRW"	7B-24-12
1103	103090.451	157594.403	-	2936+73.54	-278.16	6/6/2016	FD. 5/8" IRON REBAR WITH 1-1/2" ALUMINUM CAP STAMPED "OREG STATE HWY DIV" 0.3' BELOW SURFACE, GOOD CONDITION METAL STINGER NEARBY	7B-24-12
1104	103349.542	157496.765	-	2934+00.98	-249.96	6/6/2016	FD. 5/8" SMOOTH IRON ROD, 0.2' ABOVE SURFACE, GOOD CONDITION	UNRECORDED
1131	103110.934	157579.416	-	2936+49.27	-268.88	6/15/2016	FD. 5/8" IRON REBAR 0.6' ABOVE SURFACE, GOOD CONDITION	7B-24-12
1132	103205.640	157580.629	-	2935+57.47	-293.90	6/15/2016	FD. 5/8" IRON REBAR 0.2' ABOVE SURFACE, GOOD CONDITION, ANGLE IRON NEARBY	M55-59A
4000	102867.609	157442.689	840.44	2938+53.27	-71.37	3/2/2016	SET 1" COPPER DISK SET IN CONCRETE WALL	M55-59A
C559	102833.766	157334.446	848.30	2938+53.43	42.04	3/2/2016	FD. 3" BRASS DISK IN CONCRETE WALL STAMPED "OREGON STATE HIGHWAY BENCH MARK C559 1983"	UNRECORDED

MONUMENTS 1000 - 1044 & 1087 ARE CONSTRUCTION CENTER LINE REFERENCE POINTS RPC = RED PLASTIC CAP

RECORD DATA

(()) ODOT R/W DRG. 7B-24-12
 [] ODOT R/W DRG. 8B-29-3

NO MEASURED/RESOLVED
 BRACKET SUPERCEDES RECORD

REGISTERED PROFESSIONAL LAND SURVEYOR
Marshall R. Wagstaff
 OREGON
 JANUARY 9, 2001
 MARSHALL R. WAGSTAFF
 49476LS
 RENEWS: JUNE 30, 2018

SI FEET

OREGON DEPARTMENT OF TRANSPORTATION

HORIZONTAL CONTROL, RECOVERY AND RETRACEMENT MAP
 1-5: ROBERTS CREEK RD. - SOUTH UMPQUA RIVER
 PACIFIC HWY. NO. 1 (I-5) M.P. 114.8 TO 120.3
 DOUGLAS COUNTY
 CAD FILE: S.K18967_CRR_01.DGN

FOR ODOT REGION 3
 3500 NW. STEWART PKWY.
 ROSEBURG, OR. 97470

JUNE 26, 2018
 SCALE: 1" = 100'
 SHEET 5 OF 13

S1/2 SEC. 24, T. 28 S., R. 6 W., W.M.
 N1/2 SEC. 25, T. 28 S., R. 6 W., W.M.

FILED

Date: 1-3-2018 By: JC

This survey consist of:

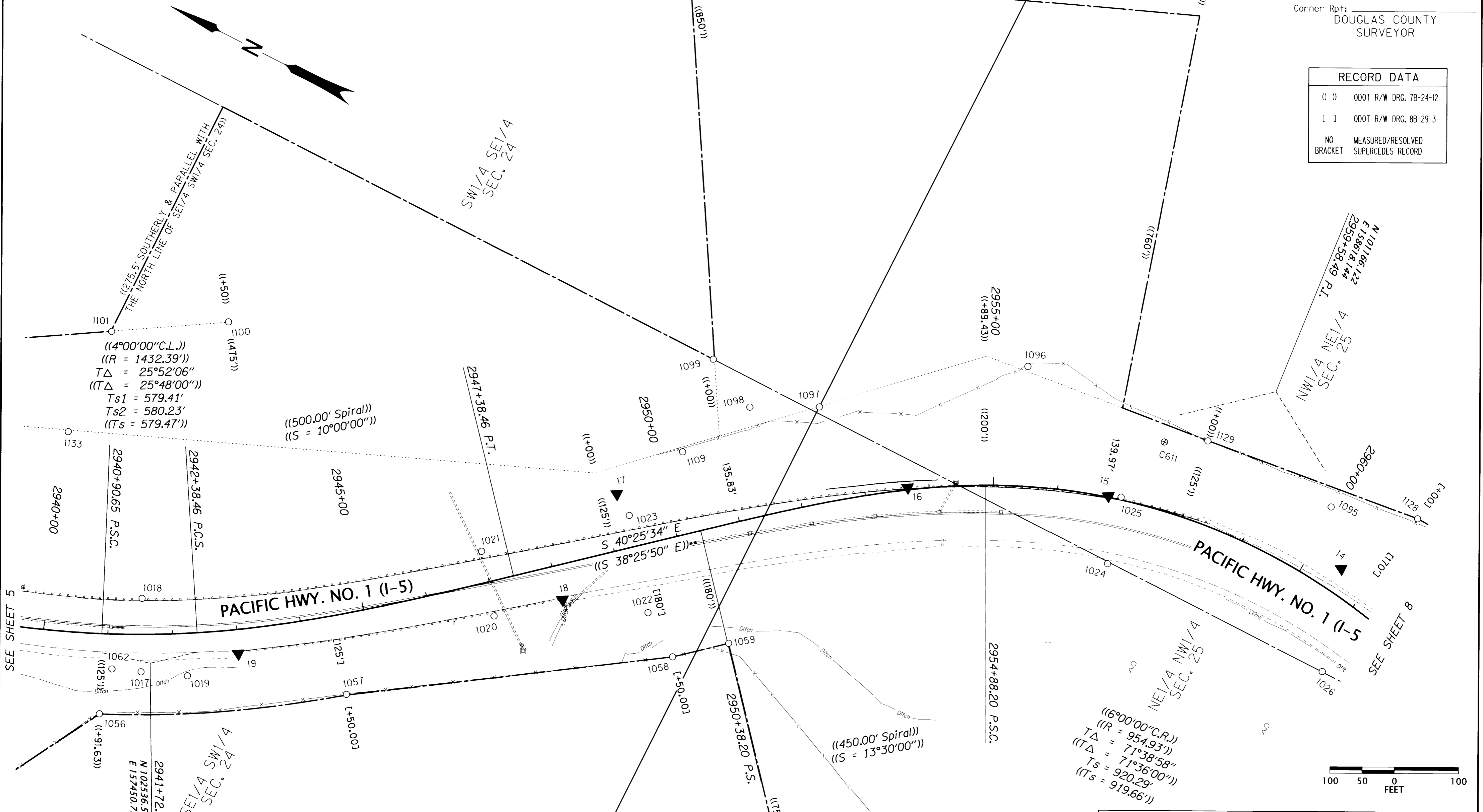
Map: IS-030 A-M

Narrative: _____

Corner Rpt: _____

DOUGLAS COUNTY
 SURVEYOR

RECORD DATA	
(())	ODOT R/W DRG. 7B-24-12
[]	ODOT R/W DRG. 8B-29-3
NO	MEASURED/RESOLVED
BRACKET	SUPERCEDES RECORD



SEE SHEET 5

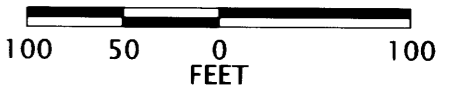
SEE SHEET 8

POINT LEGEND	
▲	SET NETWORK MONUMENT
○	FOUND MONUMENT
⊕	FOUND BENCH MARK
SEE SHEET 7 FOR MONUMENT TABLE	
SEE SHEET 2 FOR LINE LEGEND	

Thomas A & Bonnie Pappas, Trs
 Instr. No. 2011-006217

REGISTERED PROFESSIONAL LAND SURVEYOR
 Marshall R. Wagstaff
 OREGON
 JANUARY 9, 2001
 MARSHALL R. WAGSTAFF
 49476LS
 RENEWS: JUNE 30, 2018

SI FEET
T OREGON DEPARTMENT OF TRANSPORTATION
 HORIZONTAL CONTROL, RECOVERY AND RETRACEMENT MAP
 I-5: ROBERTS CREEK RD. - SOUTH UMPQUA RIVER
 PACIFIC HWY. NO. 1 (I-5) M.P. 114.8 TO 120.3
 DOUGLAS COUNTY
 CAD FILE: S.K18967_CRR.01.DGN
 FOR ODOT REGION 3
 3500 NW. STEWART PKWY.
 ROSEBURG, OR. 97470
 JUNE 26, 2018
 SCALE: 1" = 100'
 SHEET 6 OF 13




MONUMENT TABLE FOR SHEETS 6 & 8

MONUMENTS 1000 - 1044 & 1087 ARE CONSTRUCTION CENTER LINE REFERENCE POINTS YPC. = YELLOW PLASTIC CAP RPC. = RED PLASTIC CAP

PT. NO.	OCRS NORTHING	OCRS EASTING	ELEVATION	STATION	OFFSET (- IS LEFT)	DATE	DESCRIPTION	REFERENCE
11	100108.325	157808.926	961.10	2970+78.47	143.67	2/29/2016	SET 5/8" X 30" IRON REBAR WITH A 1-1/2" DIAMETER ALUMINUM CAP STAMPED "ODOT CONTROL 11"	-
12	100234.895	158111.333	950.25	2968+13.48	-49.33	2/29/2016	SET 5/8" X 23" IRON REBAR WITH A 1-1/2" DIAMETER ALUMINUM CAP STAMPED "ODOT CONTROL 12"	-
13	100604.284	158303.299	964.32	2964+08.15	-30.11	2/29/2016	SET 5/8" X 30" IRON REBAR WITH A 1-1/2" DIAMETER ALUMINUM CAP STAMPED "ODOT CONTROL 13"	-
14	100951.354	158419.157	967.71	2960+52.08	-38.08	2/29/2016	SET 5/8" X 30" IRON REBAR WITH A 1-1/2" DIAMETER ALUMINUM CAP STAMPED "ODOT CONTROL 14"	-
15	101325.762	158355.657	958.43	2956+79.39	-1.97	2/29/2016	SET 5/8" X 30" IRON REBAR WITH A 1-1/2" DIAMETER ALUMINUM CAP STAMPED "ODOT CONTROL 15"	-
16	101609.963	158226.650	943.19	2953+66.82	-3.57	2/29/2016	SET 5/8" X 30" IRON REBAR WITH A 1-1/2" DIAMETER ALUMINUM CAP STAMPED "ODOT CONTROL 16"	-
17	102008.715	158013.129	911.89	2949+24.74	-85.83	2/29/2016	SET 5/8" X 30" IRON REBAR WITH A 1-1/2" DIAMETER ALUMINUM CAP STAMPED "ODOT CONTROL 17"	-
18	102009.822	157828.671	907.04	2948+04.28	53.87	2/29/2016	SET 5/8" X 30" IRON REBAR WITH A 1-1/2" DIAMETER ALUMINUM CAP STAMPED "ODOT CONTROL 18"	-
19	102421.415	157526.193	879.75	2942+99.03	37.29	2/29/2016	SET 5/8" X 30" IRON REBAR WITH A 1-1/2" DIAMETER ALUMINUM CAP STAMPED "ODOT CONTROL 19"	-
1017	102543.178	157432.222	-	2941+51.39	58.15	5/19/2016	FD. 5/8" SMOOTH IRON ROD WITH 1-1/2" ALUMINUM CAP NOT READABLE, BENT SOUTHERLY. FLUSH WITH SURFACE, POOR CONDITION, TIED WHERE ROD ENTERS GROUND, PADDLEBOARD NEARBY MARKED "SHRP PI 2941+39.62AH 2941+50.45BK RT 32.32"	8B-29-3
1018	102593.289	157534.570	-	2941+53.16	-55.80	5/17/2016	FD. 5/8" SMOOTH IRON ROD, 0.2' BELOW SURFACE, GOOD CONDITION, PADDLE-BOARD NEARBY MARKED "SHRP PI 2941+39.62 AH 2941+50.45 BK"	8B-29-3
1019	102476.233	157459.456	-	2942+20.26	65.93	5/19/2016	FD. 5/8" IRON ROD WITH 1-1/2" ALUMINUM CAP STAMPED "OREG STATE HWY DEPT" FLUSH WITH SURFACE, GOOD CONDITION, PADDLE-BOARD NEARBY MARKED "SHRP L4 2942+13.77 PCS RT 77"	8B-29-3
1020	102093.269	157757.972	-	2946+94.98	53.60	5/23/2016	FD. 5/8" IRON REBAR WITH 1-1/2" ALUMINUM CAP STAMPED "OREG STATE HWY DIV" 0.2' BELOW SURFACE FAIR CONDITION, NO PADDLE	8B-29-3
1021	102155.866	157838.584	-	2946+99.49	-48.37	5/17/2016	FD. 5/8" IRON REBAR WITH 1-1/2" ALUMINUM CAP STAMPED "OREG STATE HWY DIV" 0.2' ABOVE SURFACE, GOOD CONDITION, CARSONITE WHITNESS POST NEARBY 11.5 FT. AWAY	8B-29-3
1022	101882.093	157870.732	-	2949+28.79	104.68	5/23/2016	FD. 5/8" IRON REBAR WITH 1-1/2" ALUMINUM CAP STAMPED "OREG STATE HWY DIV" 0.2' ABOVE SURFACE, GOOD CONDITION, PADDLE-BOARD NEARBY MARKED "SHRP PS 2949+24.17 90.57 RT"	8B-29-3
1023	101976.230	157992.031	-	2949+35.79	-48.70	5/17/2016	FD. 5/8" IRON ROD WITH 1-1/2" ALUMINUM CAP STAMPED "OREG STATE HWY DIV" ABOVE SURFACE, GOOD CONDITION, PADDLE-BOARD NEARBY MARKED "SHRP PS 2949+24.17 LT 63.00"	8B-29-3
1024	101279.111	158261.443	-	2957+01.60	101.03	5/16/2016	FD. 5/8" IRON ROD WITH 1-1/2" ALUMINUM CAP STAMPED "OREG STATE HWY DIV" 0.2' ABOVE SURFACE, GOOD CONDITION, PADDLE-BOARD NEARBY MARKED "SHRP PCS 2956+74.17"	8B-29-3
1025	101306.942	158363.015	-	2956+99.40	-4.26	5/17/2016	FD. 5/8" IRON ROD WITH 1-1/2" ALUMINUM CAP STAMPED "OREG STATE HWY DIV" 0.1' BELOW SURFACE, GOOD CONDITION, PADDLE-BOARD NEARBY MARKED "SHRP PCS 2956+74.17 LT46.34"	8B-29-3
1026	100905.867	158263.585	-	2961+24.20	108.48	5/16/2016	FD. 5/8" IRON REBAR WITH 1-1/2" ALUMINUM CAP STAMPED "OREG STATE HWY DIV" 0.3' ABOVE SURFACE, GOOD CONDITION, PADDLE-BOARD NEARBY MARKED "SHRP PCS 2960+78.61"	8B-29-3
1027	100883.729	158404.117	-	2961+18.73	-33.69	5/17/2016	FD. 5/8" IRON ROD WITH 1-1/2" ALUMINUM CAP STAMPED "OREG STATE HWY DIV" 0.1' ABOVE SURFACE, GOOD CONDITION, PADDLE-BOARD NEARBY MARKED "SHRP"	8B-29-3
1028	100252.043	157974.408	-	2968+69.79	76.66	5/16/2016	FD. 5/8" IRON ROD WITH 1-1/2" ALUMINUM CAP STAMPED "OREG STATE HWY DIV" 0.1' ABOVE SURFACE, GOOD CONDITION, PADDLE-BOARD NEARBY MARKED "SHRP"	8B-29-3
1029	100183.816	158085.919	-	2968+70.33	-54.07	5/17/2016	FD. 5/8" IRON ROD WITH 1-1/4" YPC. STAMPED "OSHD RW" 0.1' BELOW SURFACE, GOOD CONDITION, PADDLE-BOARD NEARBY MARKED "SHRP 2968+28.61 56.25LT"	8B-29-3
1030	99939.588	157785.369	-	2972+34.98	76.34	5/16/2016	FD. 5/8" IRON REBAR WITH 1-1/2" ALUMINUM CAP STAMPED "OREG STATE HWY DIV" BENT SOUTHERLY 0.3' ABOVE SURFACE, POOR CONDITION, TIED WHERE ROD ENTERS GROUND, PADDLE-BOARD NEARBY MARKED "SHRP RT 72.99"	8B-29-3
1031	99870.912	157897.660	-	2972+35.50	-55.28	5/17/2016	FD. 5/8" IRON ROD WITH 1-1/2" ALUMINUM CAP STAMPED "ODOT RIGHT OF WAY" 0.4' BELOW SURFACE, GOOD CONDITION, PADDLE-BOARD NEARBY MARKED "SHRP 2971+93.75 58.94' LT"	8B-29-3
1045	99917.026	157756.051	-	2972+69.47	89.72	5/16/2016	FD. 5/8" IRON ROD WITH 1-1/2" ALUMINUM CAP STAMPED "OREG STATE HWY DEPT" 0.1' ABOVE SURFACE, GOOD CONDITION, METAL POST NO PADDLE-BOARD NEARBY, CARSONITE POST NEARBY MARKED "ODOT SURVEY MARKER NEARBY DO NOT DISTURB"	UNKNOWN
1056	102571.413	157344.619	-	2940+91.70	124.80	5/19/2016	FD. 5/8" IRON ROD FLUSH WITH SURFACE, GOOD CONDITION, 4"x4" WITNESS POST NEARBY MARKED "SHRW"	7B-24-12
1057	102242.791	157545.520	-	2944+50.41	124.11	5/23/2016	FD. 5/8" SMOOTH IRON ROD FLUSH WITH SURFACE, GOOD CONDITION, PADDLE BOARD NEARBY MARKED "SHRW 2944+50 125 P.O.C."	8B-29-3
1058	101817.160	157827.102	-	2949+49.93	180.00	5/23/2016	FD. 5/8" IRON REBAR, FLUSH WITH SURFACE FAIR CONDITION, PADDLE LIES NEARBY MARKED "SHRW 2949+50 180 RT"	8B-29-3
1059	101748.959	157885.199	-	2950+39.52	180.00	5/23/2016	FD. 5/8" SMOOTH IRON ROD, FLUSH WITH SURFACE, GOOD CONDITION, PADDLE-BOARD NEARBY MARKED "SHRW 2950+39.43 180 RT" P.S.	8B-29-3
1060	101209.684	157662.627	-	2954+27.32	686.97	5/23/2016	FD. 5/8" IRON REBAR 0.2' ABOVE SURFACE, GOOD CONDITION	8B-29-3
1061	100214.676	157784.215	-	2970+00.34	219.93	5/23/2016	FD. 5/8" IRON ROD, FLUSH WITH SURFACE, GOOD CONDITION, PADDLE-BOARD NEARBY MARKED "SHRP AC 2970+00 POT 220 RW" RIGHT "	8B-29-3
1062	102585.493	157415.790	-	2941+07.86	54.31	5/19/2016	FD. 5/8" IRON ROD WITH 1-1/2" ALUMINUM CAP STAMPED "OREG STATE HWY DEPT" TIED PUNCH, FLUSH WITH SURFACE, GOOD CONDITION, METAL POST NEARBY, WHITE CARSONITE POST NEARBY	UNRECORDED
1091	99710.118	158062.779	-	2972+87.41	-279.84	6/1/2016	FD. 5/8" IRON ROD WITH 1-1/2" ALUMINUM CAP STAMPED "OREG STATE HWY DIV" 0.1' BELOW SURFACE, GOOD CONDITION, CARSONITE WITNESS MARKER NEARBY UNREADABLE.	I5-004A/B
1092	99907.338	158322.700	-	2969+84.02	-399.87	6/2/2016	FD. 5/8" IRON ROD WITH 1-1/2" ALUMINUM CAP STAMPED "OREG STATE HWY DIV RP" FLUSH WITH SURFACE, GOOD CONDITION, CARSONITE POST NEARBY MARKED "ODOT CENTERLINE RT STATION: 90+525.781 121.92 m LT BOUNDARY MARKER NEARBY OREGON DEPARTMENT OF TRANSPORTATION" RIGHT OF WAY STATION 2970+00, 400' LT	I5-004A
1093	100011.316	158619.470	-	2967+41.26	-599.76	6/2/2016	FD. 5/8" IRON ROD WITH 1-1/2" ALUMINUM CAP STAMPED "ODOT-RIGHT-OF-WAY" FLUSH WITH SURFACE, GOOD CONDITION, CARSONITE POST NEARBY MARKED "ODOT RIGHT OF WAY STATION: 90+452.629 182.880m LT BOUNDARY MARKER NEARBY OREGON DEPARTMENT OF TRANSPORTATION	I5-004A
1094	100419.818	158568.447	-	2964+48.24	-350.05	6/1/2016	FD. 5/8" IRON REBAR WITH 1-1/2" ALUMINUM CAP STAMPED "ODOT RIGHT OF WAY" 0.1' BELOW SURFACE, GOOD CONDITION, CARSONITE WITNESS MARKER MARKED "ODOT RIGHT OF WAY 90+358.141 106.68m LT"	I5-004A/B
1095	101008.783	158497.322	-	2959+92.54	-110.84	6/1/2016	FD. 5/8" SMOOTH IRON ROD 0.3' ABOVE SURFACE, GOOD CONDITION	8B-29-3
1096	101527.949	158478.366	-	2955+43.15	-185.71	6/6/2016	FD. 5/8" IRON REBAR 0.95' ABOVE SURFACE, FAIR TO POOR CONDITION, LEANS EASTERLY TIED WHERE ROD ENTERS GROUND	M55-59
1097	101788.897	158275.941	-	2952+54.54	-147.49	6/6/2016	FD. 5/8" IRON REBAR WITH 1-1/2" ALUMINUM CAP STAMPED "OREG STATE HWY DIV" BENT EASTERLY FLUSH WITH SURFACE, POOR CONDITION, TIED WHERE ROD ENTERS GROUND	7B-24-12
1098	101885.160	158226.745	-	2951+54.66	-168.96	6/6/2016	FD. 5/8" IRON REBAR 0.5' ABOVE SURFACE, GOOD CONDITION, NO PADDLE. ANGLE IRON NEARBY	UNKNOWN
1099	101969.376	158267.124	-	2951+17.54	-253.87	6/6/2016	FD. 5/8" IRON REBAR WITH 1-1/2" ALUMINUM CAP STAMPED "OREG STATE HWY DIV" 0.3' ABOVE SURFACE, GOOD CONDITION, PADDLE-BOARD NEARBY MARKED "SHRW"	7B-24-12
1100	102667.580	157978.156	-	2943+50.10	-475.47	6/3/2016	FD. 5/8" IRON REBAR WITH 1-1/4" RPC. (DESTROYED) FLUSH WITH SURFACE, GOOD CONDITION, (ROD)	7B-24-12
1101	102822.743	157882.628	-	2940+84.27	-468.98	6/3/2016	FD. 5/8" IRON REBAR WITH 1-1/2" ALUMINUM CAP STAMPED "OREG STATE HWY DIV" 0.3' ABOVE SURFACE, GOOD CONDITION, PADDLE-BOARD LIES NEARBY MARKED "SHRW"	8B-29-3
1109	101947.085	158117.544	-	2950+39.37	-125.35	6/6/2016	FD. 5/8" SMOOTH IRON ROD SET IN 12"x12" CONCRETE PEDESTAL 0.2' ABOVE CONCRETE GOOD CONDITION, 4"x4" WOOD WITNESS POST NEARBY	8B-29-3
1126	100536.829	158526.033	-	2963+75.95	-260.14	6/16/2016	FD. 5/8" IRON REBAR 0.7' ABOVE SURFACE, GOOD CONDITION	M55-59B
1127	100636.105	158530.261	-	2962+98.16	-224.85	6/16/2016	FD. 5/8" IRON REBAR 0.8' ABOVE SURFACE BENT NORTHERLY TIED WHERE ROD ENTERS GROUND, POOR CONDITION	M55-59
1128	100880.464	158541.787	-	2960+99.33	-169.72	6/16/2016	FD. 5/8" SMOOTH IRON ROD, 0.4' ABOVE SURFACE BENT EASTERLY TIED WHERE ROD ENTERS GROUND, POOR CONDITION,	7B-24-12
1129	101226.143	158501.885	-	2957+99.08	-124.84	6/16/2016	FD. 5/8" IRON ROD, FLUSH WITH SURFACE, GOOD CONDITION	7B-24-12
1133	102812.663	157713.526	-	2940+09.18	-309.18	6/15/2016	FD. 5/8" IRON REBAR 0.4' ABOVE SURFACE, GOOD CONDITION, ANGLE IRON WITH WOOD SIGN MARKED "8" NEARBY	M55-59A
1141	100561.300	158415.697	-	2963+98.05	-149.97	6/16/2016	FD. 5/8" IRON ROD WITH 1-1/2" ALUMINUM CAP STAMPED "OREGON STATE HWY DIV" 0.1' ABOVE SURFACE, GOOD CONDITION, CARSONITE POST NEARBY MARKED "BOUNDARY 90+342.901 LT. 45.720 m "	ST HWY I5-004A
C611	101285.651	158469.656	-	2957+41.72	-103.42	6/1/2016	FD. 3" BRASS DISK, SET IN 12"x12" CONCRETE, STAMPED "STATE HIGHWAY DEPARTMENT, B.M. NO C611 ELEVATION FEET 1967'4"X4" WOOD WITNESS POST NEARBY MARKED "USOUTHBOUND" 0.3' BELOW SURFACE, GOOD CONDITION	UNRECORDED

REGISTERED
 PROFESSIONAL
 LAND SURVEYOR
Marshall R. Wagstaff
 OREGON
 JANUARY 9, 2001
 MARSHALL R. WAGSTAFF
 49476LS

RENEWS: JUNE 30, 2018

SI FEET
 OREGON DEPARTMENT OF TRANSPORTATION
 HORIZONTAL CONTROL, RECOVERY AND RETRACEMENT MAP
 I-5: ROBERTS CREEK RD. - SOUTH UMPQUA RIVER
 PACIFIC HWY. NO. 1 (I-5) M.P. 114.8 TO 120.3
 DOUGLAS COUNTY
 CAD FILE: S_K18967_CRR_01.DGN
 FOR ODOT REGION 3
 3500 NW, STEWART PKWY.
 ROSEBURG, OR. 97470
 JUNE 26, 2018
 SCALE: 1" = 100'
 SHEET 7 OF 13

W1/2 SEC. 25, T. 28 S., R. 6 W., W.M.

FILED

Date: 7-3-2018 By: JC

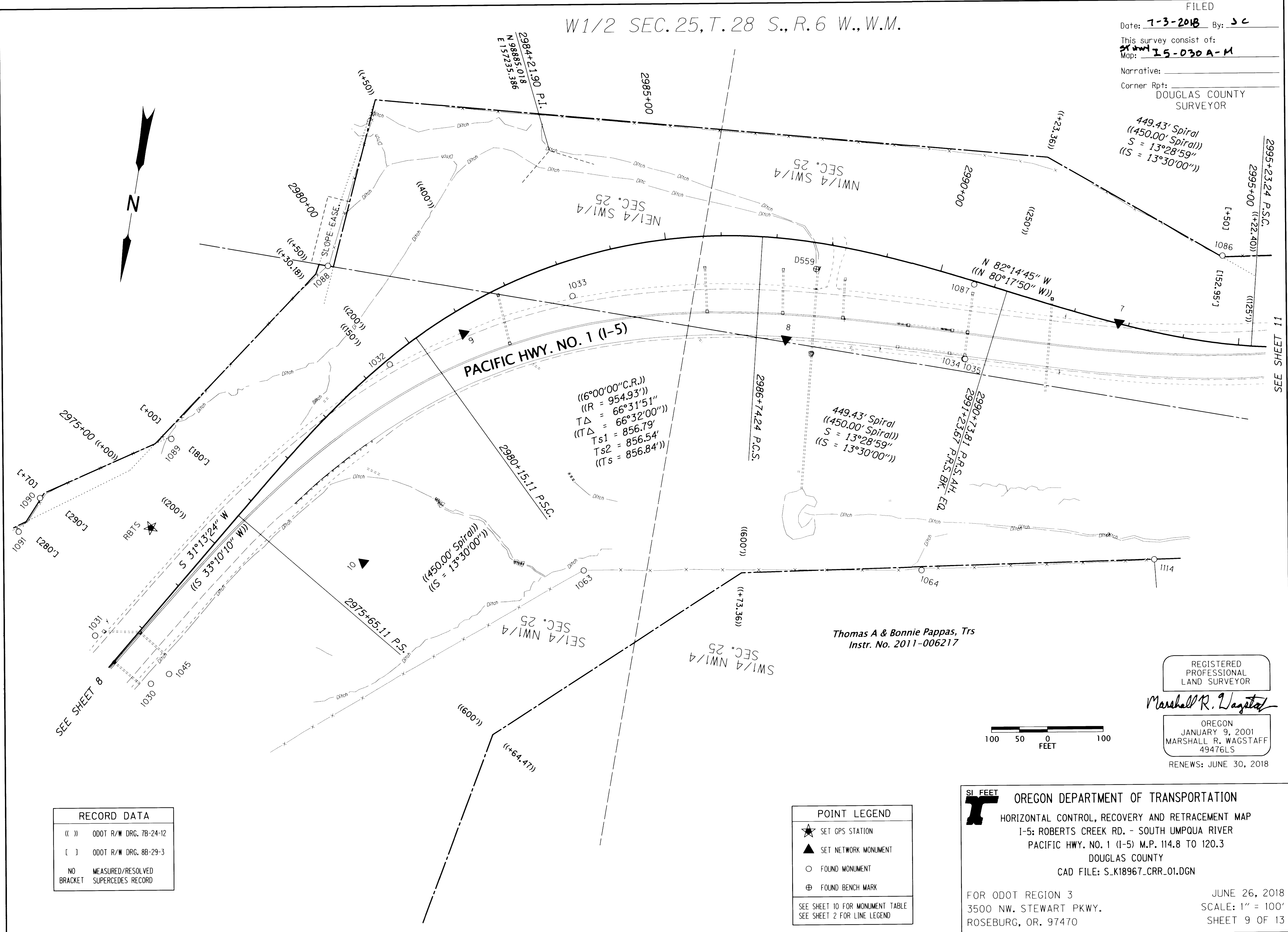
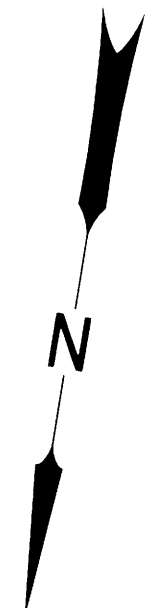
This survey consist of:

Map: 15-030A-M

Narrative:

Corner Rpt:
DOUGLAS COUNTY
SURVEYOR

449.43' Spiral
((450.00' Spiral))
S = 13°28'59"
((S = 13°30'00"))

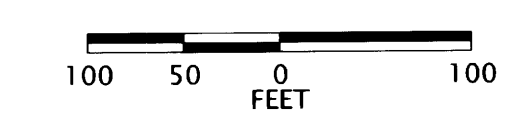


SEE SHEET 11

SEE SHEET 8

RECORD DATA	
(())	ODOT R/W DRG. 7B-24-12
[]	ODOT R/W DRG. 8B-29-3
NO BRACKET	MEASURED/RESOLVED SUPERCEDES RECORD

POINT LEGEND	
★	SET GPS STATION
▲	SET NETWORK MONUMENT
○	FOUND MONUMENT
⊕	FOUND BENCH MARK
SEE SHEET 10 FOR MONUMENT TABLE SEE SHEET 2 FOR LINE LEGEND	



REGISTERED PROFESSIONAL LAND SURVEYOR

Marshall R. Wagstaff

OREGON
JANUARY 9, 2001
MARSHALL R. WAGSTAFF
49476LS
RENEWS: JUNE 30, 2018

SI FEET OREGON DEPARTMENT OF TRANSPORTATION
HORIZONTAL CONTROL, RECOVERY AND RETRACEMENT MAP
I-5: ROBERTS CREEK RD. - SOUTH UMPQUA RIVER
PACIFIC HWY. NO. 1 (I-5) M.P. 114.8 TO 120.3
DOUGLAS COUNTY
CAD FILE: S.K18967_CRR_01.DGN

FOR ODOT REGION 3
3500 NW. STEWART PKWY.
ROSEBURG, OR. 97470

JUNE 26, 2018
SCALE: 1" = 100'
SHEET 9 OF 13

MONUMENT TABLE FOR SHEETS 9 & 11

MONUMENTS 1000 - 1044 & 1087 ARE CONSTRUCTION CENTER LINE REFERENCE POINTS YPC. = YELLOW PLASTIC CAP

PT. NO.	OCRS NORTHING	OCRS EASTING	ELEVATION	STATION	OFFSET (- IS LEFT)	DATE	DESCRIPTION	REFERENCE
3	98269.094	155161.727	723.85	3007+18.85	-61.65	2/29/2016	SET 5/8" X 30" IRON REBAR WITH A 1-1/2" DIAMETER ALUMINUM CAP STAMPED "ODOT CONTROL 3"	-
4	98591.937	155203.297	749.12	3003+97.18	23.33	2/29/2016	SET 5/8" X 30" IRON REBAR WITH A 1-1/2" DIAMETER ALUMINUM CAP STAMPED "ODOT CONTROL 4"	-
5	98872.075	155455.861	770.01	3000+27.84	29.22	2/29/2016	SET 5/8" X 30" IRON REBAR WITH A 1-1/2" DIAMETER ALUMINUM CAP STAMPED "ODOT CONTROL 5"	-
6	99014.276	155697.959	786.09	2997+56.51	41.90	2/29/2016	SET 5/8" X 30" IRON REBAR WITH A 1-1/2" DIAMETER ALUMINUM CAP STAMPED "ODOT CONTROL 6"	-
7	99023.503	156179.924	807.27	2992+81.90	-1.69	2/29/2016	SET 5/8" X 30" IRON REBAR WITH A 1-1/2" DIAMETER ALUMINUM CAP STAMPED "ODOT CONTROL 7"	-
8	99148.956	156763.429	842.49	2987+38.57	178.37	2/29/2016	SET 5/8" X 30" IRON REBAR WITH A 1-1/2" DIAMETER ALUMINUM CAP STAMPED "ODOT CONTROL 8"	-
9	99231.898	157334.616	880.66	2980+91.94	40.86	2/29/2016	SET 5/8" X 30" IRON REBAR WITH A 1-1/2" DIAMETER ALUMINUM CAP STAMPED "ODOT CONTROL 9"	-
10	99664.072	157445.532	896.39	2976+48.57	223.92	2/29/2016	SET 5/8" X 30" IRON REBAR WITH A 1-1/2" DIAMETER ALUMINUM CAP STAMPED "ODOT CONTROL 10"	-
1032	99307.880	157456.112	-	2979+48.48	8.77	5/17/2016	FD. 5/8" IRON REBAR WITH 1-1/4" YPC. STAMPED "SHHD R/W" 0.3' BELOW SURFACE, GOOD COND, NO PADDLE	8B-29-3
1033	99134.591	157152.886	-	2983+09.16	62.49	5/17/2016	FD. 5/8" IRON REBAR WITH 1-1/2" ALUMINUM CAP STAMPED "OREG STATE HWY DIV" 0.4' BELOW SURFACE, GOOD CONDITION, NO PADDLE-BOARD NEARBY	8B-29-3
1034	99132.134	156442.493	-	2990+85.88	137.86	5/16/2016	FD. 5/8" IRON ROD WITH 1-1/2" ALUMINUM CAP STAMPED "OREG STATE HWY DIV" 0.3' BELOW SURFACE, GOOD CONDITION, PADDLE-BOARD NEARBY MARKED "SHRP EQ PT 2989+20.90AH PT 2989+26.78 BK RT 45.41"	8B-29-3
1035	99132.080	156441.081	-	2990+87.29	137.62	5/16/2016	FD. 5/8" IRON ROD WITH 1-1/2" ALUMINUM CAP STAMPED "OREG STATE HWY DIV" 0.4' BELOW SURFACE, GOOD CONDITION, PADDLE-BOARD LIES NEARBY MARKED "SHRP RT 45.45"	8B-29-3
1036	99031.798	155736.065	-	2997+16.65	46.41	5/16/2016	FD. 5/8" IRON ROD WITH 1-1/2" ALUMINUM CAP STAMPED "OREG STATE HWY DIV" 0.1' ABOVE SURFACE, GOOD CONDITION, NO PADDLE-BOARD	8B-29-3
1037	98423.867	155231.297	-	3005+37.36	-79.70	5/24/2016	FD. 5/8" IRON REBAR WITH 1-1/2" ALUMINUM CAP STAMPED "OREG STATE HWY DIV" 0.2' ABOVE SURFACE, GOOD CONDITION, PADDLE-BOARD NEARBY MARKED "SHRP"	8B-29-3
1038	98422.072	155117.795	-	3005+82.96	24.85	5/16/2016	FD. 5/8" IRON ROD WITH 1-1/2" ALUMINUM CAP STAMPED "OREG STATE HWY DIV" BENT SOUTHERLY FLUSH WITH SURFACE, POOR CONDITION, NO PADDLE-BOARD	8B-29-3
1039	98377.362	155229.212	-	3005+85.70	-95.17	5/24/2016	FD. 5/8" IRON REBAR WITH 1-1/2" ALUMINUM CAP STAMPED "OREG STATE HWY DIV" 0.2' BELOW SURFACE, GOOD CONDITION, PADDLE-BOARD NEARBY MARKED "SHRP"	8B-29-3
1063	99614.081	157053.961	-	2980+13.84	512.16	5/23/2016	FD. 5/8" IRON ROD, FLUSH WITH SURFACE, GOOD CONDITION, PADDLE-BOARD NEARBY MARKED "SHRP AC 2980+14.47 RW PSC 512.34"	8B-29-3
1064	99515.787	156457.145	-	2991+23.36	520.00	5/23/2016	FD. 5/8" SMOOTH IRON ROD, 0.1' ABOVE SURFACE, GOOD CONDITION, PADDLE-BOARD NEARBY MARKED "SHRP AC 2991+23.36 RW 2990+72.40 AC 520 RT"	8B-29-3
1065	99399.341	155901.187	-	2995+23.56	375.17	5/23/2016	FD. 5/8" SMOOTH IRON ROD, 0.2' ABOVE SURFACE, GOOD CONDITION, PADDLE-BOARD NEARBY MARKED "SHRP AC 2995+22.40 RW PSC 375"	7B-24-12
1066	98941.677	155024.806	-	3002+50.87	375.03	5/24/2016	FD. 5/8" SMOOTH IRON ROD, FLUSH WITH SURFACE, GOOD CONDITION, PADDLE-BOARD NEARBY MARKED "SHRW 3002+50.375"	8B-29-3
1067	98470.136	154895.856	-	3006+09.47	249.92	5/24/2016	FD. 5/8" SMOOTH IRON ROD, FLUSH WITH SURFACE, GOOD CONDITION, PADDLE-BOARD NEARBY MARKED "SHRW 3006+08.51 250"	8B-29-3
1068	98190.793	154830.186	635.75	3008+50.62	249.79	5/24/2016	FD. 5/8" IRON ROD 0.1' BELOW SURFACE, GOOD CONDITION, PADDLE-BOARD NEARBY MARKED "SHRW 3008+50.250"	8B-29-3
1075	97926.380	154882.927	-	3010+96.01	167.69	5/31/2016	FD. 5/8" IRON ROD WITH 1-1/4" YPC. STAMPED "LANDMARK LS 2287" FLUSH WITH SURFACE, GOOD CONDITION	M134-19
1076	98071.503	154825.935	636.45	3009+59.89	238.94	5/31/2016	FD. 5/8" IRON ROD 0.2' ABOVE SURFACE, GOOD CONDITION	1992-0032
1080	97934.366	155177.795	-	3010+59.35	-125.00	6/1/2016	FD. 5/8" IRON ROD WITH ERODED 1-1/2" ALUM CAP NOT READABLE. SET IN CONCRETE, 0.4FT. BELOW SURFACE, GOOD CONDITION, 4"x4" WOOD WITNESS POST NEARBY MARKED "SHRW/PADDLE-BOARD NEARBY MARKED "SHRW PT 3010+58.51 125 LT"	8B-29-3
1081	98170.516	155252.928	-	3008+03.87	-170.79	6/1/2016	FD. 5/8" IRON ROD WITH 1-1/2" ALUMINUM CAP STAMPED "OREG STATE HWY DIV" 0.3' BELOW SURFACE, GOOD CONDITION, PADDLE-BOARD NEARBY MARKED "SHRW 3008+00 LT 170"	8B-29-3
1082	98344.799	155250.506	-	3006+12.24	-126.21	6/1/2016	FD. 5/8" IRON ROD WITH 1-1/2" ALUMINUM CAP STAMPED "OREG STATE HWY DIV" 0.3' BELOW SURFACE, GOOD CONDITION, PADDLE-BOARD NEARBY MARKED "SHRW 3006+08.51 LT 125"	7B-24-12
1083	98545.232	155484.213	-	3002+53.37	-231.78	6/1/2016	FD. 5/8" SMOOTH IRON ROD, BENT SOUTHERLY, 0.1' ABOVE SURFACE, POOR CONDITION, TIED WHERE ROD ENTERS GROUND, PADDLE-BOARD NEARBY MARKED "SHRW 3002+50 LT 230"	8B-29-3
1084	98722.256	155516.787	-	3000+72.59	-126.89	6/1/2016	FD. 5/8" SMOOTH IRON ROD WITH 1-1/2" ALUMINUM CAP STAMPED "OREG STATE HWY DEPT" 0.1' BELOW SURFACE, GOOD CONDITION, PADDLEBOARD NEARBY MARKED "SHRW 3000+70 LT 125"	8B-29-3
1085	98828.033	155768.971	-	2997+51.74	-157.37	6/1/2016	FD. 5/8" SMOOTH IRON ROD WITH 1-1/2" ALUMINUM CAP STAMPED "OREG STATE HWY DEPT" 0.2' ABOVE SURFACE, GOOD CONDITION, PADDLEBOARD NEARBY MARKED "SHRW 2997+50 LT 155"	8B-29-3
1086	98875.731	156016.053	-	2994+50.79	-155.07	6/1/2016	FD. 5/8" SMOOTH IRON ROD WITH 1-1/2" ALUMINUM CAP STAMPED "OREG STATE HWY DEPT" 0.2' ABOVE SURFACE, GOOD CONDITION, PADDLEBOARD NEARBY MARKED "SHRW 2994+50 LT 152.95"	8B-29-3
1087	98998.420	156446.510	-	2990+64.07	5.85	5/31/2016	FD. 5/8" IRON ROD WITH 1-1/2" ALUMINUM CAP STAMP ILLEGABLE. ROD BENT WESTERLY, TIED WHERE ROD ENTERS GROUND, POOR CONDITION, 0.6' BELOW SURFACE, PADDLE-BOARD NEARBY MARKED "SHRP EQ PT 2989+20.90AH PT 2989+26.78BK LT 88.23"	8B-29-3
1088	99152.121	157593.496	-	2979+71.62	-197.40	5/31/2016	FD. 5/8" IRON REBAR 0.5' ABOVE SURFACE, GOOD CONDITION, NO PADDLE	M55-59B
1089	99502.416	157820.282	-	2975+90.60	-180.14	6/1/2016	FD. 5/8" IRON ROD WITH 1-1/2" ALUMINUM CAP STAMPED "OREG STATE HWY DIV" FLUSH WITH SURFACE RP GOOD CONDITION, CARSONITE WITNESS MARKER NEARBY MARKED "90+708.662 54.864m LT"	I5-004AIB
1090	99644.326	158034.783	-	2973+58.19	-290.00	6/1/2016	FD. 5/8" IRON ROD WITH 1-1/2" ALUMINUM CAP STAMPED "ODOT RIGHT OF WAY" 0.1' ABOVE SURFACE, GOOD CONDITION, CARSONITE WITNESS MARKER NEARBY MARKED "90+638.557 88.392m LT"	I5-004AIB
1111	99156.246	155616.426	-	2997+80.28	203.42	8/6/2016	FD. IRON ROD WITH 2-1/2" BRASS DISK STAMPED "DOUGLAS CO SURVEYORS OFFICE 1986, T28S14S26 S25, R6W, 0.5' ABOVE SURFACE, GOOD CONDITION	M68-16
1114	99428.749	156049.187	-	2994+13.36	397.48	6/14/2016	FD. 5/8" IRON REBAR WITH 1-1/4" YPC. STAMPED "I.E. ENGINEERING" 0.4' ABOVE SURFACE, GOOD CONDITION	2003-0072A
1115	99362.526	155696.939	-	2996+72.71	375.18	6/14/2016	FD. 5/8" IRON REBAR WITH 1-1/4" YPC. STAMPED "I.E. ENGINEERING" 0.1' ABOVE SURFACE, GOOD CONDITION	2003-0072A
1116	99402.515	155738.598	-	2996+37.26	404.23	6/14/2016	FD. 5/8" IRON REBAR WITH 1-1/4" YPC. STAMPED "I.E. ENGINEERING" 0.1' ABOVE SURFACE, GOOD CONDITION	2003-0072A
1117	99440.943	155758.366	-	2996+18.30	437.71	6/14/2016	FD. 5/8" IRON REBAR WITH 1-1/4" YPC. STAMPED "I.E. ENGINEERING" FLUSH WITH SURFACE, GOOD CONDITION	2003-0072A
1118	99294.524	155441.692	-	2998+60.05	400.16	6/14/2016	FD. 5/8" IRON REBAR WITH 1-1/4" YPC. STAMPED "I.E. ENGINEERING" 0.1' ABOVE SURFACE, GOOD CONDITION	2003-0072A
1119	99184.587	155255.169	-	3000+12.79	400.17	6/14/2016	FD. 5/8" IRON REBAR WITH 1-1/4" YPC. STAMPED "I.E. ENGINEERING" 0.2' ABOVE SURFACE, GOOD CONDITION	2003-0072A
1120	99128.501	155180.968	-	3000+78.35	400.15	6/14/2016	FD. 5/8" IRON REBAR WITH 1-1/4" YPC. STAMPED "I.E. ENGINEERING" 0.2' ABOVE SURFACE, GOOD CONDITION	M144-12
1121	99100.632	155111.229	-	3001+28.03	424.29	6/14/2016	FD. 5/8" IRON REBAR WITH 1-1/4" YPC. STAMPED "I.E. ENGINEERING" FLUSH WITH SURFACE, GOOD CONDITION	M144-12
1122	99064.318	155068.044	-	3001+67.00	427.37	6/14/2016	FD. 5/8" IRON REBAR WITH 1-1/4" YPC. STAMPED "I.E. ENGINEERING" FLUSH WITH SURFACE, GOOD CONDITION	M144-12
1123	98958.516	154992.737	-	3002+56.53	410.36	6/14/2016	FD. 5/8" IRON REBAR BENT SOUTHERLY TIED WHERE ROD ENTERS GROUND, 0.3' BELOW SURFACE, POOR CONDITION, SEE SURVEY# M144-12	M144-12
1124	98797.361	154919.340	-	3003+79.39	373.15	6/14/2016	FD. 5/8" IRON REBAR WITH 1-1/4" YPC. STAMPED "I.E. ENGINEERING" CAP IS DAMAGED, ROD IS BENT SOUTHEASTERLY TIED WHERE ROD ENTERS GROUND, POOR CONDITION 0.4' BELOW SURFACE.	M144-12
1125	97976.757	154885.751	648.29	3010+45.63	169.78	6/14/2016	FD. 5/8" IRON REBAR WITH 1-1/4" YPC. STAMPED "LANDMARK LS 2287" 0.3' BELOW AC SURFACE AT EDGE OF ROBERTS MT. RD. GOOD CONDITION	M134-19
1140	99383.619	155679.048	-	2996+81.13	400.18	6/14/2016	FD. 5/8" IRON REBAR WITH 1-1/4" YPC. STAMPED "I.E. ENGINEERING" 0.2' ABOVE SURFACE, GOOD CONDITION	M144-12
D559	99016.563	156730.275	834.09	2987+78.24	46.66	3/2/2016	FD. 3" BRASS DISK IN CONCRETE WALL STAMPED "OREGON STATE HIGHWAY BENCH MARK D559 1983"	UNRECORDED
RBTS	99664.831	157830.748	949.14	2974+46.42	-104.89	2/29/2016	SET 1" DIAMETER COPPER DISK STAMPED "ODOT RBTS" IN ROCK EXPOSED ON SHELF ABOVE NORTHBOUND I-5, NEAR TOP OF ROBERTS MOUNTAIN	-

REGISTERED PROFESSIONAL LAND SURVEYOR

Marshall R. Wagstaff

OREGON JANUARY 9, 2001 MARSHALL R. WAGSTAFF 49476LS

RENEWS: JUNE 30, 2018

SI FEET OREGON DEPARTMENT OF TRANSPORTATION
 HORIZONTAL CONTROL, RECOVERY AND RETRACEMENT MAP
 I-5: ROBERTS CREEK RD. - SOUTH UMPQUA RIVER
 PACIFIC HWY. NO. 1 (I-5) M.P. 114.8 TO 120.3
 DOUGLAS COUNTY
 CAD FILE: S_K18967_CRR_01.DGN

FOR ODOT REGION 3 3500 NW. STEWART PKWY. ROSEBURG, OR. 97470

JUNE 26, 2018
 SCALE: 1" = 100'
 SHEET 10 OF 13

W1/2 SEC. 25, T. 28 S., R. 6 W., W.M.
 E1/2 SEC. 26, T. 28 S., R. 6 W., W.M.

FILED

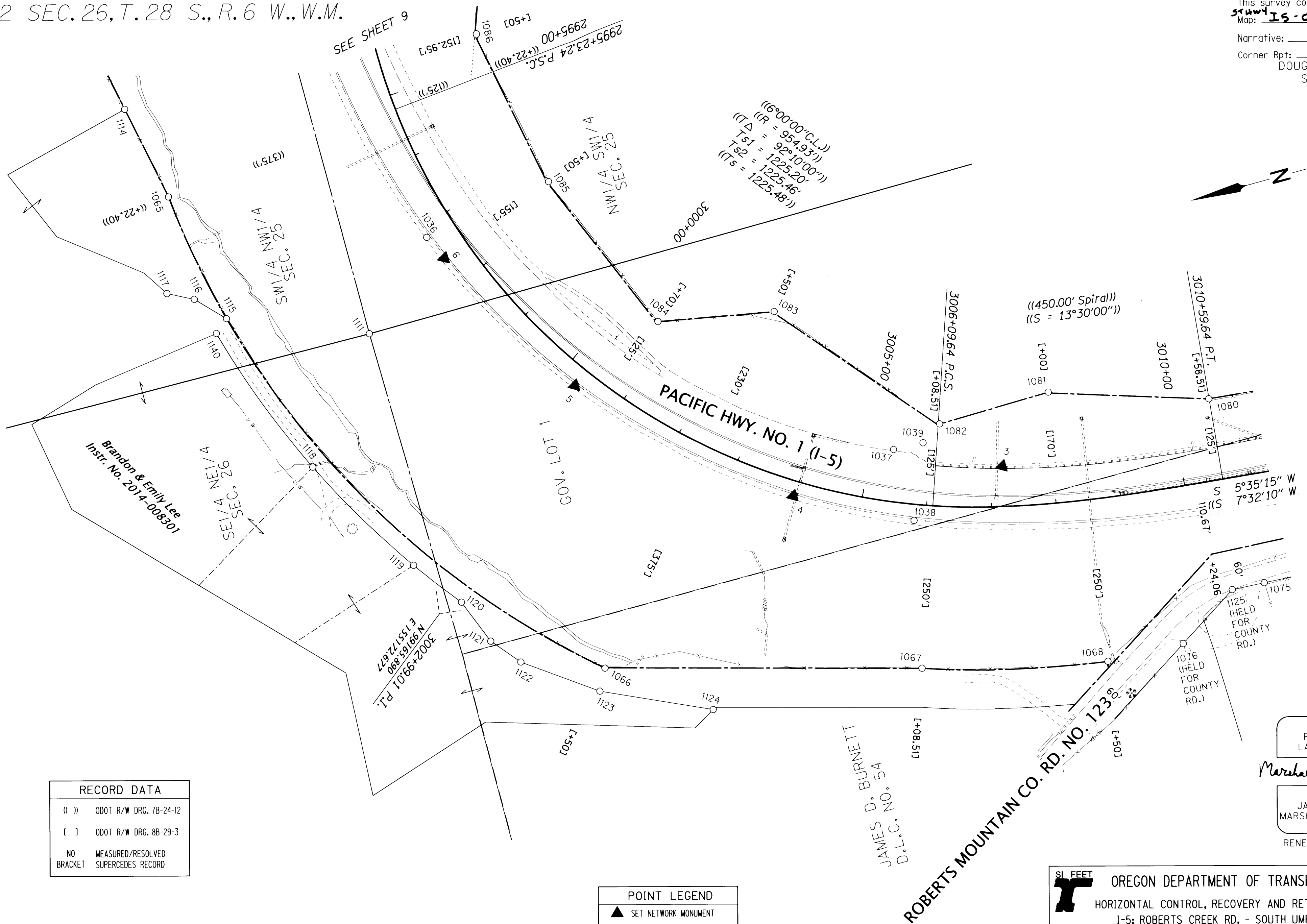
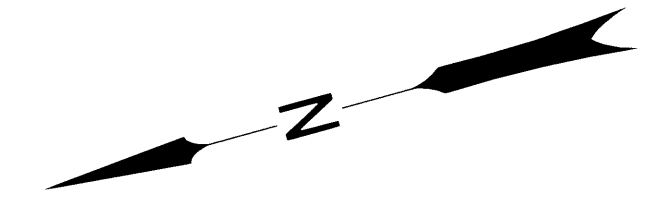
Date: 7-3-2018 By: JC

This survey consist of:

Map: IS-030 A-M

Narrative:

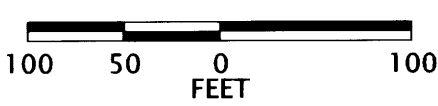
Corner Rpt:
 DOUGLAS COUNTY
 SURVEYOR



Brandon & Emily Lee
 Instr. No. 2014-008301

SEE SHEET 12

RECORD DATA	
(())	ODOT R/W DRG. 7B-24-12
[]	ODOT R/W DRG. 8B-29-3
NO BRACKET	MEASURED/RESOLVED SUPERCEDES RECORD



POINT LEGEND	
▲	SET NETWORK MONUMENT
○	FOUND MONUMENT
SEE SHEET 10 FOR MONUMENT TABLE SEE SHEET 2 FOR LINE LEGEND	

REGISTERED
 PROFESSIONAL
 LAND SURVEYOR

Marshall R. Wagstaff

OREGON
 JANUARY 9, 2001
 MARSHALL R. WAGSTAFF
 49476LS

RENEWS: JUNE 30, 2018

SI FEET
OREGON DEPARTMENT OF TRANSPORTATION
 HORIZONTAL CONTROL, RECOVERY AND RETRACEMENT MAP
 I-5: ROBERTS CREEK RD. - SOUTH UMPQUA RIVER
 PACIFIC HWY. NO. 1 (I-5) M.P. 114.8 TO 120.3
 DOUGLAS COUNTY
 CAD FILE: S_K18967_CRR_01.DGN

FOR ODOT REGION 3
 3500 NW. STEWART PKWY.
 ROSEBURG, OR. 97470

JUNE 26, 2018
 SCALE: 1" = 100'
 SHEET 11 OF 13

ST HWY 15-030 K

SE1/4 SEC. 26, T. 28 S., R. 6 W., W.M.
 NE1/4 SEC. 35, T. 28 S., R. 6 W., W.M.

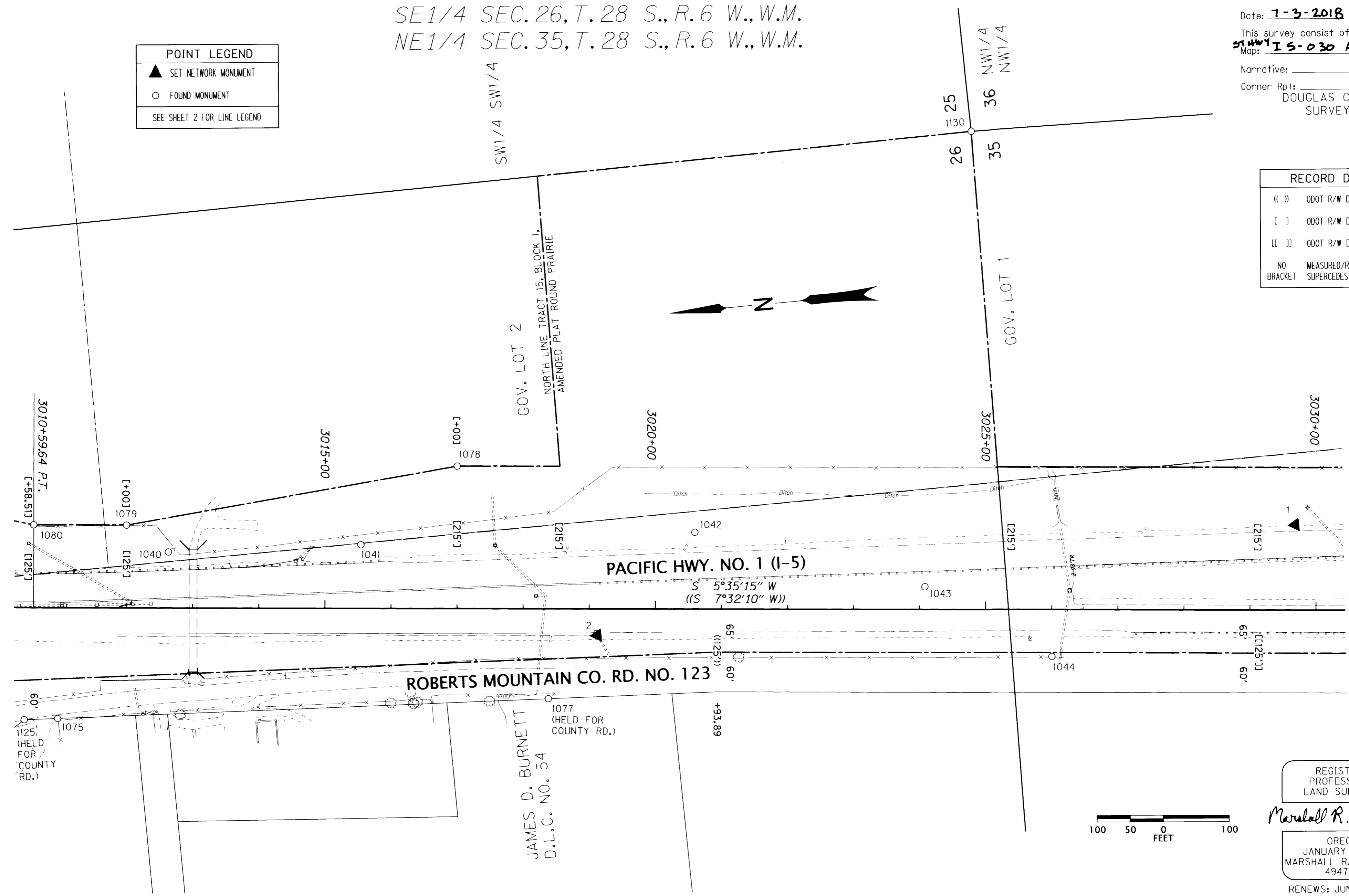
FILED
 Date: 7-3-2018 By: JC
 This survey consist of:
 Map: SHWY I5-030 A-M
 Narrative:
 Corner Rpt: DOUGLAS COUNTY SURVEYOR

POINT LEGEND	
▲	SET NETWORK MONUMENT
○	FOUND MONUMENT
SEE SHEET 2 FOR LINE LEGEND	

RECORD DATA	
(())	ODOT R/W DRG. 7B-24-12
[]	ODOT R/W DRG. 8B-29-3
(())	ODOT R/W DRG. 7B-25-10
NO BRACKET	MEASURED/RESOLVED SUPERCEDES RECORD

SEE SHEET 11

SEE SHEET 13



REGISTERED PROFESSIONAL LAND SURVEYOR

Marshall R. Wagstaff

OREGON
 JANUARY 9, 2001
 MARSHALL R. WAGSTAFF
 49476LS

RENEWS: JUNE 30, 2018

MONUMENT TABLE

PT. NO.	OCRS NORTHING	OCRS EASTING	ELEVATION	STATION	OFFSET (- IS LEFT)	DATE	DESCRIPTION	REFERENCE
1	96034.251	154995.573	645.37	3029+68.18	-128.65	2/29/2016	SET 5/8" X 30" IRON REBAR WITH A 1-1/2" DIAMETER ALUMINUM CAP STAMPED "ODOT CONTROL 1"	-
2	97101.559	154930.382	660.01	3019+12.29	40.15	2/29/2016	SET 5/8" X 30" IRON REBAR WITH A 1-1/2" DIAMETER ALUMINUM CAP STAMPED "ODOT CONTROL 2"	-
1040	97735.540	155117.576	-	3012+63.09	-84.43	5/17/2016	FD. 5/8" IRON REBAR WITH 1-1/2" ALUMINUM CAP STAMPED "OREG STATE HWY DIV" 0.2' ABOVE SURFACE, GOOD CONDITION, PADDLE-BOARD NEARBY MARKED "SHRP"	8B-29-3
1041	97444.603	155100.661	-	3015+54.30	-95.92	5/17/2016	FD. 5/8" IRON ROD WITH 1-1/2" ALUMINUM CAP STAMPED "OREG STATE HWY DIV" 0.1' BELOW SURFACE, GOOD CONDITION, PADDLE-BOARD NEARBY MARKED "SHRP"	8B-29-3
1042	96939.846	155071.103	-	3020+59.53	-115.65	5/17/2016	FD. 5/8" IRON REBAR WITH 1-1/2" ALUMINUM CAP STAMPED "OREG STATE HWY DIV" 0.3' ABOVE SURFACE, GOOD CONDITION, PADDLE-BOARD NEARBY MARKED "SHRP"	8B-29-3
1043	96601.079	154956.164	-	3024+07.88	-34.24	5/16/2016	FD. 5/8" IRON REBAR WITH 1-1/2" ALUMINUM CAP STAMPED "OREG STATE HWY DIV" FLUSH WITH A/C IN PAVED MEDIAN GOOD CONDITION, NO PADDLE-BOARD	8B-29-3
1044	96419.661	154832.584	-	3026+00.47	71.09	5/16/2016	FD. 5/8" IRON REBAR WITH 1-1/2" ALUMINUM CAP STAMPED "OREG STATE HWY DIV" FLUSH WITH SURFACE, GOOD CONDITION, PADDLE-BOARD NEARBY MARKED "SHRP"	8B-29-3
1077	97184.293	154842.261	-	3018+38.53	135.91	5/31/2016	FD. 5/8" SMOOTH IRON ROD 0.3' ABOVE SURFACE, GOOD CONDITION, METAL POST NEARBY WITH NO PADDLE	UNRECORDED
1078	97288.281	155204.801	-	3016+99.74	-214.78	5/31/2016	FD. 5/8" IRON ROD WITH 1-1/2" ALUMINUM CAP STAMP ILLEGABLE 0.1' BELOW SURFACE, GOOD CONDITION, NO PADDLE	8B-29-3
1079	97794.681	155163.866	-	3011+99.73	-124.74	6/1/2016	FD. 5/8" IRON ROD WITH 1-1/2" ALUMINUM CAP STAMPED "OREG STATE HWY DEPT" 0.1' BELOW SURFACE, GOOD CONDITION, PADDLE-BOARD NEARBY MARKED "SHRW 3012+00 125 LT"	8B-29-3
1130	96465.474	155633.414	-	3024+76.90	-721.47	6/14/2016	FD. 1-1/4" IRON PIPE WITH A 2-1/2" BRASS CAP STAMPED "COUNTY SURVEYORS OFFICE 1961 T28S, R6W S26 S25 S35 S36" 1.2' ABOVE SURFACE, GOOD CONDITION	C.S. FILE 49/139

MONUMENTS 1000 - 1044 & 1087 ARE CONSTRUCTION CENTER LINE REFERENCE POINTS

SI FEET
OREGON DEPARTMENT OF TRANSPORTATION
 HORIZONTAL CONTROL, RECOVERY AND RETRACEMENT MAP
 I-5: ROBERTS CREEK RD. - SOUTH UMPQUA RIVER
 PACIFIC HWY. NO. 1 (I-5) M.P. 114.8 TO 120.3
 DOUGLAS COUNTY
 CAD FILE: S_K18967_CRR_01.DGN

FOR ODOT REGION 3
 3500 NW. STEWART PKWY.
 ROSEBURG, OR. 97470

JUNE 26, 2018
 SCALE: 1" = 100'
 SHEET 12 OF 13

ST HWY I5-030 L

NE 1/4 SEC. 35, T. 28 S., R. 6 W., W.M.

FILED

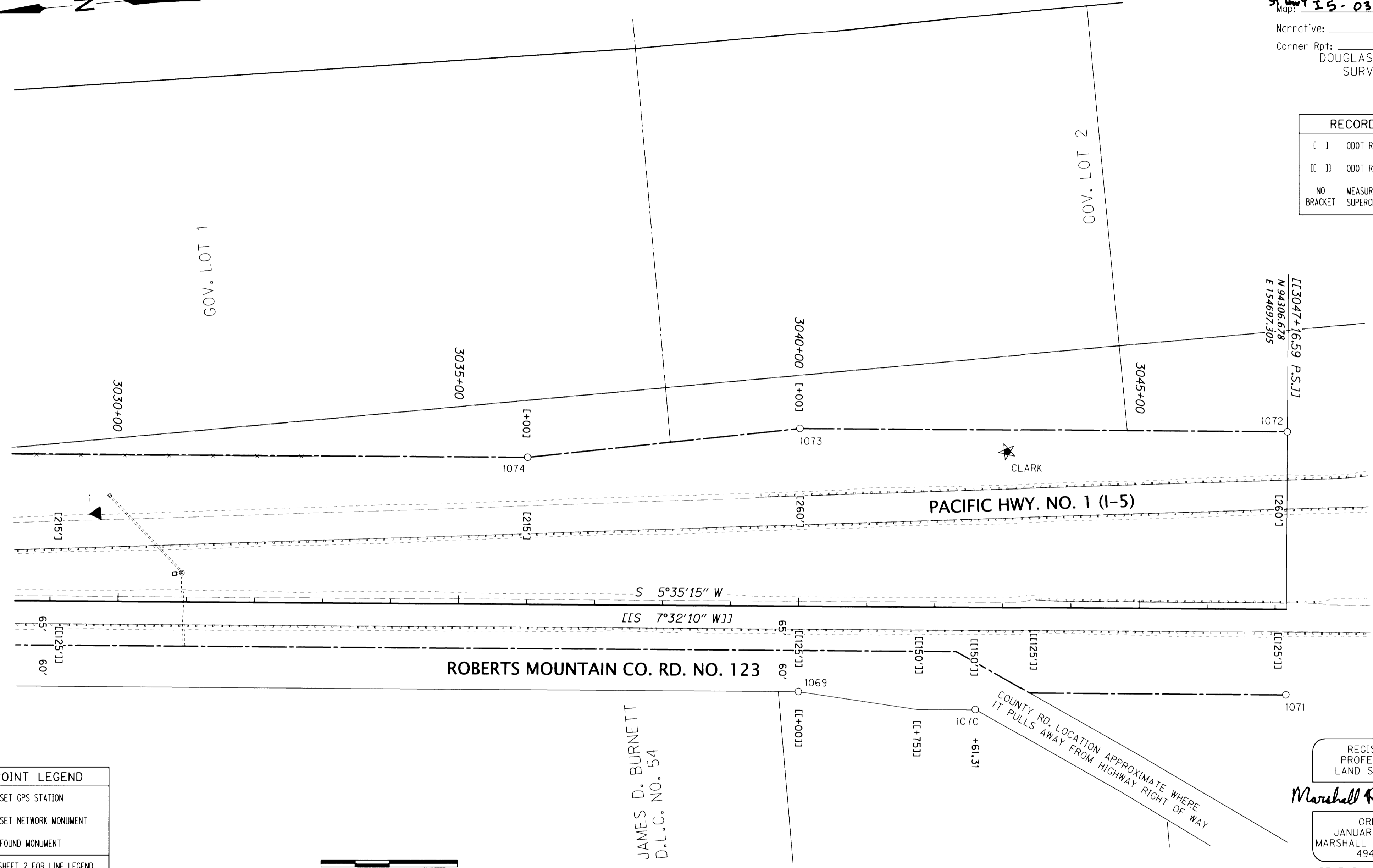
Date: 7-3-2018 By: JC

This survey consist of:
Map: ST HWY I5-030 A-M

Narrative:

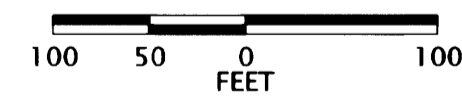
Corner Rpt:
DOUGLAS COUNTY
SURVEYOR

RECORD DATA	
[]	ODOT R/W DRG. 88-29-3
[]	ODOT R/W DRG. 78-25-10
NO	MEASURED/RESOLVED
BRACKET	SUPERCEDES RECORD



SEE SHEET 12

POINT LEGEND	
★	SET GPS STATION
▲	SET NETWORK MONUMENT
○	FOUND MONUMENT
SEE SHEET 2 FOR LINE LEGEND	



REGISTERED
PROFESSIONAL
LAND SURVEYOR

Marshall R. Wagstaff

OREGON
JANUARY 9, 2001
MARSHALL R. WAGSTAFF
49476LS

RENEWS: JUNE 30, 2018

MONUMENT TABLE								REFERENCE
PT. NO.	OCRS NORTHING	OCRS EASTING	ELEVATION	STATION	OFFSET (- IS LEFT)	DATE	DESCRIPTION	
1069	95031.845	154642.669	-	3040+00.18	124.98	5/24/2016	FD. 5/8" SMOOTH IRON ROD, 0.3' ABOVE SURFACE, GOOD CONDITION, PADDLE-BOARD NEARBY MARKED "SHRW POT 3040+00 130"	88-29-3
1070	94775.276	154592.953	-	3042+60.37	149.48	5/25/2016	FD. 5/8" SMOOTH IRON ROD, 0.4' ABOVE SURFACE, POOR CONDITION, LEANING SOUTHERLY, TIED WHERE ROD ENTERS GROUND, PADDLE-BOARD NEARBY MARKED "SHRW POT 3042+60 150"	88-29-3
1071	94318.776	154572.999	-	3047+16.65	124.89	5/25/2016	FD. 5/8" SMOOTH IRON ROD 0.1' ABOVE SURFACE IN CONCRETE PEDESTAL, GOOD CONDITION, PADDLE-BOARD NEARBY ILLEGABLE	88-29-3
1072	94281.514	154955.861	-	3047+16.46	-259.78	5/25/2016	FD. 5/8" IRON ROD WITH 1-1/2" ALUMINUM CAP STAMPED "OREG STATE HWY DEPT" FLUSH WITH SURFACE, GOOD CONDITION, PADDLE-BOARD NEARBY MARKED "SHRW P.S. 3047+16.59 260"	88-29-3
1073	94994.498	155025.958	-	3040+00.03	-260.12	5/25/2016	FD. 5/8" SMOOTH IRON ROD WITH 1-1/2" ALUMINUM CAP STAMPED "OREG STATE HWY DEPT" 0.2' ABOVE SURFACE, POOR CONDITION, BENT SOUTHWESTERLY, TIED WHERE ROD ENTERS GROUND, PADDLEBOARD NEARBY MARKED "SHRW 3040+00 260"	88-29-3
1074	95396.796	155019.986	-	3036+00.23	-215.01	5/25/2016	FD. 5/8" IRON ROD WITH 1-1/2" ALUMINUM CAP STAMPED "OREG STATE HWY DEPT" 0.1' BELOW SURFACE, GOOD CONDITION, PADDLE-BOARD NEARBY MARKED "SHRW 3036+00 215"	88-29-3
CLARK	94694.190	154964.431	665.96	3043+04.91	-228.13	2/29/2016	SET 5/8" X 30" IRON REBAR WITH A 1-1/2" DIAMETER BRASS CAP STAMPED "ODOT CONTROL CLARK" STABILIZED IN CONCRETE	-

SI FEET OREGON DEPARTMENT OF TRANSPORTATION
 HORIZONTAL CONTROL, RECOVERY AND RETRACEMENT MAP
 I-5: ROBERTS CREEK RD. - SOUTH UMPQUA RIVER
 PACIFIC HWY. NO. 1 (I-5) M.P. 114.8 TO 120.3
 DOUGLAS COUNTY
 CAD FILE: S_K18967_CRR_01.DGN

FOR ODOT REGION 3
 3500 NW. STEWART PKWY.
 ROSEBURG, OR. 97470

JUNE 26, 2018
 SCALE: 1" = 100'
 SHEET 13 OF 13

ST HWY I5-030 M