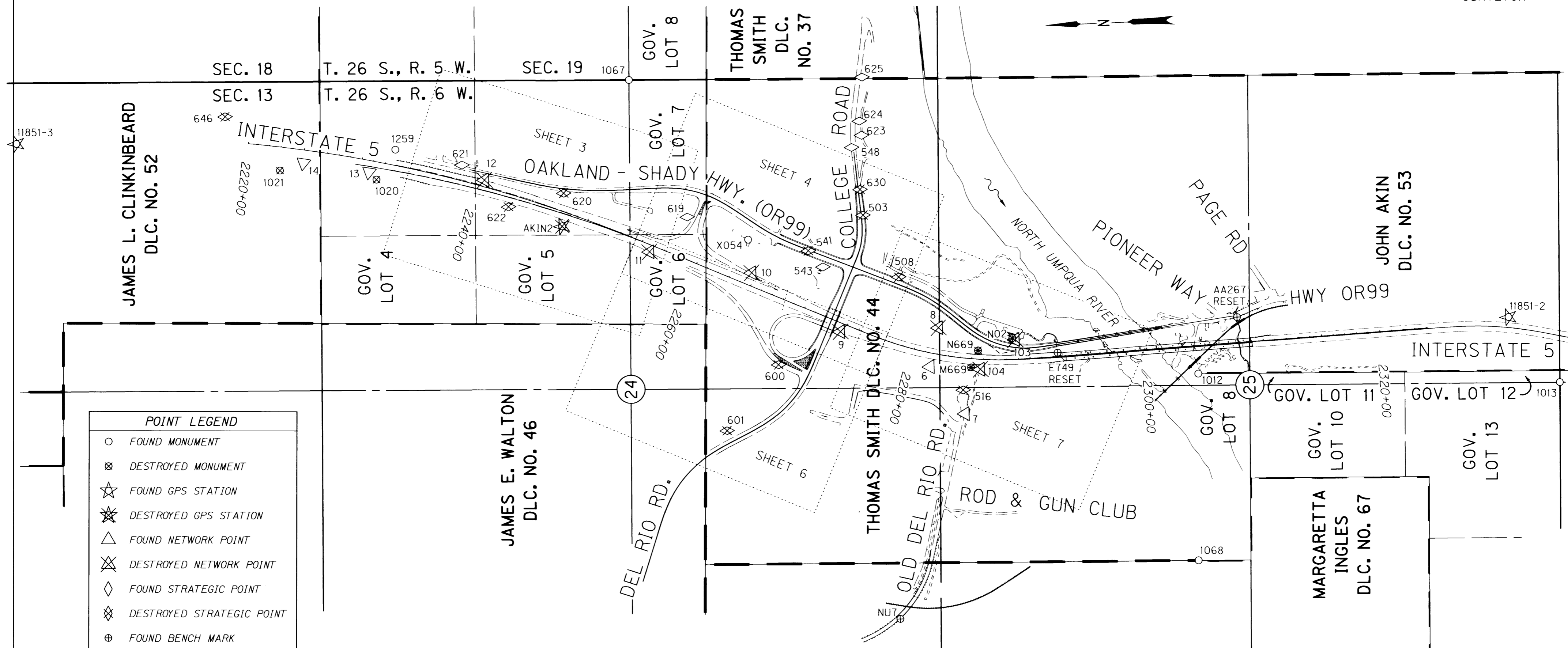


SEC. 13, 24, & 25, T26S, R6W, W.M.
SEC. 19, T26S, R5W, W.M.

FILED
Date: 4-1-2015 By: JC
This survey consist of:
Map: IS-028A-4
Narrative: _____
Corner Rpt: _____
DOUGLAS COUNTY
SURVEYOR

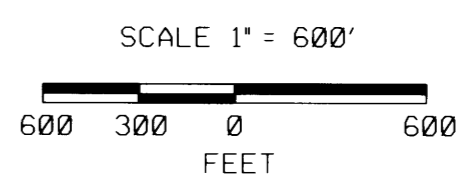


POINT LEGEND

- FOUND MONUMENT
- ⊗ DESTROYED MONUMENT
- ☆ FOUND GPS STATION
- ⊗ DESTROYED GPS STATION
- △ FOUND NETWORK POINT
- ⊗ DESTROYED NETWORK POINT
- ◇ FOUND STRATEGIC POINT
- ⊗ DESTROYED STRATEGIC POINT
- ⊕ FOUND BENCH MARK
- ⊗ DESTROYED BENCH MARK

FOR BOUNDARY LINE
LEGEND SEE SHEET 2

CONTROL SCHEMATIC & SHEET LAYOUT DIAGRAM



REGISTERED
PROFESSIONAL
LAND SURVEYOR
Marshall R. Wagstaff
OREGON
JANUARY 9, 2001
MARSHALL R. WAGSTAFF
49476LS
RENEWS: JUNE 30, 2016

MONUMENTS NOT SHOWN ON INDIVIDUAL SHEETS

PT. NO.	LDPC NORTHING	LDPC EASTING	ELEVATION	STATION	OFFSET (- IS LEFT)	DATE	DESCRIPTION	REFERENCE
13	608435.152	4163315.170	521.07	-	-	12/18/2014	FD. 1 1/8" BRASS PLUG IN CONC. STAMPED "ODOT 13"	ST HWY 15-016
14	608991.027	4163416.185	533.78	-	-	12/18/2014	FD. 1 1/8" BRASS PLUG IN CONC. STAMPED "ODOT 14"	ST HWY 15-016
548	604304.010	4163359.226	582.25	-	-	12/18/2014	FD. PK NAIL AND SHINER IN A.C. SHINER STAMPED "O.D.O.T. 548"	ST HWY 15-016
623	604214.504	4163459.353	601.11	-	-	12/18/2014	FD. MAG NAIL AND WASHER STAMPED "O.D.O.T. 623" IN A.C. DRIVEWAY	ST HWY 15-026
624	604227.978	4163581.284	594.78	-	-	12/18/2014	FD. 5/8" IRON REBAR 30" LONG WITH 1 1/2" BRASS CAP STAMPED "ODOT CONTROL 624" 0.1 FT. BELOW SURFACE	ST HWY 15-026
625	604189.733	4163955.424	556.16	-	-	12/18/2014	FD. 5/8" IRON REBAR 30" LONG WITH 1 1/2" BRASS CAP STAMPED "ODOT CONTROL 625" 0.1 FT. BELOW SURFACE	ST HWY 15-026
646	609643.409	4163837.634	-	-	-	2/4/2015	DESTROYED PK NAIL AND WASHER STAMPED "O.D.O.T. 646"	ST HWY 15-026
1012	601418.313	4161308.609	-	-	-	5/13/2003	FD. 2 1/2" BRASS CAP STAMPED "COUNTY SURVEYORS OFFICE T26S R6W W.C. N.W. COR. DLC 53 1954" 0.8 FT. ABOVE SURFACE GOOD CONDITION	M 8-12
1013	598330.864	4161112.352	-	-	-	5/7/2003	FD. 5/8" IRON REBAR 0.3 FT. ABOVE SURFACE. GOOD CONDITION	CS 52/87
1020	608372.495	4163247.287	-	-	-	12/18/2014	DESTROYED 5/8" IRON ROD 0.3 FT. ABOVE SURFACE, GOOD CONDITION, PADDLE NEARBY MARKED "SHRW 2231+50 150 RT"	DRG 7B-7-10
102	609193.466	4163358.024	-	-	-	12/18/2014	DESTROYED 5/8" IRON ROD 0.2 FT. ABOVE SURFACE, GOOD CONDITION, PADDLE BOARD NEARBY MARKED "SHRW PSC 2223+09.42 200 RT"	DRG 7B-7-10
1067	606182.675	4164011.990	-	-	-	5/13/2003	FD. 2 1/2" BRASS CAP STAMPED "COUNTY SURVEYORS OFFICE T26S R6/5W 1/4 S24 S19 1964 0.3 FT. BELOW SURFACE GOOD CONDITION METAL FENCE POST NEARBY	DCSO 1964
1068	601478.642	4159718.974	-	-	-	5/13/2003	FD. 2" INSIDE DIA. IRON PIPE 1.2 FT. BELOW SURFACE. GOOD CONDITION.	CS 67/25-17
1259	608201.265	4163496.622	-	-	-	12/18/2014	FD. 5/8" IRON REBAR 0.1 FT. BELOW SURFACE GOOD CONDITION	M 63-34
11851-2	598747.547	4161683.438	523.81	-	-	12/18/2014	FD. 3" BRASS DISK IN CONC. STAMPED "OREGON DOT GEODETIC CONTROL PT. DO NOT DISTURB 11851-2 2003" GOOD CONDITION	M 143-67
11851-3	611434.518	4163676.614	-	-	-	12/18/2014	FD. 3" BRASS DISK IN CONC. STAMPED "OREGON DOT GEODETIC CONTROL PT. DO NOT DISTURB 11851-3 2003" GOOD CONDITION	M 143-67
AA267 RESET	-	-	455.44	-	-	12/18/2014	FD. 3" BRASS DISK AT SW CORNER OF HWY 99 BRIDGE OVER SMALL CREEK BETWEEN PAGE RD. AND PIONEER WAY STAMPED "OREGON D.O.T. BENCHMARK DO NOT DISTURB AA267 RESET 2007" REPLACES DESTROYED AA267 USING 3RD ORDER LEVELS BY ODOT GEOMETRONICS	NGS 1925
NU7	604047.868	4159322.418	509.11	-	-	12/18/2014	FD. 3" DIA. BRASS DISK IN CONCRETE. STAMPED "NU7 DOUGLAS SURVEYORS OFFICE 1972" FLUSH WITH SURFACE IN GOOD CONDITION	DCSO 1972

SI FEET
OREGON DEPARTMENT OF TRANSPORTATION
RIGHT-OF-WAY BOUNDARY MONUMENTATION MAP
15: DEL RIO ROAD / WINCHESTER INTERCHANGE
PACIFIC HIGHWAY NO. 1, I-5, M.P. 128.26 - 130.53
& OAKLAND - SHADY HIGHWAY, OR99
DOUGLAS COUNTY
FILE:15186RW.DGN MODEL: RWM
FOR ODOT REGION 3 MAR. 30, 2015
3500 NW. STEWART PKWY. SCALE: 1" = 600'
ROSEBURG, OR. 97470 SHEET 1 OF 8