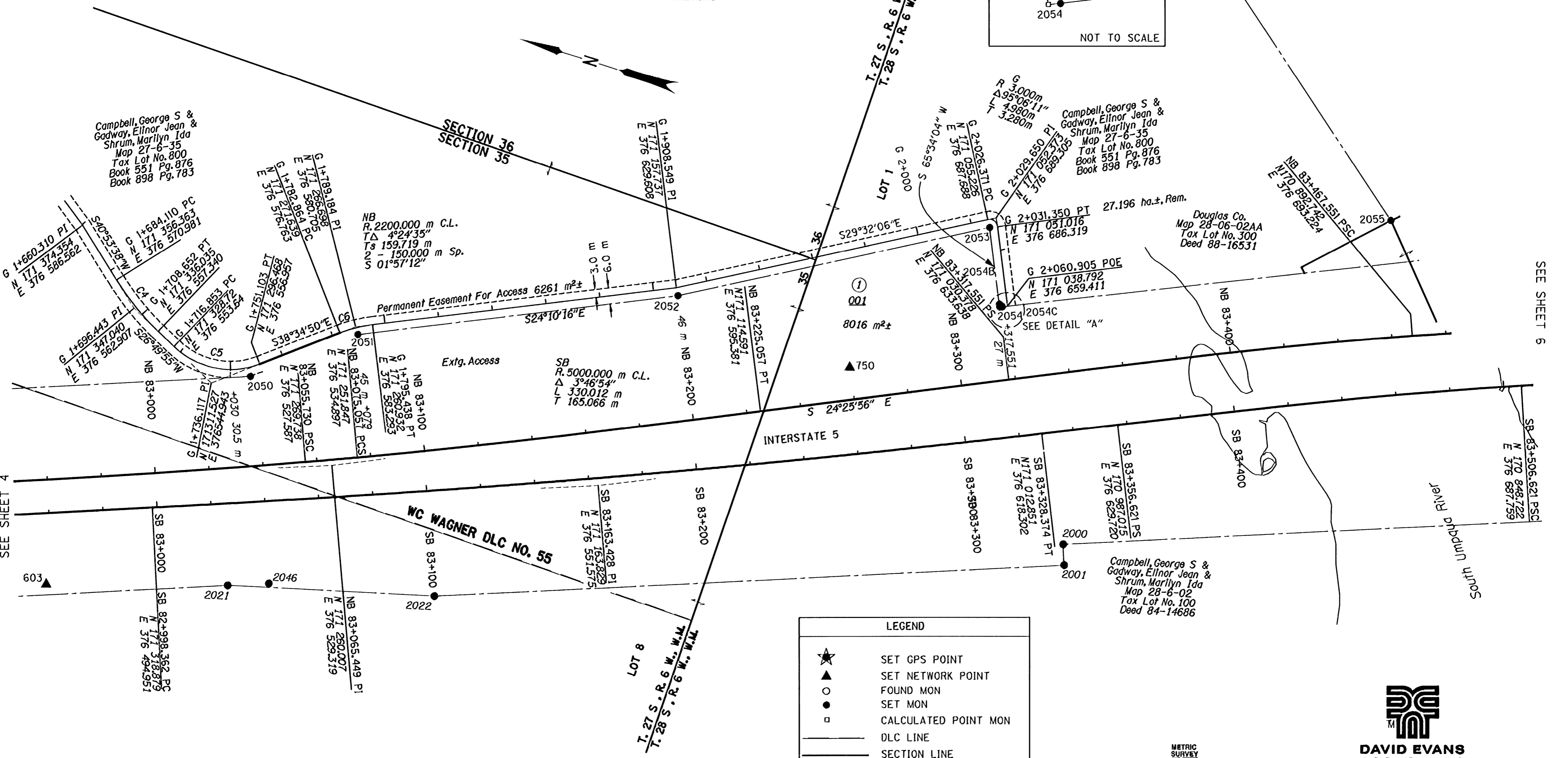
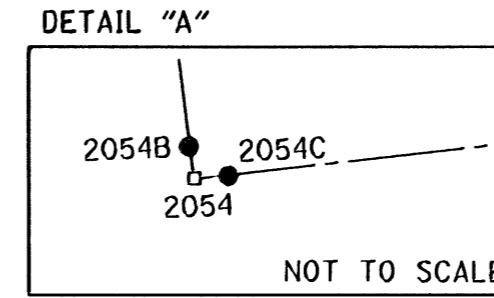
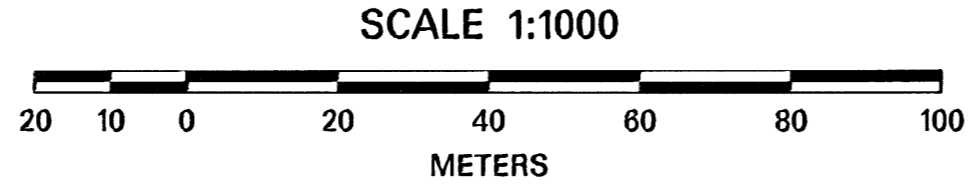


ACCESS EASEMENT BEARING TABLE

CURVES	RADIUS	CHORD LENGTH	BEARING	CURVE LENGTH	DELTA ANGLE
C4	100m	24.481m	N38°52'41"W	24.543m	14°03'43"
C5	30m	32.420m	S05°52'27"E	34.250m	65°24'45"
C6	50m	12.541m	S31°22'33"E	12.575m	14°24'34"

SE 1/4 SEC. 35, T. 27 S., R. 6 W., W.M.  
 NE 1/4 SEC. 2, T. 28 S., R. 6 W., W.M.  
 SW 1/4 SEC. 36, T. 27 S., R. 6 W., W.M.

FILED  
 Date 12-2-2011 By JC  
 This survey consists of:  
 Map 51 Hwy 15-027 A-1  
 Narrative:  
 Corner Rpt:  
 DOUGLAS COUNTY SURVEYOR



SEE SHEET 4

SEE SHEET 6

LEGEND

- ★ SET GPS POINT
- ▲ SET NETWORK POINT
- FOUND MON
- SET MON
- CALCULATED POINT MON
- DLC LINE
- SECTION LINE
- - - EASEMENT LINE
- - - R/W LINE
- NEW R/W LINE



TO CONVERT METERS TO FEET DIVIDE BY 0.3048  
 FILE NAME: 1240IPOSTMON.DGN



DAVID EVANS AND ASSOCIATES INC.  
 530 CENTER STREET NE, SUITE 605  
 SALEM OREGON 97301  
 PHONE: 503.361.8635

SET MONUMENT LIST

PT. NO.	LDP NORTHING	LDP EASTING	STATION/OFFSET	DATE	DESCRIPTION & REFERENCE DOCUMENTS
2050	171298.490	376551.503	NB 83+037.76 32.87m LT	07/25/11	SET 16MM X 762MM IR W/ YPC "DEA INC."
2051	171265.117	376578.123	NB 83+079.41 45.01m LT	07/25/11	SET 16MM X 762MM IR W/ YPC "DEA INC."
2052	171156.383	376626.935	NB 83+200.01 46.01m LT	07/25/11	SET 16MM X 762MM IR W/ YPC "DEA INC."
2053	171053.750	376685.080	NB 83+317.55 56.50m LT	07/25/11	SET 16MM X 762MM IR W/ YPC "DEA INC."
2054	171041.550	376658.220	NB 83+317.55 27.00m LT	07/25/11	CALCULATED POINT "NOT SET"
2054B	171041.966	376659.133	NB 83+318.55 26.99m LT	07/25/11	SET 16MM X 762MM IR W/ YPC "DEA INC."
2054C	171040.632	376658.621	NB 83+317.55 28.00m LT	07/25/11	SET 16MM X 762MM IR W/ YPC "DEA INC."
2055	170912.890	376731.460	NB 83+462.86 42.96m LT	07/25/11	SET 16MM X 762MM IR W/ YPC "DEA INC."

REGISTERED PROFESSIONAL LAND SURVEYOR  
  
 OREGON  
 JULY 11, 2005  
 F. DANIEL ADSIT  
 75495LS  
 EXPIRES: 12/31/2011

OREGON DEPARTMENT OF TRANSPORTATION

POST CONSTRUCTION MONUMENTATION SURVEY  
 I-5 O'XING: SOUTH UMPQUA RIVER AND  
 OR99 PACIFIC HWY (SHADY)  
 DOUGLAS COUNTY, OREGON  
 REGION 3 HEADQUARTERS/DISTRICT 7  
 3500 NW STEWART PARKWAY  
 ROSEBURG, OR 97470  
 OCTOBER 31, 2011  
 SCALE: 1:1000  
 SHEET 5 OF 9

ST. HWY. I5 -027 E