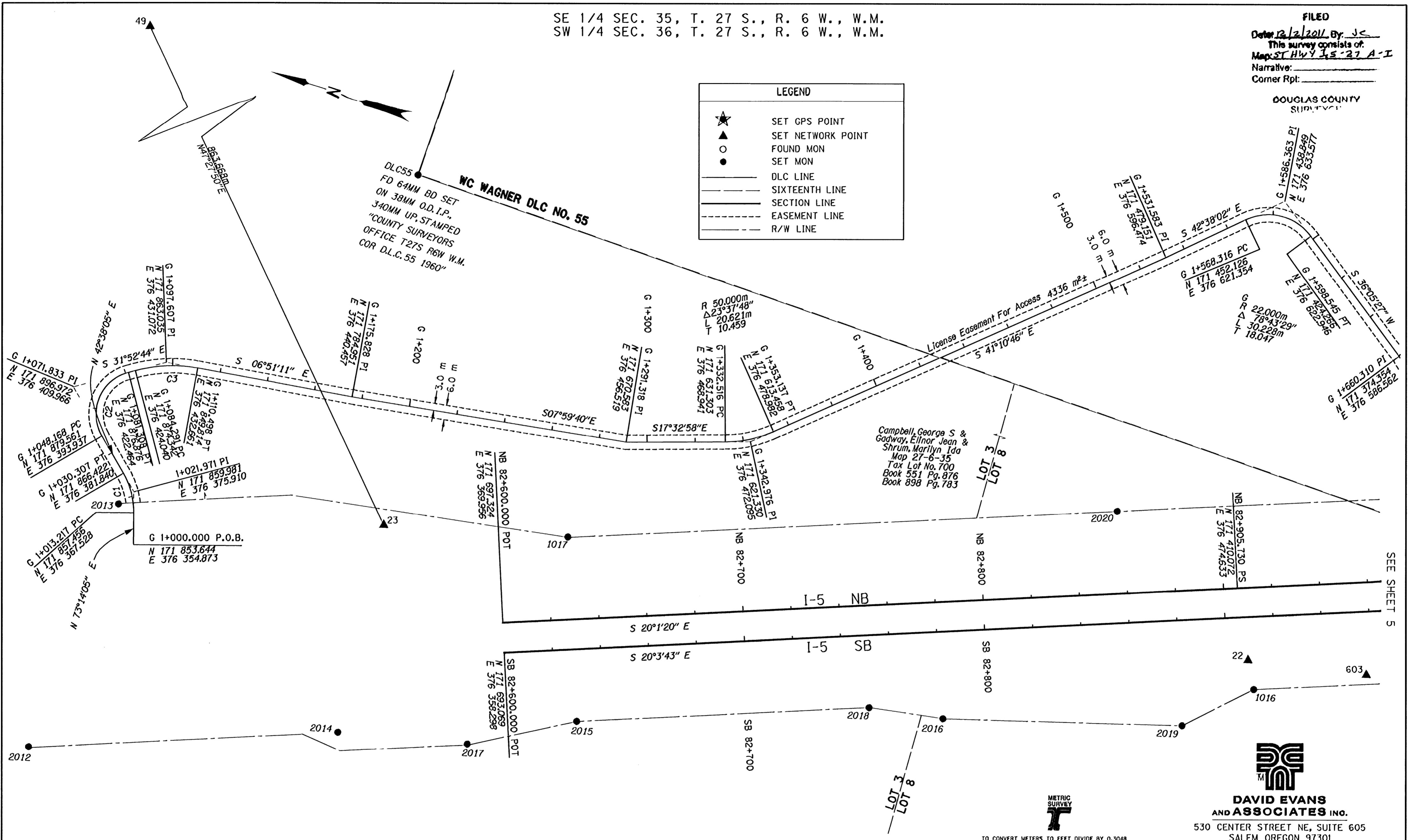


SE 1/4 SEC. 35, T. 27 S., R. 6 W., W.M.
 SW 1/4 SEC. 36, T. 27 S., R. 6 W., W.M.

FILED
 Date: 12/2/2011 By: JC
 This survey consists of:
 Map: ST HWY 15-27 A-I
 Narrative:
 Corner Rpt:

DOUGLAS COUNTY
 SURVEYOR

LEGEND	
★	SET GPS POINT
▲	SET NETWORK POINT
○	FOUND MON
●	SET MON
—	DLC LINE
---	SIXTEENTH LINE
----	SECTION LINE
- - - -	EASEMENT LINE
- · - · -	R/W LINE



SEE SHEET 5



DAVID EVANS AND ASSOCIATES INC.
 530 CENTER STREET NE, SUITE 605
 SALEM OREGON 97301
 PHONE: 503.361.8635



TO CONVERT METERS TO FEET DIVIDE BY 0.3048
 FILE NAME: 1240IPOSTMON.DGN

OREGON DEPARTMENT OF TRANSPORTATION

POST CONSTRUCTION MONUMENTATION SURVEY
 I-5 O'XING: SOUTH UMPQUA RIVER AND
 OR99 PACIFIC HWY (SHADY)
 DOUGLAS COUNTY, OREGON

REGISTERED PROFESSIONAL LAND SURVEYOR

 OREGON
 JULY 11, 2005
 F. DANIEL ADSIT
 75495LS
 EXPIRES: 12/31/2011

REGION 3 HEADQUARTERS/DISTRICT 7
 3500 NW STEWART PARKWAY
 ROSEBURG, OR 97470

OCTOBER 31, 2011
 SCALE: 1:1000
 SHEET 4 OF 9

SCALE 1:1000

