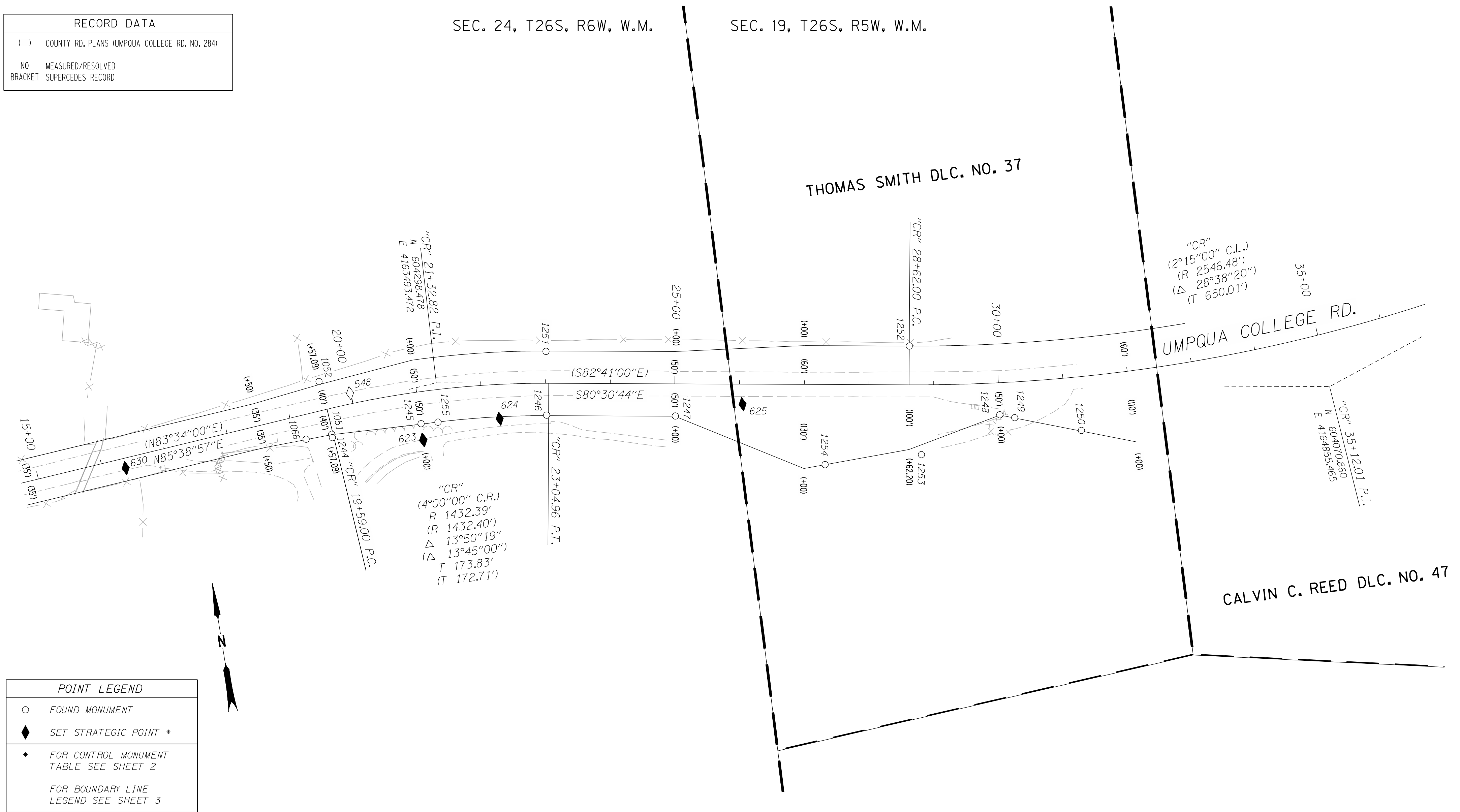


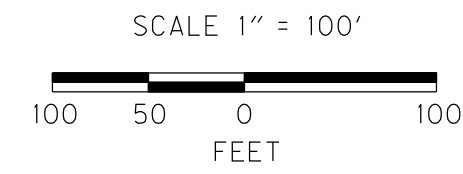
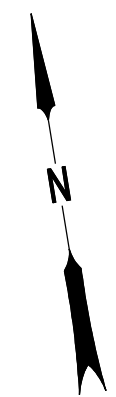
RECORD DATA	
()	COUNTY RD. PLANS (UMPOUA COLLEGE RD. NO. 284)
NO	MEASURED/RESOLVED
BRACKET	SUPERCEDES RECORD

SEC. 24, T26S, R6W, W.M.

SEC. 19, T26S, R5W, W.M.




POINT LEGEND	
○	FOUND MONUMENT
◆	SET STRATEGIC POINT *
* FOR CONTROL MONUMENT TABLE SEE SHEET 2	
FOR BOUNDARY LINE LEGEND SEE SHEET 3	



RECOVERED MONUMENTS

PT. NO.	LDP. NORTHING	LDP. EASTING	LINE	STATION	OFFSET (- IS LT.)	DATE	DESCRIPTION	REFERENCE
1051	604245.902	4163321.017	"CR"	19+56.88	39.34	5/8/2003	FD. 5/8" IRON REBAR WITH 1 1/4" PLASTIC CAP 0.7 FT. ABOVE SURFACE FAIR CONDITION	CO. RD. 284
1052	604329.551	4163314.760	"CR"	19+56.99	-44.54	5/8/2003	FD. 5/8" IRON REBAR 0.3 FT. ABOVE SURFACE GOOD CONDITION WOOD WITNESS POST NEARBY BROKEN LYING ON GROUND	CO. RD. 284
1066	604244.714	4163280.843	"CR"	19+16.73	37.48	5/8/2003	FD. 5/8" IRON ROD WITH 1 1/4" PLASTIC CAP 0.8 FT. ABOVE SURFACE FAIR CONDITION	CO. RD. 284
1244	604240.704	4163321.249	"CR"	19+56.72	44.54	3/2/2006	FD. 3/4" IRON REBAR 0.1 FT. BELOW SURFACE BENT NORTH TIED WHERE ENTERS GROUND COUNTY R/W STATION "L4" 19+57.09 PC 40.00 FT. RT.	CO. RD. 284
1245	604239.864	4163460.131	"CR"	21+00.20	49.20	3/2/2006	FD. 5/8" IRON REBAR WITH 1 1/4" PLASTIC CAP STAMPED "R.WARE LS 1005" 0.2 FT. BELOW SURFACE GOOD CONDITION	M 100-59
1246	604221.736	4163653.750	"CR"	23+01.76	49.27	3/2/2006	FD. 3/4" IRON REBAR 1.8 FT. BELOW SURFACE GOOD CONDITION COUNTY R/W STATION "L4" 23+00.84 PT 50.00 FT. RT.	CO. RD. 284
1247	604188.479	4163849.900	"CR"	25+00.82	49.74	3/2/2006	FD. 5/8" IRON REBAR 0.2 FT. ABOVE SURFACE BENT SOUTH TIED WHERE ENTERS GROUND	M 100-59
1248	604109.780	4164345.258	"CR"	29+99.76	49.51	3/2/2006	FD. 5/8" IRON REBAR WITH 1 1/4" PLASTIC CAP STAMPED "BENTZ SUR. INC." 0.8 FT. ABOVE SURFACE GOOD CONDITION	M 90-64
1249	604101.676	4164367.275	"CR"	30+22.06	55.21	3/2/2006	FD. 5/8" IRON REBAR WITH DAMAGED 1 1/4" PLASTIC CAP FLUSH WITH A.C. DRIVEWAY GOOD CONDITION	VOL.17 PG.63A
1250	604065.622	4164465.953	"CR"	31+20.73	82.93	3/2/2006	FD. 5/8" IRON REBAR WITH REMAINS OF 1 1/4" PLASTIC CAP NEARBY 0.4 FT. ABOVE SURFACE GOOD CONDITION	M 90-64
1251	604319.164	4163668.614	"CR"	23+00.62	-49.28	3/2/2006	FD. 3/4" IRON REBAR 0.2 FT. ABOVE SURFACE GOOD CONDITION 4" X 4" WOOD WITNESS POST NEARBY COUNTY R/W STATION "L4" 23+00.84 PT 50.00 FT. LT.	CO. RD. 284
1252	604237.184	4164224.236	"CR"	28+62.00	-60.00	3/2/2006	FD. 5/8" IRON REBAR 0.2 FT. ABOVE SURFACE GOOD CONDITION COUNTY R/W STATION "L5" 28+62.20 PC 60.00 FT. LT.	CO. RD. 284
1253	604068.450	4164215.837	"CR"	28+80.74	107.88	3/2/2006	FD. 5/8" IRON REBAR WITH 1 1/4" PLASTIC CAP STAMPED "I.E.ENG." 0.5 FT. ABOVE SURFACE BENT EAST TIED WHERE ENTERS GROUND POOR CONDITION	VOL.17 PG.63A
1254	604077.076	4164066.350	"CR"	27+32.67	123.94	3/2/2006	FD. 5/8" IRON REBAR WITH 1 1/4" PLASTIC CAP STAMPED "I.E.ENG." FLUSH WITH SURFACE GOOD CONDITION	VOL.17 PG.63A
1255	604238.050	4163486.258	"CR"	21+27.32	50.17	3/2/2006	FD. 5/8" IRON REBAR WITH 1 1/4" DAMAGED PLASTIC CAP 0.3 FT. ABOVE SURFACE BENT TO NORTH TIED WHERE ENTERS GROUND POOR CONDITION	M 120-26


OREGON DEPARTMENT OF TRANSPORTATION
 CONTROL, RECOVERY, AND RETRACEMENT MAP
 I5: DEL RIO ROAD / WINCHESTER INTERCHANGE
 PACIFIC HIGHWAY NO. 1, 1-5, M.P. 128.26 - 130.53
 & OAKLAND - SHADY HIGHWAY, OR99
 DOUGLAS COUNTY
 FILE:15186RW.DGN MODEL: CRR
 FOR ODOT REGION 3 NOV. 15, 2011
 3500 NW. STEWART PKWY. SCALE: 1" = 100'
 ROSEBURG, OR. 97470 SHEET 11 OF 11