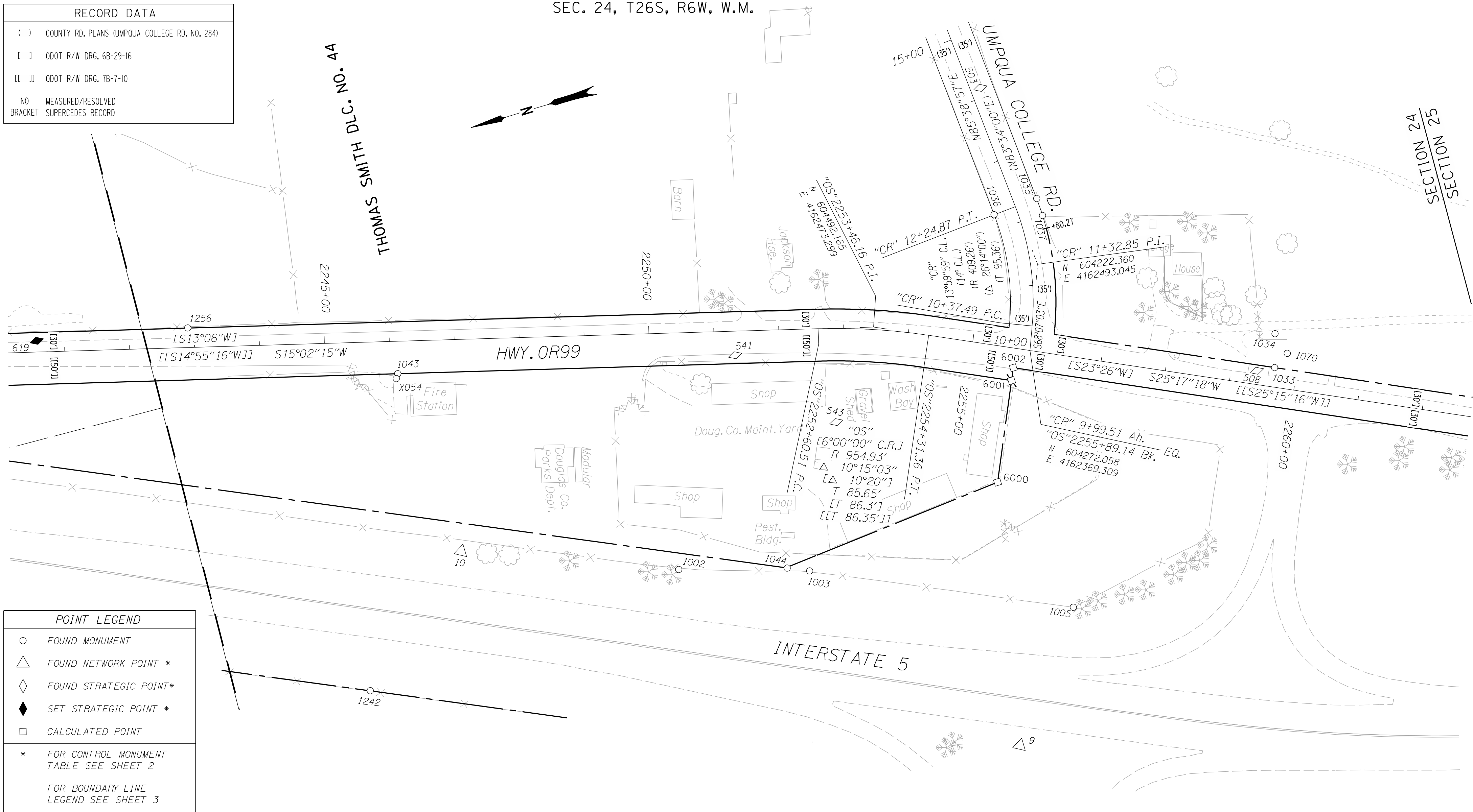


SEC. 24, T26S, R6W, W.M.

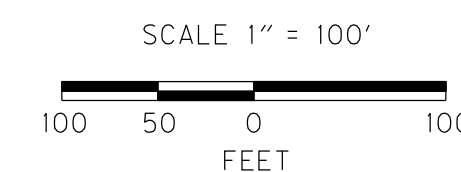
RECORD DATA	
()	COUNTY RD. PLANS (UMPOUA COLLEGE RD. NO. 284)
[]	ODOT R/W DRG. 6B-29-16
[[]]	ODOT R/W DRG. 7B-7-10
NO	MEASURED/RESOLVED
BRACKET	SUPERCEDES RECORD



POINT LEGEND	
○	FOUND MONUMENT
△	FOUND NETWORK POINT *
◇	FOUND STRATEGIC POINT*
◆	SET STRATEGIC POINT *
□	CALCULATED POINT
* FOR CONTROL MONUMENT TABLE SEE SHEET 2	
FOR BOUNDARY LINE LEGEND SEE SHEET 3	

RECOVERED MONUMENTS

PT. NO.	LDP. NORTHING	LDP. EASTING	ELEV.	LINE	STATION	OFFSET (- IS LT.)	DATE	DESCRIPTION	REFERENCE
1002	604887.195	4162202.082					5/12/2003	FD. 5/8" IRON ROD 0.1 FT. BELOW SURFACE GOOD CONDITION PADDLE BOARD NEARBY MARKED "SHRW 2268+00 125 LT."	7B-7-10
1003	604694.713	4162141.861					5/12/2003	FD. 5/8" IRON ROD GOOD CONDITION PADDLE BOARD NEARBY MARKED "SHRW 2270+00 150 LT"	7B-7-10
1005	604322.039	4161971.256					5/12/2003	FD. 5/8" IRON ROD 0.2 FT. ABOVE SURFACE IN GOOD CONDITION PADDLE BOARD NEARBY MARKED "SHRW 2274+09.68 150 LT."	7B-7-10
1033	603918.865	4162235.623		"OS"	2259+65.59	-30.00	5/8/2003	FD. 1 1/4" I.D. IRON PIPE 1.8 FT. BELOW SURFACE GOOD CONDITION	M 39-70
1034	603903.145	4162285.396					5/8/2003	FD. 5/8" IRON REBAR WITH DAMAGED 1 1/4" PLASTIC CAP 0.5 FT. ABOVE SURFACE IN GOOD CONDITION	M 90-64
1035	604194.554	4162590.631		"CR"	12+24.72	35.13	5/8/2003	FD. 3/4" IRON ROD 0.3 FT. ABOVE SURFACE GOOD CONDITION WOOD WITNESS POST NEARBY MARKED "CRRW"	CO. RD. 284
1036	604264.636	4162585.629		"CR"	12+25.03	-35.13	5/8/2003	FD. 3/4" IRON REBAR 0.3 FT. ABOVE SURFACE GOOD CONDITION WOOD WITNESS POST NEARBY	CO. RD. 284
1037	604193.545	4162562.989		"CR"	11+99.23	34.91	5/8/2003	FD. 5/8" IRON ROD WITH 1 1/4" PLASTIC CAP STAMPED "BENTZ SURVEY INC." 0.1 FT. ABOVE SURFACE GOOD CONDITION	M 90-64
1043	605214.607	4162615.610		"OS"	2246+11.53	50.00	5/12/2003	FD. 5/8" IRON ROD 0.2 FT. BELOW A.C. GOOD CONDITION	M 119-8
1044	604726.649	4162156.022					5/12/2003	FD. 5/8" IRON ROD FLUSH WITH SURFACE GOOD CONDITION	M 119-8
1070	603893.798	4162251.003					5/8/2003	FD. 5/8" IRON REBAR 1.2 FT. ABOVE SURFACE GOOD CONDITION	UNKNOWN
1242	605395.784	4162160.077					3/2/2006	FD. 3/4" I.D. IRON PIPE 0.4 FT. ABOVE SURFACE BENT SOUTH TIED WHERE ENTERS GROUND	UNKNOWN
1256	605503.952	4162776.323		"OS"	2242+90.40	-30.14	3/2/2006	FD. 5/8" IRON REBAR WITH 1 1/4" PLASTIC CAP STAMPED "BTS ENG-SURV" 0.4 FT. ABOVE SURFACE GOOD CONDITION	2003-0063
6000	604378.254	4162189.387						CALCULATED POINT I-5 RIGHT OF WAY CENTER LINE STATION 2272+70, 325 FT. RT.	ST. HWY. 15-016
6001	604312.528	4162333.130						CALCULATED POINT I-5 RIGHT OF WAY CENTER LINE STATION 2272+70 INTERSECTION WITH RIGHT OF WAY OF HIGHWAY OR99	ST. HWY. 15-016
6002	604304.210	4162351.320						CALCULATED POINT I-5 RIGHT OF WAY CENTER LINE STATION 2272+70 INTERSECTION WITH RIGHT OF WAY OF HIGHWAY OR99	ST. HWY. 15-016



SI FEET

OREGON DEPARTMENT OF TRANSPORTATION
 CONTROL, RECOVERY, AND RETRACEMENT MAP
 I5: DEL RIO ROAD / WINCHESTER INTERCHANGE
 PACIFIC HIGHWAY NO. 1, I-5, M.P. 128.26 - 130.53
 & OAKLAND - SHADY HIGHWAY, OR99
 DOUGLAS COUNTY
 FILE:15186RW.DGN MODEL: CRR

FOR ODOT REGION 3
 3500 NW. STEWART PKWY.
 ROSEBURG, OR. 97470

NOV. 15, 2011
 SCALE: 1" = 100'
 SHEET 10 OF 11