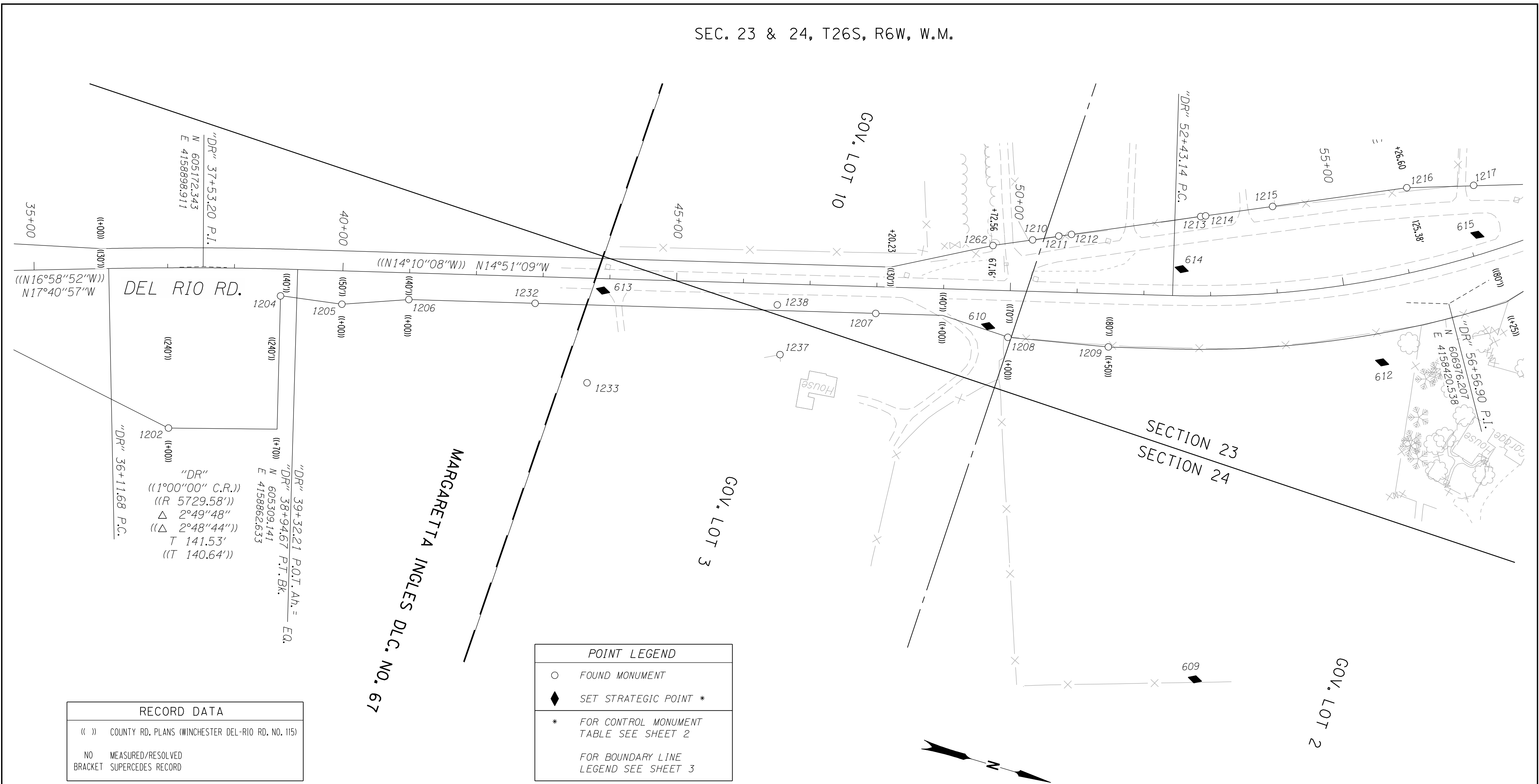


SEC. 23 & 24, T26S, R6W, W.M.

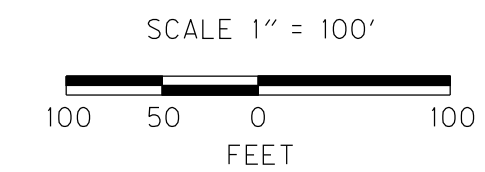


RECORD DATA	
()	COUNTY RD. PLANS (WINCHESTER DEL-RIO RD. NO. 115)
NO	MEASURED/RESOLVED
BRACKET	SUPERCEDES RECORD

POINT LEGEND	
○	FOUND MONUMENT
◆	SET STRATEGIC POINT *
*	FOR CONTROL MONUMENT TABLE SEE SHEET 2
	FOR BOUNDARY LINE LEGEND SEE SHEET 3

RECOVERED MONUMENTS

PT. NO.	LDP. NORTHING	LDP. EASTING	LINE	STATION	OFFSET (- IS LT.)	DATE	DESCRIPTION	REFERENCE
1202	605191.382	4159145.430	"DR"	37+00.17	240.00	3/1/2006	FD. 5/8" IRON REBAR 1.0 FT. BELOW SURFACE GOOD CONDITION COUNTY R/W STATION 37+00 240.00 FT. RT.	CO. RD. 115
1204	605295.794	4158907.870	"DR"	38+70.00	40.25	3/1/2006	FD. 5/8" IRON REBAR FLUSH WITH SURFACE GOOD CONDITION COUNTY R/W STATION 38+70 40.00 FT. RT.	CO. RD. 115
1205	605387.478	4158893.587	"DR"	40+00.00	50.00	3/1/2006	FD. 5/8" IRON REBAR 0.4 FT. ABOVE SURFACE GOOD CONDITION UNREADABLE 4" X 4" WOOD WITNESS POST NEARBY COUNTY R/W STATION 40+00 50.00 FT. RT.	CO. RD. 115
1206	605481.548	4158858.337	"DR"	40+99.96	40.04	3/1/2006	FD. 5/8" IRON REBAR 0.1 FT. BELOW SURFACE GOOD CONDITION COUNTY R/W STATION 41+00 40.00 FT. RT.	CO. RD. 115
1207	606157.769	4158678.965	"DR"	47+99.56	40.00	3/13/2006	FD. 5/8" IRON REBAR 0.3 FT. ABOVE SURFACE GOOD CONDITION COUNTY R/W STATION 48+00 40.00 FT. RT.	CO. RD. 115
1208	606357.563	4158656.891	"DR"	49+98.34	69.88	3/1/2006	FD. 5/8" IRON REBAR 0.2 FT. ABOVE SURFACE LEANING SOUTH TIED WHERE ENTERS GROUND POOR CONDITION COUNTY R/W STATION 50+00 70.00 FT. RT.	CO. RD. 115
1209	606505.976	4158627.787	"DR"	51+49.26	79.79	3/1/2006	FD. 5/8" IRON REBAR 0.1 FT. ABOVE SURFACE BENT TO SOUTH TIED WHERE ENTERS GROUND POOR CONDITION COUNTY R/W STATION 51+50 80.00 FT. RT.	CO. RD. 115
1210	606351.505	4158506.440	"DR"	50+31.05	-77.10	3/1/2006	FD. 3/4" I.D. IRON PIPE FLUSH WITH SURFACE POOR CONDITION POSITION APPEARS GOOD	VOL.8 PG. 23
1211	606387.379	4158489.675	"DR"	50+70.02	-84.11	3/1/2006	FD. 5/8" IRON REBAR WITH 1 1/4" PLASTIC CAP STAMPED "I.E.ENG." 0.2 FT. ABOVE SURFACE GOOD CONDITION	M 116-37
1212	606405.016	4158481.904	"DR"	50+89.06	-87.10	3/1/2006	FD. 1/2" IRON REBAR FLUSH WITH SURFACE BENT WEST POOR CONDITION	VOL.8 PG. 23
1213	606582.858	4158401.137				3/1/2006	FD. 5/8" IRON REBAR WITH 1 1/4" PLASTIC CAP STAMPED "I.E.ENG." 0.3 FT. ABOVE SURFACE GOOD CONDITION	M 116-37
1214	606589.807	4158398.090				3/1/2006	FD. 1/2" IRON REBAR FLUSH WITH SURFACE GOOD CONDITION	VOL.8 PG. 23
1215	606681.740	4158355.976				3/1/2006	FD. 1/2" IRON REBAR 0.2 FT. BELOW SURFACE GOOD CONDITION	VOL.8 PG. 23
1216	606866.379	4158271.782				3/13/2006	FD. 1/2" IRON REBAR 0.3 FT. BELOW SURFACE GOOD CONDITION	CS 58/13
1217	606961.330	4158239.785				3/1/2006	FD. 5/8" IRON REBAR 0.3 FT. BELOW SURFACE GOOD CONDITION	CS 58/13
1232	605664.467	4158809.847	"DR"	42+89.20	40.06	3/1/2006	FD. 3/4" IRON REBAR FLUSH WITH SURFACE GOOD CONDITION	M 38-62
1233	605772.955	4158901.842				3/13/2006	FD. 3/4" IRON REBAR 0.2 FT. ABOVE SURFACE GOOD CONDITION	M 38-62
1237	606037.882	4158778.981				3/1/2006	FD. 5/8" IRON ROD 0.4 FT. ABOVE SURFACE BENT SW TIED WHERE ENTERS GROUND POOR CONDITION	M 28-17
1238	606012.779	4158708.692	"DR"	46+51.80	31.57	3/1/2006	FD. 5/8" IRON ROD 0.2 FT. ABOVE SURFACE GOOD CONDITION	M 28-17
1262	606297.012	4158531.338	"DR"	49+72.00	-67.00	11/6/2006	FD. 2" IRON PIPE 0.2 FT. BELOW SURFACE GOOD CONDITION AT BASE OF STUMP	M 27-26



SI FEET OREGON DEPARTMENT OF TRANSPORTATION
 CONTROL, RECOVERY, AND RETRACEMENT MAP
 15: DEL RIO ROAD / WINCHESTER INTERCHANGE
 PACIFIC HIGHWAY NO. 1, 1-5, M.P. 128.26 - 130.53
 & OAKLAND - SHADY HIGHWAY, OR99
 DOUGLAS COUNTY
 FILE:15186RW.DGN MODEL: CRR
 FOR ODOT REGION 3 NOV. 15, 2011
 3500 NW. STEWART PKWY. SCALE: 1" = 100'
 ROSEBURG, OR. 97470 SHEET 6 OF 11