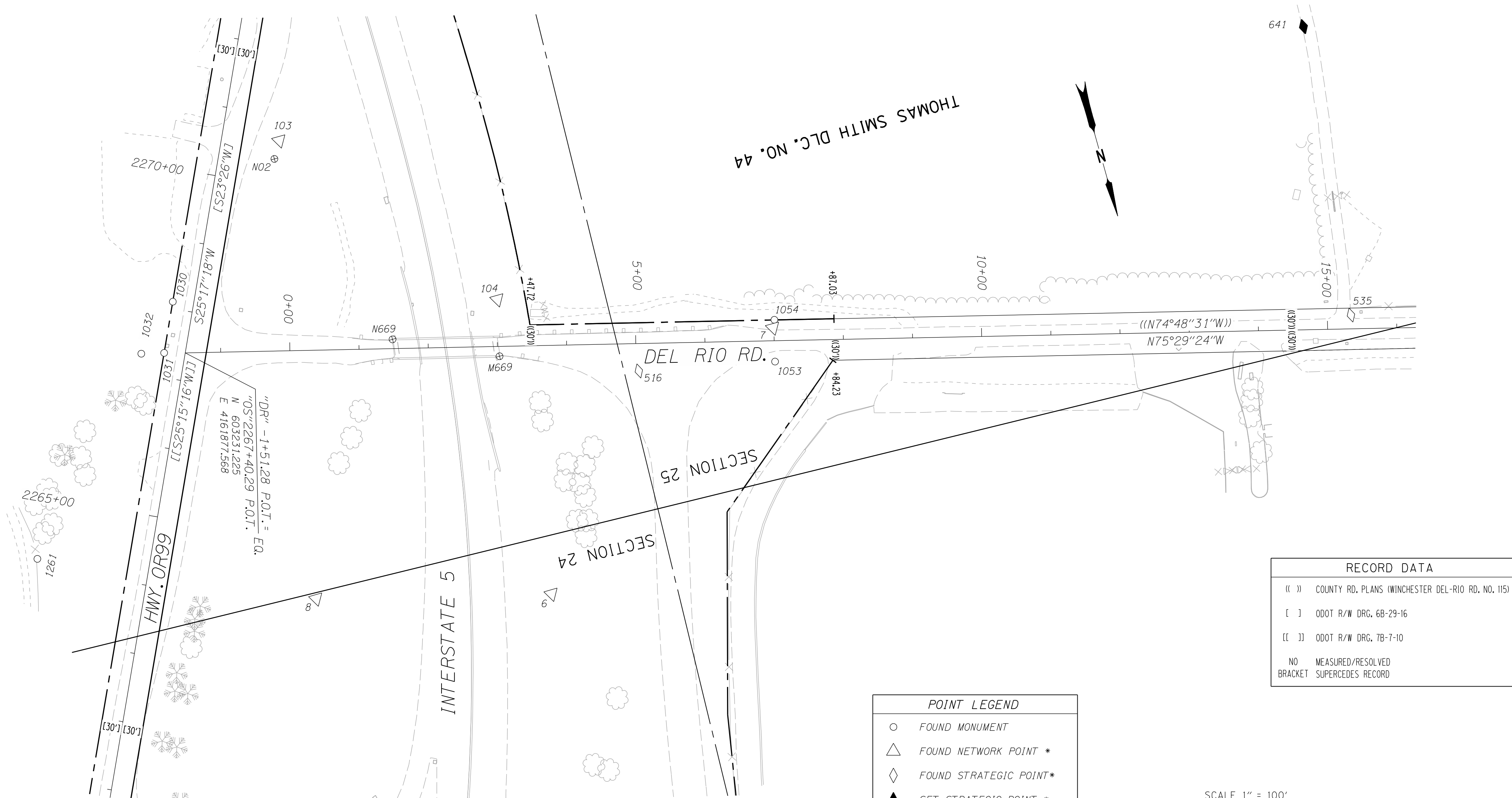
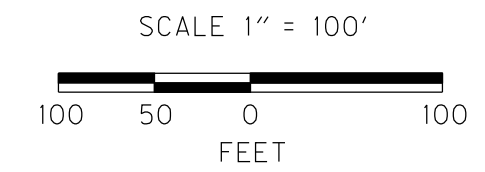


SEC. 24 & 25, T26S, R6W, W.M.




RECORD DATA	
(())	COUNTY RD. PLANS (WINCHESTER DEL-RIO RD. NO. 115)
[]	ODOT R/W DRG. 68-29-16
[]	ODOT R/W DRG. 78-7-10
NO	MEASURED/RESOLVED
BRACKET	SUPERCEDES RECORD

POINT LEGEND	
○	FOUND MONUMENT
△	FOUND NETWORK POINT *
◇	FOUND STRATEGIC POINT*
◆	SET STRATEGIC POINT *
⊕	FOUND BENCH MARK *
* FOR CONTROL MONUMENT TABLE SEE SHEET 2	
FOR BOUNDARY LINE LEGEND SEE SHEET 3	



RECOVERED MONUMENTS

PT. NO.	LDP. NORTHING	LDP. EASTING	ELEV.	LINE	STATION	OFFSET (- IS LT.)	DATE	DESCRIPTION	REFERENCE
1030	603155.209	4161874.840		"OS"	2268+10.18	-30.10	5/8/2003	FD. 5/8" IRON ROD WITH 1 1/4" PLASTIC CAP STAMPED "LANDMARK PLS 2287" FLUSH WITH SURFACE GOOD CONDITION	M 132-8
1031	603223.007	4161906.865		"OS"	2267+35.20	-30.00	5/8/2003	FD. 5/8" IRON ROD WITH 1 1/4" PLASTIC CAP STAMPED "LANDMARK PLS 2287" 0.1 FT. ABOVE SURFACE GOOD CONDITION	M 132-8
1032	603215.211	4161938.986					5/8/2003	FD. 5/8" IRON ROD WITH 1 1/4" PLASTIC CAP STAMPED "LANDMARK PLS 2287" 0.1 FT. ABOVE SURFACE GOOD CONDITION	M 132-8
1053	603473.898	4161060.339		"DR"	7+00.68	30.17	5/8/2003	FD. 5/8" IRON REBAR 0.4 FT. BELOW SURFACE GOOD CONDITION	M 132-8
1054	603415.531	4161044.996		"DR"	7+00.91	-30.17	5/8/2003	FD. 5/8" IRON REBAR 0.6 FT. BELOW SURFACE GOOD CONDITION	M 132-8
1261	603459.939	4162163.747	503.13	"OS"	2264+11.24	-161.05	11/6/2006	FD. 5/8" IRON REBAR 0.3 FT. ABOVE SURFACE GOOD CONDITION	M 132-8


OREGON DEPARTMENT OF TRANSPORTATION
 CONTROL, RECOVERY, AND RETRACEMENT MAP
 15: DEL RIO ROAD / WINCHESTER INTERCHANGE
 PACIFIC HIGHWAY NO. 1, 1-5, M.P. 128.26 - 130.53
 & OAKLAND - SHADY HIGHWAY, OR99
 DOUGLAS COUNTY
 FILE:15186RW.DGN MODEL: CRR
 FOR ODOT REGION 3 NOV. 15, 2011
 3500 NW. STEWART PKWY. SCALE: 1" = 100'
 ROSEBURG, OR. 97470 SHEET 4 OF 11