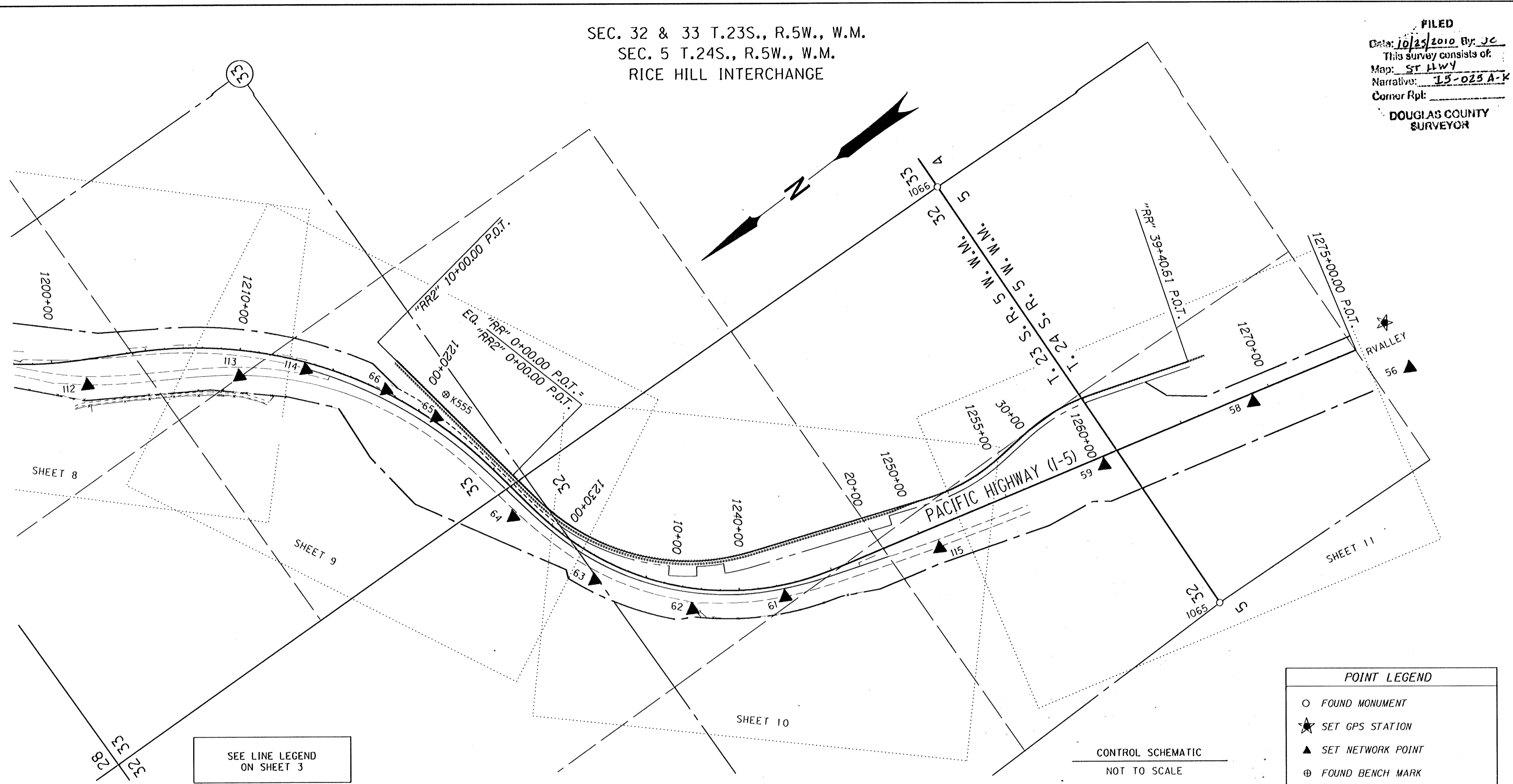


SEC. 32 & 33 T.23S., R.5W., W.M.
 SEC. 5 T.24S., R.5W., W.M.
 RICE HILL INTERCHANGE

FILED
 Date: 10/25/2010 By: JC
 This survey consists of:
 Map: ST HWY
 Narrative: 15-025 A-K
 Corner Rpt:
 DOUGLAS COUNTY
 SURVEYOR



SEE LINE LEGEND
 ON SHEET 3

| POINT LEGEND | |
|--------------|-------------------|
| ○ | FOUND MONUMENT |
| ★ | SET GPS STATION |
| ▲ | SET NETWORK POINT |
| ⊕ | FOUND BENCH MARK |

CONTROL SCHEMATIC
 NOT TO SCALE

RECOVERED MONUMENTS (NOT SHOWN ON INDIVIDUAL SHEETS) NOTE: OFFSET WITH A - (MINUS) ARE LEFT, WITHOUT ARE RIGHT

| PT. NO. | LDP NORTHING | LDP EASTING | STATION | OFFSET | DATE | DESCRIPTION | REFERENCE |
|---------|--------------|-------------|---------|--------|---------|---|-------------|
| 1065 | 687858.842 | 4174716.918 | | | 9/17/09 | FD. 1" I. ROD WITH FORK OR YOKE 12" ABOVE SURFACE FAIR COND. 1/4 CORNER COMMON TO SECTIONS 5 & 32 | CS 55/211-1 |
| 1066 | 687722.002 | 4177362.638 | | | 9/10/09 | FD. 2 1/2" BRASS DISC. ON 1" O.D. I. PIPE STAMPED "COUNTY SURVEYOR'S OFFICE T23S R5W S32 S33 S5 S4 T24S R5W 1969" 0.6' ABOVE SURFACE GOOD COND. | CS 49/42 |

*NOTES: BENCHMARKS N739 ELEV. 530.40', K555 ELEV. 719.28', AND P739 ELEV. 610.82' WERE USED TO ESTABLISH NAVD 1988 DATUM VERTICAL CONTROL ON THIS PROJECT
 OFFSET WITH A - (MINUS) ARE LEFT, WITHOUT ARE RIGHT

| PT. NO. | LDP NORTHING | LDP EASTING | ELEV. | STATION | OFFSET | DATE | DESCRIPTION | REFERENCE |
|---------|--------------|-------------|--------|------------|--------|---------|---|-----------------|
| 58 | 688313.449 | 4175098.610 | 613.66 | | | 9/14/09 | FD. 1 1/2" ALUM. CAP STAMPED "ODOT HORIZ CONTROL 58" GOOD COND. | ST. HWY. 15-001 |
| 58 | 687080.878 | 4175451.048 | 614.47 | 1288+93.45 | 45.84 | 9/14/09 | FD. 1 1/2" ALUM. CAP STAMPED "ODOT HORIZ CONTROL 58" GOOD COND. | ST. HWY. 15-001 |
| 59 | 687907.884 | 4175681.914 | 624.06 | 1260+39.82 | 47.41 | 9/14/09 | FD. 1 1/2" ALUM. CAP STAMPED "ODOT HORIZ CONTROL 59" GOOD COND. | ST. HWY. 15-001 |
| 61 | 689687.688 | 4176126.100 | 688.75 | 1242+30.74 | 68.08 | 9/14/09 | FD. 1 1/2" ALUM. CAP STAMPED "ODOT HORIZ CONTROL 61" GOOD COND. | ST. HWY. 15-001 |
| 62 | 690098.125 | 4176369.293 | 712.82 | 1237+65.29 | 112.38 | 9/14/09 | FD. 1 1/2" ALUM. CAP STAMPED "ODOT HORIZ CONTROL 62" GOOD COND. | ST. HWY. 15-001 |
| 63 | 690418.170 | 4176805.202 | 748.61 | 1232+62.75 | 114.70 | 9/14/09 | FD. 1 1/2" ALUM. CAP STAMPED "ODOT HORIZ CONTROL 63" GOOD COND. | ST. HWY. 15-001 |
| 64 | 690557.060 | 4177329.870 | 734.05 | 1227+50.27 | 104.18 | 9/14/09 | FD. 1 1/2" ALUM. CAP STAMPED "ODOT HORIZ CONTROL 64" GOOD COND. | ST. HWY. 15-001 |
| 65 | 690583.684 | 4177992.289 | 712.14 | 1220+98.59 | -24.25 | 9/14/09 | FD. 1 1/2" ALUM. CAP STAMPED "ODOT HORIZ CONTROL 65" GOOD COND. | ST. HWY. 15-001 |
| 66 | 690689.016 | 4178265.289 | 698.87 | 1217+98.67 | -13.37 | 9/14/09 | FD. 1 1/2" ALUM. CAP STAMPED "ODOT HORIZ CONTROL 66" GOOD COND. | ST. HWY. 15-001 |
| 113 | 691260.912 | 4178789.992 | 645.25 | 1210+11.25 | 137.64 | 9/8/09 | SET 5/8" X 30" IRON REBAR WITH 1 1/2" BRASS CAP STAMPED "ODOT CONTROL 113" | |
| 114 | 690982.181 | 4178606.301 | 668.74 | 1213+81.68 | 38.17 | 9/8/09 | SET 5/8" X 30" IRON REBAR WITH 1 1/2" BRASS CAP STAMPED "ODOT CONTROL 114" | |
| 115 | 688864.015 | 4175838.137 | 647.17 | 1250+69.89 | 114.62 | 9/8/09 | SET 5/8" X 30" IRON REBAR WITH 1 1/2" BRASS CAP STAMPED "ODOT CONTROL 115" | |
| RVALLEY | 688276.712 | 4175368.337 | 609.77 | | | 8/28/09 | SET 3" BRASS DISK IN 12" X 12" X 4" DEEP CONC. PEDESTAL STAMPED "OREGON D.O.T. DO NOT DISTURB R. VALLEY 2009 GEODETIC CONTROL PT." FLUSH WITH SURFACE | |

REGISTERED PROFESSIONAL LAND SURVEYOR
 Marshall R. Wagstaff
 OREGON JANUARY 9, 2001
 MARSHALL R. WAGSTAFF
 49476LS
 EXPIRES 6/30/2012

REGISTERED PROFESSIONAL LAND SURVEYOR
 Andrew D. Ausland
 OREGON JULY 15, 2003
 ANDREW D. AUSLAND
 56136LS
 EXPIRES 12/31/2011

SI FEET
OREGON DEPARTMENT OF TRANSPORTATION
 HORIZONTAL CONTROL, RECOVERY, AND RETRACEMENT MAP
 I-5: SUTHERLIN - ELKHEAD RD. PAVING & CLIMBING LANES
 PACIFIC HIGHWAY NO. 1, M.P. 146.44 - 149.23
 DOUGLAS COUNTY
 FILE: 16971RW.DGN MODEL: CRR

FOR ODOT REGION 3
 3500 NW. STEWART PKWY.
 ROSEBURG, OR. 97470

OCTOBER 20, 2010
 SHEET 2 OF 11

ST. HWY. 15 -025 B