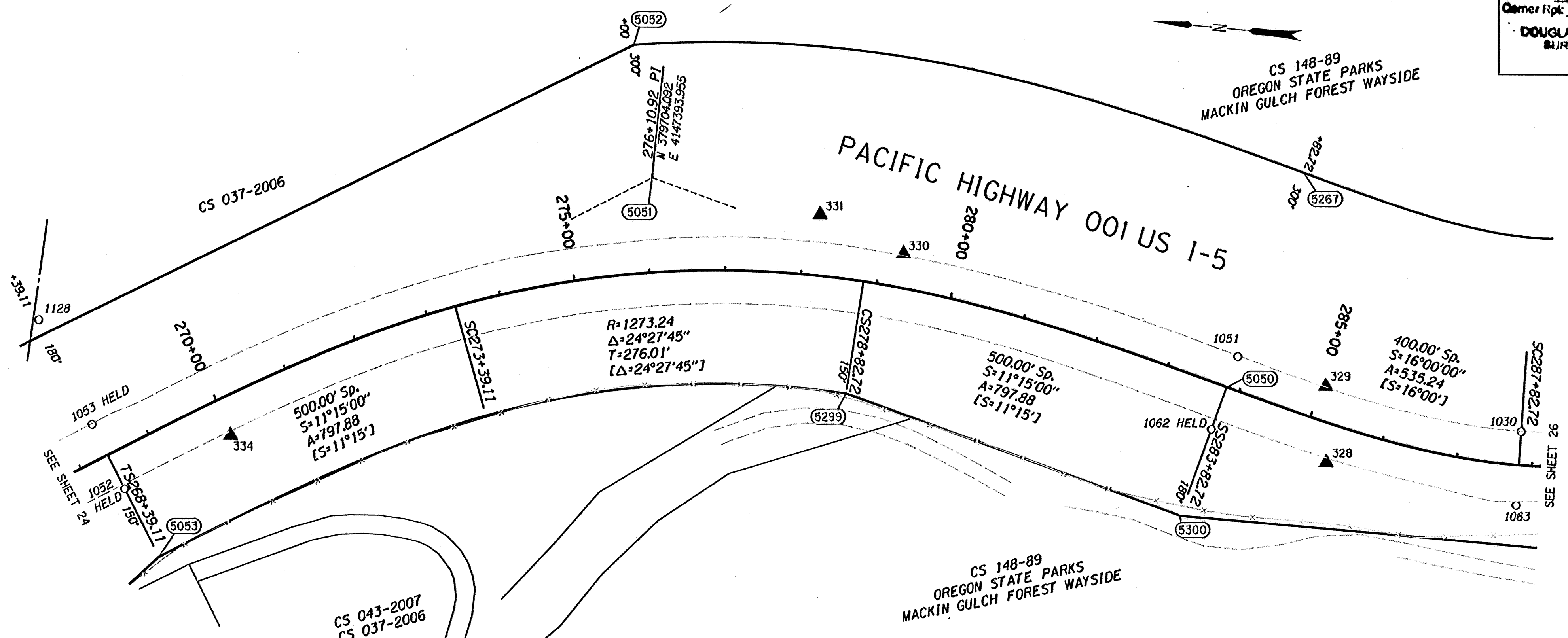


SW 1/4 SEC. 26, T. 33 S, R. 6 W., W.M.

COUNTY SURVEYORS FILE DATA
DO NOT REMOVE FROM OFFICE

FILED
Date: 10/19/2010 By: JC
This survey consists of:
Map: ST HWY
Narrative: IS-024
Corner Rpt: A-G6
DOUGLAS COUNTY
SURVEYOR



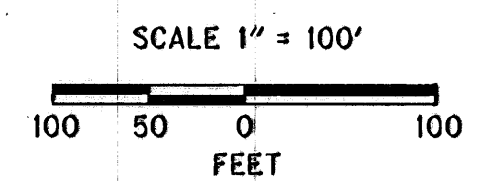
LEGEND

- PROTRACTED LOT LINE
- EDGE OF PAVEMENT
- RIGHT-OF-WAY
- PROPERTY LINE
- (1234) COMPUTED R/W POINT
- ★ SET GPS POINT
- ▲ SET NETWORK POINT
- FOUND MONUMENT
- [] RECORD DATA [88-29-21]

W=WITH, IP=IRON PIPE, IR=IRON ROD, YPC=YELLOW PLASTIC CAP, DRG=ODOT DRAWING B=BOOK P=PAGE
CSNI= COUNTY SURVEY NOT IDENTIFIED

RECOVERED MONUMENTS AND COMPUTED POINTS LIST

PT. NO.	LDP NORTHING	LDP EASTING	STATION	OFFSET	DATE	DESCRIPTION & REFERENCE DOCUMENTS
1030	378531.20	4147172.27	287+82.60	43.93 LT	01/14/2010	FOUND 2" ALUMINUM CAP, CS 077-97
1051	378912.80	4147233.55	283+82.62	42.95 LT	01/25/2010	FOUND 2" ALUMINUM CAP, "STA 283+82.64, 59.00' RT", CS 077-97
1052	380357.67	4146919.03	268+39.11	50.03 RT	01/25/2010	FOUND 2" ALUMINUM CAP, "STA 268+39.03, 50.00' RT", CS 077-97
1053	380408.62	4146999.17	268+39.12	44.94 LT	01/25/2010	FOUND 2" ALUMINUM CAP, "STA 268+39.03, 45.00' LT", CS 077-97 HELD
1062	378938.36	4147134.79	283+82.61	59.06 RT	01/26/2010	FOUND 2" ALUMINUM CAP, "STA 283+82.64, 59.00' RT", CS 077-97 HELD
1063	378528.69	4147075.31	287+82.60	53.06 RT	01/26/2010	FOUND 2" ALUMINUM CAP, "STA 287+82.64, 53.00' RT", CS 077-97
1128	380491.80	4147129.88	268+39.07	199.87 LT	02/11/2010	FOUND 5/8" X 30" IR W/YPC, "BTS ENG SURV", UP 0.2', CS 037-2006, CS 043-2007
5050	378923.45	4147191.94	283+82.72	0.00		CALCULATED MONUMENT
5051	379704.09	4147393.95	276+10.92	123.86 LT		CALCULATED MONUMENT
5052	379744.88	4147565.77	276+00.00	300.00 LT		CALCULATED MONUMENT
5053	380304.02	4146834.67	268+39.11	150.00 RT		CALCULATED MONUMENT
5267	378848.29	4147482.38	283+82.72	300.00 LT		CALCULATED MONUMENT
5299	379422.35	4147135.37	278+82.72	150.00 RT		CALCULATED MONUMENT
5300	378968.55	4147017.68	283+82.72	180.00 RT		CALCULATED MONUMENT



REGISTERED PROFESSIONAL LAND SURVEYOR
David Evans
DAVID EVANS AND ASSOCIATES INC.
530 CENTER STREET NE, SUITE 605
SALEM OREGON 97301
PHONE: 503.361.8635

OREGON
JULY 11, 2006
JON KENNETH BROADWATER
61360LS
EXPIRES: 12/31/2011

OREGON DEPARTMENT OF TRANSPORTATION
HORIZONTAL CONTROL, RECOVERY, AND RETRACEMENT SURVEY
I-5; JUMPOFF JOE-GLENDALE PAVING AND CLIMBING LANES
GLENDALE TO SUNNY VALLEY
JOSEPHINE AND DOUGLAS COUNTIES

ODOT REGION 3 WHITE CITY
100 ANTELOPE ROAD
WHITE CITY, OREGON 97503

SEPTEMBER 28, 2010
SCALE: 1" = 100'
SHEET 25 OF 33

THIS IS TO CERTIFY THAT THIS MAP WAS PREPARED USING HP DESIGNJET I055CM, BLACK C4820g INK ON HP MATTE FILM #51642B.

Josephine Co.

ST. HWY. I5 -024 Y