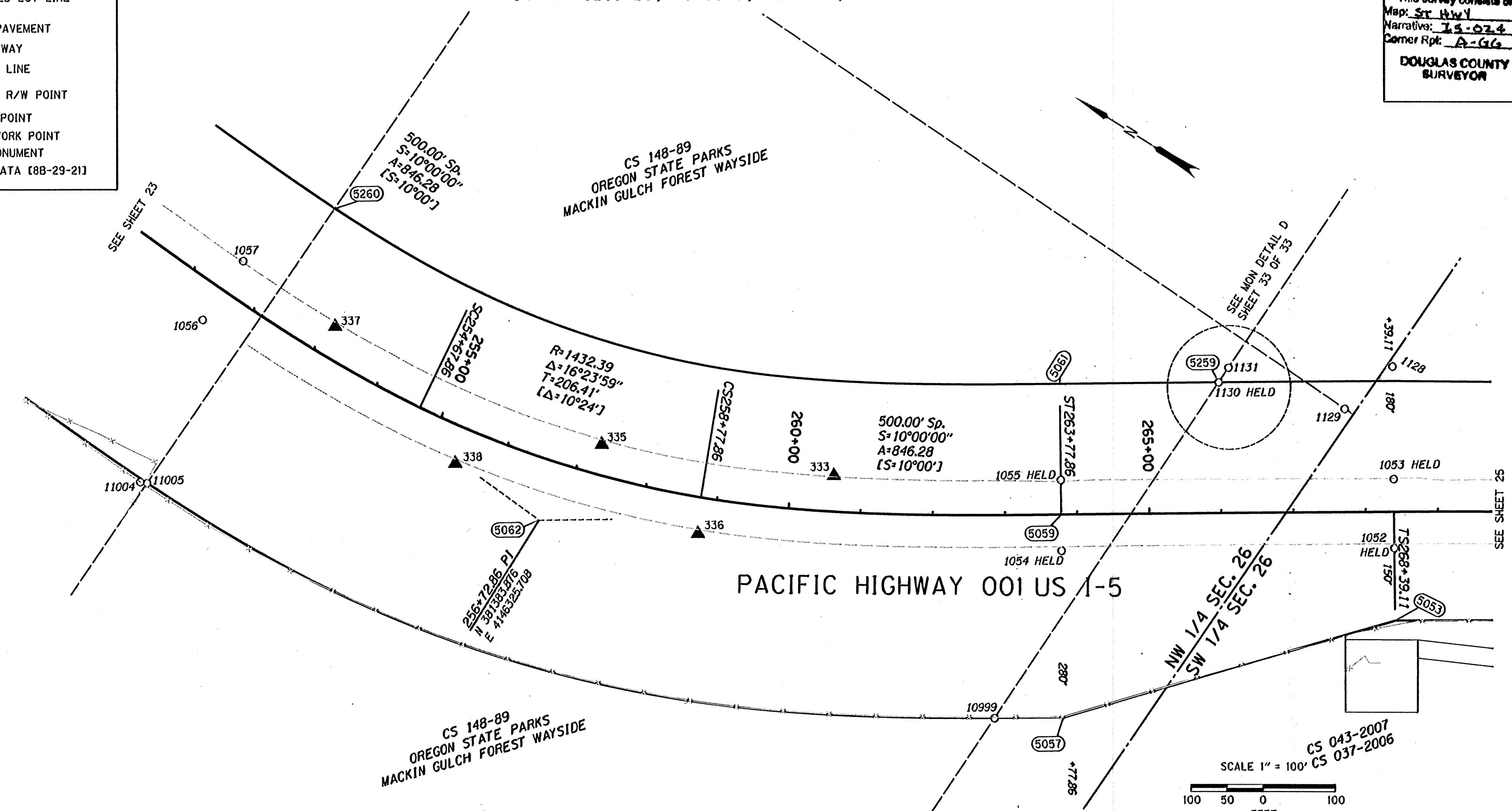


FILED  
Date: 10/19/2010 By: JC  
This survey consists of:  
Map: St. Hwy  
Narrative: 15-024  
Corner Rpt: A-GG  
DOUGLAS COUNTY SURVEYOR

NW 1/4 SEC. 26, T. 33 S., R. 6 W., W.M.  
SW 1/4 SEC. 26, T. 33 S., R. 6 W., W.M.

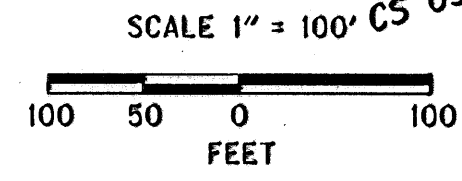
**LEGEND**

- PROTRACTED LOT LINE
- EDGE OF PAVEMENT
- RIGHT-OF-WAY
- PROPERTY LINE
- (1234) COMPUTED R/W POINT
- ★ SET GPS POINT
- ▲ SET NETWORK POINT
- FOUND MONUMENT
- [ ] RECORD DATA [88-29-21]



W=WITH, IP=IRON PIPE, IR=IRON ROD, YPC=YELLOW PLASTIC CAP, DRG=ODOT DRAWING B=BOOK P=PAGE  
CSNI= COUNTY SURVEY NOT IDENTIFIED

PT. NO.	LDP NORTHING	LDP EASTING	STATION	OFFSET	DATE	DESCRIPTION & REFERENCE DOCUMENTS
1052	380357.67	4146919.03	268+39.11	50.03 RT	01/25/2010	FOUND 2" ALUMINUM CAP, "STA 268+39.03, 50.00' RT", CS 077-97
1053	380408.62	4146999.17	268+39.12	44.94 LT	01/25/2010	FOUND 2" ALUMINUM CAP, "STA 268+39.03, 45.00' LT", CS 077-97 HELD
1054	380746.89	4146671.54	263+77.86	50.00 RT	01/25/2010	FOUND 2" ALUMINUM CAP, "STA 263+77.78, 50.00' RT", CS 077-97
1055	380799.22	4146753.79	263+77.85	47.49 LT	01/25/2010	FOUND 2" ALUMINUM CAP, "STA 263+77.78, 47.50' LT", CS 077-97
1056	381925.41	4146314.48	251+50.32	49.89 RT	01/26/2010	FOUND 2" ALUMINUM CAP, "STA 251+50.12, 50.00' RT", CS 077-97
1057	381920.90	4146413.32	251+50.31	49.05 LT	01/26/2010	FOUND 2" ALUMINUM CAP, "STA 251+50.12, 49.00' LT", CS 077-97
1128	380491.80	4147129.88	268+39.07	199.87 LT	02/11/2010	FOUND 5/8" X 30" IR W/YPC, "BTS ENG SURV", UP 0.2', CS 037-2006, CS 043-2007
1129	380516.97	4147045.15	267+72.36	141.88 LT	02/12/2010	FOUND 2" AC, "OREGON STATE PARKS DIVISION, W/16 S26, 1989", UP 0.3, CS148-89, CS037-2006, CS043-2007
1130	380684.24	4146983.68	265+98.23	179.77 LT	02/11/2010	FOUND 5/8" IR W/YPC, "OREGON STATE PARKS", CS 148-89, CS 043-2007, CS 037-2006
1131	380683.37	4147008.09	266+12.07	199.90 LT	02/11/2010	FOUND 5/8" IR W/YPC, "BTS ENG SURV", CS 037-2006, CS 043-2007
5057	380623.47	4146477.46	263+77.86	280.00 RT		CALCULATED MONUMENT
5059	380773.73	4146713.73	263+77.86	0.00		CALCULATED MONUMENT
5061	380870.32	4146865.62	263+77.86	180.00 LT		CALCULATED MONUMENT
5062	381383.88	4146325.71	256+72.86	83.08 RT		CALCULATED MONUMENT
5259	380684.43	4146983.83	265+98.28	179.73 LT		CALCULATED MONUMENT
5260	381851.04	4146541.83	252+17.92	180.00 LT		CALCULATED MONUMENT
10999	380703.92	4146426.20	262+84.19	280.28 RT		
11004	381880.46	4146078.46	252+01.74	284.02 RT	12/08/2009	FOUND 5/8" IR W/ 1 1/2" ALUMINUM CAP UN-READABLE, DOWN 2.0', ORIGIN UNKNOWN
11005	381871.79	4146082.14	252+09.57	280.09 RT	12/15/2009	FOUND 5/8" X 30" IR W/ YPC "OREGON STATE PARKS", UP 0.3', CS 148-089

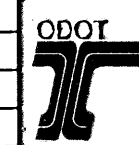


**DAVID EVANS AND ASSOCIATES INC.**  
530 CENTER STREET NE, SUITE 605  
SALEM OREGON 97301  
PHONE: 503.361.8635

REGISTERED PROFESSIONAL LAND SURVEYOR

*John G. Brinkley*

OREGON  
JULY 11, 2006  
JON KENNETH BROADWATER  
61360LS  
EXPIRES: 12/31/2011



FILE NAME: 16763RET.DGN

**OREGON DEPARTMENT OF TRANSPORTATION**  
HORIZONTAL CONTROL, RECOVERY, AND RETRACEMENT SURVEY  
I-5; JUMPOFF JOE-GLENDALE PAVING AND CLIMBING LANES  
GLENDALE TO SUNNY VALLEY  
JOSEPHINE AND DOUGLAS COUNTIES

ODOT REGION 3 WHITE CITY  
100 ANTELOPE ROAD  
WHITE CITY, OREGON 97503

SEPTEMBER 28, 2010  
SCALE: 1" = 100'  
SHEET 24 OF 33

THIS IS TO CERTIFY THAT THIS MAP WAS PREPARED USING HP DESIGNJET 1055CM, BLACK C4820a INK ON HP MATTE FILM #51642B.

Josephine Co.

**ST. HWY. I5 -024 X**