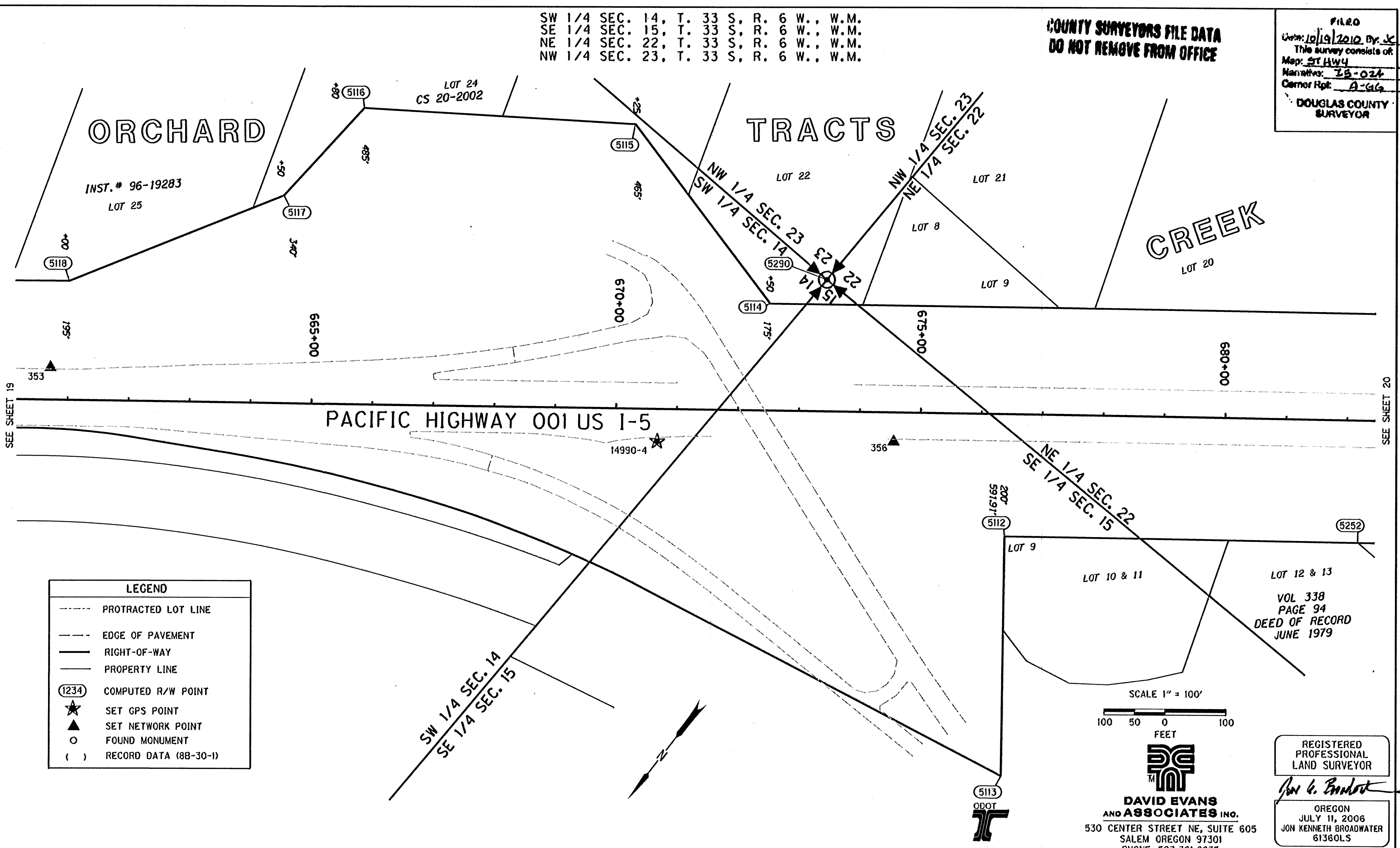


SW 1/4 SEC. 14, T. 33 S., R. 6 W., W.M.  
 SE 1/4 SEC. 15, T. 33 S., R. 6 W., W.M.  
 NE 1/4 SEC. 22, T. 33 S., R. 6 W., W.M.  
 NW 1/4 SEC. 23, T. 33 S., R. 6 W., W.M.

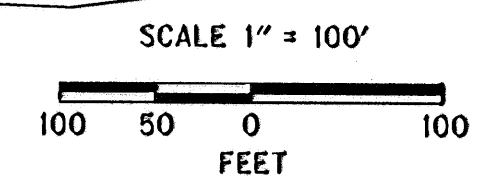
COUNTY SURVEYORS FILE DATA  
 DO NOT REMOVE FROM OFFICE

FILED  
 Date: 10/19/2010 By: JC  
 This survey consists of:  
 Map: ST HWY  
 Narrative: 15-024  
 Corner Rep: A-GG  
 DOUGLAS COUNTY  
 SURVEYOR



**LEGEND**

- PROTRACTED LOT LINE
- EDGE OF PAVEMENT
- RIGHT-OF-WAY
- PROPERTY LINE
- (1234) COMPUTED R/W POINT
- ★ SET GPS POINT
- ▲ SET NETWORK POINT
- FOUND MONUMENT
- ( ) RECORD DATA (88-30-1)



**DAVID EVANS AND ASSOCIATES INC.**  
 530 CENTER STREET NE, SUITE 605  
 SALEM OREGON 97301  
 PHONE: 503.361.8635

REGISTERED PROFESSIONAL LAND SURVEYOR  
*David Evans*  
 OREGON  
 JULY 11, 2006  
 JON KENNETH BROADWATER  
 61360LS  
 EXPIRES: 12/31/2011

W/=WITH, IP=IRON PIPE, IR=IRON ROD, YPC=YELLOW PLASTIC CAP, DRG=ODOT DRAWING B=BOOK P=PAGE  
 CSNI= COUNTY SURVEY NOT IDENTIFIED

RECOVERED MONUMENTS AND COMPUTED POINTS LIST

PT. NO.	LDP NORTHING	LDP EASTING	STATION	OFFSET	DATE	DESCRIPTION & REFERENCE DOCUMENTS
5112	388641.92	4145490.49	676+40.00	200.00 RT		CALCULATED MONUMENT
5113	388954.34	4145253.87	676+40.00	591.91 RT		CALCULATED MONUMENT
5114	388578.44	4146027.79	672+50.00	175.00 LT		CALCULATED MONUMENT
5115	388483.10	4146382.24	670+25.00	465.00 LT		CALCULATED MONUMENT
5116	388735.82	4146749.06	665+80.00	485.00 LT		CALCULATED MONUMENT
5117	388929.90	4146765.15	664+50.00	340.00 LT		CALCULATED MONUMENT
5118	389256.80	4146956.62	661+00.00	195.00 LT		CALCULATED MONUMENT
5252	388291.83	4145028.27	682+19.84	200.00 RT		CALCULATED MONUMENT
5290	388490.26	4145978.42	673+42.59	215.49 LT		CALCULATED MONUMENT

THIS IS TO CERTIFY THAT THIS MAP WAS PREPARED USING HP DESIGNJET 1055CM, BLACK C4820a INK ON HP MATTE FILM #51642B.

**OREGON DEPARTMENT OF TRANSPORTATION**  
 HORIZONTAL CONTROL, RECOVERY, AND RETRACEMENT SURVEY  
 I-5 JUMPOFF JOE-GLENDALE PAVING AND CLIMBING LANES  
 GLENDALE TO SUNNY VALLEY  
 JOSEPHINE AND DOUGLAS COUNTIES

ODOT REGION 3 WHITE CITY  
 100 ANTELOPE ROAD  
 WHITE CITY, OREGON 97503

SEPTEMBER 28, 2010  
 SCALE: NO SCALE  
 SHEET 19 OF 33

Josephine Co.

ST. HWY. 15 -024 S