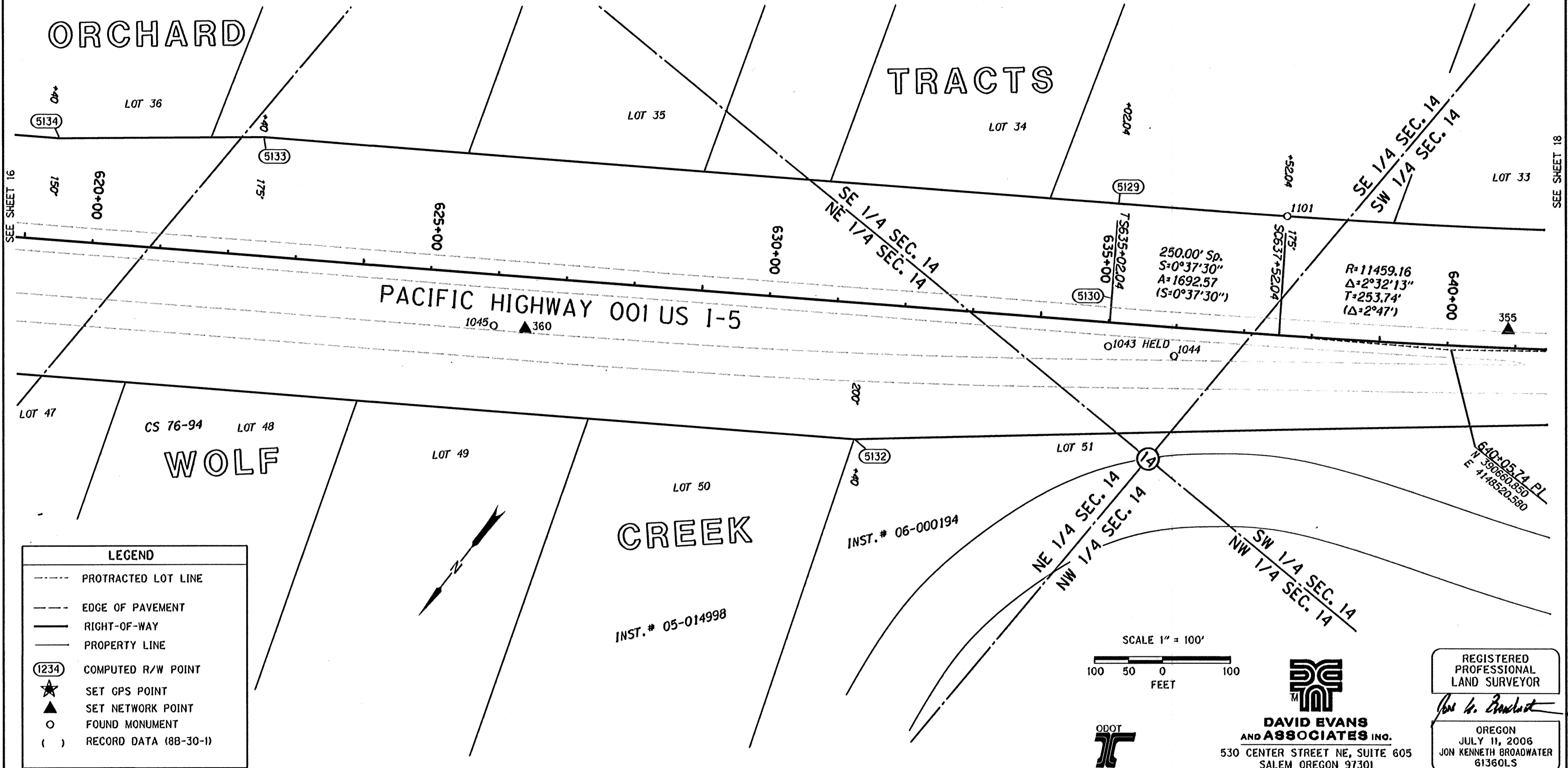


NE 1/4 SEC. 14, T. 33 S., R. 6 W., W.M.  
 SE 1/4 SEC. 14, T. 33 S., R. 6 W., W.M.  
 SW 1/4 SEC. 14, T. 33 S., R. 6 W., W.M.

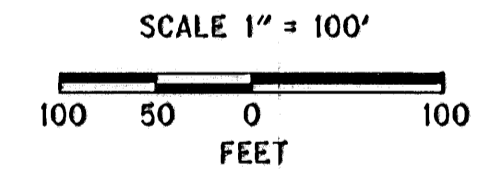
COUNTY SURVEYORS FILE DATA  
 DO NOT REMOVE FROM OFFICE

FILED  
 Date: 10-19-2010  
 This survey consists of:  
 Map: ST. HWY  
 Narrative: J-5-024  
 Corner Rpt: A-GG  
 DOUGLAS COUNTY  
 SURVEYOR



**LEGEND**

- PROTRACTED LOT LINE
- EDGE OF PAVEMENT
- RIGHT-OF-WAY
- PROPERTY LINE
- (1234) COMPUTED R/W POINT
- ★ SET GPS POINT
- ▲ SET NETWORK POINT
- FOUND MONUMENT
- ( ) RECORD DATA (8B-30-1)



**DAVID EVANS AND ASSOCIATES INC.**  
 530 CENTER STREET NE, SUITE 605  
 SALEM OREGON 97301  
 PHONE: 503.361.8635

REGISTERED PROFESSIONAL LAND SURVEYOR  
*Jon K. Broadwater*  
 OREGON  
 JULY 11, 2006  
 JON KENNETH BROADWATER  
 61360LS  
 EXPIRES: 12/31/2011

RECOVERED MONUMENTS AND COMPUTED POINTS LIST

W/=WITH, IP=IRON PIPE, IR=IRON ROD, YPC=YELLOW PLASTIC CAP, DRG=ODOT DRAWING B=BOOK P=PAGE  
 CSNI= COUNTY SURVEY NOT IDENTIFIED

PT. NO.	LDP NORTHING	LDP EASTING	STATION	OFFSET	DATE	DESCRIPTION & REFERENCE DOCUMENTS
1043	390967.08	4148922.07	635+02.15	34.99 RT	01/21/2010	FOUND 2 1/2" BRASS DISK IN CONCRETE, DOWN 0.2', "RP PS 35 RT LN 635+02.73", ODOT 8B-30-1 HELD
1044	390919.01	4148836.78	635+99.76	41.80 RT	01/21/2010	FOUND 2 1/2" BRASS DISK IN CONCRETE DOWN 0.3', "RP PT 25' LT LS 634+44.27", ODOT 8B-30-1
1045	391497.31	4149655.27	625+98.18	74.66 RT	01/21/2010	FOUND 2 1/2" BRASS DISK IN CONCRETE DOWN 0.2', "RP PS 25' LT LS 624+37.60", ODOT 8B-30-1
1101	390654.21	4148830.66	637+52.47	175.16 LT	02/02/2010	FOUND 5/8" IR W/ 1 1/2" ALUMINUM CAP, ODOT 8B-30-1
5129	390791.75	4149037.63	635+02.04	175.00 LT		CALCULATED MONUMENT
5130	390908.47	4148960.32	635+02.43	35.00 LT		CALCULATED MONUMENT
5132	391304.05	4149133.81	631+40.00	200.00 RT		CALCULATED MONUMENT
5133	391485.75	4150091.73	622+40.00	175.00 LT		CALCULATED MONUMENT
5134	390372.57	4148106.88	619+40.00	150.00 LT		CALCULATED MONUMENT

**OREGON DEPARTMENT OF TRANSPORTATION**  
 HORIZONTAL CONTROL, RECOVERY, AND RETRACEMENT SURVEY  
 I-5: JUMPOFF JOE-GLENDALE PAVING AND CLIMBING LANES  
 GLENDALE TO SUNNY VALLEY  
 JOSEPHINE AND DOUGLAS COUNTIES

ODOT REGION 3 WHITE CITY  
 100 ANTELOPE ROAD  
 WHITE CITY, OREGON 97503

SEPTEMBER 28, 2010  
 SCALE: 1" = 100'  
 SHEET 17 OF 33

THIS IS TO CERTIFY THAT THIS MAP WAS PREPARED USING HP DESIGNJET 1055CM, BLACK C4820a INK ON HP MATTE FILM #51642B.

Josephine Co.

ST. HWY. I-5 -024 Q