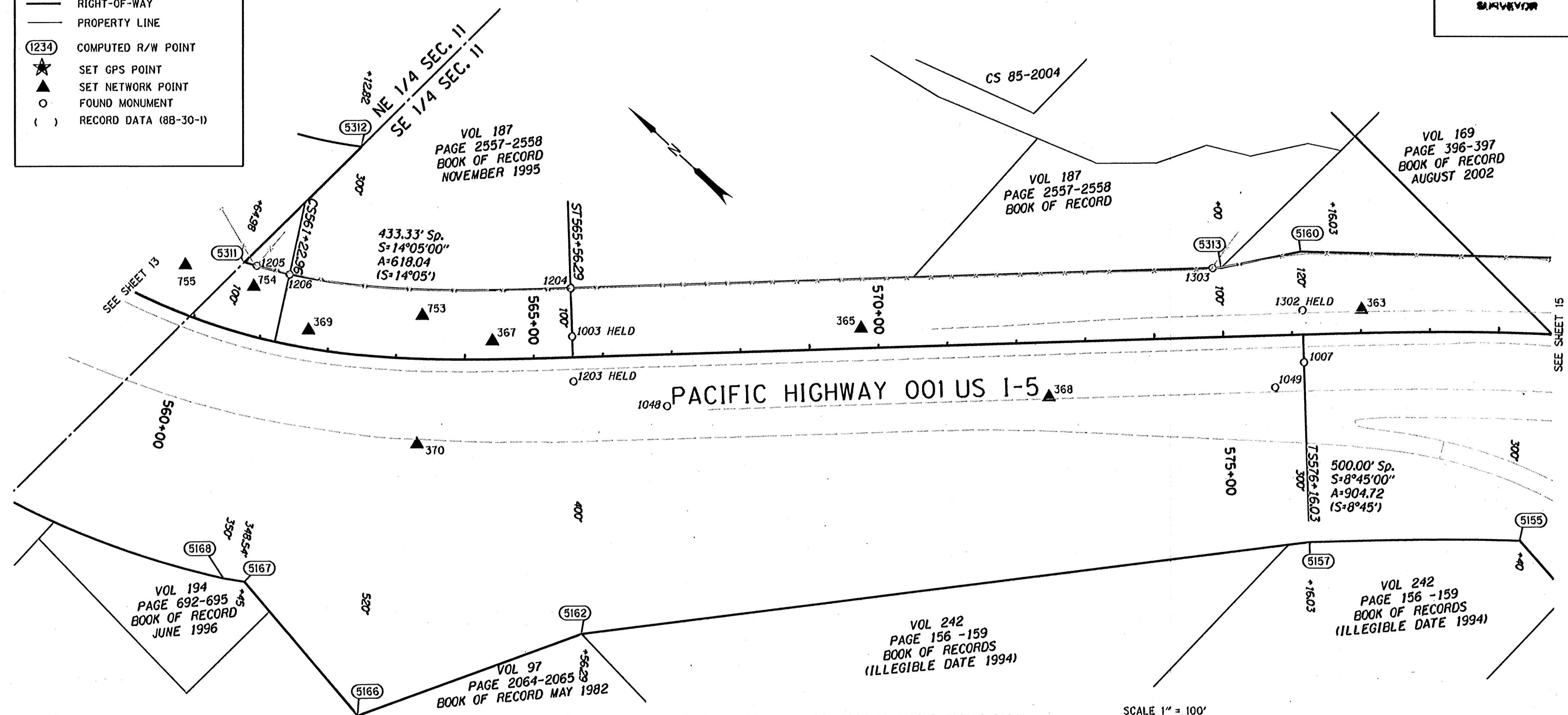


DATE: 10/19/2010 BY: JC  
This survey consists of:  
Map: ST HWY  
Narrative: IS-024  
Center Rpt: A-GG  
DOUGLAS COUNTY  
SURVEYOR

NE 1/4 SEC. 11, T. 33 S., R. 6 W., W.M.  
SE 1/4 SEC. 11, T. 33 S., R. 6 W., W.M.  
SW 1/4 SEC. 12, T. 33 S., R. 6 W., W.M.

**LEGEND**

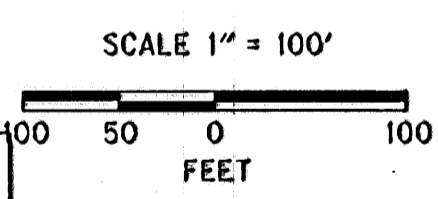
- PROTRACTED LOT LINE
- EDGE OF PAVEMENT
- RIGHT-OF-WAY
- PROPERTY LINE
- (1234) COMPUTED R/W POINT
- ★ SET GPS POINT
- ▲ SET NETWORK POINT
- FOUND MONUMENT
- ( ) RECORD DATA (88-30-1)



W/=WITH, IP=IRON PIPE, IR=IRON ROD, YPC=YELLOW PLASTIC CAP, DRG=ODOT DRAWING B=BOOK P=PAGE  
BC=BRASS CAP, BD=BRASS DISK, CSNI= COUNTY SURVEY NOT IDENTIFIED

RECOVERED MONUMENTS AND COMPUTED POINTS LIST

PT. NO.	LDP NORTHING	LDP EASTING	STATION	OFFSET	DATE	DESCRIPTION & REFERENCE DOCUMENTS
1003	395927.70	4150608.46	565+56.29	30.00 LT	11/10/2009	FOUND 2 1/2" BD IN CONC, DOWN 0.1', ODOT 88-30-1
1007	395122.31	4151300.89	576+16.20	40.21 RT	11/10/2009	FOUND 2 1/2" BD IN CONC, FLUSH, ODOT 88-30-1
1048	395758.20	4150627.81	566+90.90	74.95 RT	01/21/2010	FOUND 2 1/2" BD IN CONC, DOWN 0.8', "RP PT 25'LT LS 567+75.86", ODOT 88-30-1
1049	395128.45	4151245.89	575+73.28	75.15 RT	01/21/2010	FOUND 2 1/2" BD IN CONC, DOWN 0.2', "RP PS 25'LT LS 576+58.24", ODOT 88-30-1
1203	395882.16	4150562.06	565+56.38	35.02 RT	01/06/2010	FOUND 2 1/2" BC IN CONC, "STATE HIGHWAY DEPARTMENT REFERENCE, 565+57.50 35 RT", DN 0.5', ODOT 88-30-1
1204	395976.68	4150658.38	565+56.42	99.94 LT	01/06/2010	FOUND 1 1/2" ALUMINUM CAP "OREG STATE HWY DEPT", UP 0.2', ODOT 88-30-1
1205	396332.72	4150373.57	560+67.60	100.41 LT	01/07/2010	FOUND 5/8" IR W/NO CAP, FLUSH, ODOT 88-30-1
1206	396289.36	4150396.59	561+23.00	99.87 LT	01/07/2010	FOUND 5/8" IR W/ 1 1/2" ALUMINUM CAP "OREG STATE HWY DEPT", UP 0.1', ODOT 88-30-1
1302	395174.99	4151354.62	576+16.26	35.04 LT	12/16/2009	FOUND 2 1/2"BD, "STATE HIGHWAY DEPARTMENT REF., RP PS 576+17.24 35 LT", FLUSH, ODOT 88-30-1 HELD
1303	395312.16	4151310.71	574+87.61	99.82 LT	12/17/2009	FOUND 5/8" SMOOTH IR W/ NO CAP, UP 0.8', ODOT 88-30-1
5155	394718.64	4151324.33	579+40.00	300.00 RT		CALCULATED MONUMENT
5157	394940.42	4151115.40	576+16.03	300.00 RT		CALCULATED MONUMENT
5160	395234.68	4151415.08	576+16.03	120.00 LT		CALCULATED MONUMENT
5162	395626.51	4150301.57	565+56.29	400.00 RT		CALCULATED MONUMENT
5166	395784.65	4149994.63	562+80.00	520.00 RT		CALCULATED MONUMENT
5167	396036.36	4150025.56	561+45.00	348.55 RT		CALCULATED MONUMENT
5168	396061.78	4150008.53	561+22.96	350.00 RT		CALCULATED MONUMENT
5311	396349.30	4150364.98	560+46.53	100.00 LT		CALCULATED MONUMENT
5312	396338.38	4150603.34	562+12.82	300.00 LT		CALCULATED MONUMENT
5313	395303.45	4151319.52	575+00.00	100.00 LT		CALCULATED MONUMENT



REGISTERED PROFESSIONAL LAND SURVEYOR  
*Jon K. Broadwater*  
OREGON JULY 11, 2006  
JON KENNETH BROADWATER 61380LS  
EXPIRES: 12/31/2011

**DAVID EVANS AND ASSOCIATES INC.**  
530 CENTER STREET NE, SUITE 605, SALEM OREGON 97301  
PHONE: 503.361.8635

FILE NAME: 16763RET.DGN

**OREGON DEPARTMENT OF TRANSPORTATION**  
HORIZONTAL CONTROL, RECOVERY, AND RETRACEMENT SURVEY  
I-5: JUMPOFF JOE-GLENDALE PAVING AND CLIMBING LANES  
GLENDALE TO SUNNY VALLEY  
JOSEPHINE AND DOUGLAS COUNTIES

ODOT REGION 3 WHITE CITY  
100 ANTELOPE ROAD  
WHITE CITY, OREGON 97503

SEPTEMBER 28, 2010  
SCALE: 1" = 100'  
SHEET 14 OF 33

THIS IS TO CERTIFY THAT THIS MAP WAS PREPARED USING HP DESIGNJET I055CM, BLACK C4820g INK ON HP MATTE FILM #51642B.

Josephine CO.

ST. HWY. I5 -024 N