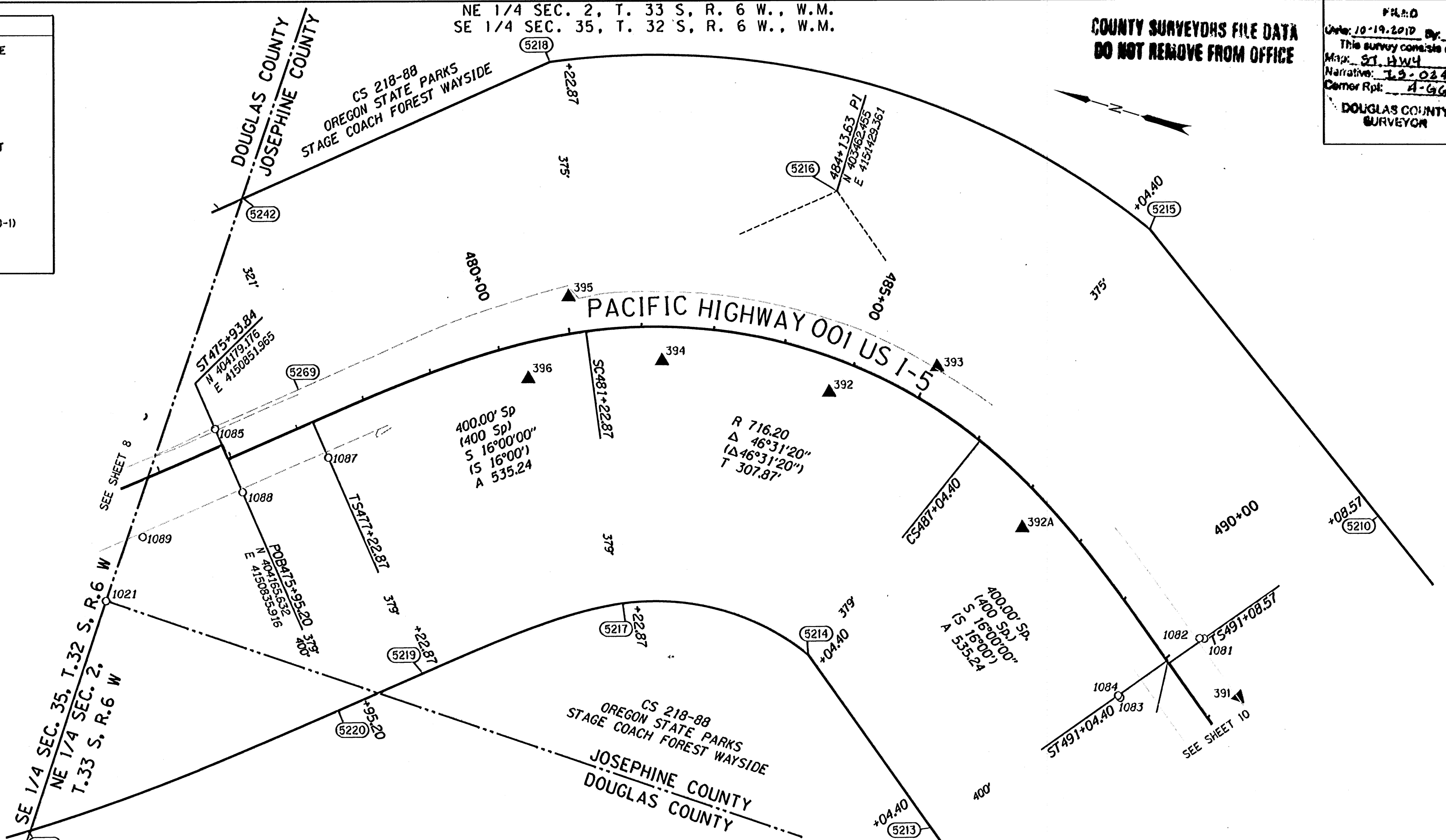


NE 1/4 SEC. 2, T. 33 S, R. 6 W., W.M.
SE 1/4 SEC. 35, T. 32 S, R. 6 W., W.M.

COUNTY SURVEYORS FILE DATA
DO NOT REMOVE FROM OFFICE

FILED
Date: 10-19-2010 By: JC
This survey consists of
Map: ST. HWY
Narrative: 15-024
Corner Rpt: A-GG
DOUGLAS COUNTY
SURVEYOR

LEGEND	
---	PROTRACTED LOT LINE
---	EDGE OF PAVEMENT
---	RIGHT-OF-WAY
---	PROPERTY LINE
(1234)	COMPUTED R/W POINT
★	SET GPS POINT
▲	SET NETWORK POINT
○	FOUND MONUMENT
()	RECORD DATA (8B-30-1)



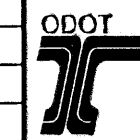
RECOVERED MONUMENTS AND COMPUTED POINTS LIST

PT. NO.	LDP NORTHING	LDP EASTING	STATION	OFFSET	DATE	DESCRIPTION & REFERENCE DOCUMENTS
1021	404271.81	4150600.19	473+65.73	135.79 RT	11/22/2009	FOUND 5/8" IR W/2" ALUMINUM CAP "OREGON STATE PARKS, E 1/16 52 1988", UP 0.6', CS 218-88
1081	402800.42	4150981.99	491+08.70	60.06 LT	01/28/2010	FOUND 2" ALUMINUM CAP, "STA 491+08.57 60.00' LT", DOWN 0.2', CS 076-97
1082	402806.80	4150980.67	491+04.52	55.06 LT	01/28/2010	FOUND 2" ALUMINUM CAP, "STA 491+04.40 55.00' LT", FLUSH, CS 076-97
1083	402888.86	4150870.24	491+08.70	82.46 RT	01/28/2010	FOUND 2" ALUMINUM CAP, "STA 491+08.57 82.50' RT", FLUSH, CS 076-97
1084	402892.45	4150872.45	491+04.52	82.95 RT	01/28/2010	FOUND 2 ALUMINUM CAP, "STA 491+04.40 83.00' RT", CS 076-97
1085	404194.50	4150870.31	475+55.32	44.50 LT	01/28/2010	FOUND 2" ALUMINUM CAP, "STA 475+95.20 45.00' LT", DOWN 0.1', CS 076-97
1087	404033.07	4150876.99	477+22.99	54.11 RT	01/28/2010	FOUND 2 ALUMINUM CAP, "STA 477+22.87 54.00' RT", CS 076-97
1088	404133.21	4150797.70	475+95.33	50.11 RT	01/28/2010	FOUND 2 ALUMINUM CAP, "STA 475+95.20 50.00' RT", CS 076-97
1089	404248.41	4150699.17	474+43.63	73.09 RT	01/28/2010	FOUND 2 ALUMINUM CAP, "STA 474+43.63 30.00' RT", CS 076-97
5210	402617.61	4151213.18	491+08.57	354.80 LT		CALCULATED MONUMENT
5213	403089.30	4150623.91	491+04.40	400.00 RT		CALCULATED MONUMENT
5214	403319.44	4150804.34	487+04.40	379.00 RT		CALCULATED MONUMENT
5215	403032.60	4151501.65	487+04.40	375.00 LT		CALCULATED MONUMENT
5216	403462.45	4151429.36	484+13.63	220.79 LT		CALCULATED MONUMENT
5217	403585.74	4150800.15	481+22.87	379.00 RT		CALCULATED MONUMENT
5218	403894.37	4151488.09	481+22.87	375.00 LT		CALCULATED MONUMENT
5219	403823.62	4150628.62	477+22.87	379.00 RT		CALCULATED MONUMENT
5220	403921.19	4150546.28	475+95.20	379.00 RT		CALCULATED MONUMENT
5242	404247.80	4151186.90	477+58.08	321.24 LT		CALCULATED MONUMENT
5243	404285.55	4150264.45	471+81.04	400.13 RT		CALCULATED MONUMENT
5269	404100.31	4150956.47	477+22.87	50.00 LT		CALCULATED MONUMENT

THIS IS TO CERTIFY THAT THIS MAP WAS PREPARED USING HP DESIGNJET 1055CM, BLACK C4820a INK ON HP MATTE FILM #51642B.

W=WITH, IP=IRON PIPE, IR=IRON ROD, YPC=YELLOW PLASTIC CAP, DRG=ODOT DRAWING B=BOOK P=PAGE
CSNI= COUNTY SURVEY NOT IDENTIFIED

SCALE 1" = 100'



FILE NAME: 16763RET.DGN



DAVID EVANS
AND ASSOCIATES INC.
530 CENTER STREET NE, SUITE 605
SALEM OREGON 97301
PHONE: 503.361.8635

REGISTERED
PROFESSIONAL
LAND SURVEYOR
Jon K. Broadwater
OREGON
JULY 11, 2006
JON KENNETH BROADWATER
61360LS
EXPIRES: 12/31/2011

OREGON DEPARTMENT OF TRANSPORTATION

HORIZONTAL CONTROL, RECOVERY, AND RETRACEMENT SURVEY
I-5: JUMPOFF JOE-GLENDALE PAVING AND CLIMBING LANES
GLENDALE TO SUNNY VALLEY
JOSEPHINE AND DOUGLAS COUNTIES

ODOT REGION 3 WHITE CITY
100 ANTELOPE ROAD
WHITE CITY, OREGON 97503

SEPTEMBER 28, 2010
SCALE: 1" = 100'
SHEET 9 OF 33

ST. HWY. I 5 -024 I