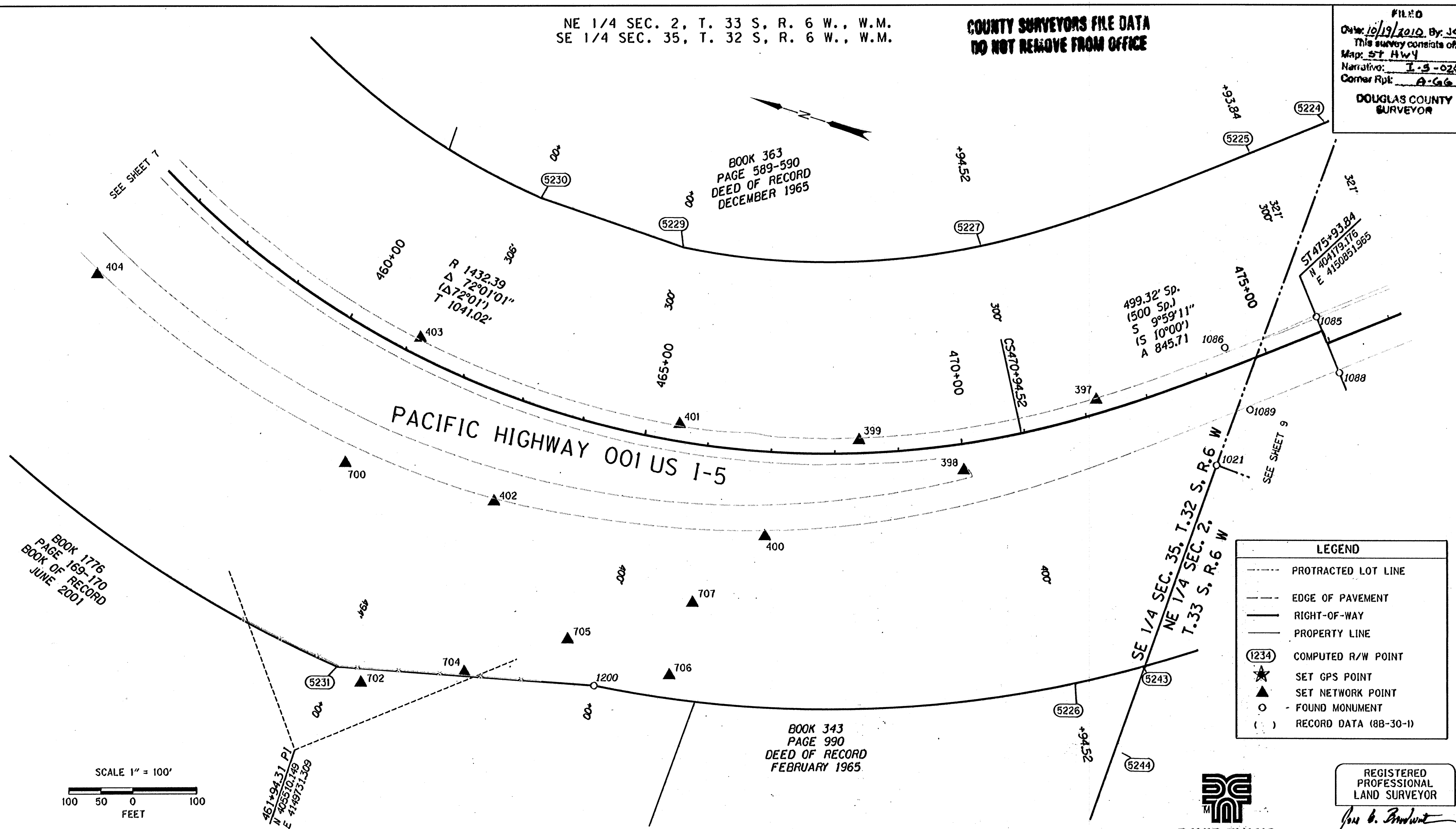


NE 1/4 SEC. 2, T. 33 S, R. 6 W., W.M.
SE 1/4 SEC. 35, T. 32 S, R. 6 W., W.M.

COUNTY SURVEYORS FILE DATA
DO NOT REMOVE FROM OFFICE

FILED
Date: 10/19/2010 By: JC
This survey consists of:
Map: ST HWY
Narrative: I-5-024
Corner Rpt: A-G-G
DOUGLAS COUNTY
SURVEYOR



W/=WITH, IP=IRON PIPE, IR=IRON ROD, YPC=YELLOW PLASTIC CAP, DRG=ODOT DRAWING B=BOOK P=PAGE
CSNI= COUNTY SURVEY NOT IDENTIFIED

RECOVERED MONUMENTS AND COMPUTED POINTS LIST

PT. NO.	LDP NORTHING	LDP EASTING	STATION	OFFSET	DATE	DESCRIPTION & REFERENCE DOCUMENTS
1021	404271.81	4150600.19	473+65.73	135.79 RT	11/22/2009	FOUND 5/8" IR W/2" ALUMINUM CAP "OREGON STATE PARKS, E 1/16 52 1988", UP 0.6', CS 218-88
1085	404194.50	4150870.31	475+55.32	44.50 LT	01/28/2010	FOUND 2" ALUMINUM CAP, "STA 475+95.20 45.00' LT", DOWN 0.1', CS 076-97
1086	404316.14	4150779.43	474+41.83	31.91 LT	01/28/2010	FOUND 2 ALUMINUM CAP, "STA 474+43.63 75.00' LT", FLUSH, CS 076-97
1088	404133.21	4150797.70	475+95.33	50.11 RT	01/28/2010	FOUND 2 ALUMINUM CAP, "STA 475+95.20 50.00' RT", CS 076-97
1200	405094.87	4149971.49	465+00.26	399.91 RT	11/19/2009	FOUND 5/8" IR W/NO CAP, UP 0.1', ODOT 8B-30-1, M151-65
5224	404275.10	4151163.57	477+22.87	321.00 LT		CALCULATED MONUMENT
5225	404372.40	4151081.45	475+93.84	300.00 LT		CALCULATED MONUMENT
5225	404372.40	4151081.45	475+95.54	321.00 LT		CALCULATED MONUMENT
5226	404377.95	4150207.46	470+94.52	400.00 RT		CALCULATED MONUMENT
5227	404729.12	4150813.00	470+94.52	300.00 LT		CALCULATED MONUMENT
5229	405172.37	4150667.10	465+00.00	300.00 LT		CALCULATED MONUMENT
5230	405408.50	4150671.71	462+00.00	306.00 LT		CALCULATED MONUMENT
5231	405487.55	4149875.62	462+00.00	494.00 RT		CALCULATED MONUMENT
5243	404285.55	4150264.45	471+81.04	400.13 RT		CALCULATED MONUMENT
5244	404273.84	4150125.86	471+30.86	523.42 RT		CALCULATED MONUMENT

THIS IS TO CERTIFY THAT THIS MAP WAS PREPARED USING HP DESIGNJET 1055CM, BLACK C4820g INK ON HP MATTE FILM #51642B.



DAVID EVANS AND ASSOCIATES INC.
530 CENTER STREET NE, SUITE 605
SALEM OREGON 97301
PHONE: 503.361.8635

REGISTERED PROFESSIONAL LAND SURVEYOR
David Evans
OREGON
JULY 11, 2006
JON KENNETH BROADWATER
61360LS
EXPIRES: 12/31/2011

OREGON DEPARTMENT OF TRANSPORTATION
HORIZONTAL CONTROL, RECOVERY, AND RETRACEMENT SURVEY
I-5: JUMPOFF JOE-GLENDALE PAVING AND CLIMBING LANES
GLENDALE TO SUNNY VALLEY
JOSEPHINE AND DOUGLAS COUNTIES

ODOT REGION 3 WHITE CITY
100 ANTELOPE ROAD
WHITE CITY, OREGON 97503
SEPTEMBER 28, 2010
SCALE: 1" = 100'
SHEET 8 OF 33

ST. HWY. I 5 -024 H