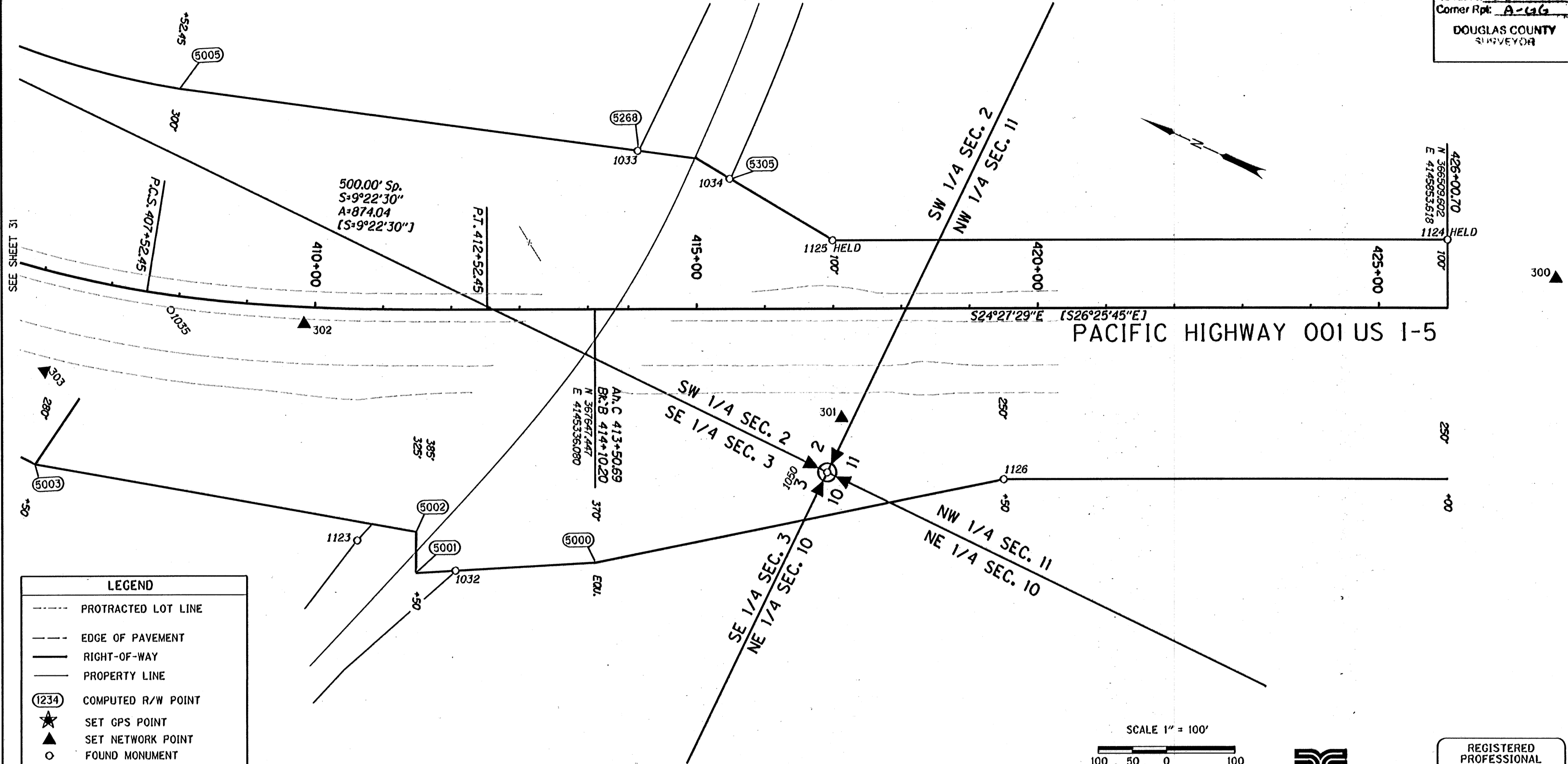


COUNTY SURVEYORS FILE DATA
DO NOT REMOVE FROM OFFICE

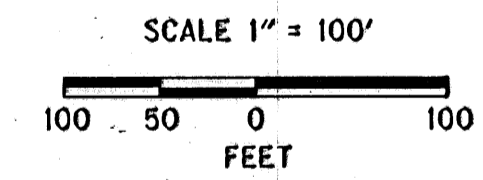
FILED
Date: 10/19/2010 By: JC
This survey consists of
Map: ST HWY
Narrative: IS-024
Corner Rpt: A-46
DOUGLAS COUNTY
SURVEYOR

SW 1/4 SEC. 2, T. 34 S., R. 6 W., W.M.
SE 1/4 SEC. 3, T. 34 S., R. 6 W., W.M.
NE 1/4 SEC. 10, T. 34 S., R. 6 W., W.M.
NW 1/4 SEC. 11, T. 34 S., R. 6 W., W.M.



LEGEND

- PROTRACTED LOT LINE
- EDGE OF PAVEMENT
- RIGHT-OF-WAY
- PROPERTY LINE
- (1234) COMPUTED R/W POINT
- ★ SET GPS POINT
- ▲ SET NETWORK POINT
- FOUND MONUMENT
- [] RECORD DATA (8B-29-21)



W/=WITH, IP=IRON PIPE, IR=IRON ROD, YPC=YELLOW PLASTIC CAP, DRG=ODOT DRAWING B=BOOK P=PAGE
BD= BRASS DISK, CSNI= COUNTY SURVEY NOT IDENTIFIED

RECOVERED MONUMENTS AND COMPUTED POINTS LIST

PT. NO.	LDP NORTHING	LDP EASTING	STATION	OFFSET	DATE	DESCRIPTION & REFERENCE DOCUMENTS
1032	367676.13	4144904.03	412+05.79	381.43 RT	01/20/2010	FOUND 1 1/2" ALUMINUM CAP, DOWN 0.1', ODOT 8B-29-21
1033	367685.59	4145573.13	414+14.11	231.57 LT	01/20/2010	FOUND 1 1/2" ALUMINUM CAP, UP 0.1', ODOT 8B-29-21, CS 2000-087
1034	367545.97	4145591.43	415+48.78	190.43 LT	01/20/2010	FOUND 5/8" IR W/NO CAP, FLUSH, ODOT 8B-29-21, CS 2000-087
1035	368213.20	4145078.75	407+90.79	21.70 RT	01/20/2010	FOUND 2 1/2" BD IN CONCRETE, DOWN 0.6', ODOT 8B-29-21
1050	367239.03	4145259.14	416+90.60	239.13 RT	01/22/2010	FOUND 2 1/2" BD, "STATE HIGHWAY DEPT REFERENCE", DOWN 0.2', ODOT 8B-29-21, CS2000-087, CS1992-023
1123	367825.84	4144885.04	410+68.59	338.16 RT	02/10/2010	FOUND 5/8" IR W/NO CAP, DOWN 0.5', ODOT 8B-29-21
1124	366550.99	4145944.65	426+00.90	100.00 LT	02/10/2010	FOUND 1 1/2" ALUMINUM CAP, "OREGON STATE HWY DEPT", UP 0.1', ODOT 8B-29-21 HELD
1125	367371.53	4145571.38	416+99.27	99.95 LT	02/10/2010	FOUND 1 1/2" ALUMINUM CAP, "OREGON STATE HWY DEPT", FLUSH, ODOT 8B-29-21 HELD
1126	366999.13	4145356.41	419+49.25	249.91 RT	02/10/2010	FOUND 1 1/2" ALUMINUM CAP, ODOT 8B-29-21
5000	367494.26	4144999.28	414+10.20	370.00 RT		CALCULATED MONUMENT
5001	367727.45	4144877.02	411+50.00	385.00 RT		CALCULATED MONUMENT
5002	367751.91	4144931.81	411+50.00	325.00 RT		CALCULATED MONUMENT
5003	368301.44	4144791.19	406+50.00	280.00 RT		CALCULATED MONUMENT
5005	368334.28	4145378.81	407+52.45	300.00 LT		CALCULATED MONUMENT
5268	378083.57	4147773.91	296+67.13	300.00 LT		CALCULATED MONUMENT
5305	367544.49	4145591.56	415+50.18	189.93 LT		CALCULATED MONUMENT



REGISTERED PROFESSIONAL LAND SURVEYOR
Jan G. Brister
DAVID EVANS AND ASSOCIATES INC.
530 CENTER STREET NE, SUITE 605
SALEM OREGON 97301
PHONE: 503.361.8635
EXPIRES: 12/31/2011

OREGON DEPARTMENT OF TRANSPORTATION
HORIZONTAL CONTROL, RECOVERY, AND RETRACEMENT SURVEY
I-5; JUMPOFF JOE-GLENDALE PAVING AND CLIMBING LANES
GLENDALE TO SUNNY VALLEY
JOSEPHINE AND DOUGLAS COUNTIES

ODOT REGION 3 WHITE CITY
100 ANTELOPE ROAD
WHITE CITY, OREGON 97503
SEPTEMBER 28, 2010
SCALE: 1" = 100'
SHEET 32 OF 33

THIS IS TO CERTIFY THAT THIS MAP WAS PREPARED USING HP DESIGNJET 1055CM, BLACK C4820a INK ON HP MATTE FILM #51642B.

Josephine Co.

ST. HWY. I5 -024 FF