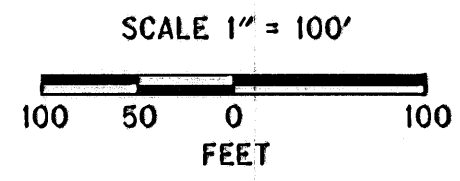
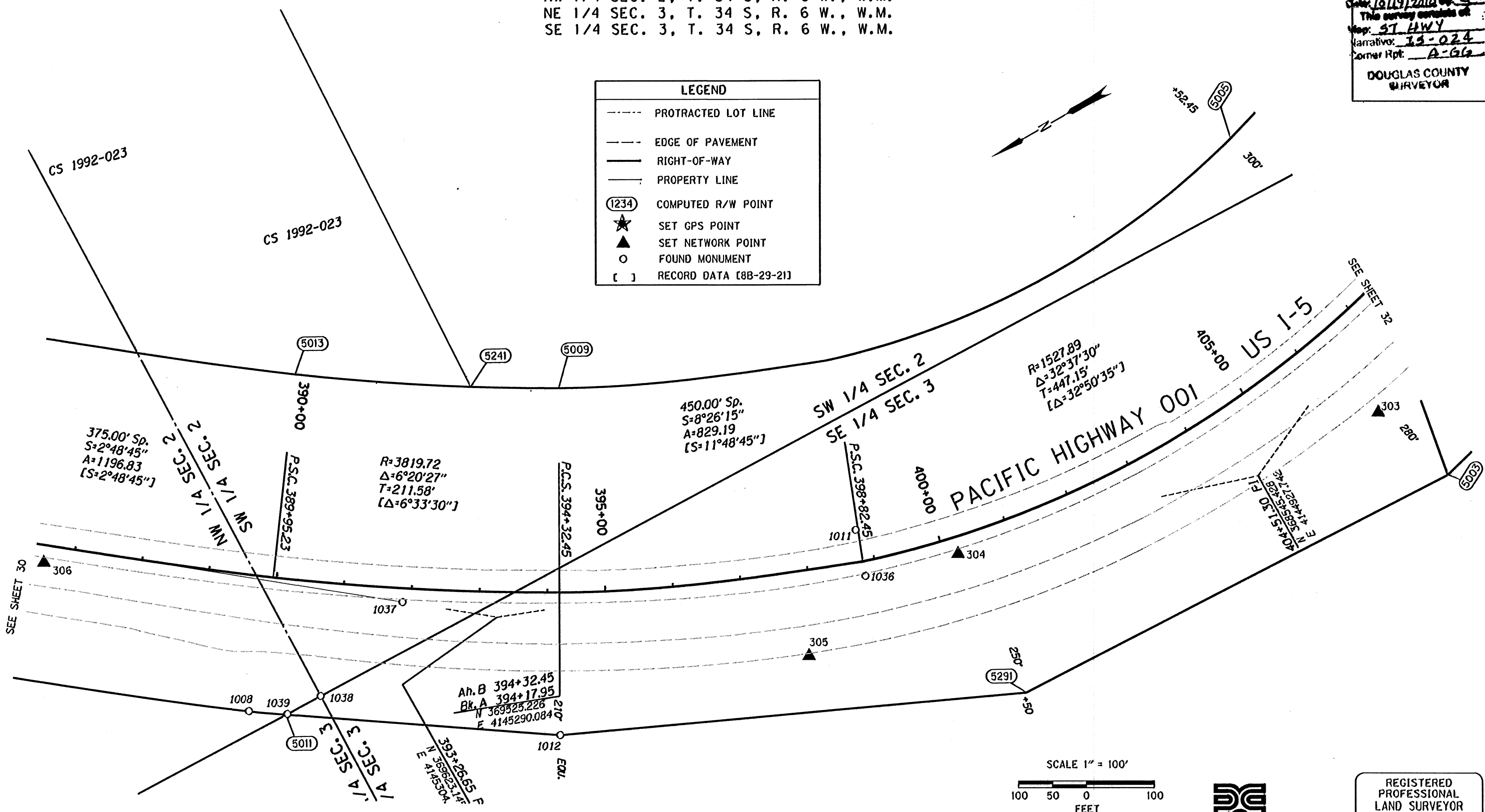


FILED  
Date: 10/19/2010  
This survey consists of:  
Map: ST HWY  
Narrative: 15-024  
Corner Rpt: A-66  
DOUGLAS COUNTY  
SURVEYOR

SW 1/4 SEC. 2, T. 34 S., R. 6 W., W.M.  
NW 1/4 SEC. 2, T. 34 S., R. 6 W., W.M.  
NE 1/4 SEC. 3, T. 34 S., R. 6 W., W.M.  
SE 1/4 SEC. 3, T. 34 S., R. 6 W., W.M.

**LEGEND**

- PROTRACTED LOT LINE
- EDGE OF PAVEMENT
- RIGHT-OF-WAY
- PROPERTY LINE
- (1234) COMPUTED R/W POINT
- ★ SET GPS POINT
- ▲ SET NETWORK POINT
- FOUND MONUMENT
- [ ] RECORD DATA [88-29-21]



REGISTERED PROFESSIONAL LAND SURVEYOR

*David Evans*

**DAVID EVANS AND ASSOCIATES INC.**  
530 CENTER STREET NE, SUITE 605  
SALEM OREGON 97301  
PHONE: 503.361.8635

ODOT

FILE NAME: 16763RET.DGN

OREGON  
JULY 11, 2006  
JON KENNETH BROADWATER  
61360LS  
EXPIRES: 12/31/2011

RECOVERED MONUMENTS AND COMPUTED POINTS LIST

W=WITH, IP=IRON PIPE, IR=IRON ROD, YPC=YELLOW PLASTIC CAP, DRG=ODOT DRAWING B=BOOK P=PAGE  
AC=ALUMINUM CAP, CSN1= COUNTY SURVEY NOT IDENTIFIED

PT. NO.	LDP NORTHING	LDP EASTING	STATION	OFFSET	DATE	DESCRIPTION & REFERENCE DOCUMENTS
1008	370009.64	4145365.81	389+81.05	199.43 RT	11/10/2009	FOUND 5/8" IR W/ 1 1/2" AC, "OREGON STATE HWY DEPT." UP 0.3', ODOT 88-29-21, CS1992-023, CS038-2006
1011	369100.66	4145152.91	398+78.90	47.16 LT	11/16/2009	FOUND 2 1/2" BRASS DISK IN CONCRETE, ODOT 88-29-21
1012	369628.42	4145107.47	394+32.76	209.76 RT	11/17/2009	FOUND 1 1/2" ALUMINUM CAP, "OREGON STATE HWY DEPT." UP 0.1', ODOT 88-29-21
1036	369121.43	4145087.20	398+85.08	37.74 RT	01/20/2010	FOUND 2 1/2" BRASS CAP IN CONCRETE, DOWN 0.2', ODOT 88-29-21
1037	369733.25	4145392.58	391+87.54	0.49 RT	01/20/2010	FOUND 2 1/2" BRASS DISK IN CONCRETE, DOWN 0.4', ODOT 88-29-21, CS 1992-023
1038	369906.63	4145332.47	390+79.63	66.96 RT	01/20/2010	FOUND 2" IP, UP 0.1', CS 1992-023, CS 038-2006
1039	369962.43	4145334.10	390+35.10	197.61 RT	01/20/2010	FOUND 5/8" IR W/ YPC, UP 0.2', "BTS ENG & SURV", CS 038-2006
5003	368301.44	4144791.19	406+50.00	280.00 RT		CALCULATED MONUMENT
5005	368334.28	4145378.81	407+52.45	300.00 LT		CALCULATED MONUMENT
5009	369377.19	4145551.02	394+32.45	300.00 LT		CALCULATED MONUMENT
5011	369964.69	4145334.15	390+33.31	198.88 RT		CALCULATED MONUMENT
5013	369704.68	4145761.56	389+95.23	300.00 LT		CALCULATED MONUMENT
5241	369489.14	4145617.29	392+76.76	300.00 LT		CALCULATED MONUMENT
5291	368999.82	4144820.57	400+51.01	250.00 RT		CALCULATED MONUMENT

**OREGON DEPARTMENT OF TRANSPORTATION**

HORIZONTAL CONTROL, RECOVERY, AND RETRACEMENT SURVEY  
I-5; JUMPOFF JOE-GLENDALE PAVING AND CLIMBING LANES  
GLENDALE TO SUNNY VALLEY  
JOSEPHINE AND DOUGLAS COUNTIES

ODOT REGION 3 WHITE CITY  
100 ANTELOPE ROAD  
WHITE CITY, OREGON 97503

SEPTEMBER 28, 2010  
SCALE: 1" = 100'  
SHEET 31 OF 33

THIS IS TO CERTIFY THAT THIS MAP WAS PREPARED USING HP DESIGNJET 1055CM, BLACK C4820d INK ON HP MATTE FILM #51642B.

Josephine co.

**ST. HWY. I 5 -024 EE**