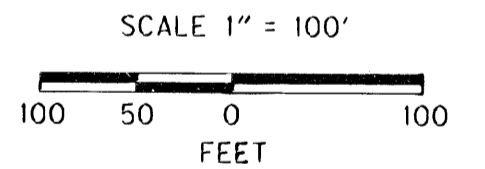
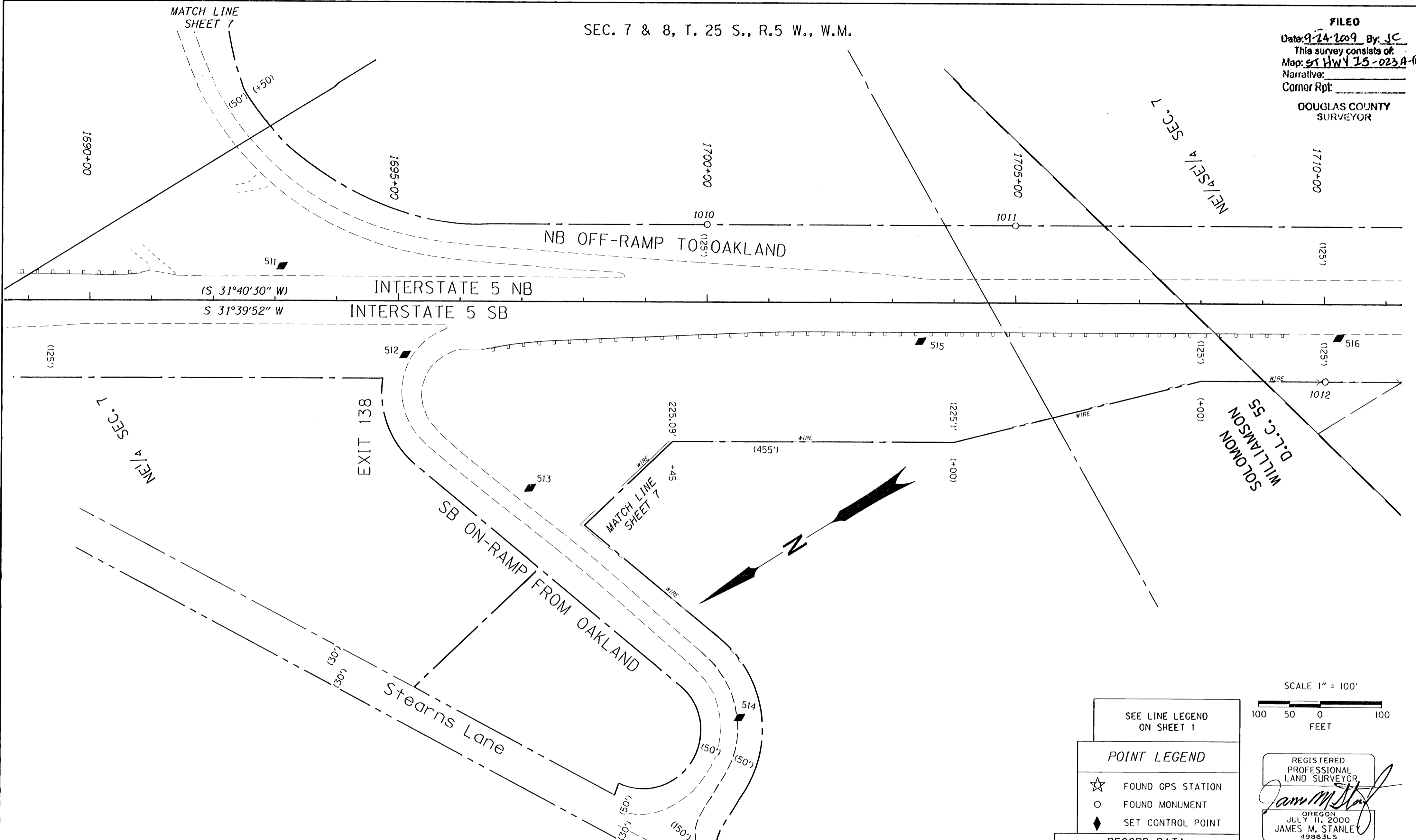


SEC. 7 & 8, T. 25 S., R.5 W., W.M.

**FILED**  
 Date: 9-24-2009 By: JC  
 This survey consists of:  
 Map: ST HWY 15-023 A-M  
 Narrative:  
 Corner Rpt:  
 DOUGLAS COUNTY  
 SURVEYOR



SEE LINE LEGEND ON SHEET 1

**POINT LEGEND**

- ☆ FOUND GPS STATION
- FOUND MONUMENT
- ◆ SET CONTROL POINT

REGISTERED PROFESSIONAL LAND SURVEYOR

*James M. Stanley*

OREGON  
 JULY 11, 2000  
 JAMES M. STANLEY  
 49863LS

EXPIRES 06/30/2010

**RECORD DATA**  
 ( ) PER ODOT R/W DRG. 7B-12-18

CONTROL MONUMENTS NOTE: OFFSETS WITH A - (MINUS) ARE LEFT, WITHOUT ARE RIGHT

PT. NO.	LDP	NORTHING	LDP EASTING	ELEV.	STATION	OFFSET	DATE	DESCRIPTION
511	049212.933	4170841.688	402.44	1693+10.91	-55.71	12/18/08		SET 5/8" IRON REBAR 30" LONG WITH 1 1/2" BRASS CAP STAMPED "ODOT CONTROL 511" 0.2' BELOW SURFACE
512	049117.334	4170415.609	478.17	1695+10.94	88.51	12/18/08		SET 5/8" IRON REBAR 30" LONG WITH 1 1/2" BRASS CAP STAMPED "ODOT CONTROL 512" 0.1' BELOW SURFACE
513	049058.294	4170128.669	480.08	1697+14.57	300.40	12/18/08		SET 5/8" IRON REBAR 30" LONG WITH 1 1/2" BRASS CAP STAMPED "ODOT CONTROL 513" 0.2' BELOW SURFACE
514	048960.810	4169833.243	429.52	1700+55.03	870.14	12/18/08		SET 5/8" IRON REBAR 30" LONG WITH 1 1/2" BRASS CAP STAMPED "ODOT CONTROL 514" 0.1' BELOW SURFACE
515	048393.827	4169998.158	524.45	1703+45.88	82.02	12/18/08		SET 5/8" IRON REBAR 30" LONG WITH 1 1/2" BRASS CAP STAMPED "ODOT CONTROL 515" 0.1' BELOW SURFACE
516	047813.010	4169849.377	588.24	1710+23.33	53.98	12/22/08		SET 5/8" IRON REBAR 30" LONG WITH 1 1/2" BRASS CAP STAMPED "ODOT CONTROL 516" 0.1' BELOW SURFACE

RECOVERED MONUMENTS NOTE: OFFSETS WITH A - (MINUS) ARE LEFT, WITHOUT ARE RIGHT

PT. NO.	LDP	NORTHING	LDP EASTING	STATION	OFFSET	DATE	DESCRIPTION	REFERENCE
1010	048590.124	4170339.178	1699+99.79	125.19	12/30/08		FD. 5/8" IRON ROD 0.20 FT. ABOVE SURFACE, GOOD CONDITION, WHITE CARSONITE POST NEARBY, STATION 1700+00 125 LT	7B 12 18
1011	048165.275	4170078.581	1704+99.24	124.71	12/30/08		FD. 5/8" IRON ROD 0.20 FT. ABOVE SURFACE, GOOD CONDITION, WHITE CARSONITE POST NEARBY, STATION 1705+00 125 LT	7B 12 18
1012	047868.547	4169600.258	1710+01.84	124.94	12/30/08		FD. 5/8" IRON ROD 0.10 FT. ABOVE SURFACE, GOOD CONDITION, WHITE CARSONITE POST NEARBY, STATION 1710+00 125 RT	7B 12 18

**SI FEET** OREGON DEPARTMENT OF TRANSPORTATION

HORIZONTAL CONTROL, RECOVERY AND RETRACEMENT MAP

1-5: N OAKLAND INTCHGE - SUTHERLIN INTCHGE SEC

1-5: SUTHERLIN HILL TRUCK CLIMBING LANE

PACIFIC HIGHWAY

DOUGLAS COUNTY

File: 14492RW.dgn

FOR ODOT REGION 3 SEPTEMBER, 2009

3500 NW. STEWART PKWY. SCALE: 1" = 100'

ROSEBURG, OR. 97470 SHEET 6 OF 13