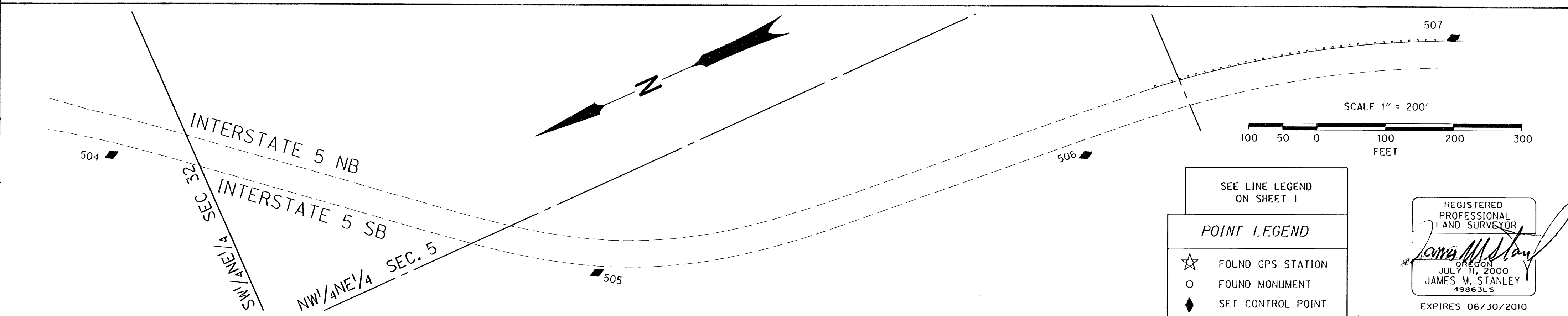
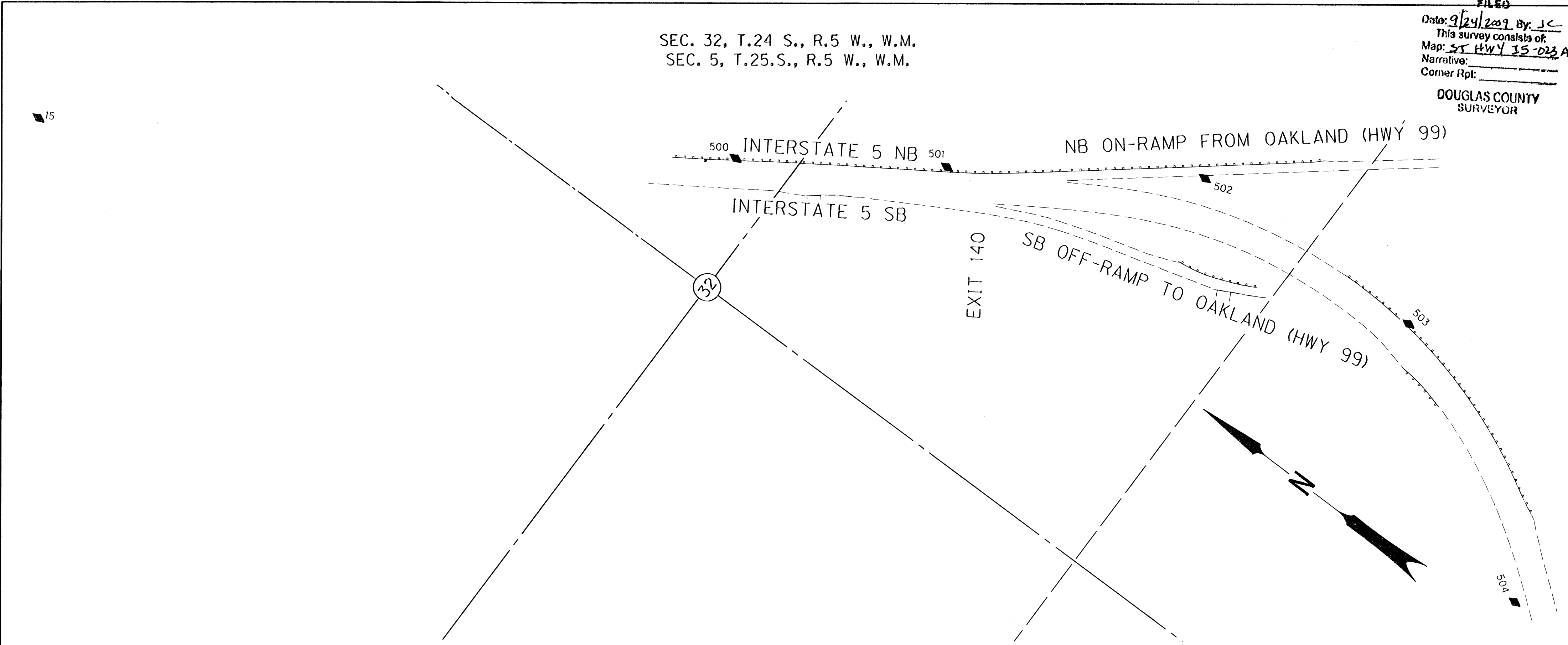


SEC. 32, T.24 S., R.5 W., W.M.  
 SEC. 5, T.25.S., R.5 W., W.M.

FILED  
 Date: 9/24/2009 By: J.C.  
 This survey consists of:  
 Map: ST HWY 15-023 A-H  
 Narrative:  
 Corner Rpt:  
 DOUGLAS COUNTY  
 SURVEYOR



CONTROL POINTS NOTE: OFFSETS WITH A - (MINUS) ARE LEFT, WITHOUT ARE RIGHT

PT. NO.	LDP NORTHING	LDP EASTING	ELEV.	STATION	OFFSET	DATE	DESCRIPTION
15	660940.425	4172707.502				12/9/08	FD. 1/2" SQUARE IRON ROD WITH A 1 1/2" ALUM. CAP STAMPED "O.D.O.T. HORIZ CONTROL 15". FLUSH WITH SURFACE GOOD CONDITION. (CONTROL FD. FROM PREVIOUS O.D.O.T. PROJECT RICE HILL - N. OAKLAND)
500	659237.613	4173837.682				12/18/08	SET 5/8" IRON REBAR 30" LONG WITH 1 1/2" BRASS CAP STAMPED "ODOT CONTROL 500" 0.2' BELOW SURFACE STABILIZED IN CONC.
501	658727.743	4174188.418				12/18/08	SET 5/8" IRON REBAR 30" LONG WITH 1 1/2" BRASS CAP STAMPED "ODOT CONTROL 501" FLUSH WITH SURFACE STABILIZED IN CONC.
502	658105.038	4174815.508				12/18/08	SET 5/8" IRON REBAR 30" LONG WITH 1 1/2" BRASS CAP STAMPED "ODOT CONTROL 502" 0.2' BELOW SURFACE
503	657373.087	4174633.960				12/18/08	SET 5/8" IRON REBAR 30" LONG WITH 1 1/2" BRASS CAP STAMPED "ODOT CONTROL 503" 0.1' BELOW SURFACE
504	656837.745	4174173.583				12/18/08	SET 5/8" IRON REBAR 30" LONG WITH 1 1/2" BRASS CAP STAMPED "ODOT CONTROL 504" 0.1' BELOW SURFACE
505	655480.835	4173279.935				12/18/08	SET 1" BRASS PLUG STAMPED "ODOT 505" FLUSH WITH SURFACE IN BED ROCK
506	654035.551	4173009.292				12/18/08	SET 5/8" IRON REBAR 30" LONG WITH 1 1/2" BRASS CAP STAMPED "ODOT CONTROL 506" 0.1' BELOW SURFACE

SEE LINE LEGEND ON SHEET 1

**POINT LEGEND**

- ☆ FOUND GPS STATION
- FOUND MONUMENT
- ◆ SET CONTROL POINT

REGISTERED PROFESSIONAL LAND SURVEYOR  
*James M. Stanley*  
 OREGON  
 JULY 11, 2000  
 JAMES M. STANLEY  
 49863LS  
 EXPIRES 06/30/2010

**SI FEET** OREGON DEPARTMENT OF TRANSPORTATION

HORIZONTAL CONTROL, RECOVERY AND RETRACEMENT MAP  
 I-5: N OAKLAND INTCHGE - SUTHERLIN INTCHGE SEC  
 I-5: SUTHERLIN HILL TRUCK CLIMBING LANE  
 PACIFIC HIGHWAY  
 DOUGLAS COUNTY  
 File: 14492RW.dgn

FOR ODOT REGION 3  
 3500 NW. STEWART PKWY.  
 ROSEBURG, OR. 97470

SEPTEMBER, 2009  
 SCALE: 1" = 200'  
 SHEET 3 OF 13