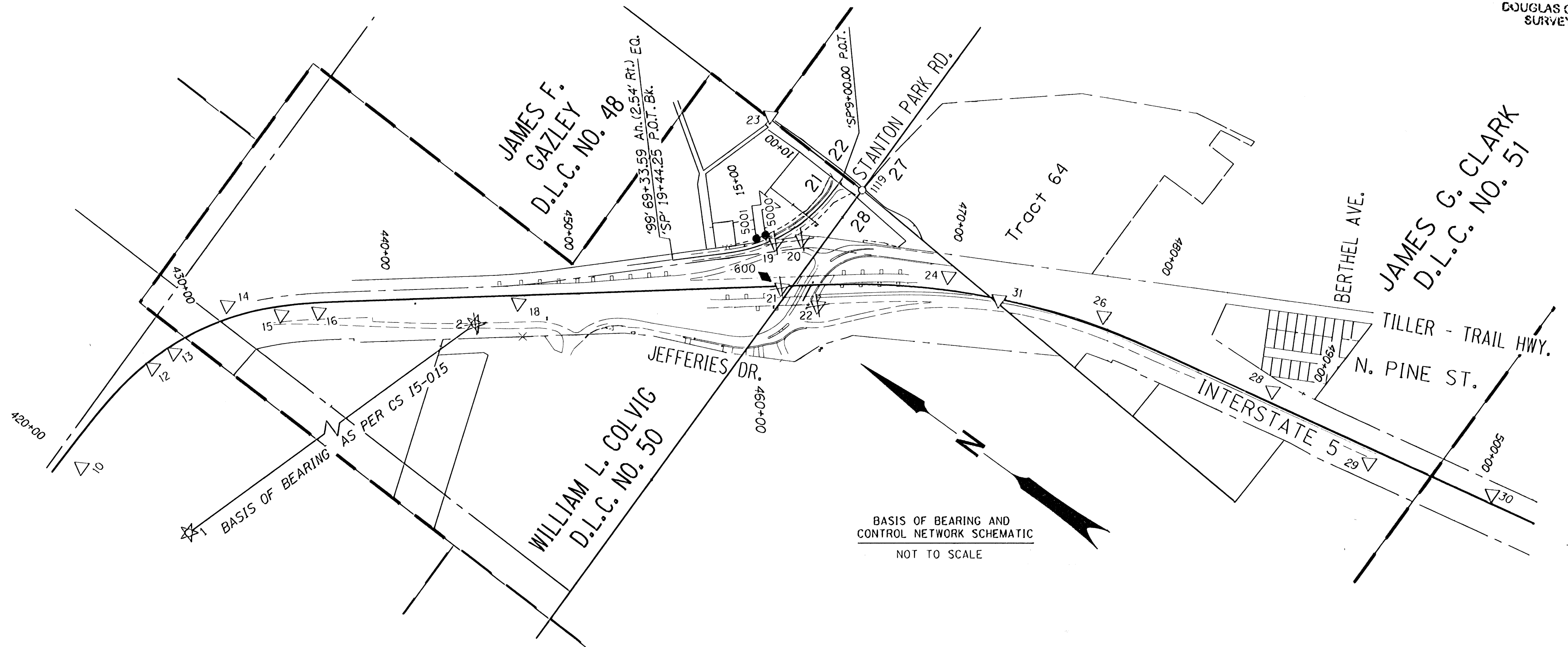


FILED
 Date: 10/8/2008 By: JC
 This survey consists of:
 Map: ST HWY 15-021A-C
 Narrative:
 Corner Rpt:
 DOUGLAS COUNTY
 SURVEYOR



CONTROL MONUMENTS

PT. NO.	LDP NORTHING	LDP EASTING	ELEVATION	DATE	DESCRIPTION	REFERENCE
1	479535.834	4170093.914	712.33	2/14/08	FD. 3" BRASS CAP STAMPED "OREGON D.O.T. DONOT DISTURB GEODETIC CONTROL PT 1997, CHRIS"	C.S. 85-19-M
2	478198.857	4174239.971	718.96	2/14/08	DESTROYED 3" BRASS CAP STAMPED "OREGON D.O.T. DO NOT DISTURB LYNNE 1997 GEODETIC CONTROL PT"	C.S. 85-19-O
10	479445.702	4172392.096	744.10	2/14/08	FD. 1 1/2" ALUMINUM CAP STAMPED "ODOT HORIZ CONTROL, 72"	15-002 A-K
12	479448.432	4173040.972	745.95	2/14/08	FD. 1 1/2" ALUMINUM CAP STAMPED "ODOT HORIZ CONTROL, 73"	15-002 A-K
13	479402.973	4173172.851	746.81	2/14/08	FD. 1 1/2" ALUMINUM CAP STAMPED "ODOT HORIZ CONTROL, 74"	15-002 A-K
14	479322.921	4173543.047	722.53	2/14/08	FD. 1 1/2" ALUMINUM CAP STAMPED "ODOT HORIZ CONTROL, 80"	15-002 A-K
15	479062.482	4173671.461	734.77	2/14/08	FD. 1 1/2" ALUMINUM CAP STAMPED "ODOT HORIZ CONTROL, 75"	15-002 A-K
16	478909.266	4173799.970	730.28	2/14/08	FD. 1 1/2" ALUMINUM CAP STAMPED "ODOT HORIZ CONTROL, 76"	15-002 A-K
17	478280.005	4174439.858	717.33	2/14/08	FD. 5/8" IRON REBAR WITH 1 1/2" BRASS CAP STAMPED "ODOT CONTROL 17"	15-015 A-J
18	478079.394	4174464.957	716.71	2/14/08	FD. 1 1/2" ALUMINUM CAP STAMPED "ODOT HORIZ CONTROL 77"	15-002 A-K
19	477162.231	4175529.471	710.57	2/14/08	DESTROYED PK NAIL WITH WASHER	15-015 A-J
20	477056.097	4175626.114	712.49	2/14/08	DESTROYED RAILROAD SPIKE STAMPED "503"	15-002 A-K
21	476999.666	4175353.470	729.34	2/14/08	DESTROYED 5/8" IRON ROD WITH ALUMINUM CAP STAMPED "ODOT HORIZ CONTROL 78"	15-002 A-K
22	476782.396	4175391.119	732.01	2/14/08	DESTROYED 5/8" IRON ROD WITH ALUMINUM CAP STAMPED "ODOT HORIZ CONTROL 79"	15-002 A-K
23	477580.124	4178069.803	702.81	2/14/08	FD. 5/8" IRON REBAR WITH 1 1/2" BRASS CAP STAMPED "ODOT CONTROL 23"	15-015 A-J
24	476311.789	4175926.847	745.88	2/14/08	FD. 5/8" IRON REBAR WITH 1 1/2" BRASS CAP STAMPED "ODOT CONTROL 24"	15-015 A-J
25	476001.780	4175868.810	767.35	2/14/08	FD. 5/8" IRON REBAR WITH 1 1/2" BRASS CAP STAMPED "ODOT CONTROL 25"	15-015 A-J
26	475518.948	4176242.315	759.96	2/14/08	FD. 5/8" IRON ROD WITH 1 1/2" ALUMINUM CAP STAMPED "ODOT HORIZ CONTROL 82"	15-002 A-K
28	474557.223	4176447.738		2/14/08	FD. 1 1/2" ALUMINUM CAP STAMPED "ODOT HORIZ CONTROL 83"	15-002 A-K
29	473917.810	4176440.844		2/14/08	FD. 1 1/2" ALUMINUM CAP STAMPED "ODOT HORIZ CONTROL 84"	15-002 A-K
30	473289.902	4176691.005		2/14/08	FD. 1 1/2" ALUMINUM CAP STAMPED "ODOT HORIZ CONTROL 85"	15-002 A-K
31	476020.942	4175983.923		2/14/08	FD. 1 1/2" ALUMINUM CAP STAMPED "ODOT HORIZ CONTROL 81"	15-002 A-K
600	477102.320	4175349.200		2/14/08	SET WOOD HUB AND TACK	

SEE SET MONUMENT TABLE ON SHEET 3
 SEE RECOVERED MONUMENT TABLE ON SHEET 3
 SEE LINE & POINT LEGEND ON SHEET 2

REGISTERED PROFESSIONAL LAND SURVEYOR
James M. Stanley
 OREGON
 JULY 11, 2000
 JAMES M. STANLEY
 49863LS
 EXPIRES 06/30/2010

31 FEET
 OREGON DEPARTMENT OF TRANSPORTATION
 RIGHT-OF-WAY BOUNDARY MONUMENTATION MAP
 I-5: EXIT 99 INTERCHANGE IMPROVEMENTS
 INTERSTATE 5
 DOUGLAS COUNTY

FOR ODOT REGION 3
 3500 NW. STEWART PKWY.
 ROSEBURG, OR. 97470
 OCTOBER 1, 2008
 SHEET 1 OF 3