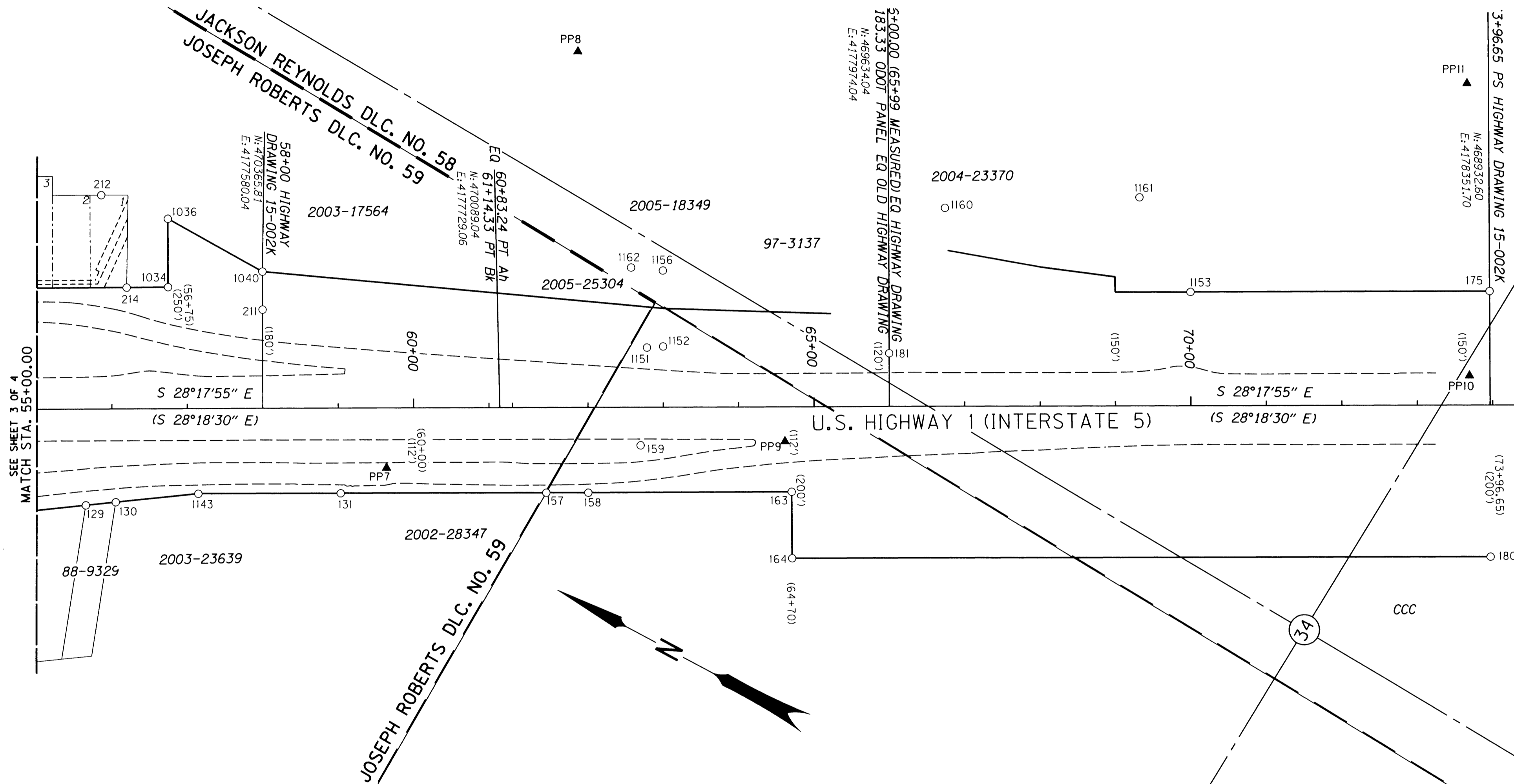


LEGEND

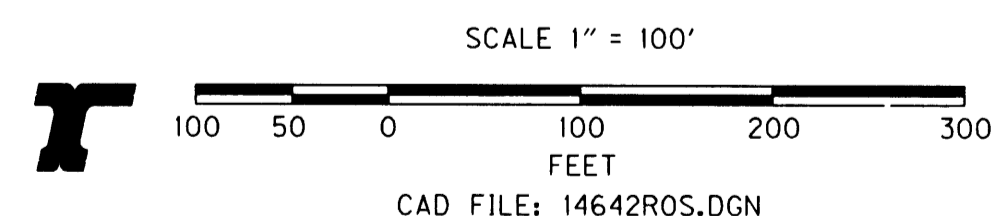
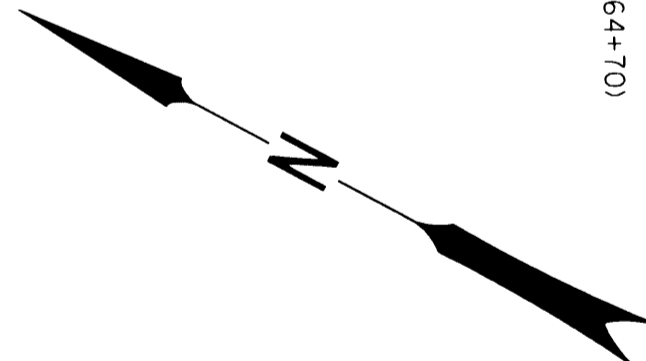
- ▲ NETWORK POINT
SET PK NAIL IN
PHOTOGRAMMETRIC
PREMARK
- FOUND MONUMENT.
- PR'MARY CENTER LINE
- EXISTING RIGHT OF WAY
- - - EXISTING EASEMENT
- - - EDGE OF PAVEMENT
- () RECORD DATA PER
ODOT DRAWING 7B-24-16

THE N.W. 1/4 AND THE N.E. 1/4 AND
THE S.E. 1/4 OF SEC. 34,
T. 30 S., R. 5 W., W.M.

FILED
date: 8/20/2007 by JP
This survey consists of 5 pages
Map: ST HWY 15-020 D
Narrative: _____
Corner Rpt: _____
DOUGLAS COUNTY
SURVEYOR



SEE SHEET 3 OF 4
MATCH STA. 55+00.00



REGISTERED
PROFESSIONAL
LAND SURVEYOR

OREGON
FEB. 4, 1983
DARRYL J. ANDERSON
2034
RENEWAL: 12-31-07

OREGON DEPARTMENT OF TRANSPORTATION
HORIZONTAL CONTROL, RECOVERY AND RETRACEMENT MAP
CITY OF CANYONVILLE
U.S. HIGHWAY 1 (INTERSTATE 5)
DOUGLAS COUNTY, OREGON
JULY 24, 2007 FOR ODOT REGION 3 SCALE: 1" = 100'
3500 NW STEWART PARKWAY, ROSEBURG, OR 97470-1687
BUNDLE 315 SHEET 4 OF 5

SEE SHEET 5 FOR FOUND MONUMENT TABLE

ST. HWY 15-020 D