

THE S.W. 1/4 OF SEC. 27, AND N.W. 1/4
AND THE N.E. 1/4 AND THE S.E. 1/4 OF SEC. 34,
T. 30 S., R. 5 W., W.M.

FILED
Date: 8/28/2007 By: JP
This survey consists of: 5 PAGES
Map: ST HWY 15-020 B
Narrative: _____
Corner Rpt: _____

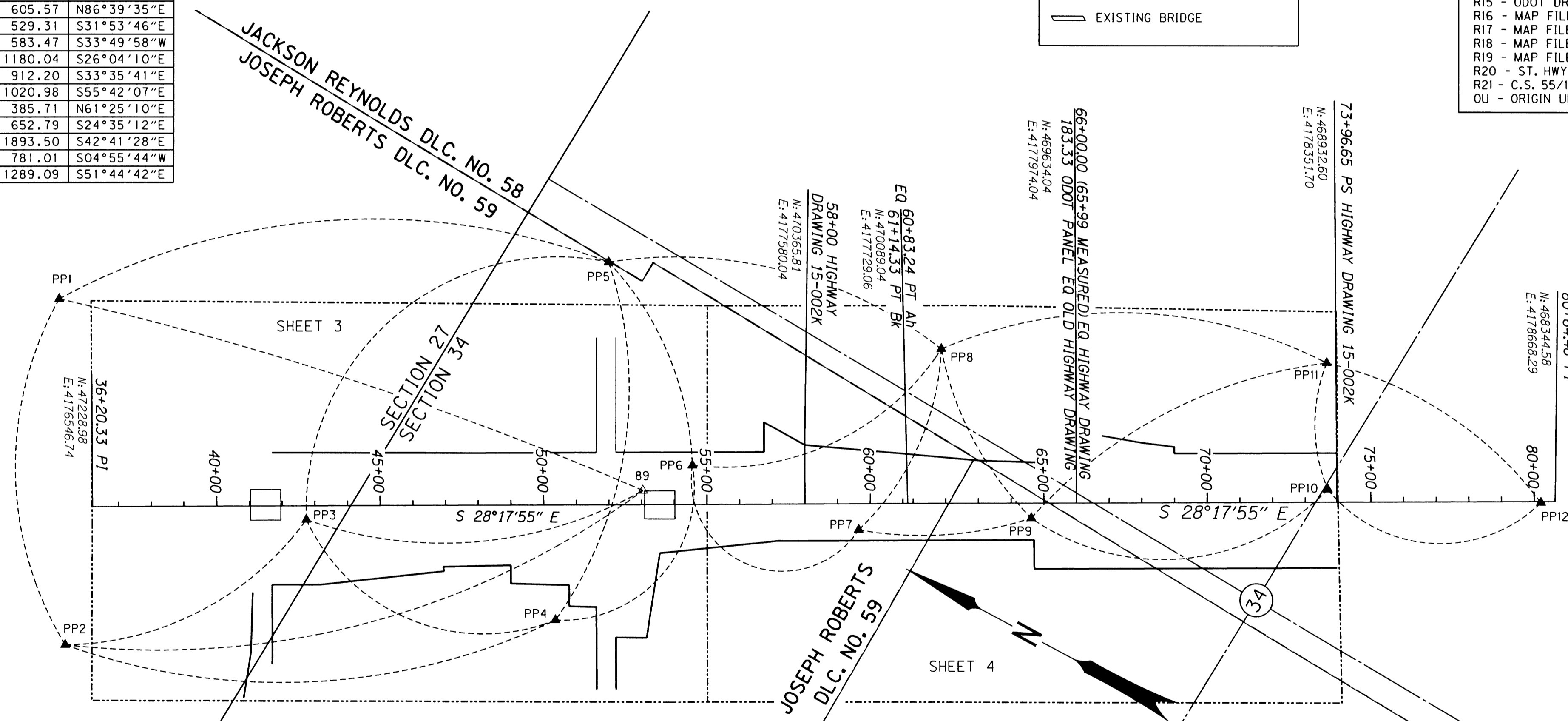
DOUGLAS COUNTY
SURVEYOR

DISTANCE AND BEARING TABLE
DIST. = HORIZONTAL DISTANCE

FROM	TO	DIST.	BEARING
PP1	PP2	1051.14	S60°57'35"W
PP1	PP5	1684.32	S31°54'50"E
PP1	89	1877.12	S10°01'15"E
PP2	PP3	829.67	S55°18'03"E
PP2	PP4	1501.13	S30°56'55"E
PP2	89	1828.24	S42°56'50"E
PP3	PP4	820.05	S06°17'31"E
PP3	PP5	1212.74	S68°21'46"E
PP3	89	1033.14	S33°03'16"E
PP4	PP5	1100.73	N70°28'18"E
PP4	PP6	630.61	S76°19'55"E
PP5	PP6	669.01	S39°24'08"W
PP5	PP8	1052.17	S13°30'53"E
PP6	PP7	545.38	S06°57'07"E
PP6	PP8	840.09	S52°57'25"E
PP7	PP8	605.57	N86°39'35"E
PP7	PP9	529.31	S31°53'46"E
PP8	PP9	583.47	S33°49'58"W
PP8	PP10	1180.04	S26°04'10"E
PP9	PP10	912.20	S33°35'41"E
PP9	PP11	1020.98	S55°42'07"E
PP10	PP11	385.71	N61°25'10"E
PP10	PP12	652.79	S24°35'12"E
PP10	86	1893.50	S42°41'28"E
PP11	PP12	781.01	S04°55'44"W
PP12	86	1289.09	S51°44'42"E

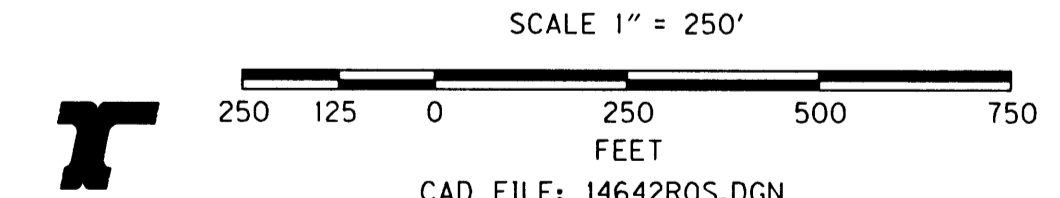
LEGEND	
▲	SET PK NAIL IN PHOTOGRAMMETRIC PREMARK
△	FOUND MONUMENT, USED AS NETWORK POINT
- - -	GPS OBSERVATION
—	EXISTING BRIDGE

REFERENCE LIST	
R1	- MAP FILE NO. M119-56
R2	- MAP FILE NO. M119-60B
R3	- MAP FILE NO. M104-64
R4	- C.S. 47/96
R5	- C.S. 55/24
R6	- MAP FILE NO. M50-36
R7	- C.S. 55/14-1
R8	- MAP FILE NO. M85-79
R9	- C.S. 55/347-2
R10	- MAP FILE NO. M42-78
R11	- MAP FILE NO. M132-14
R12	- C.S. 58/151-20
R13	- PLAT OF GOODELL TRACT
R14	- MAP FILE NO. M67-76
R15	- ODOT DRG. NO. 8B-30-24
R16	- MAP FILE NO. M33-26
R17	- MAP FILE NO. M98-24
R18	- MAP FILE NO. M123-47
R19	- MAP FILE NO. M99-39
R20	- ST. HWY. 15-019A&B
R21	- C.S. 55/13
OU	- ORIGIN UNKNOWN



NETWORK/TRaverse POINT DESCRIPTION TABLE *ALL SET CONTROL MONUMENTS ARE PK NAILS IN PHOTOGRAMMETRY PREMARKS UNLESS NOTED.

PT. NO.	DESCRIPTION
PP1	SET PK NAIL, PHOTOGRAMMETRIC PREMARK
PP2	SET PK NAIL, PHOTOGRAMMETRIC PREMARK
PP3	SET PK NAIL, PHOTOGRAMMETRIC PREMARK
PP4	SET PK NAIL, PHOTOGRAMMETRIC PREMARK
PP5	SET PK NAIL, PHOTOGRAMMETRIC PREMARK
PP6	SET PK NAIL, PHOTOGRAMMETRIC PREMARK
PP7	SET PK NAIL, PHOTOGRAMMETRIC PREMARK
PP8	SET PK NAIL, PHOTOGRAMMETRIC PREMARK
PP9	SET PK NAIL, PHOTOGRAMMETRIC PREMARK
PP10	SET PK NAIL, PHOTOGRAMMETRIC PREMARK
PP11	SET PK NAIL, PHOTOGRAMMETRIC PREMARK
PP12	SET PK NAIL, PHOTOGRAMMETRIC PREMARK
89	FOUND ALUMINUM ODOT CONTROL CAP
86	FOUND ALUMINUM ODOT CONTROL CAP



REGISTERED PROFESSIONAL LAND SURVEYOR
OREGON FEB. 4, 1983
DARRYL J. ANDERSON 2034
RENEWAL: 12-31-07

OREGON DEPARTMENT OF TRANSPORTATION
HORIZONTAL CONTROL, RECOVERY AND RETRACEMENT MAP
CITY OF CANYONVILLE
U.S. HIGHWAY 1 (INTERSTATE 5)
DOUGLAS COUNTY, OREGON
JULY 24, 2007 FOR ODOT REGION 3 SCALE: 1" = 250'
3500 NW STEWART PARKWAY, ROSEBURG, OR 97470-1687
BUNDLE 315 SHEET 2 OF 5

ST. HWY 15-020 B