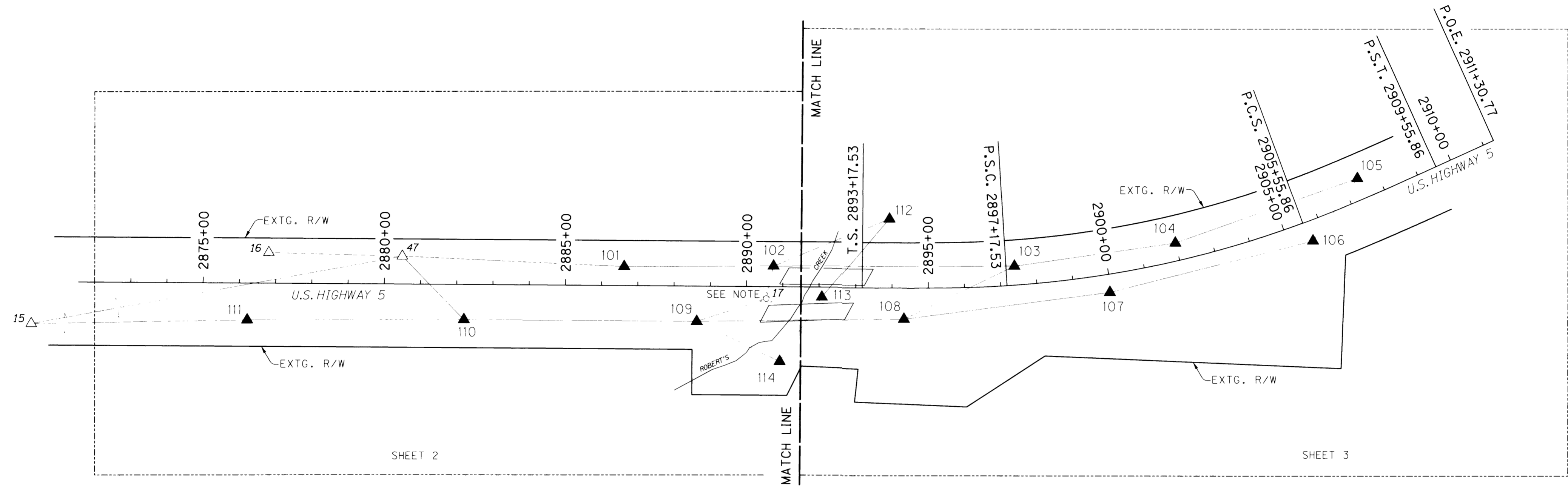


S.W. 1/4 SEC. 13, S.E. 1/4 SEC. 14, N.E. 1/4 SEC. 23, AND N.W. 1/4 SEC. 24,
T. 28 S., R. 6 W., W.M.

FILED
Date: 11-30-2004
Map: ST. HWY 15-0184-C
N. _____
Contract: _____
DOUGLAS COUNTY
Surveyor

LEGEND	
▲	SET NETWORK POINT
△	FOUND NETWORK POINT
○	FOUND MONUMENT USED AS NETWORK POINT
△---△	TERRESTRIAL OBSERVATION LINE



NARRATIVE:

PURPOSE:
THIS SURVEY WAS MADE IN PREPARATION FOR THE PROPOSED REPLACEMENT OF THE INTERSTATE 5 BRIDGES OVER ROBERTS CREEK AND ROBERTS CREEK ROAD. THIS SURVEY SERVES TO:

- 1) ESTABLISH HORIZONTAL AND VERTICAL SURVEY CONTROL;
- 2) LOCATE AND DOCUMENT THE POSITIONS OF ANY MONUMENTS OF RECORD THAT MAY BE DESTROYED DURING CONSTRUCTION OF THE PROPOSED REPLACEMENT BRIDGES;
- 3) RESOLVE THE EXISTING RIGHT-OF-WAY IN THE VICINITY OF THE BRIDGES.

HORIZONTAL DATUM & BASIS OF BEARING:
THE HORIZONTAL DATUM IS ON A LOCAL DATUM PLANE REFERENCED TO CONTROL PTS 15, 16, 17, & 47 OF ODOT'S "HORIZONTAL CONTROL AND RECOVERY MAP, GARDEN VALLEY - ROBERTS CREEK SECTION, INTERSTATE 5" RECORDED IN DOUGLAS COUNTY SURVEY RECORDS AS MAP M133-75, SHEETS A THROUGH L. COORDINATE VALUES FROM THE ODOT SURVEY WERE CONVERTED FROM METRIC TO US SURVEY FEET, WHERE 1 METER = 3937/1200 US SURVEY FEET.

VERTICAL DATUM:
THE VERTICAL DATUM IS THE NATIONAL GEODETIC VERTICAL DATUM 1929 (NGVD 29) REFERENCED TO OREGON STATE HIGHWAY DEPARTMENT (OSHD) BENCHMARK DESIGNATED "V248", A BRASS DISK IN A BOX CULVERT HEAD WALL ON THE WEST SIDE OF HIGHWAY 99, APPROXIMATELY 500 FEET NORTH OF HWY 42. PUBLISHED BENCHMARK ELEVATION IS 518.085'.

HORIZONTAL ADJUSTMENT:
TERRESTRIAL OBSERVATIONS WERE MADE USING A TRIMBLE 5603 TOTAL STATION INSTRUMENT. THE HORIZONTAL POSITIONS OF ODOT CONTROL POINTS 15, 16, 17, & 47 WERE HELD FIXED IN THE LEAST SQUARES NETWORK. THE MAXIMUM SEMI-MAJOR AXIS OF THE ERROR ELLIPSES AT THE 95% CONFIDENCE LEVEL WERE 0.06' FOR THE CONTROL POINTS AND 0.07' FOR THE BOUNDARY MONUMENTS.

VERTICAL ADJUSTMENT:
DIFFERENTIAL LEVELS WERE RUN USING A LEICA NA2002 DIGITAL LEVEL. A CLOSED LEVEL CIRCUIT WAS RUN FROM OSHD BENCHMARK "V248", THROUGH STATIONS 101-114, AND BACK TO "V248". THE RAW CLOSURE OF THE LEVEL CIRCUIT WAS LESS THAN 0.01'. NO ADJUSTMENT WAS MADE.

RIGHT OF WAY RESOLUTION:
THE POSITIONS OF THE TIED OREGON DEPARTMENT OF TRANSPORTATION (ODOT) RIGHT OF WAY (R/W) MONUMENTS WERE HELD AS THE BASIS FOR DETERMINING THE LOCATION OF R/W CENTERLINE ALIGNMENT. CENTERLINE DATA WAS OBTAINED FROM ODOT DRAWINGS NUMBER 7B-23-1 & 7B-24-12 AND WAS APPLIED TO THESE LOCATIONS. R/W DIMENSIONS OBTAINED FROM THESE DRAWINGS WERE CONFIRMED BY DOCUMENTS OF RECORD. RECORD R/W DIMENSIONS WERE BEST FIT TO MATCH MONUMENTS 206, 225, & 226

NETWORK/TRaverse POINT COORDINATE TABLE LDP = LOCAL DATUM PLANE

PT. NO.	LDP NORTHING	LDP EASTING	ELEV.	DESCRIPTION
15	548319.2774	1235930.3333	606.42	FOUND 1-1/2" BRASS CAP ON IRON ROD STAMPED, "ODOT CONTROL 15" PER "ST. HWY. 15-006" (BY ODOT, 1999).
16	547053.9420	1236158.2987	584.84	FOUND 1-1/2" BRASS CAP ON IRON ROD STAMPED, "ODOT CONTROL 16" PER "ST. HWY. 15-006" (BY ODOT, 1999).
17	545678.8332	1236040.1395	572.88	FOUND 1-1/2" BRASS CAP ON IRON ROD STAMPED, "ODOT CONTROL 17" PER "ST. HWY. 15-006" (BY ODOT, 1999).
47	546685.6947	1236148.0231	573.25	FOUND 1-1/2" BRASS CAP ON IRON ROD STAMPED, "ODOT CONTROL 47" PER "ST. HWY. 15-006" (BY ODOT, 1999).
101	546073.2564	1236119.4443	570.09	SET 5/8" x 30" IRON ROD WITH ORANGE PLASTIC CAP STAMPED "BLUEDOT CONTROL"
102	545661.1395	1236120.6282	574.32	SET 5/8" x 30" IRON ROD WITH ORANGE PLASTIC CAP STAMPED "BLUEDOT CONTROL"
103	544997.9401	1236122.6607	598.30	SET 5/8" x 30" IRON ROD WITH ORANGE PLASTIC CAP STAMPED "BLUEDOT CONTROL"
104	544553.0802	1236186.9947	623.25	SET 5/8" x 30" IRON ROD WITH ORANGE PLASTIC CAP STAMPED "BLUEDOT CONTROL"
105	544050.2894	1236365.9373	657.93	SET 5/8" x 30" IRON ROD WITH ORANGE PLASTIC CAP STAMPED "BLUEDOT CONTROL"
106	544172.5781	1236193.0936	650.63	SET 5/8" x 30" IRON ROD WITH ORANGE PLASTIC CAP STAMPED "BLUEDOT CONTROL"
107	544733.8701	1236050.2470	615.08	SET 5/8" x 30" IRON ROD WITH ORANGE PLASTIC CAP STAMPED "BLUEDOT CONTROL"
108	545302.4758	1235975.2397	586.21	SET 5/8" x 30" IRON ROD WITH ORANGE PLASTIC CAP STAMPED "BLUEDOT CONTROL"
109	545873.3806	1235967.1752	572.13	SET 5/8" x 30" IRON ROD WITH ORANGE PLASTIC CAP STAMPED "BLUEDOT CONTROL"
110	546516.1281	1235971.9218	573.77	SET 5/8" x 30" IRON ROD WITH ORANGE PLASTIC CAP STAMPED "BLUEDOT CONTROL"
111	547113.9402	1235971.4781	578.82	SET 5/8" x 30" IRON ROD WITH ORANGE PLASTIC CAP STAMPED "BLUEDOT CONTROL"
112	545342.5081	1236252.8556	555.43	SET 5/8" x 30" IRON ROD WITH ORANGE PLASTIC CAP STAMPED "BLUEDOT CONTROL"
113	545527.8534	1236034.8286	553.33	SET SPIKE WITH WASHER STAMPED "BLUEDOT CONTROL" IN ASPHALT
114	545644.1896	1235857.0594	552.14	SET 5/8" x 30" IRON ROD WITH ORANGE PLASTIC CAP STAMPED "BLUEDOT CONTROL"

REGISTERED PROFESSIONAL LAND SURVEYOR
Mark J. Mayer
OREGON
JULY 14, 1998
MARK J. MAYER
2887
RENEWAL: 12-31-04

bluedot group
land surveying & mapping
6750 franklin st, suite b
tigard, or 97223
v. 503.209.0558
f. 503.620.2771

CAD FILE: 04012-ROBERTS CREEK ROS.DGN

OREGON DEPARTMENT OF TRANSPORTATION
HORIZONTAL CONTROL, RECOVERY AND RETRACEMENT MAP
I-5 OVERPASS AT ROBERTS CREEK RD.
U.S. HIGHWAY 5
DOUGLAS COUNTY, OREGON

NOVEMBER 17, 2004 FOR ODOT REGION 3 SCALE: 1" = 200'
355 CAPITOL ST. N.E., SALEM, OR 97301-3871
KEY NO. 13450 SHEET 1 OF 3