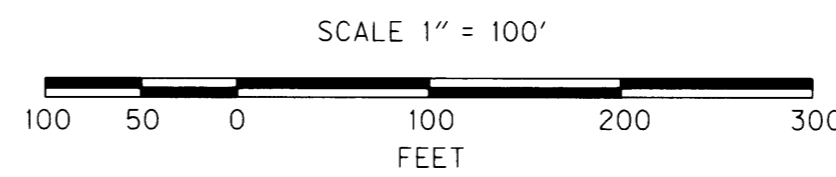
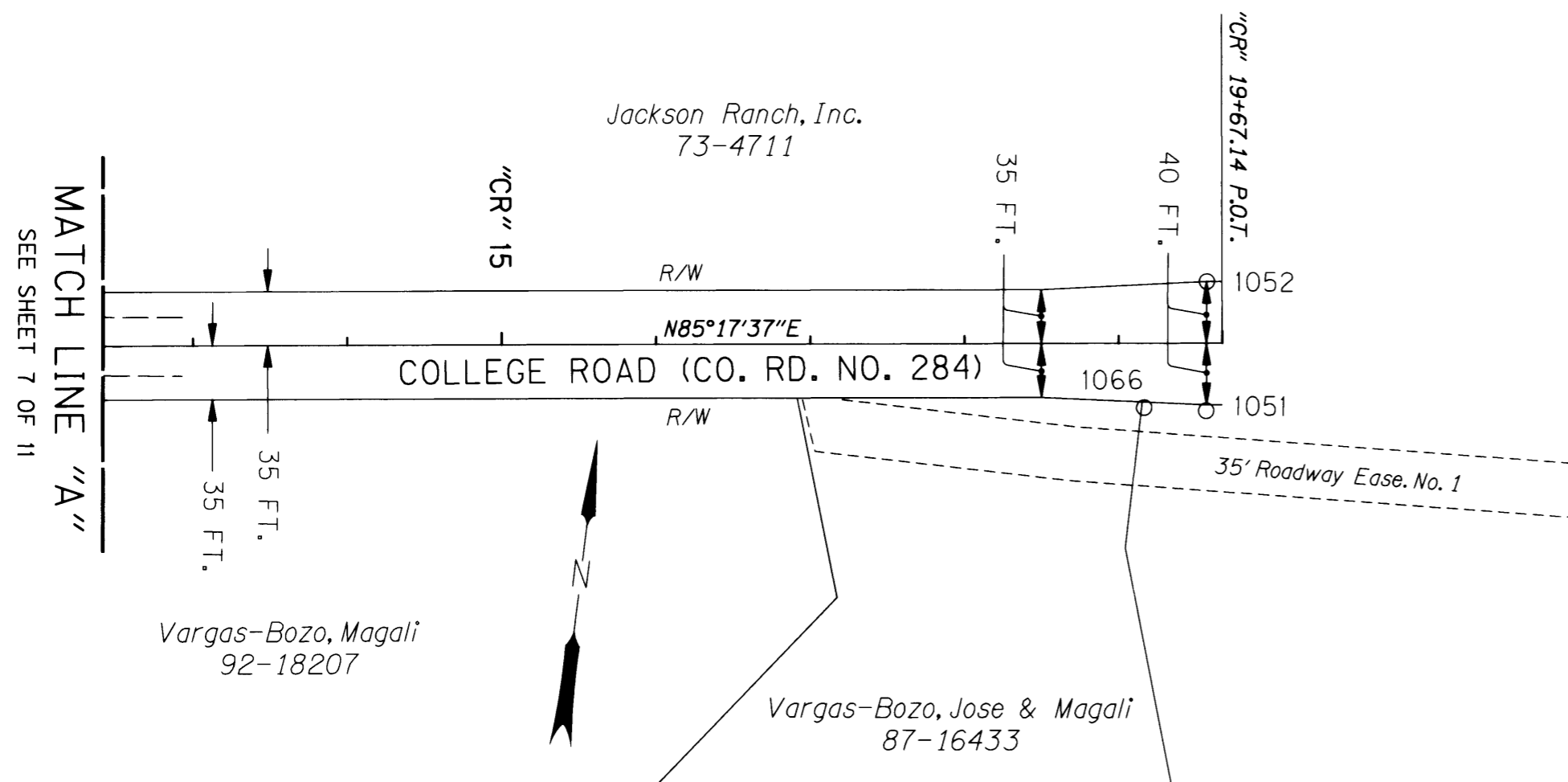
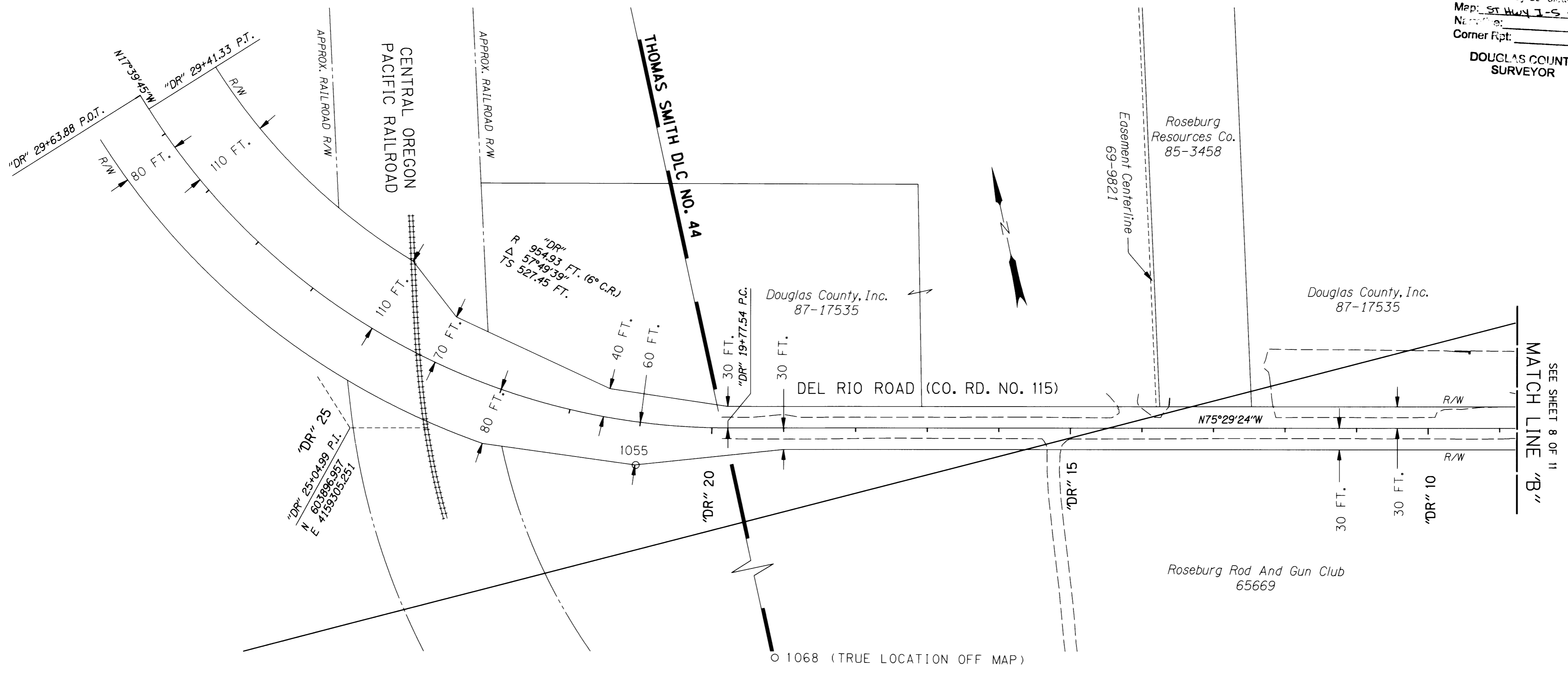


SE 1/4 & SW 1/4 SEC. 24 AND NW 1/4 SEC. 25, T. 26 S., R. 6 W., W.M.

FILED
 Date: 4-15-2004 By: JC
 This survey consists of:
 Map: ST HWY 15-016 A-B
 Name:
 Corner Rpt:
 DOUGLAS COUNTY SURVEYOR



LEGEND	
()	RECORD DATA
○	FOUND MONUMENT

REGISTERED PROFESSIONAL LAND SURVEYOR
Christine V. Blevins
 OREGON JULY 19, 1994
CHRISTINE V. BLEVINS
 2669
 EXPIRES: DEC. 31, 2005

OREGON DEPARTMENT OF TRANSPORTATION
 HORIZONTAL CONTROL, RECOVERY AND RETRACEMENT MAP
 I-5: EXIT 129 / N. UMPQUA RIVER (WINCHESTER) BRIDGES
 INTERSTATE 5 AND OAKLAND-SHADY HIGHWAY
 DOUGLAS COUNTY
 MARCH 24, 2004 FOR ODOT REGION 3
 3500 NW STEWART PARKWAY ROSEBURG, OR 97470
 SHEET 11 OF 11