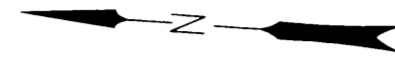


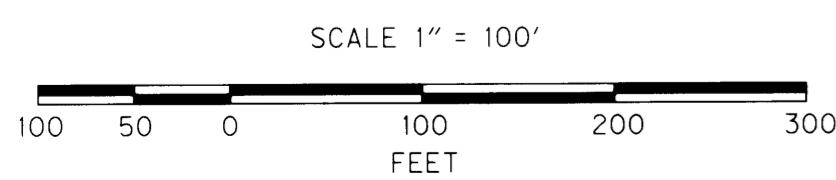
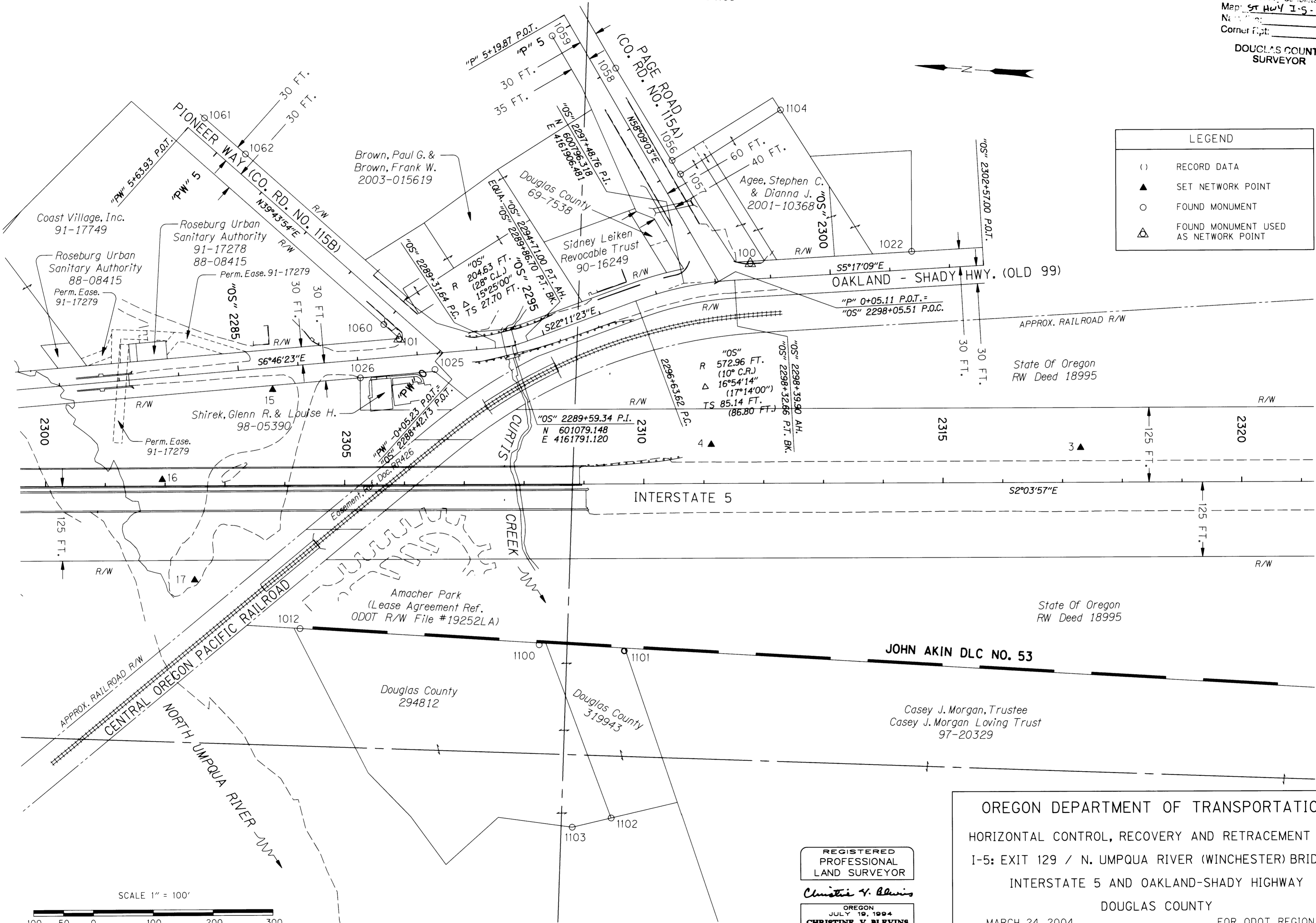
NE 1/4 & SE 1/4 SEC. 25, T. 26 S., R. 6 W., W.M.

o 1105

FILED  
Date: 4-15-2004 By: JC  
This survey consists of:  
Map: ST HWY I-5-016A-K  
Name:  
Corner Pkt:  
DOUGLAS COUNTY  
SURVEYOR



LEGEND	
( )	RECORD DATA
▲	SET NETWORK POINT
○	FOUND MONUMENT
△	FOUND MONUMENT USED AS NETWORK POINT



REGISTERED  
PROFESSIONAL  
LAND SURVEYOR  
*Christine V. Blevins*  
OREGON  
JULY 19, 1994  
**CHRISTINE V. BLEVINS**  
2889  
EXPIRES: DEC. 31, 2005

OREGON DEPARTMENT OF TRANSPORTATION  
HORIZONTAL CONTROL, RECOVERY AND RETRACEMENT MAP  
I-5: EXIT 129 / N. UMPQUA RIVER (WINCHESTER) BRIDGES  
INTERSTATE 5 AND OAKLAND-SHADY HIGHWAY  
DOUGLAS COUNTY  
MARCH 24, 2004 FOR ODOT REGION 3  
3500 NW STEWART PARKWAY ROSEBURG, OR 97470  
SHEET 9 OF 11

ST. HWY. 15-0161