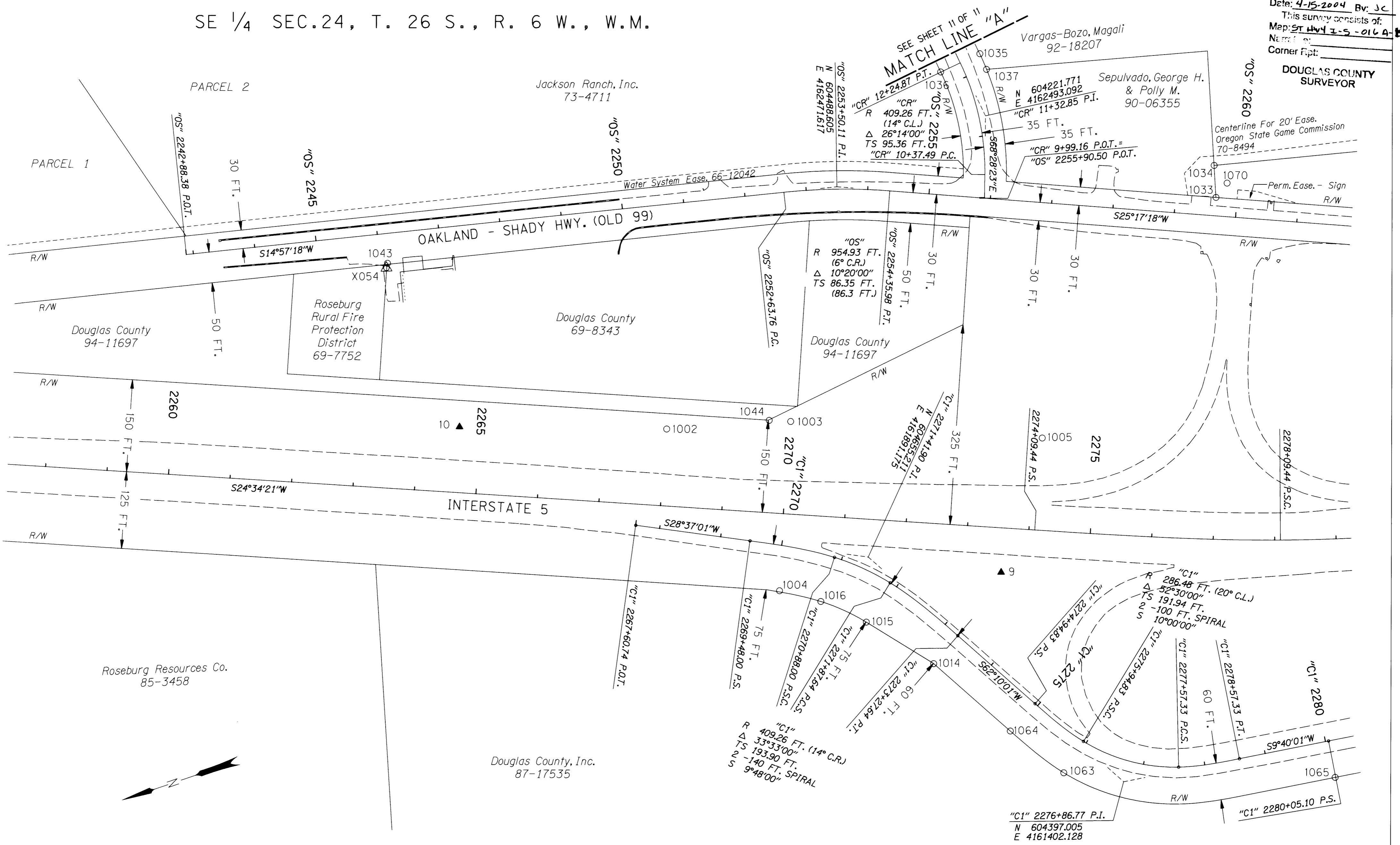


SE 1/4 SEC. 24, T. 26 S., R. 6 W., W.M.

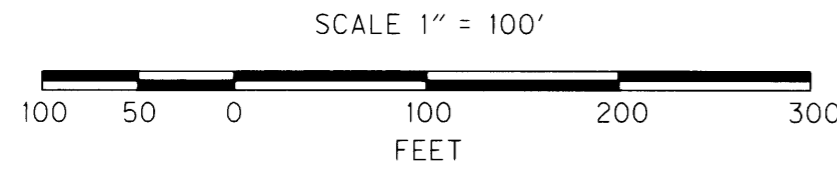
FILED

Date: 4-15-2004 By: JC
 This survey consists of:
 Map: ST HWY 15-016A-K
 Name of:
 Corner Pkt:

DOUGLAS COUNTY SURVEYOR



LEGEND	
()	RECORD DATA
▲	SET NETWORK POINT
○	FOUND MONUMENT
△	FOUND MONUMENT USED AS NETWORK POINT



REGISTERED PROFESSIONAL LAND SURVEYOR
Christine V. Blevins
 JULY 19, 1994
CHRISTINE V. BLEVINS
 2009
 EXPIRES: DEC. 31, 2005

OREGON DEPARTMENT OF TRANSPORTATION
 HORIZONTAL CONTROL, RECOVERY AND RETRACEMENT MAP
 I-5: EXIT 129 / N. UMPQUA RIVER (WINCHESTER) BRIDGES
 INTERSTATE 5 AND OAKLAND-SHADY HIGHWAY
 DOUGLAS COUNTY
 MARCH 24, 2004 FOR ODOT REGION 3
 3500 NW STEWART PARKWAY ROSEBURG, OR 97470
 SHEET 7 OF 11

ST. HWY. 15-016G