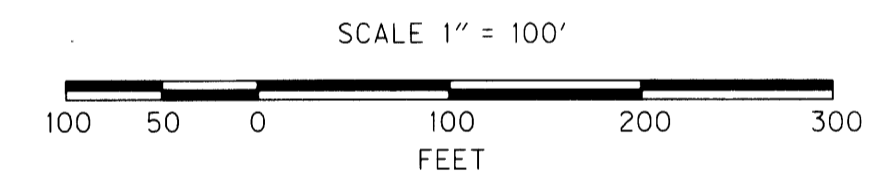
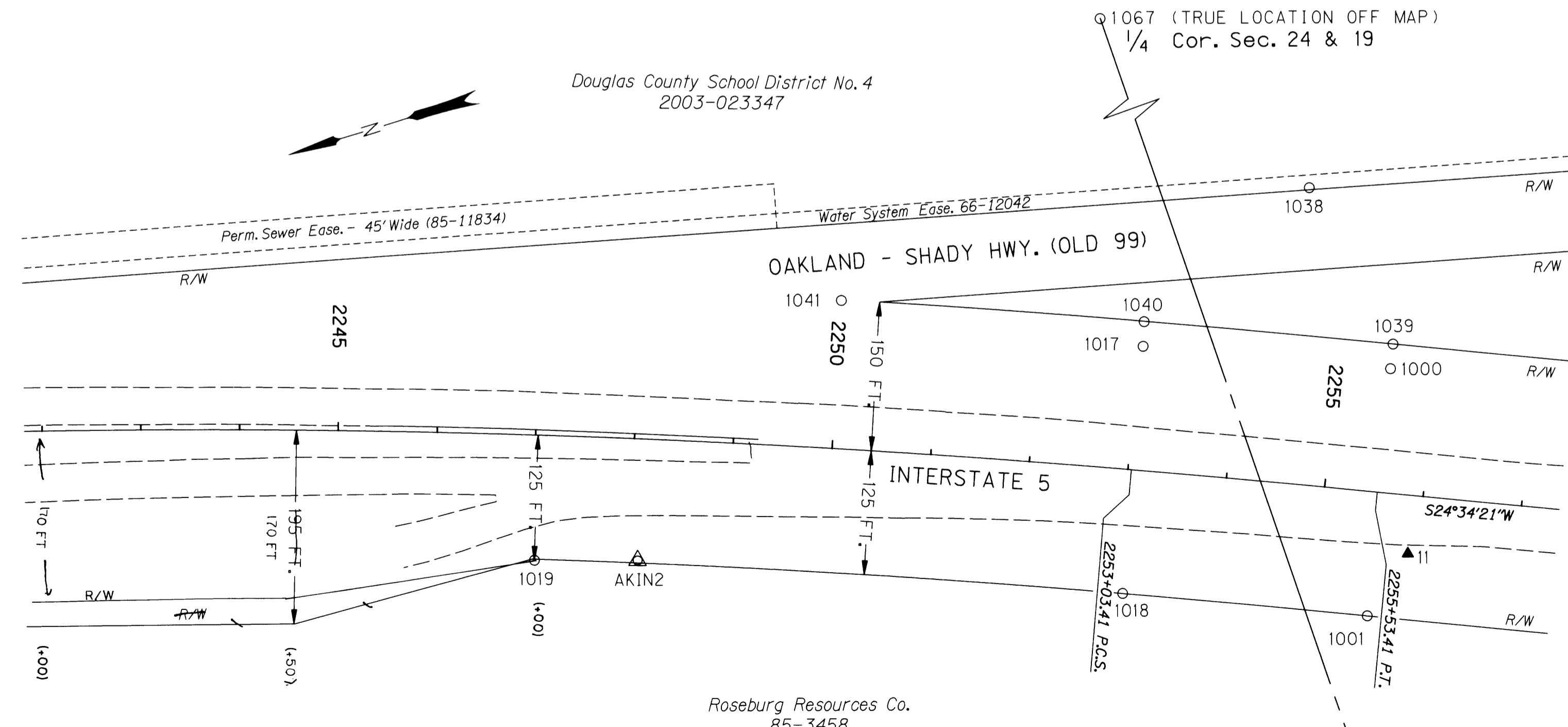
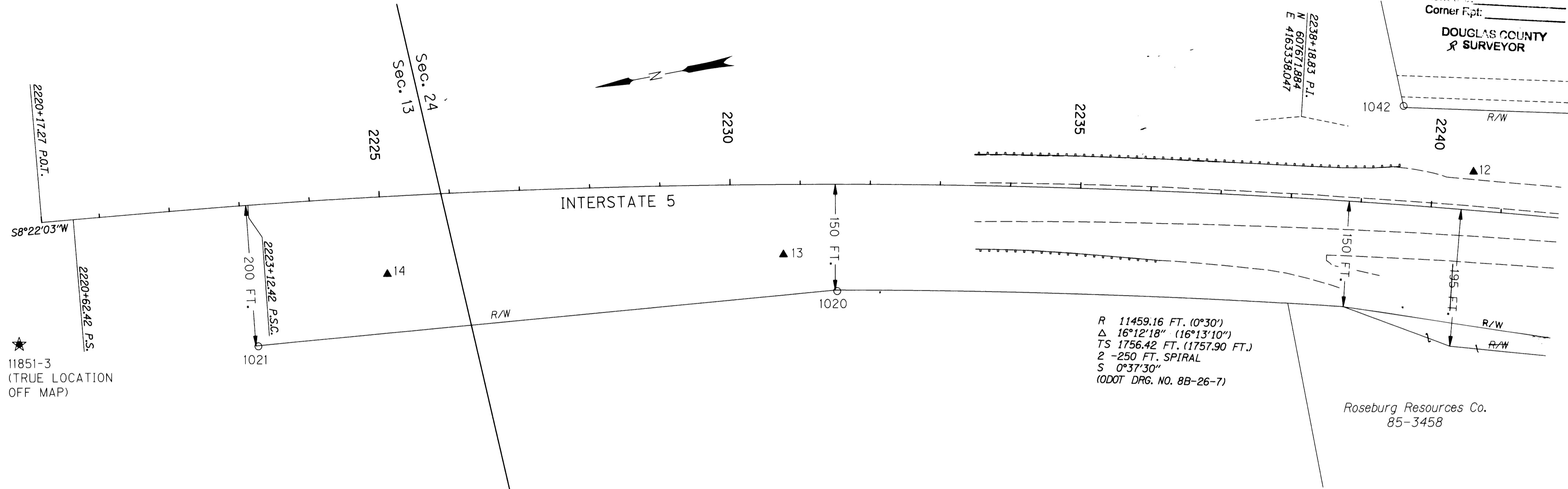


**COUNTY SURVEYORS FILE DATA**  
**DO NOT REMOVE FROM OFFICE**

SE 1/4 SEC. 13 AND NE 1/4 & SE 1/4 SEC. 24, T. 26 S., R. 6 W., W.M.

**FILED**  
 Date: 4-15-2004 By: J.C.  
 This survey consists of:  
 Map: **ST HWY I-5-016 A-X**  
 Name: \_\_\_\_\_  
 Corner Rpt: \_\_\_\_\_  
**DOUGLAS COUNTY**  
**SURVEYOR**



LEGEND	
( )	RECORD DATA
▲	SET NETWORK POINT
★	FOUND GPS STATION
○	FOUND MONUMENT
△	FOUND MONUMENT USED AS NETWORK POINT

**REGISTERED  
 PROFESSIONAL  
 LAND SURVEYOR**  
*Christine V. Blevins*  
 OREGON  
 JULY 19, 1994  
**CHRISTINE V. BLEVINS**  
 2660  
 EXPIRES: DEC. 31, 2005

**OREGON DEPARTMENT OF TRANSPORTATION**  
 HORIZONTAL CONTROL, RECOVERY AND RETRACEMENT MAP  
 I-5: EXIT 129 / N. UMPQUA RIVER (WINCHESTER) BRIDGES  
 INTERSTATE 5 AND OAKLAND-SHADY HIGHWAY  
 DOUGLAS COUNTY  
 FOR ODOT REGION 3  
 3500 NW STEWART PARKWAY ROSEBURG, OR 97470  
 REVISED JUNE 2, 2010  
 MARCH 24, 2004

AFFIDAVIT OF CORRECTION RECORDED  
 6/4/2010 AS CO. CLERK INSTR. No.  
 2010-009175; C.S. FILE 65/71-2